

UNDER CONTRACT! SAINT 2012 ISA 500-2 F — ISA YACHTS



Судостроитель: ISA YACHTS

Год постройки: 2011

Модель: Моторная яхта

Цена: **ЦЕНА ЯХТЫ ПО ЗАПРОСУ**

Местонахождение: Monaco

Длина общая: 164' 0" (49.99m)

Ширина: 29' 9" (9.07m)

Крейс. скорость: 14 Kts. (16 MPH)

Макс. скорость: 16 Kts. (18 MPH)

Купить **UNDER CONTRACT! SAINT 2012 ISA 500-2 POP @ MONACO — ISA YACHTS** а также выбрать подходящую вам яхту из нашего каталога яхт вам поможет опытный яхтенный брокер Андрей Шестаков. На сегодняшний день компания **Shestakov Yacht Sales Inc.** имеет большое количество яхт в собственном списке продаж, а также тесно сотрудничает со всеми крупными яхтенными производителями по всему миру.

Для того чтобы купить яхту **UNDER CONTRACT! SAINT 2012 ISA 500-2 POP @ MONACO — ISA YACHTS** а также проконсультироваться по любому вопросу связанному с покупкой, продажей, чартером яхт позвоните по телефону **+7(918)465-66-44.**

ОГЛАВЛЕНИЕ

ОГЛАВЛЕНИЕ	2
ХАРАКТЕРИСТИКИ	6
Обзор	6
Основная информация	6
Размеры	6
Скорость, вместимость и масса	6
Размещение	7
Корпус и палуба	7
Информация о двигателе	7
ПОДРОБНОЕ ОПИСАНИЕ	8
DESCRIPTION	8
GENERAL INFO	9
ACCOMMODATION	9
MACHINERY /PERFORMANCE	9
Electrical System	10
ELECTRONIC/NAVIGATIONAL EQUIPMENT	10
GALEY	10
EQUIPMENT	10
AUDIO VIDEO	11
SAFETY AND FIRE	11
MY SAINT had a refit last 2017 on following area:	11
Исключения	12
Отказ от ответственности	13
ФОТОГРАФИИ	14
3	14
2	14
4	14
10	14

11	14
13	14
14	15
15	15
16	15
17	15
18	15
19	15
20	16
21	16
22	16
23	16
24	16
25	16
26	17
27	17
28	17
29	17
30	17
31	17
32	18
35	18
36	18
37	18
38	18
39	18
40	19
41	19
42	19

43	19
44	19
45	19
50	20
51	20
52	20
53 (2)	20
53	20
55	20
56	21
58	21
60	21
61	21
62	21
64	21
65	22
66	22
67	22
70	22
71	22
72	22
SUN DECK	23
UPPER DECK	23
MAIN DECK	23
LOWER DECK	23
КОНТАКТЫ	24
Контактная информация	24
Телефоны	24
Время работы	24

Адрес

24

ХАРАКТЕРИСТИКИ

Обзор

ISA 500-2 POP @ MONACO

Основная информация

Тип судна: Моторная яхта	Подкатегория: Flybridge
Модельный год: 2012	Год постройки: 2011
Год обновления: 2017	Страна: Monaco
Верх: Hardtop	Открытая палуба мостика: Да
Кубрик: Да	

Размеры

Длина общая: 164' 0" (49.99m)	Ширина: 29' 9" (9.07m)
--------------------------------------	-------------------------------

Скорость, вместимость и масса

Крейс. скорость: 14 Kts. (16 MPH)	Макс. скорость: 16 Kts. (18 MPH)
Чистый вес: 498 Pounds	Вместимость воды: 5547.613092 Gallons
Объем топливного бака: 21926.280316 Gallons	

Размещение

Всего кают: 6

Всего коек: 8

Спальные места: 12

Всего ком. состава: 8

Каюта капитана: Да

Каюты экипажа: 5

Койки экипажа: 9

Спальных мест экипажа: 9

Комм. состав экипажа: 5

Корпус и палуба

Материал корпуса: Steel

Дизайнер экстерьера: Andrea Vallicelli

Дизайнер интерьера: Francesco
Paszkowski

Информация о двигателе

Двигатели: 2

Производитель: Caterpillar

Модель: 3512C V-12

Тип двигателя: Inboard

Тип топлива: Diesel

ПОДРОБНОЕ ОПИСАНИЕ

DESCRIPTION

Saint features a displacement steel hull and aluminium superstructure, with teak decks. She was built to RINA (Registro Italiano Navale) HULL MACH, ych, AUT-UMS classification society rules, and is MCA LY2 Compliant.

SAINT is a three decker with steel hull and aluminium superstructure characterized by Vallicelli's profile which blends dynamism and elegance. In this case too the ever famous characteristic stern stairway hasn't gone amiss since it is both functionally elegant and stylish.

SAINT features an impressive double staircase running from the lower deck to the sun deck. Thanks to the presence of this stairway, the whole stern area is further embellished in an original way but also due to the "beach area" which is accessible from the stern platform through two large semicircular cut glass doors.

MY SAINT is cool on the outside yet warm on the inside.

The 'homely' touch has been fashioned using select designer furniture, fabrics, and finishes of Travertine and Jerusalem stone, grooved oak and flamed Brazilian rosewood.

Result is harmonious, elegant and sober and the decor has been limited to the alternating of just two essences in function of the spaces available with special care in setting up a lighting system which can convey the same brightness and serene atmosphere typical of a house.

Four guest cabins are situated amidships, two of which are doubles and two are with twin beds, a fifth double guest cabin is situated slightly forward of Centre.

Speaking of the bridge, the yacht's navigational center is faced by large reverse-leaning glass for dominating views to the horizons afar and offering great near-yacht visualization for captain and his team. The main set-up is across five large monitors able to display navigation specific information. Or simple general awareness information like viewing the security cameras strategically placed around the yacht, inside and external.

The top deck houses the modern bridge with the helm/controls station situated in a predominating position from which there's direct access to a technical room and to the captain's cabin with dedicated bathroom.

More open air zones are to be found along the superstructure's bow portion on the same level of the first upper deck where forward of the bridge and helm/controls station there's a welcoming small lounge equipped with a divan and armchairs from which to enjoy the shelter offered from the wind and from the sun by deploying a quick to install awning which has been foreseen in the project.

Comprises six staterooms and five crew cabins. The main-deck master suite includes a private

salon, an office, a dressing room, a bedroom, and a generous his and her bathroom featuring Jerusalem stone in the shower and the bath. The other staterooms reside on the lower deck and include two double and three twin en suite cabins. The decor is consistent with the rest of the yacht, and a rosewood staircase joins the decks.

GENERAL INFO

BUILDER : ISA Yachts MODEL: ISA 500/02 POP YEAR: 2012 REFIT: 2017 DESIGNER : ADREA VALLICELLI L.O.A.= 49.8 M BEAM : 9 M DRAFT : 3.4 M DISPLACEMENT : 498 GTCALSSIFICATION : RINA/MCA LY2. FLAG: CAYMAN ISLANDS. HULL MAT. STEEL HULL + SUPERSTRUCTURE ALUMINUM

ACCOMMODATION

The Superyacht ISA Classic 50 Saint luxury interior sleeps up to 12 guests in 6 staterooms. She is also capable of carrying up to 9 crew onboard to ensure a relaxed luxury yacht experience. Timeless styling, beautiful furnishings and sumptuous seating feature throughout to create an elegant and comfortable atmosphere.

ISA Classic 50 Saint impressive leisure and entertainment facilities make her the ideal yacht for socialising and entertaining with family and friends.

CABINS: SIX + CREW DOUBLE : 3 TWIN : 3 BATHROOMS: NINE + CREW DAY TOILETS : TWO CREW CABINS : FIVE CREW BERTHS : NINE CREW MESS: ONE

MACHINERY / PERFORMANCE

ENGINES: CATERPILLAR 3512 POWER : 2199 HP ENGINE HOURS : PORT 4,859 HR. STBD 4855 HR. CRUISING SPEED: 12 Kt. MAX SPEED : 16. Kt. CONSUMPTION 105 LITER PER ENGINE @ 1270 RPM = 12 KT. RANGE : 4400 NM @ 11 KT. ENGINE TYPE & NR. TWO DIESEL.

GENERATORS: 2 X CATERPILLAR CAT C 6.6 GENSET HOURS: PORT: 7895 HR. STBD : 7876 HR. KILOWATTS : 125 VOLTAGE. 400 , 50 HZ NR OF CYLINDERS : 6 RPM : 1500

EXHAUST MUFFLER : AQUALIFT FUEL PUMP: ELECTRICAL.

BOW THRUSTER MAKER : NAIAD 90 KW FOUR BLADE ELECTRIC IN 24" TUBE. STERN THRUSTER: NO

TANK FUEL : ELEVEN = 85,000 LITERS WATER TANK: THREE = 21,000 LITERS

PROPELLER : FIVE BLADE MIBRAL-CU· 5P D= 1750MM P=1450MM DS-SN (HELICHE RADICE SPA) GEAR BOX: ZF 4661 4.062:1

STABILIZERS: NAIAD 575 ZERO SPEED, HYDRAULIC + ELECTRIC MOTORS

STEERING SYSTEM: HYDRAULIC "MARSILI" + EMERGENCY TILLER WHEEL IN GARAGE.

Electrical System

GENERATOR: CATERPILLAR C6.6 125 KW. 400 V 50HZ
BATTERIES: 34 X 12V PORT ON SUNDECK (UPS & GMDSS)

2. X 12V FOR EMERGENCY FIRE PUMP (TECH SPACE) 10 X. 12V FOR ENGINE & GENERATOR START + ELECT. 4. X 12V FOR SERVICES PORT AFT DECK LOCKER) 2 X 12 V IN PORT BOSUN LOCKER

BATTERY CHARGERS: 12V 35 AMP. MASTERVOLT IN STBD TECH SPACE 24V 3 X 50 AMP MASTERVOLT IN ENGINE ROOM 24V 2 X 100 AMP MASTERVOLT IN PRT DECK LOCKER 24V 25 AMP MASTER VOLTS IN PORT BOSUN LOCKER

TRANSFORMERS : TWO A/SEA CONVERTERS LIQUID COOLED AC63LC-3 VOLTAGE: 400 V /50HZ

ELECTRONIC/NAVIGATIONAL EQUIPMENT

RADAR: 2 X FURUNO; (X BAND + S-BAND 96NM) VHF: FURUNO + CREW MESS AREA VHF: SAILOR VHF DSC 6222 GPS: TWO SIMRAD MX-50 (FIVE HATTELAND DISPLAYS 2 CHART PLOTTERS) SOFTWARE: TRANSAS + MAXSEA COMPUTER : TWO TRANSAS + FURUNO NAVTEX NX-700 + FURUNO SAT CAUTOPILOT: NAVIS AP 3000 COMPASS: SPERRY+ ANSCHUZ + FURUNO DEPTH FINDER : IN ABOVE + 4X B&G H3000 + SKIPPER GDS-101 SONAR : FAR SOUNDER 440 METER. SSB RADIO: SAILOR MF/HF CU5100 SAT COM: V SAT + FLEET BROADBAND FB 500. SAT TV : SEA TEL WITH SKY HD RECEIVERS SAT PHONE THRANE → THRANE + PANASONIC HYBRID AIS : FURUNO FA-150 SHIP MONITORS : 5 X ONYX LCD FOR SHIP MONITORING SYSTEM. CCTV: FIVE CCTV CAMERAS AVAILABLE IN MULTIPLE DISPLAYS

GALEY

REFRIGERATOR: TWO CUSTOM STAINLESS STEEL BUILT IN FREEZER: TWO DOOR CUSTOM STAINLESS STEEL BUILT IN ICE MAKER: BREMA. STOVE : MIELE FOUR OVEN : TWO MIELE + MIELE WARMING DRAWER DEEP FRIER : MIELE DISH WASHER : MIELE COMPACTOR : BROAN BBQ . MIELE GRILL

EQUIPMENT

TENDER : 21 FT CASTOLDI DIESELJET (CASTT1590E111 IN GARAGE)TENDER 2: 15 FT CASTOLDI DIESEL JET (CAST2173E111 FOREDECK)ANCHOR WINDLASS: 2 X MAXWELL VWC11000 VERTICAL, ELECTRIC.DECK CAPSTAN : 2 X MAXWELL VC600 ON AFT DECKGANWAY : POWERED TO STARBOARD SIDE WATER LINE , STAINLESS STEEL PORTABLE ALUMINUMMOTOMAR W/TEAK OVERCRANE: 2 X MOTOMAR(ONE OVERHEAD GARAGE AND ONE MORE IN FOREDECK)BIMINI: HARD TOP ON SUNDECK

AUDIO VIDEO

CRESTON REMOTE SYSTEM WITH IPAD103" PANASONIC TV ON UPPER SALOON2 SAMSUNG TVS WITH PANASONIC BLUE RAY IN MASTER CABINSAMSUNG TVS IN MAIN SALOON LOWER GUEST CABINE, CAPTAIN CABIN, GYM AND CREW MESS AREASEA TEL WITH MOVISTAR SPAIN RECEIVERSB&W AMPLIFIER IN MASTER CABINSIX JEFF ROULAND AMPLIFIERS IN UPPER SALOON + MERIDAN AVPROCESSORMARIDIAN AMPS AND SOROUND PROCESSORS

SAFETY AND FIRE

HAND EXT: 48 X 6 KG & 4 X 1KG DRY POWDER + 14 X 9LT FOAM & 8X 5 KG+2X 20 KG .HI-FOG THRUOUT INERIOR + "CATEF" NOVEC 1230 IN ENGINE ROOM+ C02FOR GALEY.AUX FIRE PUMP: 3X 230 V W/MANIFOLD FOR BILGE PUMP + EMERGENCYDIESELEL. BILGE PUMPS 3X 230/400V W/MANIFOLDS & VALVES FOR FIRE USEEL. BILGE PUMPS: SUNMERSIBLE TYPEENGINE DRIVEN PUMPS : SUCTION ON MAIN ENGINE SEAWATER PICK UPS

BILGE ALARM : YESLIFE JAKETS EIGHTEENINMERSION SUITS :TWENTY TWO.LIFE RINGS : FOUR RINGS 2 W/THROW LINES + 2 W SMOKE CANISTERSLIFE RAFT : 1 X 6 MAN ZODIAC + FOUR 16 MAN ZODIAC W/HYDRORELEASE.EPIRB : 2FIRE DETECTORS, SMOKE DETECTORS , FUME DETECTORS.CONSELLIUM FIRE CONTROL DISPLAY IN CREW MESS & PILOT HOUSE.

MY SAINT had a refit last 2017 on following area:

INTERIOR

All furniture fabrics and carpet on interiors areas were replaced.

Corian material Table in Kitchen area was replaced by a new model . Stoved was upgraded .

crew mess table was replaced by a corian material table. And sofa was renwed

New France framed paintings of Sailboats was installed on guest cabin walls ; also sculptures of Famous Mexican sculptor Jorge Marin was installed in Main saloon.

Crew beds was renewed

EXTERIOR

All furnitures fabrics and cushions on exterior areas was replaced .

Aft cockpit was redesigned like a lounge area. Big sofa was modified and enlarged. New style of chairs and tables were added.

Dinner tables on upper and Sun deck was enlarged; new chairs was added; all wood on furnitures on decks was replaced by solid teak wood.

Barbecue grill support table on sun deck was modified; a new big teak wood bar table and chairs was added , also 2 teak wood beer refrigerators was also installed.

2 new stainless steel unbrellas was installed near of Jacuzzi on sun deck:

2 Shade Canvas on sun deck and forward dinning area was replaced and 2 more shade canvas and were added on upper deck and cock pit.

A new gym with accessories was designed on Beach area in aft deck

EXTERNAL AWLGRIP PAINT.

MY SAINT has not received a general painting service on shipyard; but looks good because partial painting services were applied on deck areas during each maintenance winter season

SURVEY CERTIFICATION.

MY SAINT Just finished Class and Flag Surveys last February month; and all certificates are ready on board; Next Survey must be requested next year 2022 early:

MACHINERY MAINTENANCE.

MY SAINT received continuos maintenance from external authorized services on Principal and auxiliary Machinery in winter season; Please check my next email; it will include a lot of invoices payed by owner to specialized suppliers of maintenances services.

Исключения

При продаже яхты исключаются личные вещи владельца.

Отказ от ответственности

Компания предоставляет описание судна или яхты добросовестно, но не может гарантировать точность этой информации, а также не ручается за техническое состояние. Покупатель должен проинструктировать своих агентов или оценщиков исследовать представленную информацию более подробно, по собственному желанию. Продажа судна или яхты, изменение цены или снятие с продажи будет происходить без предварительного уведомления.

ФОТОГРАФИИ

2



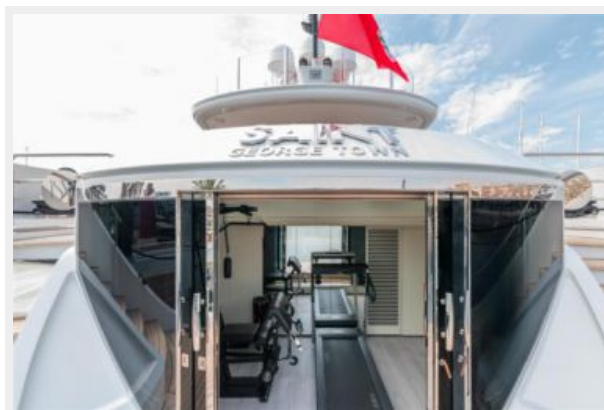
3



4



10



11



13



14



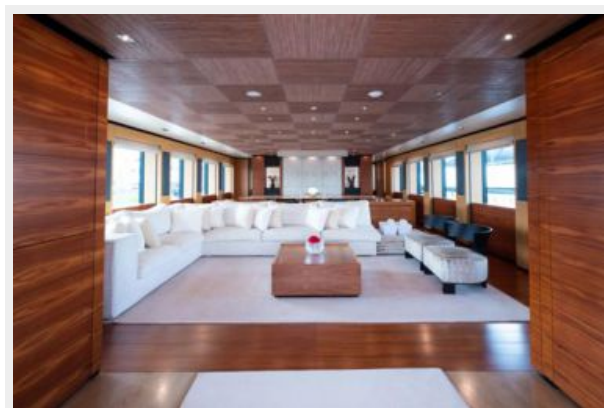
15



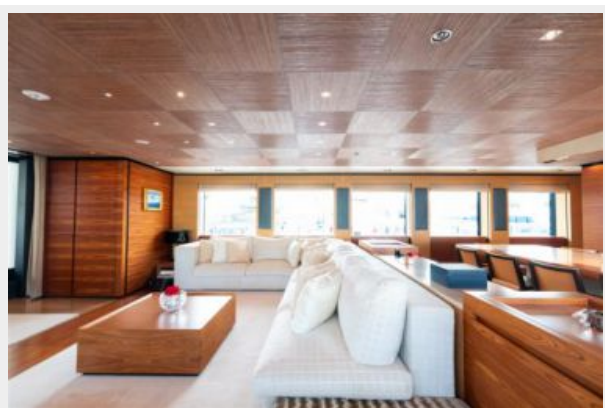
16



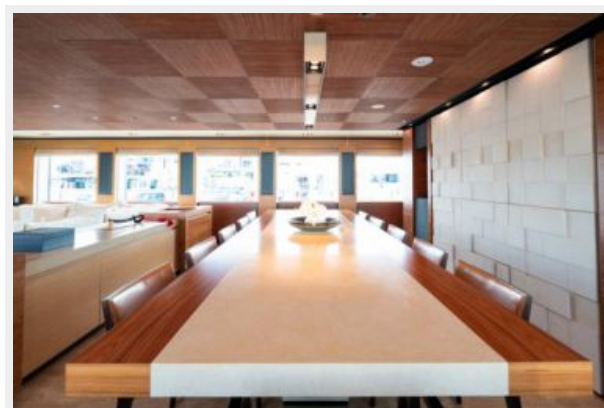
17



18



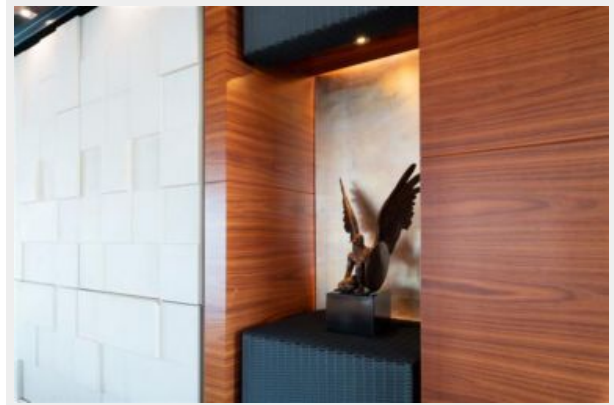
19



20



21



22



23



24



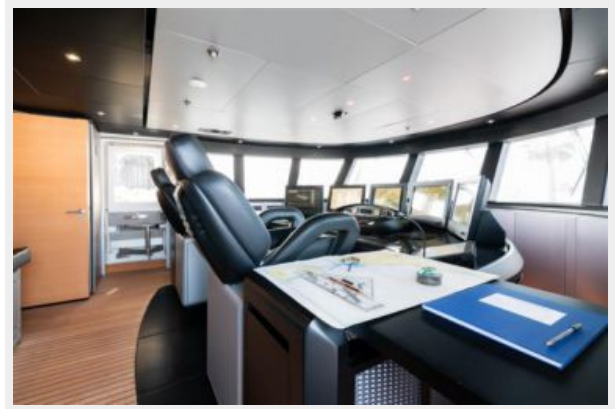
25



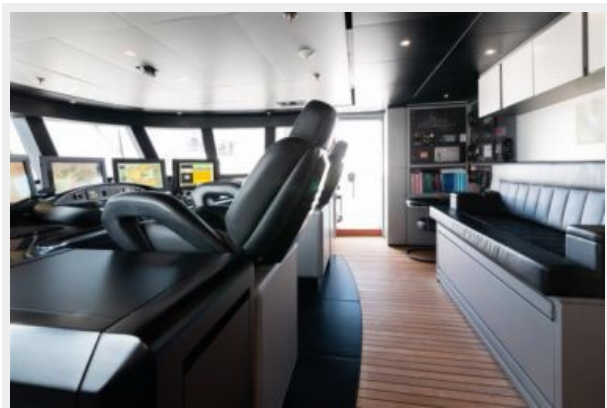
26



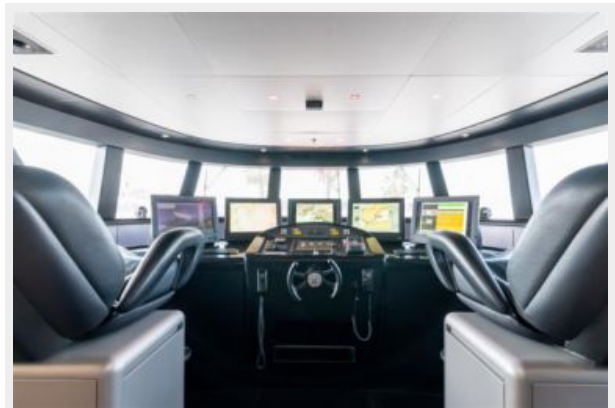
27



28



29



30



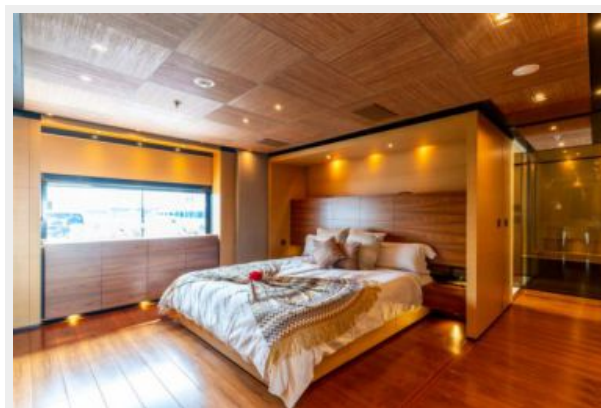
31



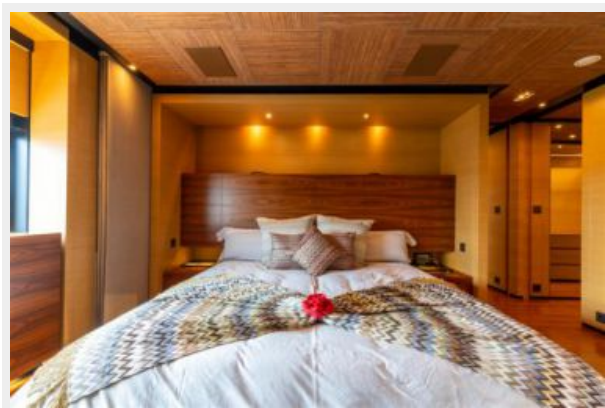
32



35



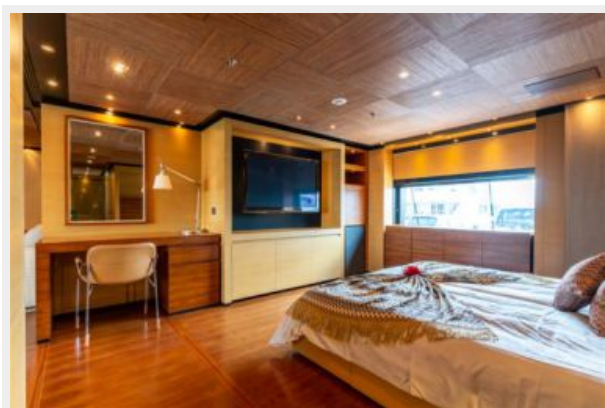
36



37



38



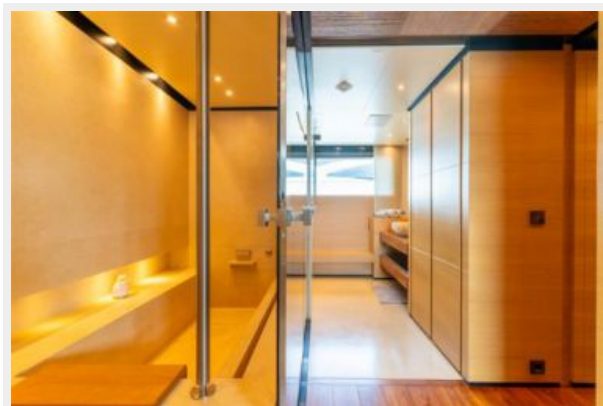
39



40



41



42



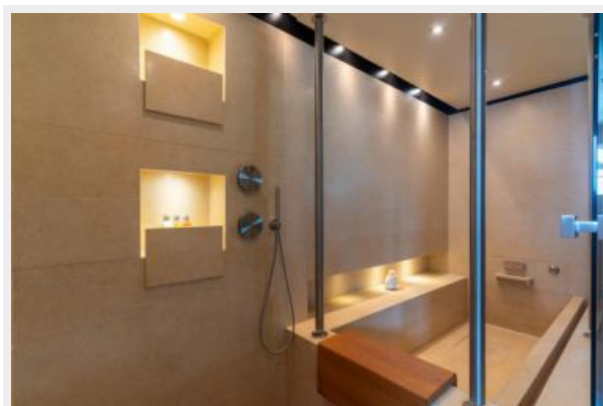
43



44



45



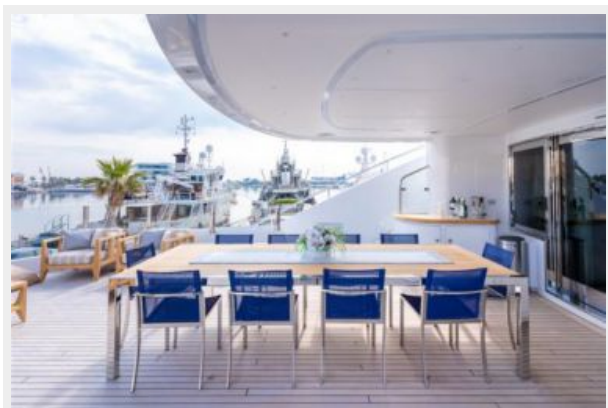
50



51



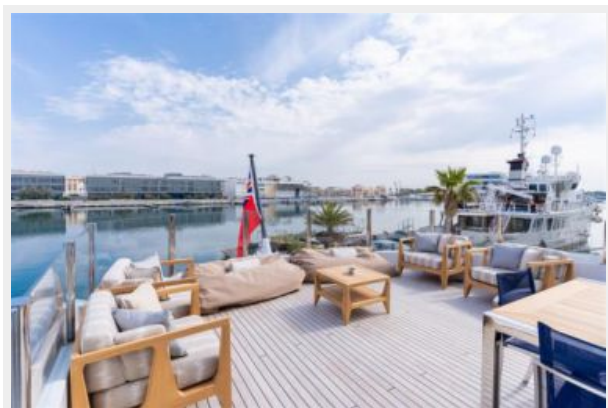
52



53 (2)



53



55



56



58



60



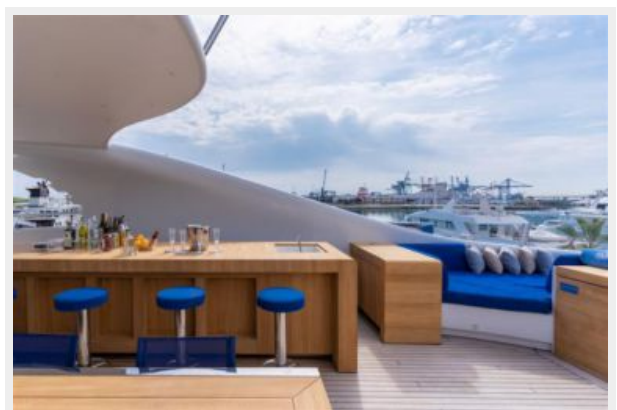
61



62



64



65



66



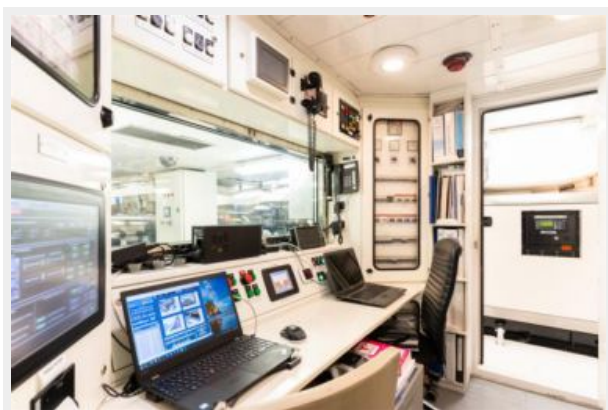
67



70



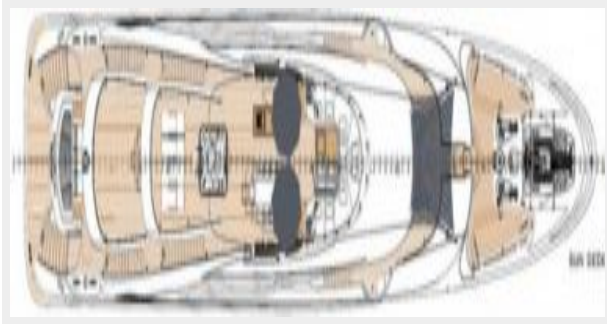
71



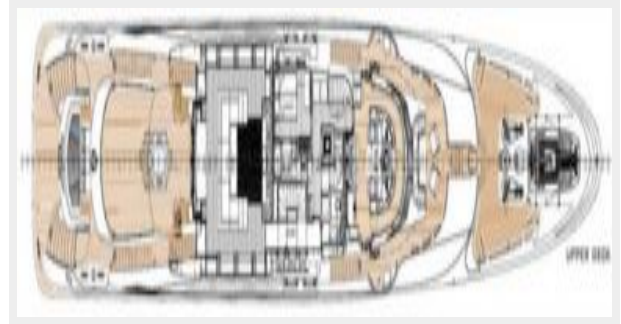
72



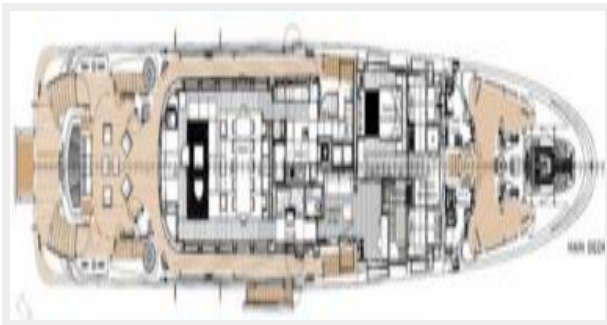
SUN DECK



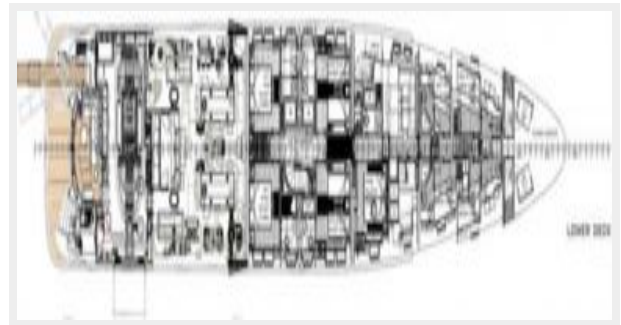
UPPER DECK



MAIN DECK



LOWER DECK



КОНТАКТЫ

Андрей Шестаков (Andrey Shestakov) – ведущий яхтенный брокер отдела продаж яхт и судов компании Shestakov Yacht Sales Inc. Официальный представитель Shestakov Yacht Sales Inc. для русскоговорящих клиентов в центральном офисе компании в Майами/Форт Лодердейл/Флорида/США.

Контактная информация

Email: andrey@shestakovyachtsales.com

Web: shestakovyachtsales.com

Телефоны

Краснодарский край: **+7(918)465-66-44**

США, Майами, Флорида: **+1(954)274-4435**

Время работы

Понедельник – Суббота: **9:00 - 21:00**
EDT

Воскресенье: **Закрито**

Адрес



Harbour Towne Marina, 850 NE 3rd St,
STE 213, Dania, FL 33004