

## ALL'S WELL — HORIZON



**Судостроитель:** HORIZON

**Год постройки:** 2002

**Модель:** Моторная яхта

**Цена:** **ЦЕНА ЯХТЫ ПО ЗАПРОСУ**

**Местонахождение:** United States

**Длина общая:** 65' 0" (19.81m)

**Ширина:** 17' 9" (5.41m)

**Макс. осадка:** 5' 10" (1.78m)

**Крейс. скорость:** 19 Kts. (22 MPH)

**Макс. скорость:** 26 Kts. (30 MPH)

Купить All's Well — HORIZON а также выбрать подходящую вам яхту из нашего каталога яхт вам поможет опытный яхтенный брокер Андрей Шестаков. На сегодняшний день компания Shestakov Yacht Sales Inc. имеет большое количество яхт в собственном списке продаж, а также тесно сотрудничает со всеми крупными яхтенными производителями по всему миру.

Для того чтобы купить яхту All's Well — HORIZON а также проконсультироваться по любому вопросу связанному с покупкой, продажей, чартером яхт позвоните по телефону **+7(918)465-66-44**.

# ОГЛАВЛЕНИЕ

ОГЛАВЛЕНИЕ	2
ХАРАКТЕРИСТИКИ	5
Обзор	5
Основная информация	5
Размеры	5
Скорость, вместимость и масса	5
Размещение	5
Корпус и палуба	6
Информация о двигателе	6
ПОДРОБНОЕ ОПИСАНИЕ	7
Main Description	7
Key Features	7
Vessel Walkthrough	8
Enclosed Skylounge and Helm Electronics	12
Upper and Lower Aft Deck	12
Main Deck Aft	13
Deck	13
Tender	13
Electrical	14
Engine Details and Mechanical Equipment	14
Broker's Comments	15
Exclusions	15
Mechanical Disclaimer	15
Disclaimer	16
Исключения	16
Отказ от ответственности	16
ФОТОГРАФИИ	17
Bow Running View	17

Helm Electronics	17
Helm Looking Aft with Desk, TV, Computer and Dining-Cruising-Relaxation-Lounge Area	17
Galley Country Dinette with Lots of Extra Storage	17
Skylounge-Helm with Dual Stidd Electric Helm Seats	17
Salon View Looking Forward	17
Salon Large Leather Settee	18
Galley	18
Galley with Full Appliances, TV and Custom Ventilation for Cooking and Fridge Heat Removal	18
Galley	18
Master Head En-Suite	18
Master Stateroom	18
VIP En-Suite Head	19
VIP Queen Forward	19
Guest Stateroom Full Head with Same Fit and Finish as Rest of Yacht	19
Guest Stateroom-Optional Crew Quarters Aft	19
Foredeck with Bench Seating and Dual Custom Large Yacht Style Bosun's Lockers	20
Enclosed Flybridge Port Front Side View	20
Beautiful Portside Walkaround with Almost New Looking Paint (Identical on STBD)	20
Aft Port Full Authority Control Station (Identical Station on Portside)	20
Flybridge Forward View with Wet Bar and Dual Electric Grilles	21
Wireless Remote Control for Easy Docking	21
Flybridge Deck Looking Aft with Custom Aft Seating, Table and Portside Lounge	21
Main Aft Deck with Generous Seating and Beautiful Teak Dining Table	21
Starboard Boarding Gate with Custom Easy Setup Boarding Steps	22
Beach Area with Hydraulic Lift and Matching Custom Catamaran Tender	22
Custom 14' 2014 Livingston Fiberglass Catamaran Tender with T-Top	22
Port Aft Quarter	22
Engine Room View Aft	22
Engine Room	22

---

Port View	23
Port Aft Quarter	23
Port Aft Quarter	23
Starboard View	23
In Slings - Haulout	23
Custom Bulbous Bow	23
<b>КОНТАКТЫ</b>	<b>24</b>
Контактная информация	24
Телефоны	24
Время работы	24
Адрес	24

# ХАРАКТЕРИСТИКИ

## Обзор

Rare opportunity to purchase a well-founded one-of-kind liveaboard/cruiser that is turnkey in every sense!

## Основная информация

Тип судна: Моторная яхта

Подкатегория: Flybridge

Модельный год: 2002

Год постройки: 2002

Страна: United States

Открытая палуба мостика: Да

Кубрик: Да

## Размеры

Длина общая: 65' 0" (19.81m)

Ширина: 17' 9" (5.41m)

Макс. осадка: 5' 10" (1.78m)

## Скорость, вместимость и масса

Крейс. скорость: 19 Kts. (22 MPH)

Макс. скорость: 26 Kts. (30 MPH)

Водоизмещение: 94800 Pounds

Вместимость воды: 350 Gallons

Вместимость сточного бака: 100 Gallons Объем топливного бака: 1445 Gallons

## Размещение

Всего кают: 3

Всего ком. состава: 3

## Корпус и палуба

---

**Материал корпуса:** Fiberglass

## Информация о двигателе

---

**Двигатели:** 2

**Производитель:** Caterpillar

**Модель:** 3412E

**Тип двигателя:** Inboard

**Тип топлива:** Diesel

---

# ПОДРОБНОЕ ОПИСАНИЕ

---

## Main Description

---

Rare opportunity to purchase a well-founded one-of-kind liveaboard/cruiser that is turnkey in every sense!

Words alone fail to capture the sophistication and easy utility of this very special yacht! Rarely in my long career have I encountered a production motoryacht so intelligently improved to the point of easily being better than new! Owned by a professional engineer and successful entrepreneur, this yacht can be effortlessly managed single-hand or by an experienced couple looking to upgrade from a smaller yacht.

The customized upgrades and improvements (way too numerous to mention here) have all been done with one overriding ethic: the enhancement of safety, efficiency, pleasure at sea and ease of use for either one or two persons. **All's Well** is a serious Cruiser's Cruiser and should NOT to be compared to any stock "off the shelf" cruiser from any manufacturer. Of course it doesn't hurt that **All's Well** starts with the great Horizon quality of build. Horizon was the company that was a very early adopter of Bill Seeman's vacuum resin infusion layup process. (SCRIMP-Seemann Composites Resin Infusion Molding Process) Hence, her foundation is a solid void-less hull that's just as strong as the day she was laid up! The fit and finish is still in beautiful almost "as-new" condition with NONE of the varnish milking typically found in other production yachts of this vintage. Additionally, the soft goods are all in excellent condition and show the results of a loving and careful stewardship over the past 17 years. The current owner took over the helm as second owner in 2004 with very few hours on the boat and has cruised it every year on repeated trips to the Bahamas and occasionally to New England. Since then, the boat has never sat for more than a few days without a complete flush out of the salt water side of the engine heat exchangers and transmission coolers! **I could go on and on so let me conclude with a few key points:**

- **This is a yachtsman's yacht for the experienced mariner**
- **The right buyer will be probably be a seasoned mariner looking to upgrade to a fully dialed in vessel needing nothing but a new owner**
- **The new owner will be tech savvy and will appreciate the care and thought that went into the numerous upgrades to the vessel**
- **The new owner will understand that for around 900k he/she can own a vessel as great as yachts costing twice or thrice as much!**
- **Lastly, the owner is only offering All's Well for sale due to his building a larger yacht under his own direction.**

**Call Listing Broker to seriously discuss if this could be the right yacht for you!**

---

## Key Features

---

## ONLY 2,160 HOURS!!

- SeaLift Hydraulic Tender Lift/Swim Platform with Wireless Remote Control
- NAIAD Hydraulic Active fin stabilizers
- Entire boat Awlgrippd in 2015-Light grey hull/White House and superstructure
- DOCKINGMASTER multifunction remote control for full authority docking from any position onboard (engine(s) shifting, bow thruster and anchor control)
- Bulbous bow added for added stability and increased hull efficiency and fuel economy
- Hydraulic proportional control ABT bow thruster
- Fresh water flushing system for engines and transmission coolers-engines NEVER sit with salt water in them
- Megayacht style glass helm electronics with totally customizable Dell Displays running Nobeltec
- 20 GPD Watermaker that is actually run-ready!
- Automatic Fresh water tank fill from dockside water supply
- Trace 4 KW inverter with large dedicated AGM battery bank for ultra quiet at anchor
- (2) Glendinning shoreline cord reels for dual 50A/220V Shorepower cables
- **MANY MORE GREAT ITEMS TOO NUMEROUS TO MENTION!!**

## Vessel Walkthrough

---

The skylounge is very spacious and contains a navigation console that would be well at home on a 200 footer. There are two Stidd power slimline helm chairs in soft black leather. Enclosed in a burlled maple panel is an ICOM 506 with wired microphone function, for fog and hailer, one "Dell" marine grade nav computer, two Dell sunlight readable with IR mouse and keyboards, Nobletec "Professional" NAV software with vector and raster charts, Garmin GPS with "WAAS" Garmin DGPS with differential correction, Echoplot forward scanning sonar, Simrad AP28 Autopilot, Simrad compass interface, Furuno FR1525MK3 96 mile color radar, a second Furuno 4 KW Nobeltec digital rader, Raytheon ST60 tridata system, Raytheon ST wind monitor system, Raytheon rudder angle indicator, Raytheon Seataalk converter, a complete Maretron data collection and monitoring system with 200+ connected sensors, Naiad stabilizers, Weems and Plath bilge pump cycle counters (5) and a 6" Richie power damp compass. The Nobletec software also has satellite photo charts, especially good for entering harbors. Glendenning electronic controls. Also, there are two aft deck wing controls, including bow thruster.

The skylounge is paneled in high gloss clear ribbon cut cherry, and the dinette settee is a butter soft black leather. Floors are Teak and Holly, complementing the wood beautifully. On the port side of the skylounge is a Cherry cabinet containing a refrigerator, Yamaha RX-V420 stereo receiver, 32" TV.

Exiting through the aft bridge door is the bridge deck lounge area. On the port side is a sink and double electric grill. Aft of this is a large sundeck with a sun bed to port and a rotating custom Teak table to starboard. There is wiring for a davit installation if desired.



The main salon deck from aft to forward has an alfresco dining area with a large Teak table and Teak deck. Entering the salon through a sliding glass door, to starboard, a refrigerator in a cabinet of Cherry with curved glass storage cabinetry above. Forward of this is a black leather settee and burl maple custom coffee table. All the salon windows have been framed beautifully with custom built half-columns with Carpathian Elm accents. Opposite to port is the entertainment center featuring a Sony 42" LED TV on hi-lo lift, Sony V555ES receiver, Sony DVP C-670D DVD player, RCA DSS receiver, Sony hi fi VCR, Xantec infrared control system and Infinity subwoofer of 250 watts. The stereo system is driving a 5 speaker system of theatre quality.

All of the paneling in the salon and country kitchen area is ribbon cut clear cherry with high gloss finish. The horizontal surfaces are burl maple with cherry surround moldings.

From the salon forward and up one step is the galley and country kitchen. Just off centerline is the full sized Sub-Zero refrigerator with two freezer drawers below with much storage cabinetry. There is also a 4-burner cooktop, micro/convection oven, Bosch dishwasher, and compactor for refuse; in this area forward is a folding flat screen TV with access to the dinette and galley area. The floors and counters in the galley areas are of "black galaxy" granite combining with the cherry wood for a stunning effect. Opposite to port is the interior stairwell to the skylounge. Forward is the dining area which is surrounded by 180 degrees of windows. The dinette table can easily seat four to six persons. The tabletop is burl maple and again the leather is black. The owner has also installed a reverse osmosis water system for the purification of the ships water system and ice. There is also a VHF radio in the galley.

To port of the dining area is the companionway stairwell for access to the master stateroom and VIP.

The VIP stateroom is reached by the companionway forward. The paneling is high gloss ribbon cut cherry, with burl maple countertops and contrasting cherry moldings. The designer fabrics and custom owners touches make this a very luxurious guest accommodation with more than ample storage.

The en-suite head and shower has smoked glass ceilings, "crema marfil" granite countertops and floors and is again cherry paneled. There is a custom shower enclosure.

Aft of the VIP is the full beam master. This stateroom abounds with custom touches and upgrades, from the beautiful ceiling treatments, lighting, bedside columns and built in settee. The paneling is high gloss ribbon cut cherry, with maple burl horizontal counters and contrasting cherry moldings. The area rugs are a perfect contrasting shade and designer fabrics and silks have been incorporated for a luxury feeling. Floors are Teak and Holly. The en-suite head has a large custom shower, "crema marfil" granite counters and floors, smoked glass ceilings and cherry paneling throughout. The stateroom and head both have more than ample storage for extended cruising. Headhunter fixtures are installed throughout the vessel and the master suite is equipped with a bidet.

The aft guest twin stateroom, workshop area and engine room are accessed by a portside companionway stairwell at the aft end of the main salon. There is a door that separates this area

from the main salon, should there be a need for a crew's quarters. The aft end of the vessel contains a very good sized twin berth stateroom which is beautifully appointed and features an oversized head and stall shower. Aft and to starboard is a large workroom with an overabundance of storage, washer and dryer, and watertight door to the swim platform, which allows easily for a crew's quarters as well as an entrance for engine room maintenance.

The engine room is well laid out and finished allowing for easy maintenance and cleanup. Buell dual air horns with compressor and other engine room details are listed separately.

"**All's Well**" has been laid out and fitted by a truly knowledgeable yachting couple for ease of operation. They have simplified many systems and have incorporated custom touches that make the operation of this vessel a "Breeze". She has been very well thought out and is always ready to go in in near "10" condition.

### **Main Salon:**

- Teak and Holly Floors
- Entertainment Center
- Silhouette Blinds
- Yamaha Receiver
- Large Leather Settee
- Sony 42" LED Television on a concealed Hi-Lo lift
- Refrigerator
- Custom Coffee Table with Two Stools
- Sony DVD Changer
- Custom Curved Glass Door Cabinet for Crystal
- Custom Liquor Cabinet
- Infrared Control System
- (5) Surround Sound Speakers

### **Galley:**

- U-Shaped Leather Dinette with Storage Beneath
- 30" Oven
- Sub-Zero Refrigerator with two Freezer Drawers
- Granite Countertops and Galley Deck
- Custom ventilation system to remove fridge heat from vessel for comfort and to reduce air conditioning load
- Bosch Dishwasher
- Very generous Storage Cabinets
- Stainless Steel Sink with Garbage Disposal
- 12" Flat Screen TV
- GE Cooktop
- Standard Intrepid VHF
- Microwave/Convection Oven with Outside Venting Exhaust

- Trash Compactor
- Under Counter Reverse Osmosis Water Purification System

### **Master Stateroom and Head:**

- King Berth with piston actuated gas assisted lift for accessing generous storage below
- Nu-Tone Central Vacuum System
- En-Suite Head and Shower
- Granite Floors in Head
- Stowing 32" Sony Flat Screen TV on swivel pullout mount for easy viewing
- Marble Counters in Head
- Yamaha TX-V420 Stereo Receiver
- Bidet
- Wi-Fi Antenna
- Large Double Closet with 3 Drawers, 2 Additional Closets
- Secondary A/C system
- Ceiling Mounted Infinity Speakers Left and Right
- Couch, Dressing Table, Built-in Drawers

### **VIP Stateroom and Head:**

- Queen size berth with storage beneath
- Escape Hatch to Forward Deck
- Nightstands on either side of bed
- Teak and Holly Floors
- Granite floors and counters in head
- Central Vacuum System
- Stereo speakers
- (3) Closets/Hanging lockers

### **Guest Stateroom / Optional Crew Quarters:**

- Twin Berths
- Sony AM/FM Radio with CD Player
- Carpeting
- Custom Bedding and Bed Coverings
- Stereo speakers
- Accent Pillows
- Full head with stall shower opposite

### **Guest Area / Crew Area Workroom:**

- GE Stacked Washer and Dryer
- Work Bench with Vice
- Large Storage Locker Areas with Custom Sliding Drawers
- Sink

- Access to steering gear, Glendinning cord reels and other auxiliary equipment

### **Guest / Crew Head:**

- Aft Head is located opposite the Guest Stateroom
- Headhunter Toilet
- Granite Counter and Floor
- Grohe Fixtures
- En-Suite Shower

## **Enclosed Skylounge and Helm Electronics**

---

- Teak and Holly Floors
- Garmin DGPS 53 Pod with Differential Correction
- Silhouette Blinds
- Echo Pilot Forward Scanning Sonar Model FLS-2
- Dinette with Leather Cushions and Accent Pillows
- Simrad AP28 Autopilot
- Air Conditioned and Heated
- Simrad Compass Interface
- (2) Stidd 500nx-PX2 Power Slimline Helm Chairs
- Icom M506 VHF with Hailer Amplifier
- Yamaha RX-V420 receiver
- Furuno FR1525MK3 96 mi Color Radar
- Infinity Stereo Speaker System
- Furuno/Nobeltec 4 KW Second Radar System
- Television 32"
- Raytheon ST60 Tridata System
- Refrigerator
- Raytheon ST60 Wind System
- Dell Computer System with Twin 26" Display Monitors
- Raytheon Rudder Angle Indicator
- Maretron Data Collection and Logging System
- Raytheon Sea Talk to RS232 Converter
- Nobeltec "Time Zero" Navigation Software with Vector, Raster, and Photo Charts
- Weems and Plath Bilge Pump Recorders (5)
- Glendinning Electronic Engine Controls
- Exotic Wood Work Station with PC
- Docking Master - Wireless Engine Control System

## **Upper and Lower Aft Deck**

---

### **Upper Aft Deck:**

- Varnished Teak Dining Table
- Bose Stereo Speaker System
- Day Bed and Bench Seat with Cushions
- Custom BBQ Grill Station with Sink and Storage Lockers
- Spreader Lights
- Teak Decking

### Lower Aft Deck:

- Underwater Lighting
- Teak Deck and Swim Platform
- SeaLift Hydraulic Tender Lift with Remote Control

## Main Deck Aft

---

- Varnished Teak Dining Table and Bench Seat with Cushions
- Storage Lockers
- Maxwell Snubbing Capstans, Port and Starboard (Electric)
- Search Light with Remote Control
- Aft Control Stations (2)
- Bose stereo speaker system
- Custom Mast with Flood Lights

## Deck

---

- Heavy duty high grade SS safety rails and stanchions all around
- Heavy duty Maxwell 3500 Anchor Capstan with 3/8" all chain rode (remotely controllable as well as locally)
- Bench Seat and Sunpad with Cushions
- Full walkaround side decks
- Dual custom-enlarged bosun's lockers port and starboard

## Tender

---

Matching Custom 14' 2014 Livingston Fiberglass catamaran tender with T-Top and 40hp Tohatsu outboard. This tender is awlgripped to match the mother ship and stows neatly on the hydraulic swim platform. She features ample seating for 6 and a solar panel for battery maintaining. She is very stable underway due to her cat hull design. It carries 9 gallons of fuel and includes hydraulic steering and solar charging for starter batteries. In 2014 the cost to construct was \$38,500.

NOTE: Tender is not included in the asking price but is being offered for sale to the new owner

on a negotiable basis.

## Electrical

---

- Charles ISO-boost isolation transformers
- 12v, 24v D/C Electrical System
- 4kw Trace Sine Wave Inverters
- (2) Sentry Battery Chargers
- Shore Power – Glendenning Cablemaster
- (2) 50 amp, 75' Cables
- Electrical Bonding System with Zinc Saver
- 200 Amp Baldor Alternator on Port Engine
- Onan 27.5 Generator with Sound Shield
- Battery Condition Gauge
- (2) AGM 8D Engine Starting Batteries
- Battery Parallel Switch
- (6) AGM 8D Service Batteries
- Vimar Switched A/C-D/C Lighting Throughout Vessel
- 110v, 220v A/C Electrical System
- Cable TV and Telephone Inlets
- Voltage Meters

## Engine Details and Mechanical Equipment

---

- Twin 1400 hp 3412E Caterpillar Diesels (approx. 2,100 Hours)
- A/C Fluorescent and D/C LED Dome Lights Overhead
- Headhunter Royal Flush Toilet System
- D/C Engine Room Blowers
- 25HP American Hydraulic Bow Thruster System
- Engine Room Bilge Pumps
- Glendenning Electronic Controls
- Double Sound and Heat Insulation (foam and lead)
- Delta "T" Engine Room De-misters and Fans
- Fresh Water Flush System on both engines and generator
- High Volume A/C Water Pressure System with D/C backup
- Aluminum Diamond Plate Decking
- Aluminum Fuel Tanks with Sight Gauges and Electric Gauges
- Fireboy Manual/Automatic FE-241 fire system
- Fresh Water Hose System
- Engine Alarm System
- Heavy Duty Engine Room Door
- Reversing Oil Change Pump System for engine and generator also piped into

transmissions

- High Water Alarm
- Fuel Manifold System
- Raw Water Sea Strainers
- Engine Day Tank
- Naiad Stabilizers
- Dual Racor Filters Each Engine
- Emergency Tiller Steering
- ABT bow thruster PTO pump on port engine
- Special High output Alternator, 200amp 24 v on Port Engine
- Caterpillar Electronic Engine Synchronizers
- Racor 500 Filter for Generator
- ZF HA269 Transmissions 2.03:1 reduction
- Engine Hour Meters
- Underwater Exhaust System with Mufflers
- Fuel Shut Off Valves
- Charles ISO Boost Transformers (automatic)
- Stainless Overhead Grab Rails (2)
- Water Maker – 20 Gallons per Hour
- Onan 27.5 Generator with Sound Shield

## Broker's Comments

---

Once again, **All's Well** presents a rare value for money in an extremely well maintained and equipped cruising/liveaboard motoryacht. Viewings available by appointment for serious and qualified buyers. Additionally, a 2015 condition survey is available for serious and qualified buyers.

## Exclusions

---

- (6) Offshore life jackets under helm
- Inflatable Life Raft
- Flower arrangements
- Personal galley serving wares
- Clothing and other personal belongings
- Select tools and supplies

## Mechanical Disclaimer

---

Engine and generator hours are as of the date of the original listing and are a representation of what the listing broker is told by the owner and/or actual reading of the engine hour meters. The broker cannot guarantee the true hours. It is the responsibility of the purchaser and/or his agent to

verify engine hours, warranties implied or otherwise and major overhauls as well as all other representations noted on the listing brochure.

## **Disclaimer**

---

The company offers the details of this vessel in good faith but cannot guarantee or warrant the accuracy of this information nor warrant the condition of the vessel. A buyer should instruct his agents, or his surveyors, to investigate such details as the buyer desires validated. This vessel is offered subject to prior sale, price change or withdrawal without notice.

## **Исключения**

---

При продаже яхты исключаются личные вещи владельца.

## **Отказ от ответственности**

---

Компания предоставляет описание судна или яхты добросовестно, но не может гарантировать точность этой информации, а также не ручается за техническое состояние. Покупатель должен проинструктировать своих агентов или оценщиков исследовать представленную информацию более подробно, по собственному желанию. Продажа судна или яхты, изменение цены или снятие с продажи будет происходить без предварительного уведомления.



# ФОТОГРАФИИ

**Bow Running View**



**Helm Electronics**



**Helm Looking Aft with Desk, TV, Computer and Dining-Cruising-Relaxation-Lounge Area**



**Galley Country Dinette with Lots of Extra Storage**



**Skylounge-Helm with Dual Stidd Electric Helm Seats**



**Salon View Looking Forward**



**Salon Large Leather Settee**



**Galley**



**Galley with Full Appliances, TV and Custom Ventilation for Cooking and Fridge Heat Removal**



**Galley**



**Master Stateroom**



**Master Head En-Suite**





**VIP Queen Forward**



**VIP En-Suite Head**



**Guest Stateroom Full Head with Same Fit and Finish as Rest of Yacht**

**Guest Stateroom-Optional Crew Quarters Aft**



**Foredeck with Bench Seating and Dual Custom Large Yacht Style Bosun's Lockers**



**Enclosed Flybridge Port Front Side View**



**Beautiful Portside Walkaround with Almost New Looking Paint (Identical on STBD)**



**Aft Port Full Authority Control Station (Identical Station on Portside)**



### Flybridge Forward View with Wet Bar and Dual Electric Grilles



### Wireless Remote Control for Easy Docking



### Flybridge Deck Looking Aft with Custom Aft Seating, Table and Portside Lounge



### Main Aft Deck with Generous Seating and Beautiful Teak Dining Table





**Starboard Boarding Gate with Custom Easy Beach Area with Hydraulic Lift and Matching Setup Boarding Steps**



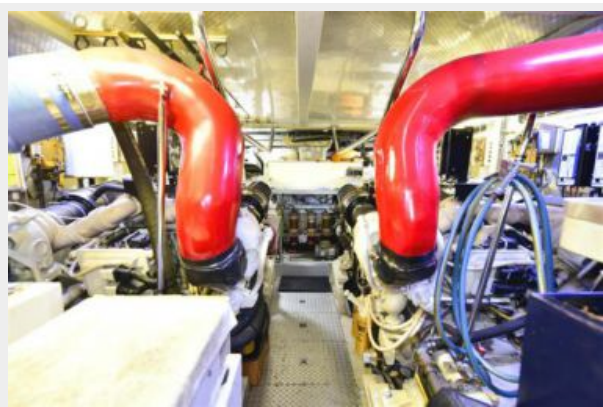
**Port Aft Quarter**



**Custom 14' 2014 Livingston Fiberglass Catamaran Tender with T-Top**



**Engine Room View Aft**



**Engine Room**



**Port View**



**Port Aft Quarter**



**Port Aft Quarter**



**Starboard View**



**In Slings - Haulout**



**Custom Bulbous Bow**



# КОНТАКТЫ

---

Андрей Шестаков (Andrey Shestakov) – ведущий яхтенный брокер отдела продаж яхт и судов компании Shestakov Yacht Sales Inc. Официальный представитель Shestakov Yacht Sales Inc. для русскоговорящих клиентов в центральном офисе компании в Майами/Форт Лодердейл/Флорида/США.

## Контактная информация

---

Email: [andrey@shestakovyachtsales.com](mailto:andrey@shestakovyachtsales.com)

Web: [shestakovyachtsales.com](http://shestakovyachtsales.com)

## Телефоны

---

Краснодарский край: **+7(918)465-66-44**

США, Майами, Флорида: **+1(954)274-4435**

## Время работы

---

Понедельник – Суббота: **9:00 - 21:00**  
EDT

Воскресенье: **Закрито**

## Адрес

---



Harbour Towne Marina, 850 NE 3rd St,  
STE 213, Dania, FL 33004