

UBUNTU — PRIVILEGE



Builder: PRIVILEGE

Year Built: 1989

Model: Cruising Sailboat

Price: PRICE ON APPLICATION

Location: United States

LOA: 39' 0" (11.89m)

Beam: 21' 0" (6.40m)

Max Draft: 4' 3" (1.30m)

Our experienced yacht broker, Andrey Shestakov, will help you choose and buy a yacht that best suits your needs **Ubuntu — PRIVILEGE** from our catalogue. Presently, at Shestakov Yacht Sales Inc., we have a wide variety of yachts available on our sale's list. We also work in close contact with all the big yacht manufacturers from all over the world.

If you would like to buy a yacht **Ubuntu — PRIVILEGE** or would like help answering any questions concerning purchasing, selling or chartering a yacht, please call **+1(954)274-4435**

TABLE OF CONTENTS

TABLE OF CONTENTS	2
SPECIFICATIONS	6
Overview	6
Basic Information	6
Dimensions	7
Speed, Capacities and Weight	7
Accommodations	7
Hull and Deck Information	7
Engine Information	7
DETAILED INFORMATION	8
Accommodations	8
Hull, Deck & Cockpit	8
Engine and Mechanical	10
Galley	10
Electrical	10
Electronics	11
Sails & Rigging	11
2020 Refurb	11
Additional and Safety Equipment	12
Exclusions	13
Disclaimer	13
PHOTOS	14
1	14
2	14
3	14
4	14
5	15
6	15

7	15
8	15
9	15
10	15
11	16
12	16
13	16
14	16
15	16
16	16
17	17
18	17
19	17
20	17
21	18
22	18
24	18
23	18
25	19
26	19
27	19
28	19
29	20
30	20
31	20
32	20
33	21
34	21
35	21

36	21
37	21
38	21
39	22
40	22
41	22
42	22
44	23
43	23
46	23
45	23
47	24
48	24
49	24
50	24
52	25
51	25
54	25
53	25
55	26
56	26
57	26
58	26
60	27
59	27
62	27
61	27
63	28
64	28

65	28
66	28
67	29
68	29
69	29
70	29
71	30
72	30
73	30
74	30
75	31
76	31
77	31
78	31
79	32
80	32
81	32
82	32
83	33
CONTACTS	34
Contact details	34
Telephones	34
Office hours	34
Address	34

SPECIFICATIONS

Overview

“Ubuntu” is a well-equipped, affordable catamaran with a spacious cockpit covered by a brand new bimini, powerful solar with a kilowatt of lithium-ion storage capacity, a reverse-cycle air-conditioner / heater, updated electronics and 30 hp engines in 2018 – and much more.

“Ubuntu” is a South African philosophy that can be described as “spirit of community.” In recent years the owners have used Ubuntu to give families, groups of school children, college students and Scouts access to the ocean and its ecosystems, and a chance to experience sailing and life on board a boat. For insight into how the catamaran Ubuntu has brought the name to life go to sailubuntu dot com. Her current owners have owned her since 2008 and have lived aboard since then. They raised two children on board and cruised extensively. The painted mast and cross beam at the bow are an example of the uniqueness of this boat and the talents of her artist owners.

Privilege catamarans are known for their seaworthiness and sailing ability. Ubuntu was built as a cruising catamaran, so has loads of storage. She is a bit heavier than some catamarans, but her current owners (of 12 years) can attest to her ability to treat them well in all weather conditions. Over the years Ubuntu's systems have been upgraded and adjusted to suit the needs of her owners and their lifestyle.

In 2020 Ubuntu had a major refit of the exterior and mechanical refurbishment. (For full details see '2020 Refurb' under descriptions/full specifications.)

Recent upgrades include:

Standing rigging & running rigging (2015)Mainsail (2015)Beta Marine 30HP engines (2018)Isotherm refrigerators (2015/2018)Dragonfly Lithium Ion batteries (2018)Victron Inverter-Charger (2018)Sunpower Solar Panels - 3 x 320W (2018)Mermaid Aircon (2015)B & G Zeuss 3 Chartplotter (2018)Simrad NAIS - 500 AIS Transceiver (2018)Rocna 25kg anchor w/ 125' chain (re-galvanized 2020)New canvas - including cockpit enclosure (2020)Hull painted (2020)Hull below waterline stripped, epoxy coated and painted w/ Copper Coat (2020)

Don't delay in making an appointment to see this unique offerin

Basic Information

Category: Cruising Sailboat

Model Year: 1989

Year Built: 1989

Country: United States

Dimensions

LOA: 39' 0" (11.89m)

LWL: 39' 4" (11.99m)

Beam: 21' 0" (6.40m)

Max Draft: 4' 3" (1.30m)

Clearance: 55' 0" (16.76m)

Speed, Capacities and Weight

Displacement: 19841 Pounds

Water Capacity: 100 Gallons

Holding Tank: 23 Gallons

Fuel Capacity: 100 Gallons

Accommodations

Total Cabins: 4

Hull and Deck Information

Hull Material: Fiberglass

Engine Information

Engines: 2

Manufacturer: Beta

Model: 37752

Engine Type: Inboard

Fuel Type: Diesel

DETAILED INFORMATION

Accommodations

The salon is accessed through a double door from the cockpit.

Large salon table with curved settee

Large salon windows forward

Nav station to starboard with **pivoting chair** (chair can be used as captain's chair at the helm)

Galley down, in the port hull

4 x Double cabins

Basin w/ hot & cold water in each cabin

Plentiful storage in each cabin.

Manual Raritan PH Superflush Head w/ shower port hull

Electric Raritan Elegance head in starboard hull

Extensive storage along outer starboard hull

Eye-level fridge inner port & starboard hulls

Hull, Deck & Cockpit

HULL:

Fibreglass w/ Divinycel core above waterline

Hull below waterline sanded down to raw fiberglass & barrier coated (2020)Epoxy Copper-Coat applied - 5coats w/ 6 coats at waterline (2020)

Hull sides sanded and painted w/ 'Emerald Rain Refresh' (2020)

TRANSOM & COCKPIT:

Access from sugar scoops Swim ladder port hull

Transom shower (hot and cold), port transom steps

Custom Davits w/ solar panel supports

Solar Panels above davits

High transom

Traveller atop the transom

Custom Aluminum stern ladder for boom access

Seating across the back of the cockpit with lazarettes below

Helm station, port aft

Engine room access through aft hatches in the cockpit floor

2 x Lewmar 46 ST primary winches (forward of helms)

2 x Lewmar 43ST secondary winches

New cockpit flooring teak strips (2018)

Wide seating (lounging) areas on each hull between wheels and coachroof.

Cockpit seating port and starboard

A large teak dining table to starboard w/ folding sides

Double door to interior

Windows from cockpit to interior

Canvas Bimini with 3-sided Enclosure. Strataglass forward & side panels, helm station;
Sunbrella sunshade aft. (11/2020)

Cockpit cushions

Sunbrella wheel covers

FOREDECK:

Large foredeck with 8 hatches opening into interior

Bow (2) hatches access large storage compartment in each hull

Bow (1) hatch accesses large sail locker midship

Hatch Covers (2020)

Phifertex window covers for forward fixed windows & entry doors (2020)

S/S Bow pulpits w/ fixed perch seats

Cleat on each bow with oversized backing & deck plates

Trampolines (2019)

Goiot Electric Windlass

ROCNA 25KG Anchor w/ 125' chain (chain re-galvanized 2020)

Double S/S Bow roller

Custom painted cross beam.

Engine and Mechanical

- Starboard - Beta Marine 30HP w/ 1246 hrs (01/18)
- Port - Beta Marine 30 hp w/ 835 hrs (10/18)
- 2 x 3-blade fixed props (tuned and serviced 2020)
- Beta 70A Alternators
- Full engine service (2020)
- Heat exchangers flushed & new seals (2020)
- Starboard fuel/water separator replaced (2020) (recommend same for port)
- Engine mount stringers repaired, mounts re-seated & engines re-aligned (2020)
- Props inspected and serviced (2020)
- Prop shafts, cutlass bearings, shaft boots & zincs replaced (2020)
- Rudders removed, backing plates replaced (2020)
- Quadrants serviced and tensioned (2020)
- Fuel tanks fitted w/ 4" access hatches

Galley

- Eno 2-burner cooktop (2015)
- Built-in propane oven (original)
- Westinghouse microwave (2015)
- Isotherm front-loading fridge w/ freezer in galley (2018)
- Isotherm front-loading fridge w/ freezer in starboard hull (2015)
- Large S/S sink (2015)
- Storage (lots of it!)

Electrical

- 3 x Sunpower 320W Solar Panels (2018)
- Mermaid Reverse Cycle Aircon 16.5K BTU (2015)

- Victron Multiplus Compact Inverter-charger (2018)
- 10 x Dragonfly DFGC2 LiFePO4 100W Lithium Ion House Batteries (2018)
- 1 x Interstate 24MXHD Start Battery (2018)
- 2 x 30 A Shorepower outlets
- 2 x 30A Shorepower cables
- 1 x 50 A Splitter
- Isotemp SLIM 25 (6.5 Gal) water heater (2018)

Electronics

- **B&G NAC-3 Autopilot w/ Simrad handheld wireless remote**
- & B&G Triton Digital Display
- **B&G Zeus3 - 9" Chartplotter & Multifunction Display (2018)**
- **Simrad DST800 Depthsounder/Log** NMEA 2000 Thru-Hull Traditional Transducer
- **B&G WS320 Wireless Wind Pack** with Interface
- **B&G V50 Fixed-Mount VHF Radio / AIS Receiver** w/Simrad NSPL-500 VHF AIS Splitter
- **Simrad NAIS-500 AIS Class B Transceiver (2018)**
- Pioneer Stereo/CD changer: (in place, not connected)
- Worldwide Basemap Charts and North America Chart Card for Chartplotter

Sails & Rigging

- Fully Battened Mainsail - Mack Sails 10.7 oz Challenge High Aspect Dacron (2015)
- Mack Pack & Lazy Jacks
- 140% Genoa
- ProFurl furler
- Standing Rigging - 11/32" and 15/32" 1x9 stainless steel cable (2015)
- Running Rigging (2015) & washed (2020)
- Mast custom painted by owner (acrylic with 5 coats of clear coat)
- 2 x Lewmar 43ST halyard winches on mast
- 1 x Lewmar 40 reefing winch on mast

2020 Refurb

- **Complete bottom job.** Sanded hull to fiberglass and replaced with new barrier coat
- Applied Epoxy Copper-Coat (5 coats - 6 at waterline).
- **Hull sides**, above waterline to deck. Used 'Emerald Rain Refresh'

- **New Bimini** with isinglass sides and helm station protection and sun shade on stern
- New hatch covers
- **Replaced prop shafts**
 - *replaced both Cutlass bearings.
 - * props inspected and serviced.
 - * replaced shaft and prop zincs.
 - * replaced shaft boots.
- **Removed rudders**
 - * replaced both backing plates and serviced quadrants.
 - * replaced both locking pins for the rudder control arm
 - * cleaned and tensioned steering cable for helm
- **Fuel tanks** - added 4" access hatches
- **Fixed motor mount seating** in both engine rooms* repaired stringers for engine mounts* re-seated and re-aligned engines
- **Serviced engines:*** fuel filters* gaskets for heat exchangers* clean heat exchanger cores* replaced s/b fuel/water separator with larger unit (recommend same on port side)* oil service (June 2020)* service transmissions with new Dexron III fluid
- **Anchor chain (125') re-galvanized** and marked
- **Running rigging - washed**

Additional and Safety Equipment

- 2011 West Marine 11'5" Hypalon dinghy (has very slow leak)
- 2009 15 HP Yamaha 4-stroke outboard
- Lifesling
- 2 Jacklines
- Fire extinguishers
- Smoke detectors
- Givens Liferaft (needs inspection)
- 4 x Type 1 Lifejackets w/ strobe lights
- Spares / tools / transfer pumps

Exclusions

Owner's personal belongings.

Disclaimer

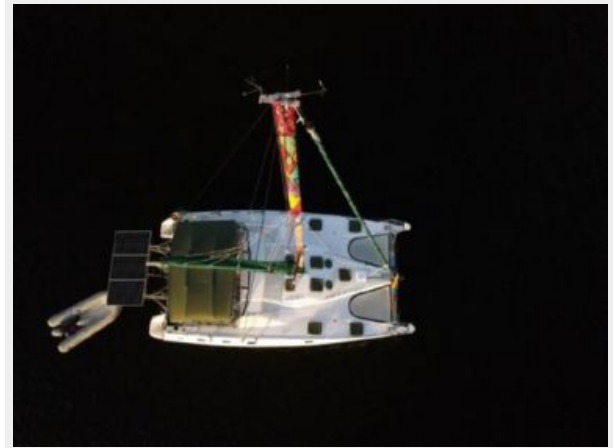
The Company offers the details of this vessel or yacht in good faith but cannot guarantee or warrant the accuracy of this information nor warrant the condition of the vessel. A buyer should instruct his representatives, agents, or his surveyors, to investigate such details as the buyer desires validated. This vessel or yacht is offered subject to prior sale, price change, or withdrawal without notice.

PHOTOS

1



2



3



4



5



6



7



8



9



10



11



12



13



14



15



16



17



18



19



20



21



22



24



23



25



26



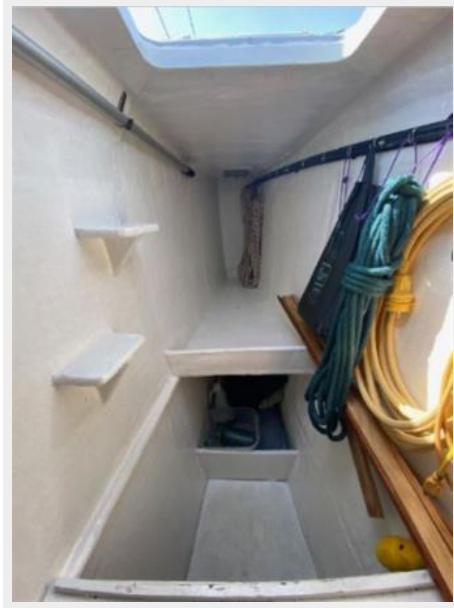
27



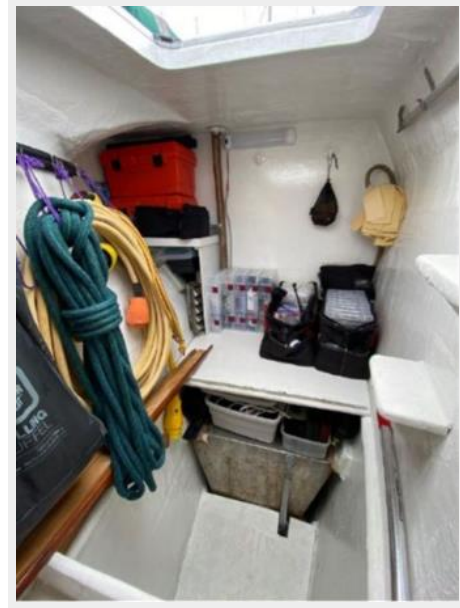
28



29



30



31



32



33



34



35



36



37



38



39



40



41



42



43



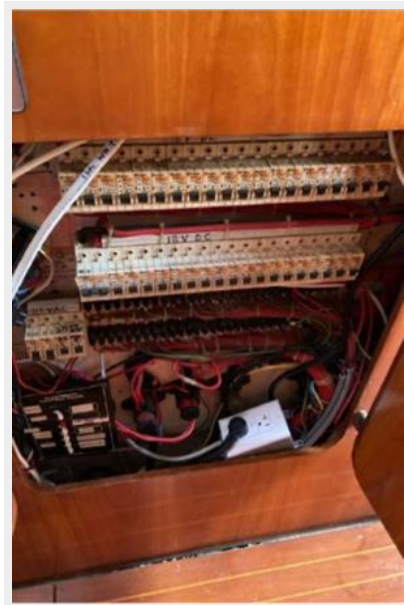
44



45



46



47



48



49



50



51



52



53



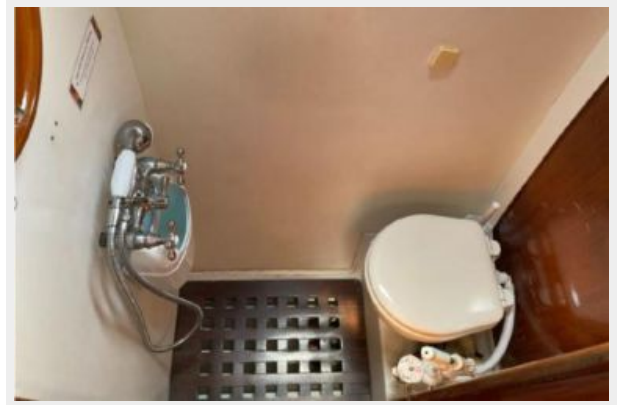
54



55



56



57



58



59



60



61



62



63



64



65



66



67



68



69



70



71



72



73



74



75



76



77



78



79



80



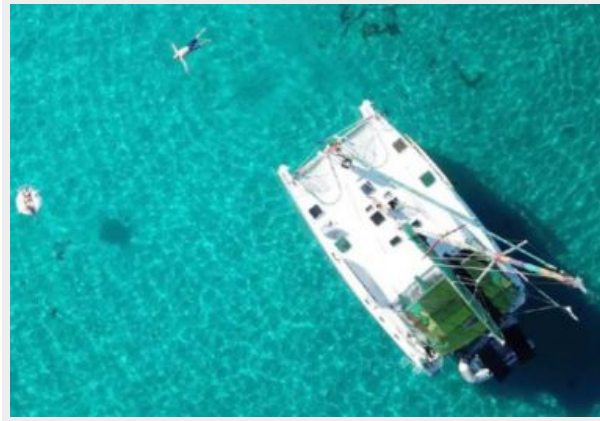
81



82



83



CONTACTS

Andrey Shestakov, leading yacht broker of the sales department of Shestakov Yacht Sales Inc. Shestakov Yacht Sales Inc., the official representative of the Miami/Fort Lauderdale FL headquarters.

Contact details

Email: andrey@shestakovyachtsales.com

Web: shestakovyachtsales.com/en/

Telephones

USA: +1(954)274-4435

Office hours

Monday – Saturday: **9:00 - 21:00** EDT

Sunday: **closed**

Address



Harbour Towne Marina, 850 NE 3rd St,
STE 213, Dania, FL 33004