

JOURNEY — SABRE YACHTS



Судостроитель: [SABRE YACHTS](#)

Год постройки: 2000

Модель: Моторная яхта

Цена: ЦЕНА ЯХТЫ ПО ЗАПРОСУ

Местонахождение: United States

Длина общая: 47' 6" (14.48m)

Ширина: 15' 0" (4.57m)

Макс. осадка: 4' 5" (1.35m)

Крейс. скорость: 20 Kts. (23 MPH)

Макс. скорость: 25 Kts. (29 MPH)

Купить **JOURNEY — SABRE YACHTS** а также выбрать подходящую вам яхту из нашего каталога яхт вам поможет опытный яхтенный брокер Андрей Шестаков. На сегодняшний день компания **Shestakov Yacht Sales Inc.** имеет большое количество яхт в собственном списке продаж, а также тесно сотрудничает со всеми крупными яхтенными производителями по всему миру.

Для того чтобы купить яхту **JOURNEY — SABRE YACHTS** а также проконсультироваться по любому вопросу связанному с покупкой, продажей, чартером яхт позвоните по телефону **+7(918)465-66-44**.

ОГЛАВЛЕНИЕ

ОГЛАВЛЕНИЕ	2
ХАРАКТЕРИСТИКИ	5
Обзор	5
Основная информация	5
Размеры	5
Скорость, вместимость и масса	5
Размещение	6
Корпус и палуба	6
Информация о двигателе	6
ПОДРОБНОЕ ОПИСАНИЕ	7
INTRODUCTION	7
INTERIOR LAYOUT AND FEATURES	7
ELECTRONICS AND NAVIGATION	8
ELECTRICAL SYSTEMS	9
MECHANICAL SYSTEMS	9
EXTERIOR FEATURES AND EQUIPMENT	10
SAFETY EQUIPMENT	10
EXCLUSIONS	11
Исключения	11
Отказ от ответственности	11
ФОТОГРАФИИ	12
Main Salon, Fwd.	12
Main Salon, Helm Station	12
Main Salon, Helm Detail	12
Main Salon, Port, Aft	12
Main Salon, Stbd, Aft	12
Owner's Cabin	12
Owner's Berth	13

Owner's Cabin, Fwd.	13
Owner's Cabin, Port	13
Owner's Head and Shower	13
Fwd. Head	13
Fwd. Cabin	13
Washer/Dryer	14
Galley	14
Looking Fwd.	14
Galley	14
Flybridge	15
Flybridge Helm	15
Side Deck	15
Aft Cockpit	15
Bow, at Anchor	15
Stern View, at Dock	15
Quarter View	16
Running Gear	16
Journey_Panel_1	16
Panel	16
Panel	17
Engine Room	17
Port Engine	17
Stbd. Engine	17
Tender	17
Layout	17
КОНТАКТЫ	18
Контактная информация	18
Телефоны	18
Время работы	18

Адрес

18

ХАРАКТЕРИСТИКИ

Обзор

Handsome Downeast-styled design features two great cabins, raised salon, boat deck and flybridge. Cruise easily at 20 kts!

Основная информация

Тип судна: Моторная яхта	Подкатегория: Flybridge
Модельный год: 2001	Год постройки: 2000
Страна: United States	Верх: Enclosed Pilothouse
Открытая палуба мостика: Да	Кубрик: Да

Размеры

Длина общая: 47' 6" (14.48m)	Длина палубы: 47' 6" (14.48m)
Ширина: 15' 0" (4.57m)	Макс. осадка: 4' 5" (1.35m)
Трапы: 23' 4" (7.11m)	

Скорость, вместимость и масса

Крейс. скорость: 20 Kts. (23 MPH)	Макс. скорость: 25 Kts. (29 MPH)
Водоизмещение: 43000 Pounds	Чистый вес: 21 Pounds
Вместимость воды: 200 Gallons	Вместимость сточного бака: 60 Gallons
Объем топливного бака: 705 Gallons	

Размещение

Всего кают: 2

Всего коек: 4

Спальные места: 6

Всего ком. состава: 2

Корпус и палуба

Материал корпуса: Fiberglass

Материал палубы: Nonskid painted

Комплектация корпуса: Modified Deep Vee

Цвет корпуса: Flag Blue

Дизайнер корпуса: Sabre Design Team

Информация о двигателе

Двигатели: 2

Производитель: Caterpillar

Модель: 3176TA

Тип двигателя: Inboard

Тип топлива: Diesel

ПОДРОБНОЕ ОПИСАНИЕ

INTRODUCTION

JOURNEY is a great example of the Sabreline 47 series that was first introduced in 1996. The design redefined the Downeast-styled motoryacht with a flat sheer, flared bow and a modified deep-V hull planning design to provide cruising speeds in excess of 20 knots at only 1900 rpm. On deck one can enjoy a raised flybridge with generous seating and great visibility, a convenient boat deck for easy tender storage and an aft cockpit area with private entry to owner's cabin. Below decks, the raised salon area and lower helm is great for long term cruising with side doors for easy deck access when docking. And her spacious aft owner's cabin and separate guest cabin forward add further to her many appealing design features.

JOURNEY has been very well cared for with relatively low hours, and has benefitted from many recent upgrades as noted herein. She represents an outstanding value and is an ideal platform for one wishing to enjoy extended long-distance cruising and passage making. New to market.

INTERIOR LAYOUT AND FEATURES

Maine craftsmanship is evident throughout JOURNEY with varnished mahogany interior joinerwork including solid trim, paneled cabin doors and locker/drawer fronts. Varnished oak hull ceilings, teak and holly cabin soles and white overhead panels complete the overall feel of quality and warmth. There are fitted carpets in the galley and cabin areas and cabin fans throughout.

One enters the main salon via sliding doors from each side or by stepping down through a double door from the raised boat deck aft. To starboard is an L-shaped settee and hi-low dining table with drop down leaves. Forward to starboard is the expansive lower helm station with built in helm bench (icemaker under), engine controls, nav instrumentation and electrical switch panels and monitoring systems. The helm chair backrest folds down to create additional counter space for entertaining. To port is an entertainment console with large Samsung Flat screen TV, Bose surround sound and BluRay system plus additional storage, and forward is a countertop opening down to the galley with an under counter freezer unit. The main salon space offers outstanding 360 deg visibility through full size windows in front, back and along the sides, with teak privacy blinds. Side and rear windows are opening.

Walking forward, one steps down in to the U-shaped galley that is open above to the main salon. There is generous countertop space and locker storage. Features include:

- Double stainless steel sinks
- Force 10 electric 3 burner stove with oven
- GE microwave oven
- Sub Zero under counter 110 volt refrigeration

- Whynter stand-alone 110 volt freezer below salon counter (2019)
- Seagull fresh water filter system
- Deck hatch and (2) opening portholes

To starboard is the guest/day head with separate shower stall. There is a sink vanity, Vacuflush toilet, a deck hatch and two opening portholes. There is also a washer/dryer outboard of shower stall.

Further forward is the guest cabin featuring a very generous V-berth with numerous drawers and lockers for storage, with a flat screen TV mounted on bulkhead. There is an overhead hatch along with two opening portholes.

Stepping down just three steps leading aft from the main salon is the spacious owner's cabin. There is a walk-around queen berth with lots of storage outboard each side, as well as a double hanging locker and bureau forward with flat screen TV above. A great feature is the private aft companionway leading to the aft cockpit area via double privacy doors. There is plenty of natural light and ventilation thanks to seven opening portholes with custom shades for privacy. The ensuite owner's head is to port with separate shower stall. There is a sink vanity with mirror, Vacuflush toilet, and one opening porthole and hatch.

ELECTRONICS AND NAVIGATION

Flybridge helm:

- Garmin 5215 chartplotter/HD radar with 4kW open array
- Garmin GMI 10 multifunction display wind/speed/depth
- Standard Horizon VHF radio
- Simrad AP22 autopilot
- Ritchie binnacle compass
- Bose speakers

Lower helm:

- Garmin 5215 chartplotter/HD radar/sounder
- Garmin AIS 600, transmit & receive
- Garmin GMI 10 multifunction display wind/speed/depth
- Garmin 17x GPS receiver
- Simrad AP22 autopilot
- ICOM IC-M59 VHF radio
- Standard Horizon VHF radio
- Garmin GSD 22 digital sounder module
- Airmar wind/weather transducer
- Garmin GXM 51 XM weather module for satellite weather
- Ritchie binnacle compass

Misc. Electronics:

- Intellian I2 satellite TV dome with (3) Direct TV receivers
- (2) IR/color cameras in engine room w/ display on Garmin 5215s
- (4) Remote cameras
- (2) Marantz iPod docking station, one in main salon, one in master cabin
- Fusion AM/FM/iPod/Sirius, MS-IP600
- Fuel flow and main engine data shown on Garmin screens
- WiFi amp
- Wilson cell booster
- ACR spotlight
- High water bilge alarm

ELECTRICAL SYSTEMS

- 110 volt AC and 12/24 volt DC electrical systems
- Main switch panels and controls easily accessible at lower helm area
- Generator, Northern Lights 12KW in sound shield (2,494 hours)
- (3) 8D house batteries new 2019/2020
- Engine start batteries new 2020
- Generator start battery new 2019
- Xantrex 3000 watt inverter/charger and scp monitor (monitor new 2019)
- Cablemaster system in transom with 50' cable and adapters
- Second 50 amp shore power inlet forward at bow with 50' cable when needed
- Bow thruster with controls at both helm stations and dedicated battery bank with Charles 30 amp charger
- Courtesy lights on F/B, side decks and cockpit
- Red overhead lights in wheelhouse area
- Zinc Saver II galvanic isolator
- Bonding system throughout
- Underwater lights (2019)
- Wine cooler on flybridge

MECHANICAL SYSTEMS

- Twin CAT 3176 TA 600 hp diesel engines (2,620/2616 hours) with ZF transmissions
- Third generation updated CAT after coolers, new 2014
- Updated ZF Mathers single lever electronic controls for fingertip maneuvering
- CAT electronic management system conveniently linked to Garmin displays
- 2 1/2" stainless steel shafts with 30x37.5 four blade props
- Groco oil change system
- Engine synchronizer

- Bronze seacocks
- Dual Racor 1000 MA fuel filters
- Racor R24S generator fuel filter
- Algae X filtering system
- SS trim tabs - 12x36
- (3) 12 volt electric bilge pumps
- Bilge blower system
- Marine Air Systems air conditioning with three zones, each 16,000 BTU
- Combomatic washer/dryer
- (2) Vacuflush toilets with discharge direct overboard or to holding tank
- (2) Spare props mounted in lazarette
- Spare shaft mounted in transom tube

EXTERIOR FEATURES AND EQUIPMENT

- Flag Blue Awlgrippped hull with double white boot stripes, gold cove stripe and blue bottom
- Light gray non-skid on deck painted 2019
- Exterior varnish all stripped and renewed 2019
- Muir 1200 windlass with controls at both helms
- CQR 45 lb anchor with 200' chain rode
- Fortress FX-37 anchor with rope/chain rode
- Salt water deck wash forward and aft
- Port and starboard side deck access doors
- (14) Stainless opening portholes
- (4) Opening deck hatches
- Multiple side and rear opening windows
- Stamoid off white bimini top with new polycarbonate side windows 2021
- Twin pedestal chairs on flybridge
- Novurania 335 DL side console 11' dinghy with Yamaha 25 hp outboard
- Nautical Structures AC/120vt 800 lb. low profile davit
- Deck storage chocks for dinghy
- Hinged aluminum mast with aft flood lights, stern camera & flag halyard
- Twin lazarette hatches
- Transom door
- Swim platform with swim ladder and shower
- Rod holders and rocket launchers
- Fresh water wash down aft
- Spare props mounted in lazarette.
- Cable TV, phone and dockside water hook up in aft cockpit
- Varnished flag staff, flag & cover

SAFETY EQUIPMENT

- Viking 6-person life raft (inspected 2019)
- Engine room fire system, halon
- CO meters
- Smoke detectors
- EPIRB
- First aid kit
- (8) PFD's
- Flare kit

EXCLUSIONS

The owner's personal effects are excluded from the sale.

Исключения

При продаже яхты исключаются личные вещи владельца.

Отказ от ответственности

Компания предоставляет описание судна или яхты добросовестно, но не может гарантировать точность этой информации, а также не ручается за техническое состояние. Покупатель должен проинструктировать своих агентов или оценщиков исследовать представленную информацию более подробно, по собственному желанию. Продажа судна или яхты, изменение цены или снятие с продажи будет происходить без предварительного уведомления.

ФОТОГРАФИИ

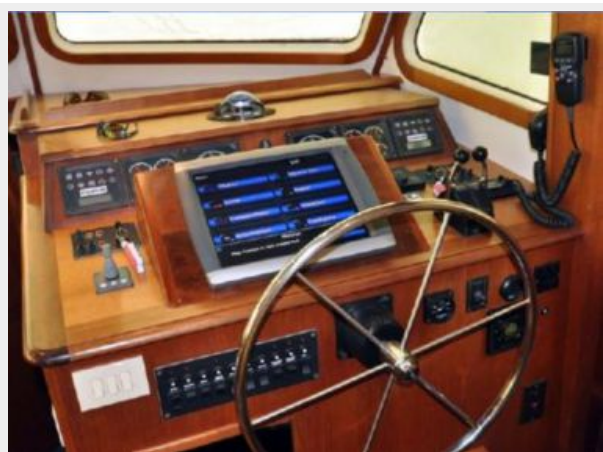
Main Salon, Fwd.



Main Salon, Helm Station



Main Salon, Helm Detail



Main Salon, Port, Aft



Main Salon, Stbd, Aft



Owner's Cabin



Owner's Berth



Owner's Cabin, Fwd.



Owner's Cabin, Port



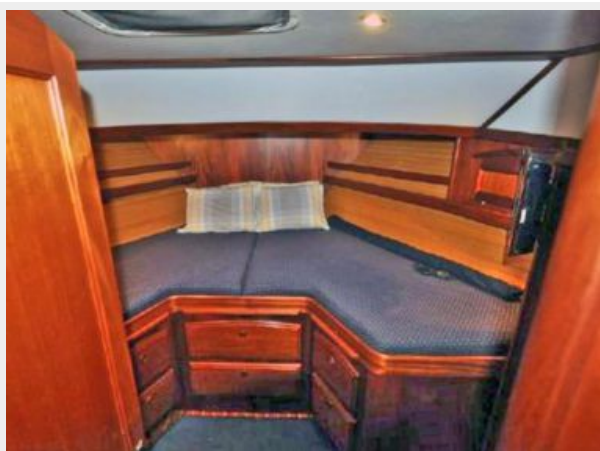
Owner's Head and Shower



Fwd. Head



Fwd. Cabin



Washer/Dryer



Galley



Galley



Looking Fwd.



Flybridge



Flybridge Helm



Side Deck



Aft Cockpit



Bow, at Anchor



Stern View, at Dock



Quarter View



Running Gear



Journey_Panel_1



Panel



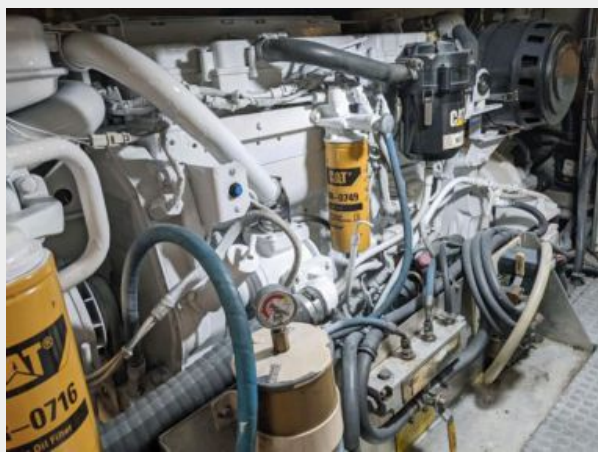
Panel



Engine Room



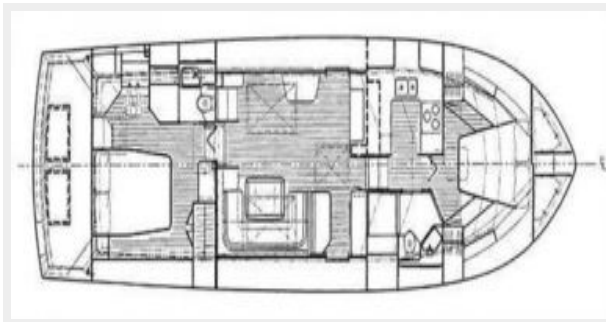
Port Engine



Stbd. Engine



Layout



Tender



КОНТАКТЫ

Андрей Шестаков (Andrey Shestakov) – ведущий яхтенный брокер отдела продаж яхт и судов компании Shestakov Yacht Sales Inc. Официальный представитель Shestakov Yacht Sales Inc. для русскоговорящих клиентов в центральном офисе компании в Майами/Форт Лодердейл/Флорида/США.

Контактная информация

Email: andrey@shestakovyachtsales.com

Web: shestakovyachtsales.com

Телефоны

Краснодарский край: **+7(918)465-66-44**

США, Майами, Флорида: **+1(954)274-4435**

Время работы

Понедельник – Суббота: **9:00 - 21:00**
EDT

Воскресенье: **Закрыто**

Адрес



Harbour Towne Marina, 850 NE 3rd St,
STE 213, Dania, FL 33004