

ESCAPE — HATTERAS



Builder: HATTERAS

Year Built: 1994

Model: Motor Yacht

Price: PRICE ON APPLICATION

Location: United States

LOA: 40' 0" (12.19m)

Beam: 13' 7" (4.14m)

Min Draft: 4' 9" (1.45m)

Max Draft: 5' 0" (1.52m)

Cruise Speed: 12 Kts. (14 MPH)

Max Speed: 20 Kts. (23 MPH)

Our experienced yacht broker, Andrey Shestakov, will help you choose and buy a yacht that best suits your needs **Escape — HATTERAS** from our catalogue. Presently, at Shestakov Yacht Sales Inc., we have a wide variety of yachts available on our sale's list. We also work in close contact with all the big yacht manufacturers from all over the world.

If you would like to buy a yacht **Escape — HATTERAS** or would like help answering any questions concerning purchasing, selling or chartering a yacht, please call **+1(954)274-4435**

TABLE OF CONTENTS

TABLE OF CONTENTS	2
SPECIFICATIONS	5
Overview	5
Basic Information	5
Dimensions	5
Speed, Capacities and Weight	5
Accommodations	6
Hull and Deck Information	6
Engine Information	6
DETAILED INFORMATION	7
MAIN DESCRIPTION	7
WALKTHROUGH	7
ELECTRICAL	7
Electronics	7
DECK	8
Mechanical	8
DISCLAIMER	8
Exclusions	8
Disclaimer	8
PHOTOS	9
1	9
2	9
3	9
4	9
5	9
6	10
7	10
8	10

9	10
10	10
11	10
12	11
13	11
14	11
15	11
16	11
17	11
18	12
19	12
20	12
21	12
22	12
23	12
24	13
25	13
26	13
27	13
28	13
29	13
30	14
31	14
32	14
33	14
34	14
35	14
36	15
37	15

38	15
39	15
40	15
41	15
42	16
43	16
44	16
45	16
46	16
47	16
48	17
CONTACTS	18
Contact details	18
Telephones	18
Office hours	18
Address	18

SPECIFICATIONS

Overview

"ESCAPE" 1994 HATTERAS 40 DOUBLE CABINThe 40 Double Cabin is one of Hatteras' most popular models. Escape has the alternate layout that Hatteras offered in later models. Some of the changes include : *Larger forward stateroom *Larger galley *Redesigned flybridge *Dedicated locker for a washer & dryer In 2020 Escape's galley had a major makeover (countertops/cabinets/cooktop and convection oven), also in 2020 her flybridge & sundeck received a full enclosure. In 2018 a Garmin 1242 Touch MFD was installed, and her clutch & throttle controls were replaced. Escape traveled up to the Georgia coast during spring and back to Florida in the fall. Escape shows very well and is an excellent example of a well maintained Hatteras 40.

Basic Information

Category: Motor Yacht

Sub Category: Aft Cabin

Model Year: 1994

Year Built: 1994

Country: United States

Dimensions

LOA: 40' 0" (12.19m)

Beam: 13' 7" (4.14m)

Min Draft: 4' 9" (1.45m)

Max Draft: 5' 0" (1.52m)

Clearance: 15' 9" (4.80m)

Speed, Capacities and Weight

Cruise Speed: 12 Kts. (14 MPH)

Max Speed: 20 Kts. (23 MPH)

Water Capacity: 110 Gallons

Holding Tank: 60 Gallons

Fuel Capacity: 360 Gallons

Accommodations

Total Cabins: 2

Hull and Deck Information

Hull Material: Fiberglass

Engine Information

Engines: 2

Manufacturer: Caterpillar

Model: 3208

Engine Type: Inboard

Fuel Type: Diesel

DETAILED INFORMATION

MAIN DESCRIPTION

"ESCAPE" 1994 HATTERAS 40 DOUBLE CABINThe 40 Double Cabin is one of Hatteras' most popular models. Escape has the alternate layout that Hatteras offered in later models. Some of the changes include : *Larger forward stateroom* Larger galley* Redesigned flybridge* Dedicated locker for a washer & dryer In 2020 Escape's galley had a major makeover (countertops/cabinets/cooktop and convection oven), also in 2020 her flybridge & sundeck received a full enclosure. In 2018 a Garmin 1242 Touch MFD was installed, and her clutch & throttle controls were replaced. Escape traveled up to the Georgia coast during spring and back to Florida in the fall. Escape shows very well and is an excellent example of a well maintained Hatteras 40.

WALKTHROUGH

Escape offers a comfortable all weather **Sundeck** and **Flybridge** area thanks to her full enclosure. The traffic flow of the flybridge/sundeck and salon make for excellent living areas that are easily accessed. A fiberglass swim platform with ladder is fitted on the transom. Escape's **Salon** offers a dinette, bar/cabinet and a sleeper sofa. A dedicated air conditioning unit with outlets & air return located in the overhead services the salon. Headroom is 6'4". Escape's **Galley** is open with ample storage in cabinets and drawers. Her galley is equipped with : *GE Profile convection/microwave oven* Electric cooktop* Dometic upright fridge/freezer* 110 outlets for appliances Escape's **Forward Stateroom** has two large bunk beds, drawers and a hanging locker. There is a large head, vacuflush toilet and a separate shower that is accessed from inside the stateroom or from the galley area. There is a shared air conditioning unit with the master stateroom. Headroom is 6'3". Escape's **Master Stateroom** offers a queen centerline bed with numerous drawers and a large hanging locker. Air conditioning control is shared with the forward stateroom. Her master stateroom has a private head with separate shower and a vacuflush toilet. Headroom is 6'5" in both stateroom & head.

ELECTRICAL

30 amp shorepower inlet 50 amp shorepower inlet Onan 8kw Generator Mastervolt Chargemaster 12/50-3 Alternators (2) 8D Batteries house & starting with parallel switch DieHard Group 24 starting battery (generator) Monitor gauges at main breaker panel

Electronics

Garmin 1242 Touch MFD (2018) Garmin GPSmap 440s Simrad AP20 autopilot Furuno FET radar (needs service/replacement) Icom VHF KVH dome 32" Sony TV 19" Toshiba TV

DECK

Simpson Lawrence windlass (controls at helm & on foredeck) 36 lb CQR anchor with chain & rode
Bennett trim tabs
Automatic Fire Suppression System in engine room
Guest searchlight with remote controls
Hynautic steering system
(2) Vacuflush toilets with overboard discharge pump
(2) 16k Dometic air conditioners
Washer/dryer (needs replacement)
Horn

Mechanical

(2) Cat 3208 TA 375hp Port - 1291 hrs / Stbd - 1120 hrs Owner reports
35gph @ 1800 rpm (12 kts) Twin Disc transmissions
(2) Racor 500 fuel filters
(2) Five blade propellers
Conventional flax packing (shafts) Onan 8kw Generator 290 hrs

DISCLAIMER

The Company offers the details of this vessel in good faith but cannot guarantee or warrant the accuracy of this information nor warrant the condition of the vessel. A buyer should instruct his agents, or his surveyors, to investigate such details as the buyer desires validated. This vessel is offered subject to prior sale, price change, or withdrawal without notice.

Exclusions

Owner's personal belongings.

Disclaimer

The Company offers the details of this vessel or yacht in good faith but cannot guarantee or warrant the accuracy of this information nor warrant the condition of the vessel. A buyer should instruct his representatives, agents, or his surveyors, to investigate such details as the buyer desires validated. This vessel or yacht is offered subject to prior sale, price change, or withdrawal without notice.

PHOTOS

1



2



3



4



5



6



7



8



9



10



11



12



13



14



15



16



17



18



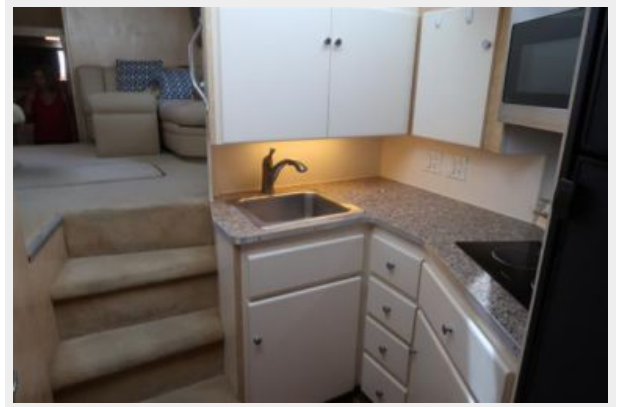
19



20



21



22



23



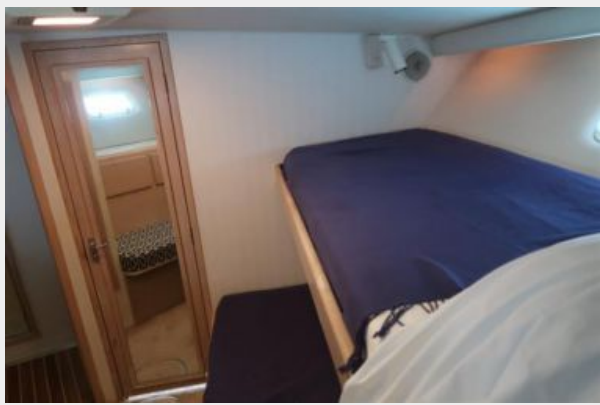
24



25



26



27



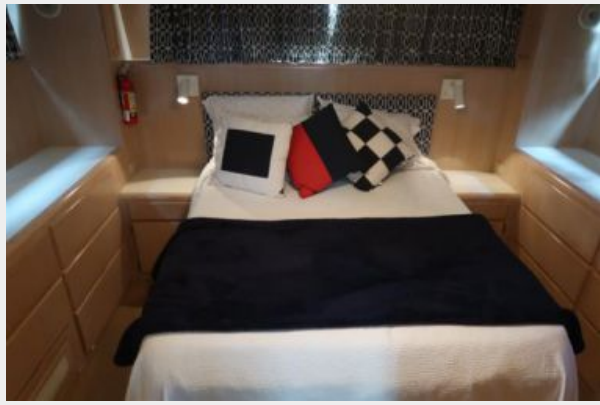
28



29



30



31



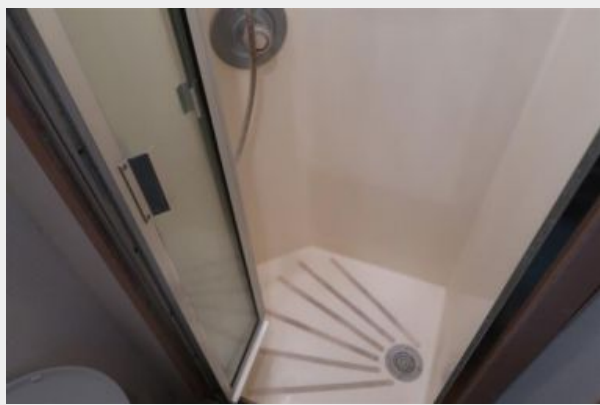
32



33



34



35



36



37



38



39



40



41



42



43



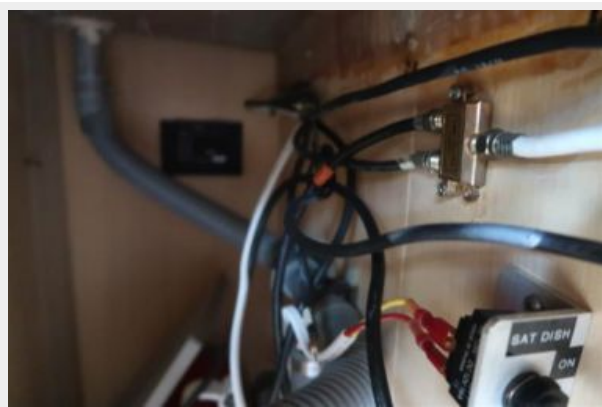
44



45



46



47



48



CONTACTS

Andrey Shestakov, leading yacht broker of the sales department of Shestakov Yacht Sales Inc. Shestakov Yacht Sales Inc., the official representative of the Miami/Fort Lauderdale FL headquarters.

Contact details

Email: andrey@shestakovyachtsales.com

Web: shestakovyachtsales.com/en/

Telephones

USA: +1(954)274-4435

Office hours

Monday – Saturday: **9:00 - 21:00** EDT

Sunday: **closed**

Address



Harbour Towne Marina, 850 NE 3rd St,
STE 213, Dania, FL 33004