

NINA MARIE — VIKING



Судостроитель: VIKING

Год постройки: 2010

Модель: Моторная яхта

Цена: ЦЕНА ЯХТЫ ПО ЗАПРОСУ

Местонахождение: United States

Длина общая: 83' 5" (25.43m)

Ширина: 22' 4" (6.81m)

Макс. осадка: 5' 6" (1.68m)

Купить **NINA MARIE — VIKING** а также выбрать подходящую вам яхту из нашего каталога яхт вам поможет опытный яхтенный брокер Андрей Шестаков. На сегодняшний день компания **Shestakov Yacht Sales Inc.** имеет большое количество яхт в собственном списке продаж, а также тесно сотрудничает со всеми крупными яхтенными производителями по всему миру.

Для того чтобы купить яхту **NINA MARIE — VIKING** а также проконсультироваться по любому вопросу связанному с покупкой, продажей, чартером яхт позвоните по телефону **+7(918)465-66-44**.

ОГЛАВЛЕНИЕ

ОГЛАВЛЕНИЕ	2
ХАРАКТЕРИСТИКИ	8
Обзор	8
Основная информация	8
Размеры	8
Скорость, вместимость и масса	8
Размещение	8
Корпус и палуба	9
Информация о двигателе	9
ПОДРОБНОЕ ОПИСАНИЕ	10
Vessel Overview	10
Salon	10
Galley	10
Office and Storage	11
Companionway	11
Master Stateroom	11
Master Head	12
Forward Stateroom	12
Forward Guest Head	12
Starboard Stateroom	13
Starboard Guest Head	13
Forward Guest Stateroom	13
Ensuite Head- Port Stateroom	13
Crew Stateroom	14
Crew Head	14
Flybridge	14
Electronics and Navigational Equipment	15
Tower	16

Tower Electronics	16
Cockpit	16
Hull, Deck, and Exterior	17
Engine and Mechanical Equipment	18
Исключения	18
Отказ от ответственности	19
ФОТОГРАФИИ	20
DJI_0187	20
DJI_0192	20
DJI_0063	20
DJI_0072	20
DJI_0168	20
DJI_0068	20
DJI_0100	21
DJI_0085	21
DJI_0166	21
DJI_0046	21
DJI_0154	21
DJI_0181	21
DJI_0043	21
DSC05801	21
DSC05812	22
DSC05794	22
DSC05787	22
DSC05783	22
DSC05779	22
DSC05777	22
DSC05773	23
DSC05771	23

DSC05769	23
DSC05934	23
DSC05931	23
DSC05927	23
DSC05925	23
DSC05921	23
DSC05920	24
DSC05913	24
DSC05912	24
DSC05909	24
DJI_0140	24
DJI_0138	24
DJI_0126	24
DJI_0119	24
DSC00006	25
DSC00008	25
DSC00010	25
DSC05815	25
DJI_0109	25
DJI_0113	25
DJI_0097	26
DSC05847	26
DSC05844	26
DSC05839	26
DSC05836	26
DSC05833	26
DSC05826	26
DSC05824	26
DSC05906	27

DSC05822	27
DSC05905	27
DSC05898	27
DSC05897	27
DSC05894	27
DSC05892	28
DSC05889	28
DSC05885	28
DSC05880	28
DSC05877	28
DSC05873	28
DSC05871	29
DSC05869	29
DSC05865	29
DSC05861	29
DSC05859	29
DSC05762	29
DSC05760	29
DSC05756	29
DSC05678	30
DSC05670	30
DSC05667	30
DSC05661	30
DSC05659	30
DSC05654	30
DSC05648	30
DSC05646	30
DSC05642	31
DSC05639	31

DSC05744	31
DSC05741	31
DSC05732	31
DSC05726	31
DSC05722	31
DSC05717	31
DSC05713	32
DSC05708	32
DSC05706	32
DSC05705	32
DSC05702	32
DSC05699	32
DSC05755	33
DSC05697	33
DSC05692	33
DSC05693	33
DSC05690	33
DSC05686	33
DSC05954	34
DSC05949	34
DSC05948	34
DSC05947	34
DSC05945	34
DSC05943	34
DSC05939	34
DSC05936	34
КОНТАКТЫ	35
Контактная информация	35
Телефоны	35

Время работы	35
Адрес	35

ХАРАКТЕРИСТИКИ

Обзор

This 2010 Viking 82 Convertible, NINA MARIE, is a fine example of a very lightly fished 82 Viking sportfish. Powered by twin MTU M93 16V2000 2400HP, with just 1800 hours, this five stateroom, six head layout has the interior volume of a much larger motor yacht and the sea-keeping ability of a Viking sportfish. She has only burned 51,000 gallons of fuel per side.

This 2010 Viking Yachts 82 Convertible Sportfish NINA MARIE is equipped for both US and European power for travels abroad and truly is a rare opportunity.

Основная информация

Тип судна: Моторная яхта

Модельный год: 2010

Год постройки: 2010

Страна: United States

Размеры

Длина общая: 83' 5" (25.43m)

Длина по ватерлинии: 71' 0" (21.64m)

Ширина: 22' 4" (6.81m)

Макс. осадка: 5' 6" (1.68m)

Скорость, вместимость и масса

Водоизмещение: 324500000 Pounds

Вместимость воды: 450 Gallons

Вместимость сточного бака: 280 Gallons **Объем топливного бака:** 3000 Gallons

Размещение

Всего кают: 5

Всего ком. состава: 6

Корпус и палуба

Материал корпуса: Fiberglass

Информация о двигателе

Двигатели: 2

Производитель: MTU

Модель: M93 16V2000

Тип двигателя: Outboard

Тип топлива: Diesel

ПОДРОБНОЕ ОПИСАНИЕ

Vessel Overview

NINA MARIE is a full five stateroom, six head layout that sleeps ten with an aft full beam master. Her highly customized interior features many upgrades including granite tops throughout, satin interior teak finish. She is powered by twin MTU M93 16V2000 2400HP, with just 1800 hours.

In addition to the full-beam master, NINA MARIE has four additional cabins, each with an ensuite head. In addition, she is outfitted with an on-deck head and A/C power converters for both US and foreign travel.

Salon

- Satin finish throughout
- Clear icemaker
- Upgraded entertainment center
- Electric door opener
- 50" TV, pop-up
- Day Head with granite vanity top
- Teak cocktail table
- (3) Barstools with backs
- Hunter Douglas silhouette blinds
- Carpeting with lead-lined padding
- Moritz octoplex electric panel
- Full canvas carpet runner
- Dimmers for quartz lights
- Dimmers for LED overhead lights
- Upgraded sofa style
- Teak trim where Amtico floor meets carpet
- Amtico Rosewood flooring at Salon entrance
- Teak strips in headliner
- Teak valances (fluted)
- Teak framed lambrequins with fabric
- Bottle storage
- Indirect rope lighting behind valances

Galley

- Granite countertops
- Dishwasher, drawer type

- Trash compactor
- Beveled mirrored backsplash
- Stainless steel under-mounted sink
- Amtico flooring
- Sub-Zero refrigerator and freezer
- Electric range four-burner cooktop surface mount
- Garbage disposal
- Microwave/convection oven
- Storage cabinets and drawers
- Teak dinette table with teak pedestal and ring
- Dinette couch with storage underneath
- Storage cabinets in upper galley satin teak doors
- Storage cabinets and drawers in lower galley satin teak doors and faces with storage for utensils and other items

Office and Storage

Located just forward of the galley, this area has a built-in desk and storage bins. It also has an additional freezer.

Companionway

- Vertical teak strips between wall panels
- Canvas carpet runner with step cover
- Central vacuum
- Access to pantry
- Laundry center with washer and dryer
- Magnetic switches for bilge lights
- Wrapped hatch carpet installation

Master Stateroom

- Double insulation between headliner and galley floor
- King-sized bed with lift top and storage
- Upgraded mattress, System #3
- Desk with lift top (mirror on bottom of lift top) and vanity stool
- Port and starboard hanging lockers
- Upgraded carpet and fabrics
- 46" LCD flat-screen TV with FM/DVD surround sound system
- SAT-TV receiver

- Portlights with electric shades port and starboard
- Lounge to starboard
- Credenza forward of bed
- Reading lights with separate switches
- Indirect rope light under bed
- End table with storage
- Custom wallpaper

Master Head

- Upgraded glass vanity mirror
- Mirrored ceiling
- Granite vanity top
- Twin sinks and cabinet storage
- One-piece, frameless shower door
- Large stall shower
- Sealand Magnum Opus head, vaccuflush
- Exhaust fan
- Linen storage
- Custom wallpaper
- Teak face on lower vanity
- Custom black walnut Amtico wood flooring

Forward Stateroom

- Island queen bed with lift top storage
- 26" Flat-screen TV
- Upgraded Mattress System #1
- Overhead hatch with screen and blackout
- Upgraded carpet and fabrics
- Ample storage cabinets
- Hanging locker
- LED overhead lights with dimmer
- Reading lights with separate switches
- Custom wallpaper
- 12V CD/DVD/stereo
- SAT receiver

Forward Guest Head

- Granite vanity top
- Teak face on lower vanity
- One-piece, frameless shower door
- Custom American Ash with rosewood border Amtico flooring
- Sealand Magnum Opus head vaccuflush
- Exhaust fan

Starboard Stateroom

- Side by side twin berths with storage below and end table between
- Hanging locker with drawer storage below
- Flat-screen TV
- CD/DVD/stereo player
- Reading lamps
- Custom wallpaper and fabrics
- Access to the ensuite head
- SAT-TV receiver

Starboard Guest Head

- Picture frame molding around mirrored vanity above
- Teak vanity below
- Mirrored ceiling
- Granite countertops
- Custom Amtico wood flooring
- Large stall shower

Forward Guest Stateroom

- Queen-sized walk-around bed with upgraded mattress and lift up top with gas pistons
- Cedar-lined storage underneath berth
- Hanging locker with drawer storage below
- 19" LCD TV
- CD/DVD player/stereo
- Reading lamps
- Custom wallpaper and fabrics
- Access to the ensuite head
- SAT receiver

Ensuite Head- Port Stateroom

- Framed vanity mirror
- Teak vanity below
- Granite countertops
- Custom Amtico wood flooring
- Large stall shower
- Freshwater vaccuflush head

Crew Stateroom

- Upper & lower desk with stool
- Hanging locker
- Custom Amtico flooring
- 19" LCD TV
- 12V CD/DVD/stereo
- Upgraded memory foam mattress
- LED reading lights for both bunks
- Upgraded fabrics
- SAT receiver

Crew Head

- Sealand vaccuflush head
- Stall shower
- Exhaust fan
- Granite vanity top
- Teak face on lower vanity
- Custom Amtico wood flooring

Flybridge

- (3) Murray helm chairs
- Teak helm pod
- iPod stereo plug
- Side power bow thruster control
- Cummins generator remote panels
- Ice machine remote panel
- Clarion marine stereo
- Bow thruster controls in pod handles
- 12V plug
- Teak decking steering station
- Freezer with access port and starboard

- Rod racks in bench seats
- Sink with sprayer
- Freshwater
- Chamois storage tubes
- U-shaped seating with teak tabletop
- Teak flooring beneath the table
- Drink box-starboard
- Three-Sided Costa clear enclosure with vents
- JL Audio marine speakers
- Molded-in lights beneath hardtop-Tri Color
- Dropdown electric box
- Hydraulic outriggers with locks
- Aft rail rocket launcher
- Spotlight and control pad
- (2) Recessed electric teaser reels Miya Epoch US9 HD heavy-duty 24V
- Freshwater washdown
- Navigation lights port and starboard molded
- Stern light molded
- Electronics box electronic fold down
- Jump seat backrest
- Molded-in lights beneath hardtop Tri-color
- Dropdown electric box
- Hydraulic outriggers with locks
- Aft rail rocket launcher
- Spotlight and control pad

Electronics and Navigational Equipment

- Radar-plotter Furuno Navnet 3D MFDBB processor
- Radar Furuno Navnet 3D DRS25A 25kW 96 nautical miles
- (4) 19" Monitor LCD glass bridge marine-KEP
- Furuno Navnet 3D plotter
- Northstar 6100I, 8"
- Furuno DFF3 Navnet sounder
- Sounder-XDCR 2KW 50KHZ Furuno CA50BL-12 HR
- Sounder-XDCR 2KW 200KHZ rubber coated
- Simrad AP2403-autopilot
- (2) Icom VHF IC-M604 black radios
- AIS Furuno FA30 black box 12/24 DC
- Clarion CMD5 CD/MP3/WMA receiver
- Sirius SAT radio
- Clarion tuner
- Itech STS-1000 marine amplified Wi-Fi system

- Satellite phone-KVH TP252
- D-Link router
- Panasonic 2 line cordless phone system-KX-TGA670B 5.8 GHZ digital
- Sirius satellite radio
- Elbex color ball 4mm camera system
- KVH Tracvision TV with gyro 24" dish
- (6) DSS Direct TV receivers

Tower

- Tuna tower with molded top 12' gap, brushed pipe
- Upgrade hardtop lights to Tri-color integrated illuminated system lights with fiberglass recess lights to be blue, white, and red
- Radar pod large oval style, new design with sliding door for teaser reels
- Molded standing platform with coupler box on platform
- Molded 2-in-1 LED 24V light pod with stainless steel bezel
- LED 24V molded forward platform stainless steel bezel
- Control box 60" with flush-mounted compass
- Trim tab switch on control box
- Control box cover
- Paint top of control box satin black
- Tower sunshade molded with painted oval center tube, 5 welded antenna mounts
- Lower horizontal safety rail welded below double aft bridge rail
- Outrigger Pipewelders, (4) spreader, bridge release, large solid aft bar installed -hydraulic
- Center rigger pipe welders

Tower Electronics

- Furuno Navnet 3D 8.4" LCD plotter
- VHF Icom command mic HM-162
- Furuno RD 30
- Start and stops
- Steering and controls

Cockpit

- Custom teak on sole and mezzanine
- Mezzanine with aft seating, bait freezer, tackle center, large storage area, pullout drawers
- Armrest cushions with cup holder
- Refrigerated chill box in step
- Rod holders (8) release screwless

- Transom mounted fish box/Livewell
- Livewell in recessed deck box
- Murray marine offset fighting chair
- Cockpit cover
- Dometic ice chipper
- Storage freezer in port mezzanine
- Quick disconnect fittings for all exterior water inlets and outlets
- Port and starboard storage cabinets under gunwale
- Electric sliding door to salon
- Overhead with LED Lights
- Valve to fill water tank from dockside inlet
- Cutting boards (bottom of transom box lids)
- Transom swim steps
- Insulated fish box lids
- Dimmer on overhead lights
- Bait trays for freezer
- Engine room access
- (2) Cablemaster for shore cords(100 amps)
- White power cords
- (3) Rod holders on tower legs
- Cable TV & phone connections
- Fresh & saltwater washdown
- Indirect LED rope lighting
- Bose stereo speakers
- Cockpit camera system
- Canvas extended flybridge overhead

Hull, Deck, and Exterior

- Custom blue hull color
- Rub rail painted to match gel coat
- Prop pockets to reduce draft
- Wash down in anchor locker
- Stainless steel gas springs anchor locker hatch
- Handrails (follow window line)
- Additional fuel tank-total 3600 gallons
- Hydraulic bow thruster
- (4) Aft underwater lights
- Muir Atlantic 4000 windlass
- Blue bottom paint and boot stripe
- Fiberglass side thru hulls
- Underwater exhaust system
- Dripless shaft seals water supply from both engines

- Trim tabs
- Anchor and rode (50' chain & 300' rope)
- Snow White house color
- Aluminum bow rail
- Transom door with flip-up lid
- Anchor
- UMT 2200 lb davit with lift and rotation
- Black painted windshield mask

Engine and Mechanical Equipment

- Twin MTU 16V 2000 M93 2400 HP
- (2) 32 kW Onan generators diesel with gas-water separators
- 800-gallon GPD watermaker with auto back flush
- Air conditioning, chilled water (2) 5-ton units zoned with reverse cycle heat
- Oil change system for engines, generators, transmissions
- VIPER steering system
- Structural steel engine beds
- (3) 24V in fiberglass boxes battery banks (24V) in fiberglass boxes
- (3) Battery chargers
- Delta-T ventilation system
- Gauge package aft entrance door
- Fire suppression system
- All pumps and thru-hulls painted
- Line from oil change system to cockpit deck box
- 110V outlet at entrance
- Painted bilge and anchor locker
- Headhunter freshwater pump
- White fire bottle
- (2) Toolboxes, painted
- Drip pans under all chilled water system valves (condensation)
- Bilge pumps with cleanout pumps in keel area
- Freshwater filter
- Freshwater spigot
- Fuel priming pumps
- Fuel transfer and monitoring system
- Racor Fuel filters
- 40 Gallon water heater

Исключения

При продаже яхты исключаются личные вещи владельца.

Отказ от ответственности

Компания предоставляет описание судна или яхты добросовестно, но не может гарантировать точность этой информации, а также не ручается за техническое состояние. Покупатель должен проинструктировать своих агентов или оценщиков исследовать представленную информацию более подробно, по собственному желанию. Продажа судна или яхты, изменение цены или снятие с продажи будет происходить без предварительного уведомления.

ФОТОГРАФИИ

DJI_0187



DJI_0192



DJI_0072



DJI_0063



DJI_0068



DJI_0168



DJI_0100



DJI_0085



DJI_0166



DJI_0046



DJI_0154



DJI_0181



DJI_0043



DSC05801



DSC05794



DSC05812



DSC05787



DSC05783



DSC05779



DSC05777



DSC05773



DSC05771



DSC05769



DSC05934



DSC05931



DSC05927



DSC05925



DSC05921



DSC05920



DSC05913



DSC05912



DSC05909



DJI_0140



DJI_0138



DJI_0126



DJI_0119



DSC00006



DSC00008



DSC00010



DSC05815



DJI_0113



DJI_0109



DJI_0097



DSC05847



DSC05844



DSC05839



DSC05836



DSC05833



DSC05826



DSC05824



DSC05822



DSC05906



DSC05905



DSC05898



DSC05897



DSC05894



DSC05892



DSC05889



DSC05885



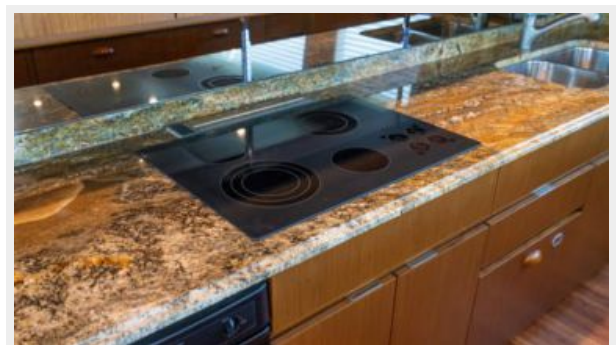
DSC05880



DSC05877



DSC05873



DSC05871



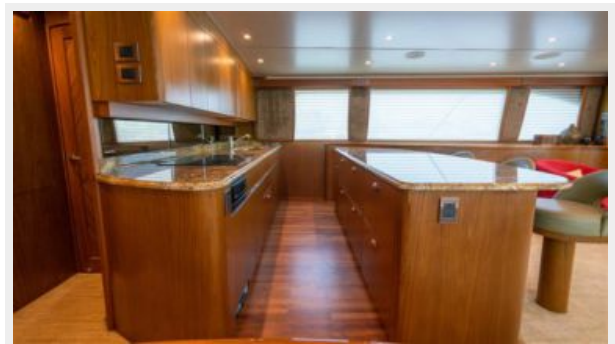
DSC05869



DSC05865



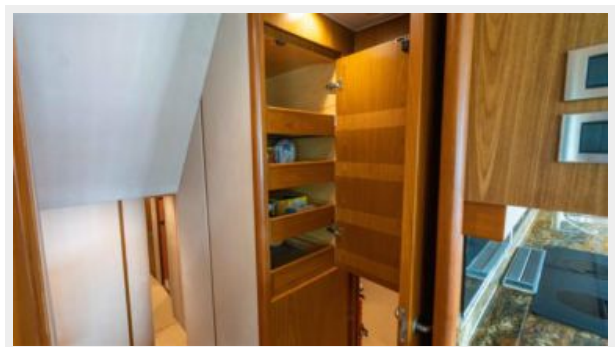
DSC05861



DSC05859



DSC05762



DSC05760



DSC05756



DSC05678



DSC05670



DSC05667



DSC05661



DSC05659



DSC05654



DSC05648



DSC05646



DSC05642



DSC05639



DSC05744



DSC05741



DSC05732



DSC05726



DSC05722



DSC05717



DSC05713



DSC05708



DSC05706



DSC05705



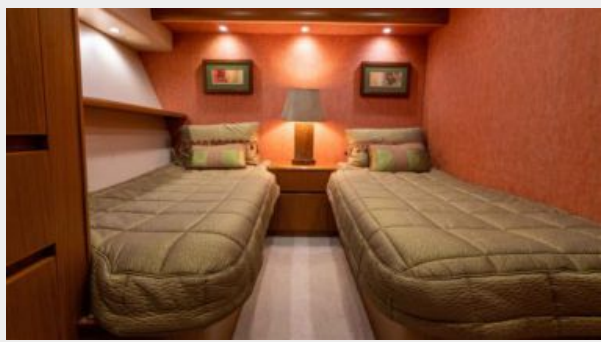
DSC05702



DSC05699



DSC05697



DSC05755



DSC05692



DSC05693



DSC05690



DSC05686



DSC05954



DSC05949



DSC05948



DSC05947



DSC05945



DSC05943



DSC05939



DSC05936



КОНТАКТЫ

Андрей Шестаков (Andrey Shestakov) – ведущий яхтенный брокер отдела продаж яхт и судов компании Shestakov Yacht Sales Inc. Официальный представитель Shestakov Yacht Sales Inc. для русскоговорящих клиентов в центральном офисе компании в Майами/Форт Лодердейл/Флорида/США.

Контактная информация

Email: andrey@shestakovyachtsales.com

Web: shestakovyachtsales.com

Телефоны

Краснодарский край: **+7(918)465-66-44**

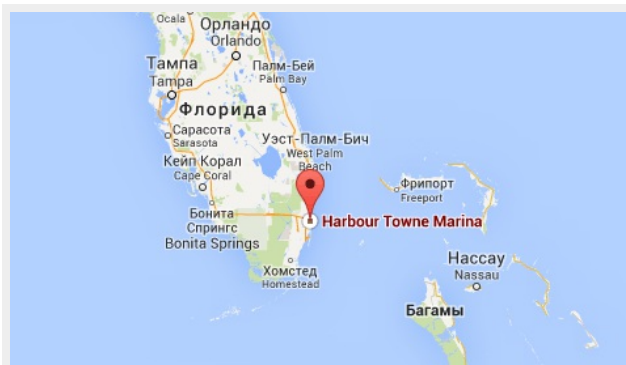
США, Майами, Флорида: **+1(954)274-4435**

Время работы

Понедельник – Суббота: **9:00 - 21:00**
EDT

Воскресенье: **Закрито**

Адрес



Harbour Towne Marina, 850 NE 3rd St,
STE 213, Dania, FL 33004