

870 FLYBRIDGE — FERRETTI YACHTS



Builder: FERRETTI YACHTS

Year Built: 2013

Model: Motor Yacht

Price: PRICE ON APPLICATION

Location: United States

LOA: 87' 0" (26.52m)

Beam: 20' 6" (6.25m)

Min Draft: 6' 3" (1.91m)

Max Draft: 6' 5" (1.96m)

Cruise Speed: 24 Kts. (28 MPH)

Max Speed: 31 Kts. (36 MPH)

Our experienced yacht broker, Andrey Shestakov, will help you choose and buy a yacht that best suits your needs 870 Flybridge — FERRETTI YACHTS from our catalogue. Presently, at Shestakov Yacht Sales Inc., we have a wide variety of yachts available on our sale's list. We also work in close contact with all the big yacht manufacturers from all over the world.

If you would like to buy a yacht 870 Flybridge — FERRETTI YACHTS or would like help answering any questions concerning purchasing, selling or chartering a yacht, please call +1(954)274-4435

TABLE OF CONTENTS

TABLE OF CONTENTS	2
SPECIFICATIONS	5
Overview	5
Basic Information	5
Dimensions	5
Speed, Capacities and Weight	6
Accommodations	6
Hull and Deck Information	6
Engine Information	6
DETAILED INFORMATION	7
Vessel Walkthrough	7
Main Salon	8
Galley	9
Master Stateroom	9
VIP Stateroom	9
Port Guest Stateroom	10
Starboard Guest Stateroom- Twin Berths	10
Flybridge	11
Wheelhouse Equipment	11
Deck Equipment	12
Crew Quarters	12
Engine Equipment	13
Exclusions	13
Disclaimer	14
PHOTOS	15
87_ferretti_salon	23
87_ferretti_salon	23
87_ferretti Dayhead	29

87_ferretti Head	29
87 Ferretti - Master Stateroom	29
87 Ferretti - Master Head	30
87 Ferretti - Master Head	31
87_ferretti_port_guest_stateroom	34
87_ferretti_port_guest stateroom	35
87_ferretti port_guest_stateroom	35
87_ferretti_starboard_guest_head	36
87_ferretti_starboard_guest_head	36
87_ferretti_starboard_guest_stateroom	36
87_ferretti_starboard_guest_stateroom	36
87_ferretti_starboard_guest_stateroom	37
87_ferretti_starboard_guest stateroom	37
87_ferretti crew	37
87_ferretti crew	38
87_ferretti crew	38
87_Ferretti Crew	38
87 Ferretti_Crew	38
87_ferretti crew	39
87_ferretti crew	39
87_ferretti crew head	39
87_ferretti engine_room_	41
87_ferretti_mechanical_room	41
87_ferretti mechanical_room	42
87_ferretti_mechanical_room	42
87_ferretti_mechanical_room	42
87_ferretti_mechanical_room	42
87_ferretti_mechanical_room	42
CONTACTS	43
Contact details	43

Telephones	43
Office hours	43
Address	43

SPECIFICATIONS

Overview

2013 Ferretti 870

Highlights

- US Spec'ed
- Aft Garage (Beach Club)
- Flybridge Jacuzzi
- 4/4 Layout + Dayhead
- Upper & Lower Helm
- (2) Watermakers
- Spot Zero
- FLIR
- KVH SAT
- Flybridge Davit

Basic Information

Category: Motor Yacht

Model Year: 2013

Year Built: 2013

Country: United States

Fly Bridge: Yes

Dimensions

LOA: 87' 0" (26.52m)

Beam: 20' 6" (6.25m)

Min Draft: 6' 3" (1.91m)

Max Draft: 6' 5" (1.96m)

Speed, Capacities and Weight

Cruise Speed: 24 Kts. (28 MPH)

Max Speed: 31 Kts. (36 MPH)

Displacement: 308000000 Pounds

Water Capacity: 349 Gallons

Fuel Capacity: 1955 Gallons

Accommodations

Total Cabins: 4

Total Heads: 5

Hull and Deck Information

Hull Material: Fiberglass

Engine Information

Engines: 2

Manufacturer: MTU

Model: V12 2000 M94

Engine Type: Inboard

Fuel Type: Diesel

DETAILED INFORMATION

Vessel Walkthrough

2013 Ferretti 870

Highlights

- 1000Hrs on the MTU's
- US Specced
- Aft Garage (Beach Club)
- Flybridge Jacuzzi
- 4/4 Layout + Dayhead
- Upper & Lower Helm
- (2) Watermakers
- Spot Zero
- FLIR
- KVH SAT
- Flybridge Davit
- Country Kitchen
- 4 staterooms/ 4 bathrooms + added day head on main deck
- Full Beam Master Stateroom with Large Windows
- Spacious Flybridge with Hardtop and Sunroof, Jacuzzi, Ample amount of Seating and Cocktail Bar.

A stylish Italian flybridge yacht that is sleek and speedy with large volumes and has been well maintained since her launch. Welcoming eight guests in four spacious cabins, she has a timeless and modern decor featuring dark woods and cream soft furnishings.

Able to host eight guests in four cabins, this vessel's timelessly modern decor delivers a welcoming environment from the moment guests step onboard. The inviting main salon is home to expansive white leather sofas, an entertainment system, and a full dining table in easy reach of the modern galley. Dark wood floors paired with soft furnishings with a light palette invoke a stylish setting, with natural light filling the salon. A TV and plenty of additional seating ensure the

whole family can enjoy the main salon altogether. This is the social hub for all guests to gather and relax in luxurious comfort.

All guest cabins are located on the lower deck, including the full-beam king master. This impressive cabin mirrors the stylish decor of white leathers and dark woods found in the main salon, with features including the large shower and his and hers sinks. An ensuite VIP suite is positioned forward, with two further twin cabins, one of which can be converted to a King for accommodation versatility. All staterooms boast luxurious finishes standard with all Ferretti-built yachts.

Outdoor spaces are impressive, with plenty of different hubs to choose from. The forward main deck is home to large sun pads, and the main aft deck is a shaded haven with a dining table and full cocktail bar – the ultimate space to entertain. The flybridge has many features include a large seating setup, with u-shaped seating and a dinette, television, and sun pads, not forgetting an inviting Jacuzzi. An all-weather television is perfect for outdoor movie sessions or for watching the latest sports game in style. Optional shading means the flybridge can be adapted to suit all weather conditions. The flybridge aft houses the inflatable tender and crane for easy removable once you arrive at your next anchorage and can easily accommodate a few sun loungers.

Powered by twin MTU 12V2000 M94 1920HP engines, she cruises at 24 Knots, reaching exciting speeds of 31 knots. A modern wheelhouse is complemented by a steering station on the flybridge. There is storage for plenty of tenders and toys and easy access to the ocean via the swimming platform.

Delivering generous volumes and stylish Italian design, this 87' 2013 Ferretti High-Performance Yacht is a stylish haven on the sea.

Main Salon

- (2) Sofas
- Arm Chair and Coffee Table
- Bose System
- Isotherm Pull Out Cooler Drawer just inside Salon Door
- Aft Tempered Glass Sliding Door with Stainless Steel Frames
- Air Conditioning

- (2) Bookshelves
- Fitted Wood Floor with Soundproof Underlining
- High Fi Bose AV System
- Popup 42" LCD TV with Electric Lift
- Dining Room Table
- Stemware & Dishware Services for 12
- Day Head

Galley

- GE Profile Side-by-side refrigerator
- Bosch 5 Burner Induction Cooktop
- Miele Oven
- Lisa Stainless Steel Sink with Braun Sink Fixture
- Ernestomeda Exhaust Fan
- Fusion Stereo for Chef in Galley
- Miele Dish Washer
- Scottmann CU 50 Clear Ice, icemaker

Master Stateroom

- King Custom handcrafted Mattress with Pillowtop
- Starboard side Sette with Sliding Breakfast Table
- Large Hullside Picture Window with Dual Opening News Port Lights for Natural Ventilation
- 35" Samsung Flatscreen TV
- Portside Makeup Table with Seat for flanked by four Pull Out Drawers
- Bose System
- Walk-In Wardrobe with Hanging Rail Mirror Closet & Shelf
- Safe
- Under Bed Drawer Storage
- Additional Hanging Locker
- Mirrored Headboard
- Overhead Detail
- Fabrica Carpet
- Ensuite Head with Dual White Basin Sinks over a Natural Stone Backsplash and Counter Top
- (3) Mirrored Medicine Cabinets
- Full Natural Stone Shower with Natural Stone Floor and Seamless Drains
- Overhead Rainforest Shower
- Handheld Wand Shower
- Custom Todo Head with Auto Lift, Bidet, and Warming Seat
- Opening News Port Light in Head
- Opaque Sliding Door to closer off Toilet Room
- Natural Ventilation under Bed

VIP Stateroom

- Queen Bed

- Overhead Escape Hatch w/Blackout
- Large Picture Windows
- Opening News Port Lights for Natural Ventilation
- Port & Starboard under Bed Cabinets
- Large Centerline pull out Drawer
- Walk-in Closet w/ Igloo Refrigerator & Floor to Ceiling Mirror
- Blackout Shades and Sheer Roman Shades
- PortSide Makeup Table
- Stitched Leather Inlays
- Fusion MS-AV 600 DVD Player with iPod Dock and Remote
- Direct TV HD DVR
- 32' Vizio TV
- Ensuite Head with Flushfill Wood Floors
- Natural Stone Backsplashes and Counter Tops with Helena Basin Sink
- Helena Wand Shower Fixtures
- Seamless Floor Drains
- Techma Elongated Head
- Planit Towel Bar
- Natural Ventilation under Bed

Port Guest Stateroom

- Twin Beds which can be slid together to form a Full Second VIP Stateroom
- Large Hullside Picture Window with dual News Opening Hullside Windows for Ventilation
- Overhead detailing
- Samsung 38" LCD Flatscreen TV
- Foldout Makeup Table below TV with Mirror
- Natural Stone Counter Tops and Backsplashes with White Basin Sink and Helena Fixtures
- Fore and Aft LED reading lights
- FireSafety Smoke Detector
- Large Hanging Locker Fore and Aft of Bed
- (2) Large Pullout Drawers
- Flushfill Wood Floor with Seamless Drain in Shower
- Stitched Patrone Frau Leather Surfaces
- Natural Ventilation under Bed

Starboard Guest Stateroom- Twin Berths

- Side by Side Twin Beds with Drawer Storage underneath
- 25" LCD TV
- LED Reading Lights
- Large Hullside Windows with Dual Opening News Port Lights

- Smoke Detector
- LED Lighting Ensuite Head
- Sheer Roman with Blackout Shade
- Natural Ventilation under Bed

Flybridge

- Access from the Cockpit through Teak Covered GRP Steps with Stainless Steel Handrail
- Access from forward Salon via Wooden Stairs through Aluminum & Lexan Hatch
- TV
- Detachable and directable spotlight
- Dining Area with Large Table
- Overhead Hardtop with opening Sunroof Liferrafts for 16 People
- Fully optioned Wet Bar with Sink and Custom Clear ice Scottsman icemaker & Dual Gaggenau Electric Grill Plexiglass & Stainless Air Deflectors
- Sunlounge Pad to Starboard of Helm with Sunbathing Cushions
- Ample DC Gold Speakers tied to Fusion Stereo with WIFI & Bluetooth Interfaces

Wheelhouse Equipment

- (2) MTU V12 2000 M94 1920 HP Engines
- FLIR
- Bose System
- Apple TV
- (2) Direct TV Receivers
- KVH Trackvision
- Minuteman Pro 1000RT Power Supply
- iPad Mini RTI Remote
- Global Star Phone Receiver
- Furuno HS4721 VHF w/ DSC
- Furuno FM4721 VHF Mic
- Furuno Nav Net 30 W BB Radar & BB Sounder
- Engine Room Cameras
- American Bow Thruster
- Dual Searchlights
- Twin Mitsubishi Heavy Industries Anti! Roll Gyro Stabilizers
- Quick Chain Counter for Windlass
- ZF Electronic Controls
- Furuno Nav Pilot Furuno
- RD-33
- (2) Master LCD Monitors M17-41

Deck Equipment

- (2) Aft and (3) Bow Roller Fair Leads
- Access to Aft Platform through GRP and Teak Steps with Stainless Steel Handrail and SS and Plexiglass Plates
- (2) GRP Boarding Gates with Breakable Handrails
- (2) SS Bow Hawses Pipes
- (2) Bruce Style Anchors with ample Chain
- (2) 2700 Watt Electric Anchor Windlasses with controls at Bow Main Helm Position and Flybridge Helm Position
- Electrohydraulic Garage Door laid in Teak which folds out into Transom Beach Club
- (2) Concealed Foot Controlled Electric Windlasses in Aft Mooring Stations
- Wet Bar on the Portside of the Cockpit with Sink, Handheld Shower with Hot & Cold Shower on Aft Platform
- Icemaker in the Cockpit
- Indirect Lighting under Toekick surrounding the Side Decks
- Exterior Mesh Protective Window shades
- Pull Handles for Engine and Generator Shutdown and activation of Fire Extinguishing System
- Seawater Fire Fighting Hose
- Side Exit Door from Galley to Walkaround Deck
- Stern Bend Seat with 3-Seat Sofa (in the process of conversion to Sun Pad)
- Teak Aft Platform with Electrohydraulic Foldaway Bathing Ladder
- Sunlounge Pad at Bow with Custom Headrest and Sunbathing Cushions
- Custom Speakers in Bow Bulwarks
- Telescopic Stainless Steel Gangway with Electro-Hydraulic Movement, Remote Control, and Automatic Stanchion
- Overhead DC Gold Stereo Speakers

Crew Quarters

- Access from Aft Deck down stairwell
- Washer/Dryer
- Living Area with dual small Sofas and Table
- (2) Staterooms
- (1) Stacked Bunks
- (1) Captains Cabin
- Each Cabin has a Opening Porthole

- Hanging Wardrobe Compartments
- Drawers fitted underneath the Bed
- Air Conditioning
- Crew Head with Techma Toilet

- Shower with Waterproof Curtain

Engine Equipment

- (2) MTU 12V2000 M94 1920 HP Engines
- Access to Engine Room through Watertight Door
- Dual Air Intakes with De-Misters
- Dual Emergency Crash Valves
- Dual Electric Bilge Pumps
- FM-200 Fireboy Firefighting System with Automatic and Manual Control
- Fresh Water Hose Bib
- Fuel Tank Sight Gauge
- Fiberglass Fuel Tank with Inspection Port
- Dual Racer Fuel Filters for each Engine
- Soundproof watertight Forward Bulkhead
- Pirelli Flooring with Non-Slip Surface
- Twin Onan Generators
- Dual Watermakers/Spot Zero Spotless Water System Overhead Rod Storage
- Anti Roll Gyros
- Electric Steering
- Hydraulic 40hp Bow Thruster
- Dripless Shaft Seals
- Underwater Silenced Exhaust
- Chilled Water Air Conditioning
- Trim Tabs
- Separate Battery Chargers for Main Engine and House Services
- Generator Battery Chargers
- Cathodic Protection with Zinc Anodes
- Glendinning 100 amp Shorepower Cable Master
- Inverter for Refrigerator
- Electric Engine Room Mounted Bilge Pump with Remote Bilge Suction Pipe to every area of the Bilge
- Multi-Purpose Backup Electric Pump for Bilge, Grey Water, or Black Water
- Automatic electric pump for Grey Water Discharge
- 330 liter Black Water Tank with Electric Pump or Deck Pumpout
- 110V Fresh Water Pump
- 24V Fresh Water Pump
- Waterheater

Exclusions

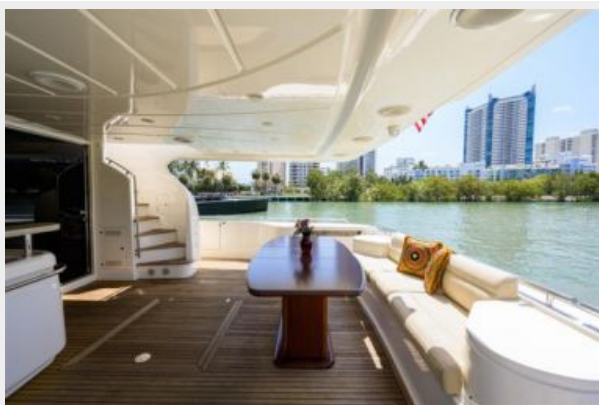
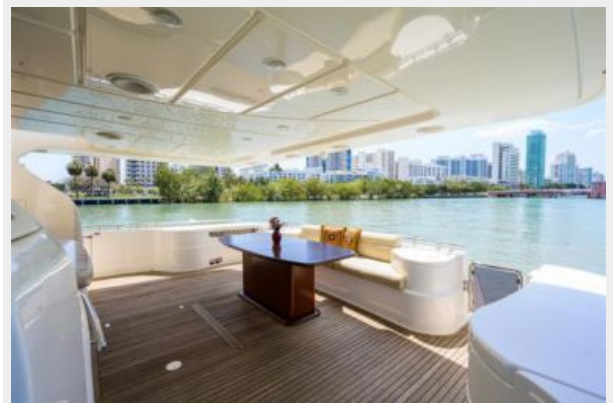
Owner's personal belongings.

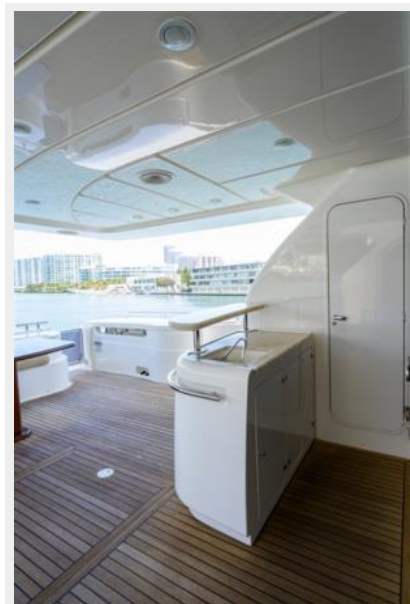
Disclaimer

The Company offers the details of this vessel or yacht in good faith but cannot guarantee or warrant the accuracy of this information nor warrant the condition of the vessel. A buyer should instruct his representatives, agents, or his surveyors, to investigate such details as the buyer desires validated. This vessel or yacht is offered subject to prior sale, price change, or withdrawal without notice.

PHOTOS















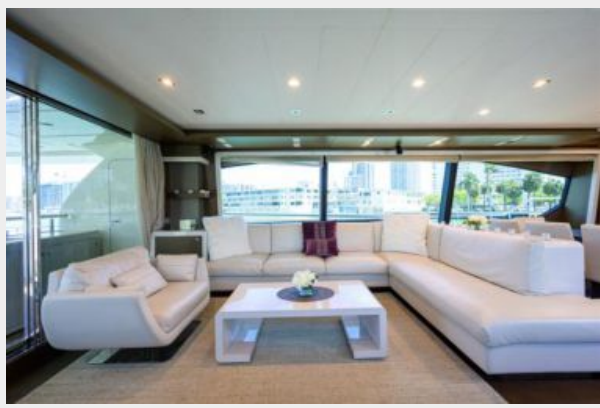


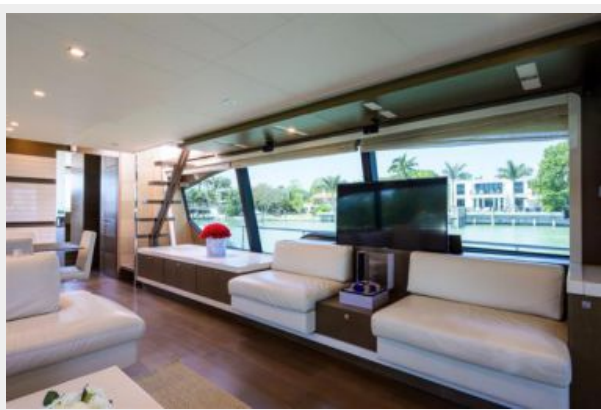


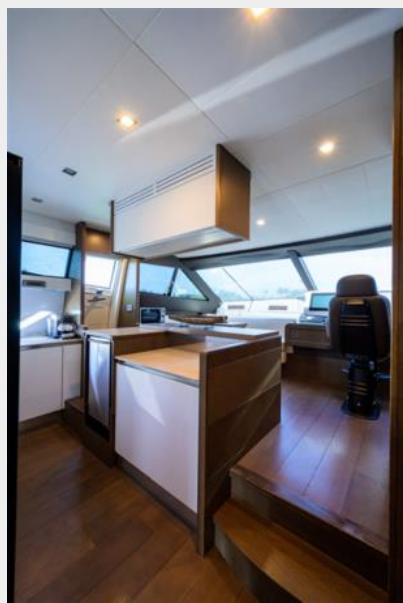
87_ferretti_salon



87_ferretti_salon

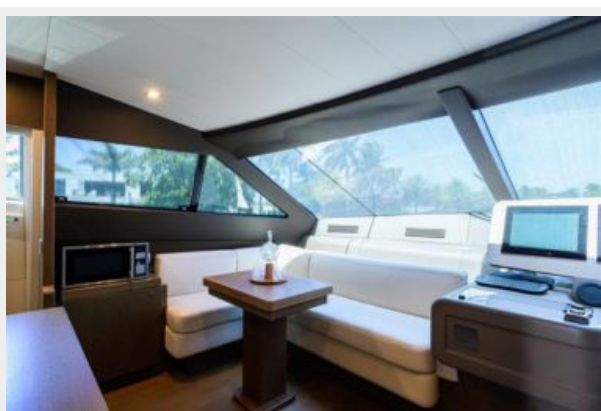




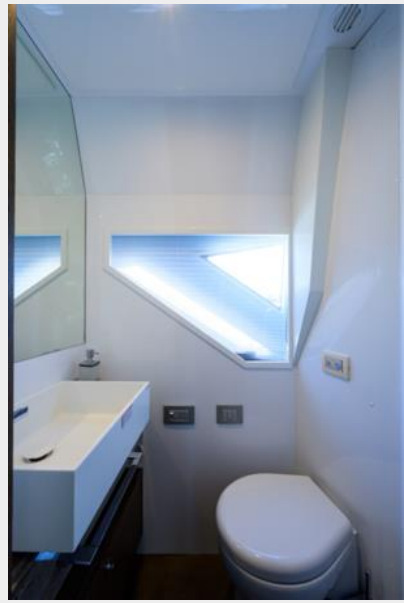








87_ferretti Dayhead



87_ferretti Head



87 Ferretti - Master Stateroom





87 Ferretti - Master Head



87 Ferretti - Master Head

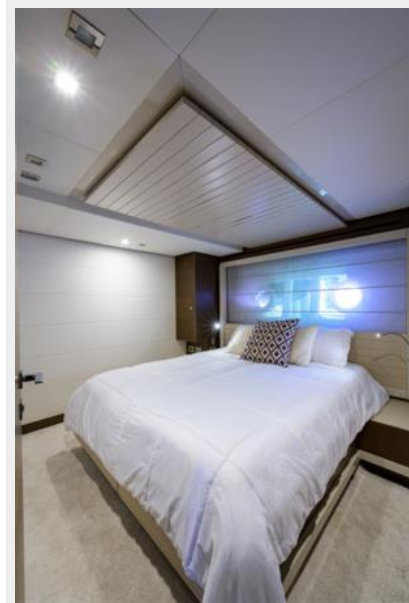








87_ferretti_port_guest_stateroom



87_ferretti_port_guest stateroom



87_ferretti port_guest stateroom



87_ferretti_starboard_guest_head



87_ferretti_starboard_guest_head



87_ferretti_starboard_guest_stateroom

87_ferretti_starboard_guest_stateroom



87_ferretti_starboard_guest_stateroom



87_ferretti_starboard_guest stateroom



87_ferretti crew



87_ferretti crew



87_ferretti crew



87_Ferretti Crew

87 Ferretti_Crew



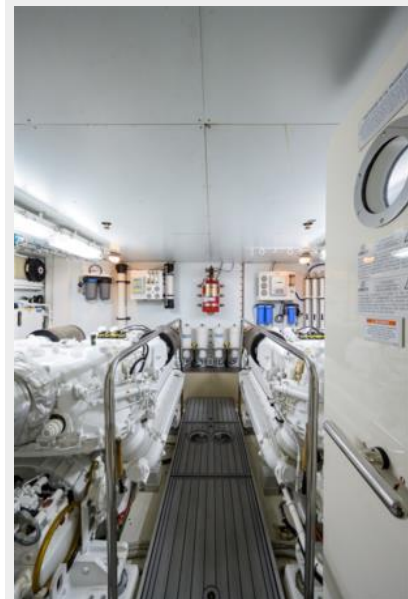
87_ferretti crew



87_ferretti crew



87_ferretti crew head







87_ferretti_engine_room_

87_ferretti_mechanical_room



87_ferretti_mechanical_room



87_ferretti_mechanical_room



87_ferretti_mechanical_room



87_ferretti_mechanical_room



CONTACTS

Andrey Shestakov, leading yacht broker of the sales department of Shestakov Yacht Sales Inc. Shestakov Yacht Sales Inc., the official representative of the Miami/Fort Lauderdale FL headquarters.

Contact details

Email: andrey@shestakovyachtsales.com

Web: shestakovyachtsales.com/en/

Telephones

USA: +1(954)274-4435

Office hours

Monday – Saturday: **9:00 - 21:00** EDT

Sunday: **closed**

Address



Harbour Towne Marina, 850 NE 3rd St,
STE 213, Dania, FL 33004