

## 870 FLYBRIDGE — FERRETTI YACHTS



**Судостроитель:** [FERRETTI YACHTS](#)

**Год постройки:** 2013

**Модель:** Моторная яхта

**Цена:** **ЦЕНА ЯХТЫ ПО ЗАПРОСУ**

**Местонахождение:** United States

**Длина общая:** 87' 0" (26.52m)

**Ширина:** 20' 6" (6.25m)

**Мин. осадка:** 6' 3" (1.91m)

**Макс. осадка:** 6' 5" (1.96m)

**Крейс. скорость:** 24 Kts. (28 MPH)

**Макс. скорость:** 31 Kts. (36 MPH)

Купить 870 Flybridge — FERRETTI YACHTS а также выбрать подходящую вам яхту из нашего каталога яхт вам поможет опытный яхтенный брокер Андрей Шестаков. На сегодняшний день компания Shestakov Yacht Sales Inc. имеет большое количество яхт в собственном списке продаж, а также тесно сотрудничает со всеми крупными яхтенными производителями по всему миру.

Для того чтобы купить яхту 870 Flybridge — FERRETTI YACHTS а также проконсультироваться по любому вопросу связанному с покупкой, продажей, чартером яхт позвоните по телефону **+7(918)465-66-44**.

# ОГЛАВЛЕНИЕ

ОГЛАВЛЕНИЕ	2
ХАРАКТЕРИСТИКИ	5
Обзор	5
Основная информация	5
Размеры	5
Скорость, вместимость и масса	6
Размещение	6
Корпус и палуба	6
Информация о двигателе	6
ПОДРОБНОЕ ОПИСАНИЕ	7
Vessel Walkthrough	7
Main Salon	8
Galley	9
Master Stateroom	9
VIP Stateroom	9
Port Guest Stateroom	10
Starboard Guest Stateroom- Twin Berths	10
Flybridge	11
Wheelhouse Equipment	11
Deck Equipment	12
Crew Quarters	12
Engine Equipment	13
Исключения	13
Отказ от ответственности	14
ФОТОГРАФИИ	15
87_ferretti_salon	23
87_ferretti_salon	23
87_ferretti Dayhead	29



---

Телефоны	43
Время работы	43
Адрес	43

# ХАРАКТЕРИСТИКИ

## Обзор

2013 Ferretti 870

Highlights

- US Spec'ed
- Aft Garage (Beach Club)
- Flybridge Jacuzzi
- 4/4 Layout + Dayhead
- Upper & Lower Helm
- (2) Watermakers
- Spot Zero
- FLIR
- KVH SAT
- Flybridge Davit

## Основная информация

**Тип судна:** Моторная яхта

**Модельный год:** 2013

**Год постройки:** 2013

**Страна:** United States

**Открытая палуба мостика:** Да

## Размеры

**Длина общая:** 87' 0" (26.52m)

**Ширина:** 20' 6" (6.25m)

**Мин. осадка:** 6' 3" (1.91m)

**Макс. осадка:** 6' 5" (1.96m)

## Скорость, вместимость и масса

---

**Крейс. скорость:** 24 Kts. (28 MPH)

**Макс. скорость:** 31 Kts. (36 MPH)

**Водоизмещение:** 308000000 Pounds

**Вместимость воды:** 349 Gallons

**Объем топливного бака:** 1955 Gallons

## Размещение

---

**Всего кают:** 4

**Всего ком. состава:** 5

## Корпус и палуба

---

**Материал корпуса:** Fiberglass

## Информация о двигателе

---

**Двигатели:** 2

**Производитель:** MTU

**Модель:** V12 2000 M94

**Тип двигателя:** Inboard

**Тип топлива:** Diesel

---

# ПОДРОБНОЕ ОПИСАНИЕ

---

## Vessel Walkthrough

---

### 2013 Ferretti 870

#### Highlights

- 1000Hrs on the MTU's
- US Spec'ed
- Aft Garage (Beach Club)
- Flybridge Jacuzzi
- 4/4 Layout + Dayhead
- Upper & Lower Helm
- (2) Watermakers
- Spot Zero
- FLIR
- KVH SAT
- Flybridge Davit
- Country Kitchen
- 4 staterooms/ 4 bathrooms + added day head on main deck
- Full Beam Master Stateroom with Large Windows
- Spacious Flybridge with Hardtop and Sunroof, Jacuzzi, Ample amount of Seating and Cocktail Bar.

A stylish Italian flybridge yacht that is sleek and speedy with large volumes and has been well maintained since her launch. Welcoming eight guests in four spacious cabins, she has a timeless and modern decor featuring dark woods and cream soft furnishings.

Able to host eight guests in four cabins, this vessel's timelessly modern decor delivers a welcoming environment from the moment guests step onboard. The inviting main salon is home to expansive white leather sofas, an entertainment system, and a full dining table in easy reach of the modern galley. Dark wood floors paired with soft furnishings with a light palette invoke a stylish setting, with natural light filling the salon. A TV and plenty of additional seating ensure the

whole family can enjoy the main salon altogether. This is the social hub for all guests to gather and relax in luxurious comfort.

All guest cabins are located on the lower deck, including the full-beam king master. This impressive cabin mirrors the stylish decor of white leathers and dark woods found in the main salon, with features including the large shower and his and hers sinks. An ensuite VIP suite is positioned forward, with two further twin cabins, one of which can be converted to a King for accommodation versatility. All staterooms boast luxurious finishes standard with all Ferretti-built yachts.

Outdoor spaces are impressive, with plenty of different hubs to choose from. The forward main deck is home to large sun pads, and the main aft deck is a shaded haven with a dining table and full cocktail bar – the ultimate space to entertain. The flybridge has many features include a large seating setup, with u-shaped seating and a dinette, television, and sun pads, not forgetting an inviting Jacuzzi. An all-weather television is perfect for outdoor movie sessions or for watching the latest sports game in style. Optional shading means the flybridge can be adapted to suit all weather conditions. The flybridge aft houses the inflatable tender and crane for easy removable once you arrive at your next anchorage and can easily accommodate a few sun loungers.

Powered by twin MTU 12V2000 M94 1920HP engines, she cruises at 24 Knots, reaching exciting speeds of 31 knots. A modern wheelhouse is complemented by a steering station on the flybridge. There is storage for plenty of tenders and toys and easy access to the ocean via the swimming platform.

Delivering generous volumes and stylish Italian design, this 87' 2013 Ferretti High-Performance Yacht is a stylish haven on the sea.

## Main Salon

---

- (2) Sofas
- Arm Chair and Coffee Table
- Bose System
- Isotherm Pull Out Cooler Drawer just inside Salon Door
- Aft Tempered Glass Sliding Door with Stainless Steel Frames
- Air Conditioning
  
- (2) Bookshelves
- Fitted Wood Floor with Soundproof Underlining
- High Fi Bose AV System
- Popup 42" LCD TV with Electric Lift
- Dining Room Table
- Stemware & Dishware Services for 12
- Day Head



---

## Galley

---

- GE Profile Side-by-side refrigerator
- Bosch 5 Burner Induction Cooktop
- Miele Oven
- Lisa Stainless Steel Sink with Braun Sink Fixture
- Ernestomeda Exhaust Fan
- Fusion Stereo for Chef in Galley
- Miele Dish Washer
- Scottmann CU 50 Clear Ice, icemaker

---

## Master Stateroom

---

- King Custom handcrafted Mattress with Pillowtop
- Starboard side Sette with Sliding Breakfast Table
- Large Hullside Picture Window with Dual Opening News Port Lights for Natural Ventilation
- 35" Samsung Flatscreen TV
- Portside Makeup Table with Seat for flanked by four Pull Out Drawers
- Bose System
- Walk-In Wardrobe with Hanging Rail Mirror Closet & Shelf
- Safe
- Under Bed Drawer Storage
- Additional Hanging Locker
- Mirrored Headboard
- Overhead Detail
- Fabrica Carpet
- Ensuite Head with Dual White Basin Sinks over a Natural Stone Backsplash and Counter Top
- (3) Mirrored Medicine Cabinets
- Full Natural Stone Shower with Natural Stone Floor and Seamless Drains
- Overhead Rainforest Shower
- Handheld Wand Shower
- Custom Todo Head with Auto Lift, Bidet, and Warming Seat
- Opening News Port Light in Head
- Opaque Sliding Door to closer off Toilet Room
- Natural Ventilation under Bed

---

## VIP Stateroom

---

- Queen Bed

- Overhead Escape Hatch w/Blackout
- Large Picture Windows
- Opening News Port Lights for Natural Ventilation
- Port & Starboard under Bed Cabinets
- Large Centerline pull out Drawer
- Walk-in Closet w/ Igloo Refrigerator & Floor to Ceiling Mirror
- Blackout Shades and Sheer Roman Shades
- PortSide Makeup Table
- Stitched Leather Inlays
- Fusion MS-AV 600 DVD Player with iPod Dock and Remote
- Direct TV HD DVR
- 32' Vizio TV
- Ensuite Head with Flushfill Wood Floors
- Natural Stone Backsplashes and Counter Tops with Helena Basin Sink
- Helena Wand Shower Fixtures
- Seamless Floor Drains
- Techma Elongated Head
- Planit Towel Bar
- Natural Ventilation under Bed

---

## Port Guest Stateroom

---

- Twin Beds which can be slid together to form a Full Second VIP Stateroom
- Large Hullside Picture Window with dual News Opening Hullside Windows for Ventilation
- Overhead detailing
- Samsung 38" LCD Flatscreen TV
- Foldout Makeup Table below TV with Mirror
- Natural Stone Counter Tops and Backsplashes with White Basin Sink and Helena Fixtures
- Fore and Aft LED reading lights
- FireSafety Smoke Detector
- Large Hanging Locker Fore and Aft of Bed
- (2) Large Pullout Drawers
- Flushfill Wood Floor with Seamless Drain in Shower
- Stitched Patrone Frau Leather Surfaces
- Natural Ventilation under Bed

---

## Starboard Guest Stateroom- Twin Berths

---

- Side by Side Twin Beds with Drawer Storage underneath
- 25" LCD TV
- LED Reading Lights
- Large Hullside Windows with Dual Opening News Port Lights

- Smoke Detector
- LED Lighting Ensuite Head
- Sheer Roman with Blackout Shade
- Natural Ventilation under Bed

## Flybridge

---

- Access from the Cockpit through Teak Covered GRP Steps with Stainless Steel Handrail
- Access from forward Salon via Wooden Stairs through Aluminum & Lexan Hatch
- TV
- Detachable and directable spotlight
- Dining Area with Large Table
- Overhead Hardtop with opening Sunroof Liferrafts for 16 People
- Fully optioned Wet Bar with Sink and Custom Clear ice Scottsman icemaker & Dual Gaggenau Electric Grill Plexiglass & Stainless Air Deflectors
- Sunlounge Pad to Starboard of Helm with Sunbathing Cushions
- Ample DC Gold Speakers tied to Fusion Stereo with WIFI & Bluetooth Interfaces

## Wheelhouse Equipment

---

- (2) MTU V12 2000 M94 1920 HP Engines
- FLIR
- Bose System
- Apple TV
- (2) Direct TV Receivers
- KVH Trackvision
- Minuteman Pro 1000RT Power Supply
- iPad Mini RTI Remote
- Global Star Phone Receiver
- Furuno HS4721 VHF w/ DSC
- Furuno FM4721 VHF Mic
- Furuno Nav Net 30 W BB Radar & BB Sounder
- Engine Room Cameras
- American Bow Thruster
- Dual Searchlights
- Twin Mitsubishi Heavy Industries Anti! Roll Gyro Stabilizers
- Quick Chain Counter for Windlass
- ZF Electronic Controls
- Furuno Nav Pilot Furuno
- RD-33
- (2) Master LCD Monitors M17-41

---

## Deck Equipment

---

- (2) Aft and (3) Bow Roller Fair Leads
- Access to Aft Platform through GRP and Teak Steps with Stainless Steel Handrail and SS and Plexiglass Plates
- (2) GRP Boarding Gates with Breakable Handrails
- (2) SS Bow Hawses Pipes
- (2) Bruce Style Anchors with ample Chain
- (2) 2700 Watt Electric Anchor Windlasses with controls at Bow Main Helm Position and Flybridge Helm Position
- Electrohydraulic Garage Door laid in Teak which folds out into Transom Beach Club
- (2) Concealed Foot Controlled Electric Windlasses in Aft Mooring Stations
- Wet Bar on the Portside of the Cockpit with Sink, Handheld Shower with Hot & Cold Shower on Aft Platform
- Icemaker in the Cockpit
- Indirect Lighting under Toekick surrounding the Side Decks
- Exterior Mesh Protective Window shades
- Pull Handles for Engine and Generator Shutdown and activation of Fire Extinguishing System
- Seawater Fire Fighting Hose
- Side Exit Door from Galley to Walkaround Deck
- Stern Bend Seat with 3-Seat Sofa (in the process of conversion to Sun Pad)
- Teak Aft Platform with Electrohydraulic Foldaway Bathing Ladder
- Sunlounge Pad at Bow with Custom Headrest and Sunbathing Cushions
- Custom Speakers in Bow Bulwarks
- Telescopic Stainless Steel Gangway with Electro-Hydraulic Movement, Remote Control, and Automatic Stanchion
- Overhead DC Gold Stereo Speakers

---

## Crew Quarters

---

- Access from Aft Deck down stairwell
- Washer/Dryer
- Living Area with dual small Sofas and Table
- (2) Staterooms
- (1) Stacked Bunks
- (1) Captains Cabin
- Each Cabin has a Opening Porthole
  
- Hanging Wardrobe Compartments
- Drawers fitted underneath the Bed
- Air Conditioning
- Crew Head with Techma Toilet

- Shower with Waterproof Curtain

## Engine Equipment

---

- (2) MTU 12V2000 M94 1920 HP Engines
- Access to Engine Room through Watertight Door
- Dual Air Intakes with De-Misters
- Dual Emergency Crash Valves
- Dual Electric Bilge Pumps
- FM-200 Fireboy Firefighting System with Automatic and Manual Control
- Fresh Water Hose Bib
- Fuel Tank Sight Gauge
- Fiberglass Fuel Tank with Inspection Port
- Dual Racer Fuel Filters for each Engine
- Soundproof watertight Forward Bulkhead
- Pirelli Flooring with Non-Slip Surface
- Twin Onan Generators
- Dual Watermakers/Spot Zero Spotless Water System Overhead Rod Storage
- Anti Roll Gyros
- Electric Steering
- Hydraulic 40hp Bow Thruster
- Dripless Shaft Seals
- Underwater Silenced Exhaust
- Chilled Water Air Conditioning
- Trim Tabs
- Separate Battery Chargers for Main Engine and House Services
- Generator Battery Chargers
- Cathodic Protection with Zinc Anodes
- Glendinning 100 amp Shorepower Cable Master
- Inverter for Refrigerator
- Electric Engine Room Mounted Bilge Pump with Remote Bilge Suction Pipe to every area of the Bilge
- Multi-Purpose Backup Electric Pump for Bilge, Grey Water, or Black Water
- Automatic electric pump for Grey Water Discharge
- 330 liter Black Water Tank with Electric Pump or Deck Pumpout
- 110V Fresh Water Pump
- 24V Fresh Water Pump
- Waterheater

## Исключения

---

При продаже яхты исключаются личные вещи владельца.

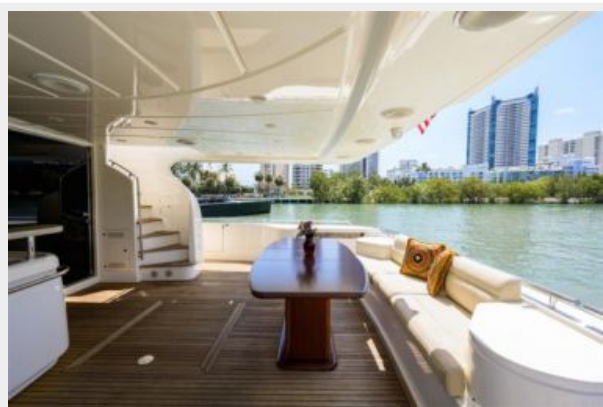
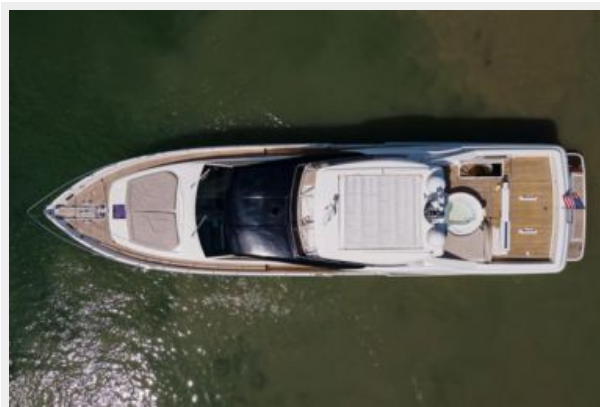
## Отказ от ответственности

---

Компания предоставляет описание судна или яхты добросовестно, но не может гарантировать точность этой информации, а также не ручается за техническое состояние. Покупатель должен проинструктировать своих агентов или оценщиков исследовать представленную информацию более подробно, по собственному желанию. Продажа судна или яхты, изменение цены или снятие с продажи будет происходить без предварительного уведомления.

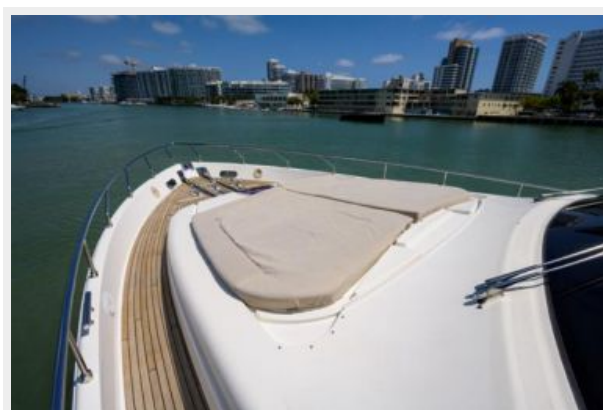
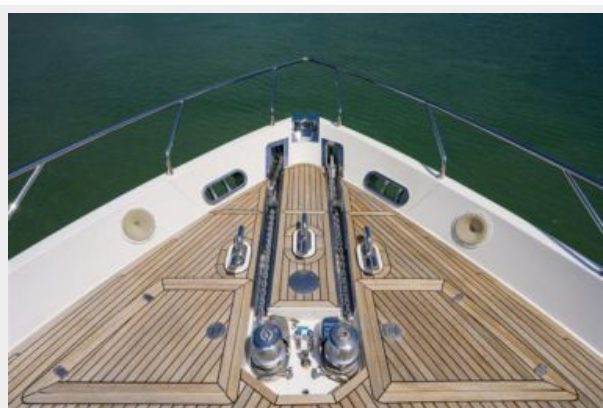
# ФОТОГРАФИИ

















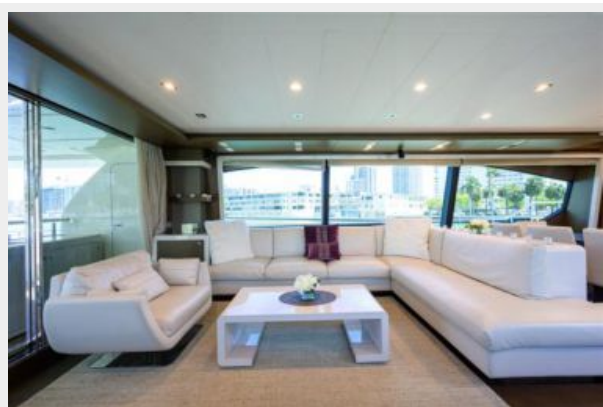


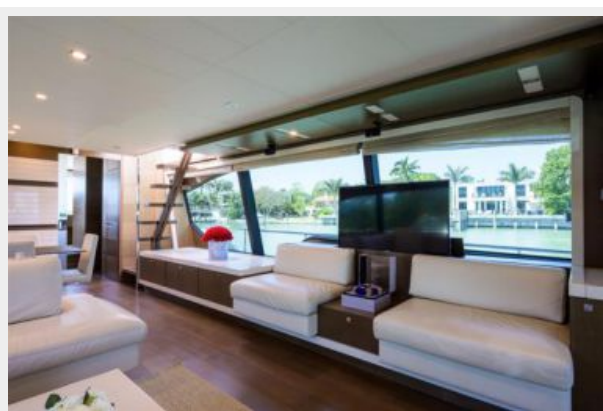


87\_ferretti\_salon

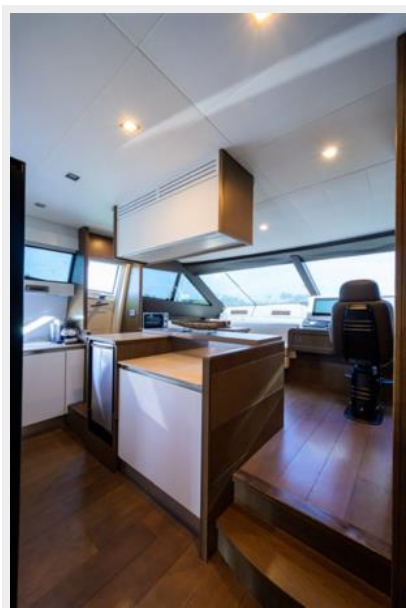


87\_ferretti\_salon



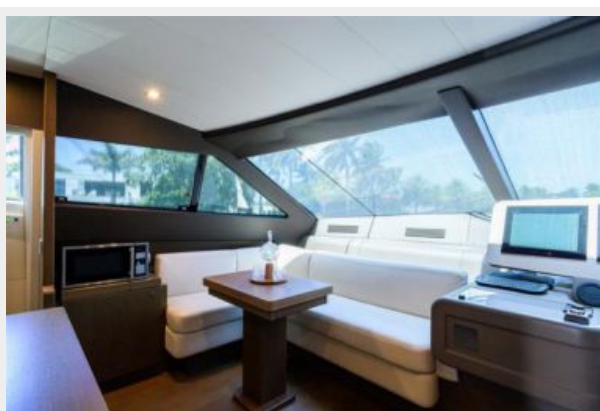
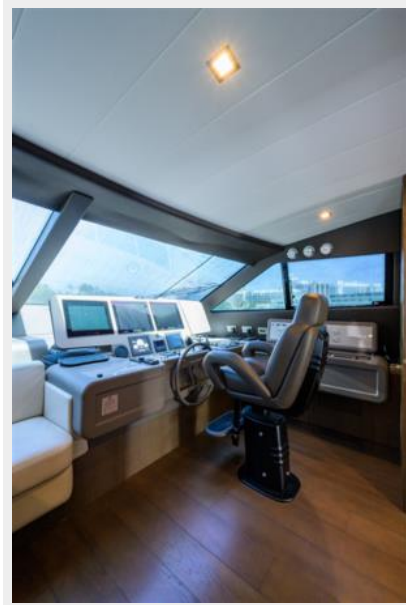




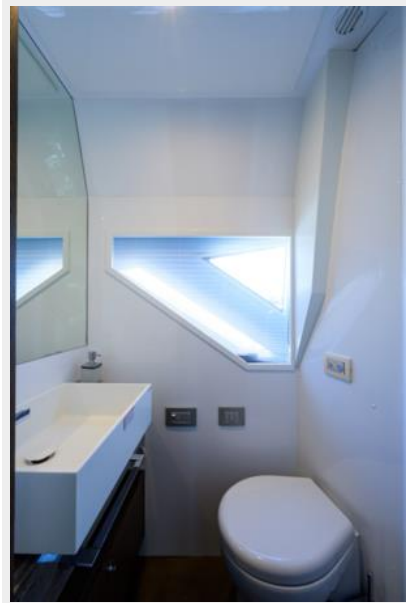








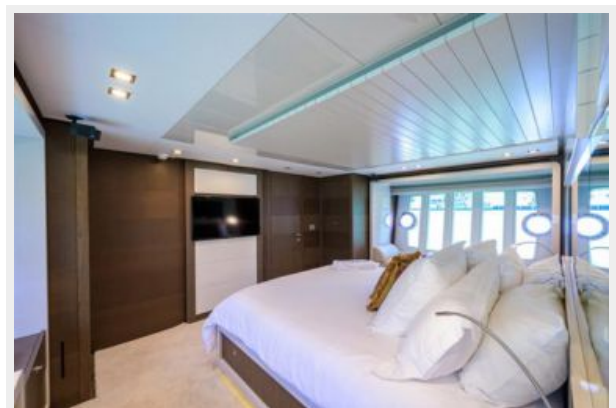
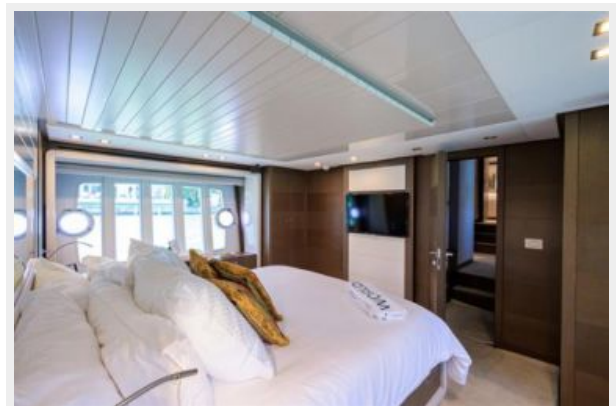
87\_ferretti Dayhead



87\_ferretti Head



87 Ferretti - Master Stateroom





### 87 Ferretti - Master Head



### 87 Ferretti - Master Head











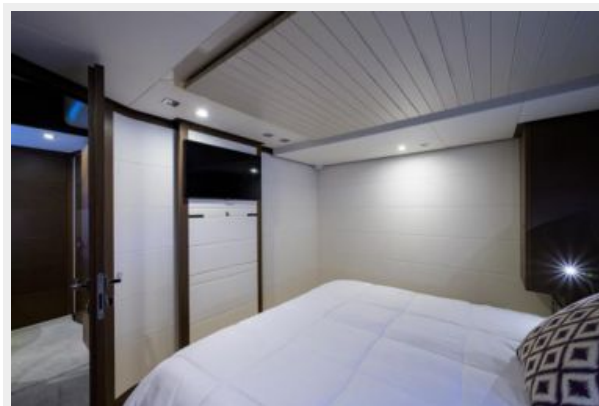
### 87\_ferretti\_port\_guest\_stateroom



87\_ferretti\_port\_guest stateroom



87\_ferretti port\_guest stateroom



87\_ferretti\_starboard\_guest\_head

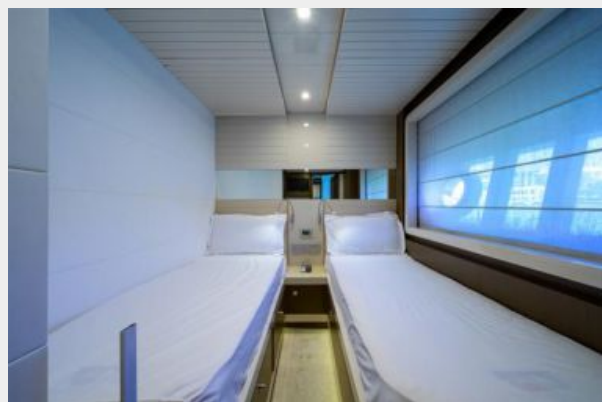


87\_ferretti\_starboard\_guest\_head



87\_ferretti\_starboard\_guest\_stateroom

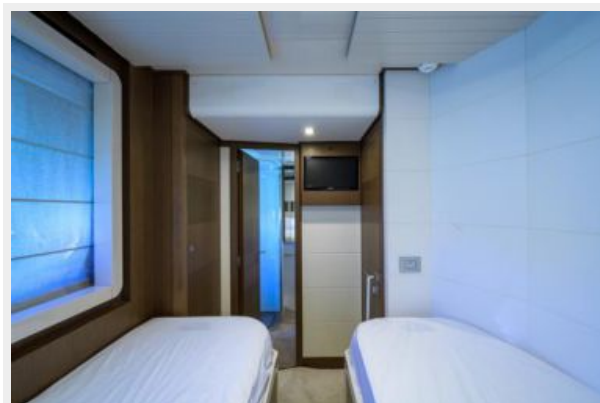
87\_ferretti\_starboard\_guest\_stateroom



### 87\_ferretti\_starboard\_guest\_stateroom



### 87\_ferretti\_starboard\_guest stateroom



### 87\_ferretti crew



87\_ferretti crew



87\_ferretti crew



87\_Ferretti Crew

87 Ferretti\_Crew



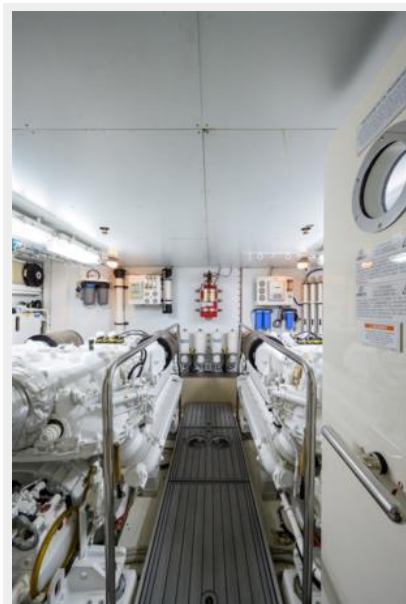
87\_ferretti crew

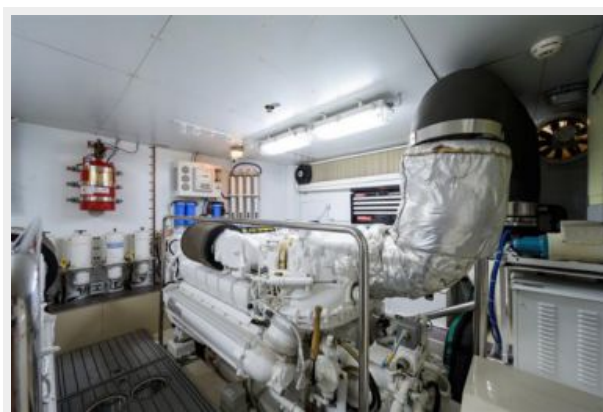
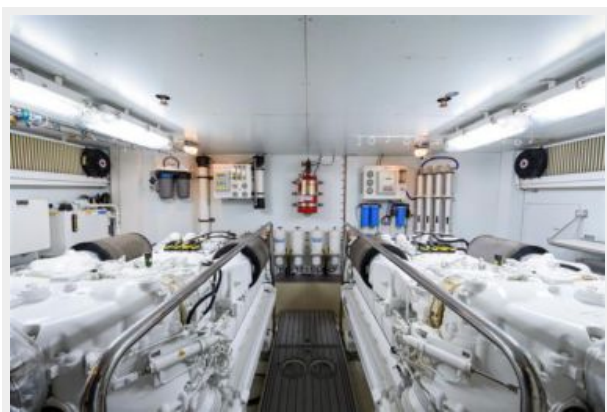


87\_ferretti crew

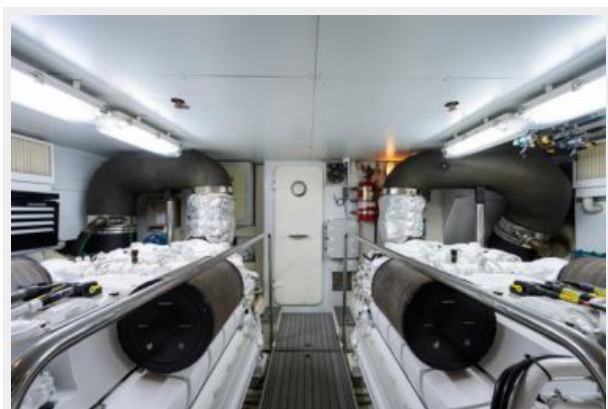


87\_ferretti crew head









87\_ferretti engine\_room\_

87\_ferretti\_mechanical\_room



87\_ferretti\_mechanical\_room



87\_ferretti\_mechanical\_room



87\_ferretti\_mechanical\_room



87\_ferretti\_mechanical\_room



# КОНТАКТЫ

---

Андрей Шестаков (Andrey Shestakov) – ведущий яхтенный брокер отдела продаж яхт и судов компании Shestakov Yacht Sales Inc. Официальный представитель Shestakov Yacht Sales Inc. для русскоговорящих клиентов в центральном офисе компании в Майами/Форт Лодердейл/Флорида/США.

## Контактная информация

---

Email: [andrey@shestakovyachtsales.com](mailto:andrey@shestakovyachtsales.com)

Web: [shestakovyachtsales.com](http://shestakovyachtsales.com)

## Телефоны

---

Краснодарский край: **+7(918)465-66-44**

США, Майами, Флорида: **+1(954)274-4435**

## Время работы

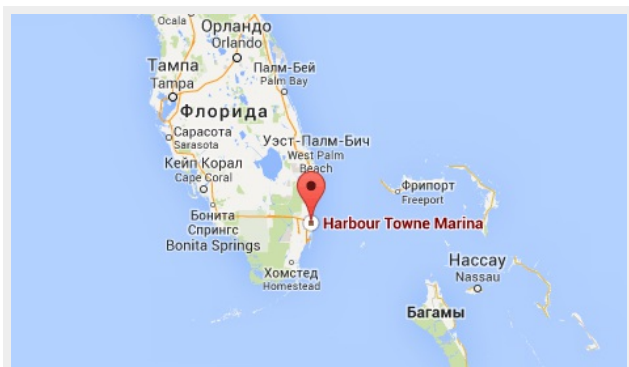
---

Понедельник – Суббота: **9:00 - 21:00**  
EDT

Воскресенье: **Закрето**

## Адрес

---



Harbour Towne Marina, 850 NE 3rd St,  
STE 213, Dania, FL 33004