

## SEVEN SEAS — OCEANCO



**Builder:** OCEANCO

**Year Built:** 2010

**Model:** Motor Yacht

**Price:** PRICE ON APPLICATION

**Location:** Mexico

**LOA:** 282' 3" (86.01m)

**Beam:** 46' 8" (14.20m)

**Max Draft:** 12' 10" (3.91m)

**Cruise Speed:** 16 Kts. (18 MPH)

**Max Speed:** 19.5 Kts. (22 MPH)

Our experienced yacht broker, Andrey Shestakov, will help you choose and buy a yacht that best suits your needs **SEVEN SEAS — OCEANCO** from our catalogue. Presently, at Shestakov Yacht Sales Inc., we have a wide variety of yachts available on our sale's list. We also work in close contact with all the big yacht manufacturers from all over the world.

If you would like to buy a yacht **SEVEN SEAS — OCEANCO** or would like help answering any questions concerning purchasing, selling or chartering a yacht, please call **+1(954)274-4435**

# TABLE OF CONTENTS

TABLE OF CONTENTS	2
SPECIFICATIONS	4
Overview	4
Basic Information	4
Dimensions	4
Speed, Capacities and Weight	5
Accommodations	5
Hull and Deck Information	5
Engine Information	5
DETAILED INFORMATION	6
Full Specification	6
Exclusions	18
Disclaimer	18
PHOTOS	19
004 UpperDeckSalon1	19
003 IMG_5314	19
005 UpperDeckSalon	19
006 UpperDeckSalon2	19
010 IMG_3957	20
012 cinema1	20
016 Master Bed	20
015 1stFILanding	20
0191 UpperDeckOwner Bath1	20
0272 FitnessEntry	20
023 Cabin3	21
024 Cabin1	21
029 IMG_2463	21
028 IMG_2503	21

032 IMG_2445	21
DJI_0011	21
0393 IMG_2189	22
0392 IMG_2115	22
044 Seven Seas GA Rev G 25.jan.21HR - Top Half	22
043 IMG_2378	22
045 Seven Seas GA Rev G 25.jan.21HR - Bottom Half	22
CONTACTS	23
Contact details	23
Telephones	23
Office hours	23
Address	23

# SPECIFICATIONS

## Overview

### KEY FEATURES

- Striking exterior design by Nuvolari & Lenard
- Timeless interior design by Nuvolari & Lenard and Molly Isaksen
- Versatile deck space and guest accommodation across five decks
- Professional cinema
- Fully equipped gym, massage room, sauna and steam room on bridge deck
- Large pool on the aft deck
- Two exterior Jacuzzis
- Consistently maintained to the highest standard

## Basic Information

Category: Motor Yacht	Sub Category: Displacement
Model Year: 2010	Year Built: 2010
Country: Mexico	Helipad: Yes

## Dimensions

LOA: 282' 3" (86.01m)	LWL: 246' 2" (75.01m)
Beam: 46' 8" (14.20m)	Max Draft: 12' 10" (3.91m)

---

## Speed, Capacities and Weight

---

**Cruise Speed:** 16 Kts. (18 MPH)

**Cruise Speed Range:** 5200

**Max Speed:** 19.5 Kts. (22 MPH)

**Gross Tonnage:** 2658 Pounds

**Water Capacity:** 45305.506918 Gallons

**Fuel Capacity:** 77138.239184 Gallons

**Fuel Consumption:** 5019.268988 Gallons

---

## Accommodations

---

**Total Cabins:** 9

**Sleeps:** 20

**Captain Cabin:** True

**Crew Sleeps:** 28

---

## Hull and Deck Information

---

**Hull Material:** Steel

**Deck Material:** Teak

**Hull Designer:** Azure Naval Architects

**Exterior Designer:** Nuvolari & Lenard

**Interior Designer:** Nuvolari & Lenard / Molly Isaksen

---

## Engine Information

---

**Engines:** 2

**Manufacturer:** MTU

**Model:** 16V595 TE70

**Fuel Type:** Diesel

# DETAILED INFORMATION

## Full Specification

### 1. MAIN CHARACTERISTICS

<b>TYPE</b>	◦ Displacement Motor Yacht
<b>HULL NO.</b>	◦ Y706
<b>BUILDER</b>	◦ Oceanco, The Netherlands
<b>OWNER'S REP BUILD</b>	◦ Wright Maritime Group
<b>NAVAL ARCHITECT</b>	◦ Azure Naval Architects
<b>EXTERIOR DESIGN</b>	◦ Nuvolari & Lenard
<b>INTERIOR DESIGN</b>	◦ Nuvolari & Lenard / Molly Isaksen
<b>YEAR</b>	◦ 2010
<b>CLASSIFICATION</b>	◦ Lloyds Register + 100 A1 SSC Yacht (P) Mono G6 + LMC UMS MCA
<b>CONSTRUCTION</b>	◦ Steel Hull, Aluminium superstructure, Teak Deck 20mm
<b>FLAG</b>	◦ Cayman Islands
<b>ENGINES</b>	◦ 2 x 4,680 Hp / 3,492 kW MTU 16V595 TE70 Diesel
<b>GT</b>	◦ 2,658
<b>NT</b>	◦ 797
<b>HULL COLOUR</b>	◦ Flag Blue

### 2. DIMENSIONS

<b>LOA</b>	◦ 86.01m / 282'2"
<b>LWL</b>	◦ 75.01m / 246'
<b>BEAM</b>	◦ 14.20m / 46'7"
<b>DRAFT</b>	◦ 3.91m / 12'10"

### 3. SPEED & RANGE UNDER POWER

<b>MAXIMUM SPEED</b>	◦ 19.5 knots
<b>CRUISING SPEED</b>	◦ 16 knots
<b>ECONOMICAL SPEED</b>	◦ 15 knots
<b>RANGE</b>	◦ 5,200 @ 15 knots
<b>FUEL CONSUMPTION</b>	◦ 19,000 litres / day incl. gen @ eco speed

### 4. CAPACITIES

<b>GUESTS</b>	◦ 20 x Guests in 7 + 2 cabins (maximum capacity in private use)
	◦ 15 x Guests in 7 cabins (standard configuration)
	◦ 12 x Guests in 7 cabins (commercial use)

<b>CREW</b>	◦ Up to 28 x Crew including the captain:
	◦ 1 x 3-Berth cabin (3)
	◦ 2 x 1-Berth cabins (2)
	◦ 11 x 2-Berth cabins (22)
	◦ 1 x 1-Berth Captain's cabin (1) with single pullman
<b>FUEL</b>	◦ 292,000 litres / 77,138 US gallons
<b>FRESH WATER</b>	◦ 171,500 litres / 45,306 US gallons
<b>LUBE OIL</b>	◦ 3,800 litres / 1,004 US gallons (Main Engine)
	◦ 11,200 litres / 2,959 US gallons (Gear Boxes)
<b>DIRTY OIL</b>	◦ 3,800 litres / 1,004 US gallons
<b>GREY WATER</b>	◦ 24,700 litres / 6,525 US gallons
<b>BLACK WATER</b>	◦ 14,700 litres / 3,883 US gallons
<b>BILGE WATER</b>	◦ 6,200 litres / 1,637 US gallons
<b>SLUDGE</b>	◦ 5,900 litres / 1,558 US gallons

## 5. ACCOMMODATION

### ◦ OWNER & GUESTS

- Standard configuration accommodates 15 in 7 guest cabins (can berth additional guests up to a total 20 in a maximum number of 9 guest cabins)
- 1 x Owner's Suite on Owner's Deck with separate dressing room, bathroom and private outside deck with Jacuzzi pool (2)
- 1 x Owner's Office on Owner's Deck with separate sitting room and en suite facilities converts to an additional guest cabin (2)
- 1 x Full beam VIP Cabin on Main Deck with dressing room and 2 x bathrooms that can be converted in 2 separate guest cabins (4)
- 4 x Guest Cabins on Main Deck (3 x double, 1 x double + single) (9)
- 1 x Sea Cabin on Lower Deck (1 x double, 1 x Pullman) (3)

### ◦ MAIN DECK

- The main deck holds four guest cabins and a full beam VIP cabin. Aft of the central lobby which includes the guest staircase and elevator is the main deck saloon which has a large seating configuration and bar.
- The primary set-up is a cinema room. The main deck aft has a large pool deck with a shaded dining and bar area comfortably seating 14 guests at any given time. The pool is 6.4m by 3.6m and is flush with the deck. The bottom of the pool can be raised to deck level. On port and starboard generous stairs lead down to the large swim platform.

### ◦ OWNER'S DECK

- The Master suite is located on the Owner's deck and includes a large en-suite bathroom and dressing room, a private office and entrance lobby. In addition, the Owner's exterior foredeck hosts a Jacuzzi pool, sunbathing and a flush foredeck. The aft saloon area is full beam and contains multiple seating arrangements, a large television and bar (with Guinness on draft). A large circular dining table seats 14 in its standard configuration with sliding doors

opening to the aft deck which contains a bar and an aft-oriented seating arrangement.

◦ **BRIDGE DECK**

- The bridge deck features a gym and spa including a sauna, steam room and massage room. A Jacuzzi and sun loungers can found on the aft deck.

◦ **LOWER DECK**

- The lower deck holds a Sea cabin with en-suite facilities and a fold down balcony for water level tender access to the central lobby adjacent to the cabin.

## 6. MECHANICAL EQUIPMENT

<b>ENGINES</b>	<ul style="list-style-type: none"> <li>◦ 2 x MTU 16V595 TE70 Diesel</li> <li>◦ 2 x 4,680Hp / 3,492kW</li> </ul>
<b>ENGINE HOURS</b>	<ul style="list-style-type: none"> <li>◦ November 2020</li> <li>◦ Port: 11,603 / Stbd: 11,604 hours</li> </ul>
<b>EXHAUST SYSTEM</b>	<ul style="list-style-type: none"> <li>◦ Marquip supercharging 2-stage MTU sequential turbo charging system</li> </ul>
<b>SHAFTS</b>	<ul style="list-style-type: none"> <li>◦ Rubber Design RD-250-OL.S.TL.C</li> </ul>
<b>PROPELLERS</b>	<ul style="list-style-type: none"> <li>◦ 2 x Wärtsila 5-blades each rotating inboard,</li> <li>◦ manufactured to ISO 484/2 Class 1</li> </ul>
<b>GEARBOX</b>	<ul style="list-style-type: none"> <li>◦ Reintjes WAF 2355 - reduction 5.454 : 1</li> </ul>
<b>STEERING SYSTEM</b>	<ul style="list-style-type: none"> <li>◦ Rolls Royce Marine AS Tenfjord, SR 622-FCP</li> <li>◦ Electro-hydraulic</li> </ul>
<b>STABILISERS</b>	<ul style="list-style-type: none"> <li>◦ 2 x Retractable Rolls Royce Aquarius 100 SAR Series zero-speed fin</li> </ul>
<b>BOW THRUSTER</b>	<ul style="list-style-type: none"> <li>◦ 300 kW Jastram type BU50F, electric, w / 5-blad fixed pitch</li> </ul>
<b>STERN THRUSTER</b>	<ul style="list-style-type: none"> <li>◦ Veth VL 200 - 250 kW retractable, rotatable</li> <li>◦ with 5-bladed marine bronze NiAl fixed</li> <li>◦ pitch in nozzle propeller</li> </ul>
<b>ELECTRICITY</b>	<ul style="list-style-type: none"> <li>◦ 3-Phase, 4- wire system, 400 / 230V, 50Hz</li> <li>◦ 230V, 50Hz (lighting + emergency lighting)</li> <li>◦ small galley equip. sockets nav equipment</li> <li>◦ 400V, 50Hz, 10kW for electric doors 24V DC</li> <li>◦ (Alarm, nav &amp; radio equipment, light)</li> <li>◦ 3 x 332kW /386 kVA Stamford HCM 534 FZ</li> </ul>
<b>GENERATORS &amp; ALTERNATOR</b>	<ul style="list-style-type: none"> <li>◦ 2 x MTU 8V 2000 M50A – 308kW</li> <li>◦ 2 x Stamford HC.M534F2 – 385kVA</li> <li>◦ 1 x 12V 2000 M50A – 465kW</li> <li>◦ 1 x Stamford HC.M634J2 – 765kVA</li> <li>◦ All generator exhausts have HUG engineering particulate filters</li> </ul>
<b>EMERGENCY GENERATOR</b>	<ul style="list-style-type: none"> <li>◦ 1 x 120kW / 125kVA Newage Stamford UCM 274 F13</li> <li>◦ Engine: 120kW / 150kVA Volvo Penta D7A TA Diesel</li> </ul>

<b>GENERATOR HOURS</b>	<ul style="list-style-type: none"> <li>◦ November 2020</li> <li>◦ Port: 32,309 / Centre: 32,234 / Stbd: 42,195 hours</li> <li>◦ 1 x Main UPS-GE SitePro S8</li> </ul>
<b>BATTERY BANKS</b>	<ul style="list-style-type: none"> <li>◦ 1 x GMDSS batteries</li> <li>◦ 1 x 24V General service</li> <li>◦ 3 x Generator starter</li> <li>◦ 2 x 24V, Emergency generator starter</li> </ul>
<b>BATTERY CHARGERS</b>	<ul style="list-style-type: none"> <li>◦ 1 x GMDSS charger</li> <li>◦ 1 x General service charger</li> <li>◦ 1 x Emergency starter battery charger</li> <li>◦ Each generator has its own charger</li> </ul>
<b>SHORE POWER</b>	<ul style="list-style-type: none"> <li>◦ Shore power transformer (Pri: 380V, 400V, 415V - Sec: 400V)</li> </ul>
<b>CONVERTERS</b>	<ul style="list-style-type: none"> <li>◦ Clean Net Converter</li> <li>◦ Manufacturer – Magnus Marine VSP5</li> </ul>
<b>HYDRAULIC SYSTEM</b>	<ul style="list-style-type: none"> <li>◦ Each hydraulic consumer has its own hydraulic power pack</li> </ul>
<b>FUEL / OIL SEPARATOR</b>	<ul style="list-style-type: none"> <li>◦ AlfaLaval type PU 150 – 2.2m<sup>3</sup> / h</li> </ul>
<b>AIR CONDITIONING</b>	<ul style="list-style-type: none"> <li>◦ Heinen &amp; Hopman CSH7551-70Y-35P / AC250-202DQ</li> <li>◦ 5 x HVAC units using a chilled water loop with 4 x individual refrigeration loops</li> <li>◦ Each with a Bitzer CSH 7551 refrigeration compressor &amp; Bitzer K1973TB freshwater cooled condenser, each circuit containing approx. 45kg of R407C</li> </ul>
<b>WATER PRODUCTION</b>	<ul style="list-style-type: none"> <li>◦ 2 x HEM Reverse osmosis desalination system H80DPLX each with 1.7m<sup>3</sup> / hour freshwater production, combined 81.6 m<sup>3</sup> / day</li> </ul>
<b>FRESH WATER TREATMENT</b>	<ul style="list-style-type: none"> <li>◦ HEM freshwater treatment skid FWS 3400 sterilises &amp; treats all water produced, using 20 micron filters, charcoal filter, UV lamps &amp; Silver Ions</li> </ul>
<b>HOT WATER BOILERS</b>	<ul style="list-style-type: none"> <li>◦ 3 x Nibe SPIS 500 calorifiers, Capacity: 500 litres / each</li> </ul>
<b>TOILET SYSTEM</b>	<ul style="list-style-type: none"> <li>◦ Evac vacuum system with 2 x Jets 25MBA vacuum pumps</li> </ul>
<b>SEWAGE SYSTEM</b>	<ul style="list-style-type: none"> <li>◦ Hamann C45 chemical treatment plant</li> <li>◦ Capacity: 12,150 litres / day</li> </ul>
<b>BILGE WATER SEPARATOR</b>	<ul style="list-style-type: none"> <li>◦ 1 x RWO Rossmark fully automatic type</li> <li>◦ UltraPur OWS SKIT / S-DEB 1.5, capacity 1.5m<sup>3</sup> / hour</li> <li>◦ 1 x E-driven self-priming service fuel oil pump</li> <li>◦ 2 x E-driven self-priming fuel oil booster pumps</li> <li>◦ 1 x E-driven self-priming refuelling pump – tenders</li> </ul>

## **BOMBAS AZCUE**

- 1 x E-driven fuel oil transfer pump
- 1 x E-driven oil transfer
- 1 x E-driven gear-oil transfer pump
- 1 x Air-driven membrane type Dirty Oil / Sludge / Oily Bilge pump
- 1 x Unit w / 3 electrically driven self-priming centrifugal freshwater pumps
- 1 x Deck wash pump, electrically driven self-priming centrifugal
- 1 x Electrically driven self-priming centrifugal pool filling pump / Anti-healing pump
- 3 x Cold and 3 x Hot water circulating pumps
- 2 x Grey water pumps E-driven self-priming mono pumps
- 2 x Sewage discharge pumps E-driven self-priming mono pumps
- 1 x E-driven fire / bilge pump with pneumatic priming unit
- 1 x E-driven bilge / fire pump with pneumatic priming unit
- 1 x E-driven emergency fire / bilge pump with pneumatic priming unit

## **7. NAVIGATIONAL EQUIPMENT**

### **EQUIPMENT BRANDS**

- Wärtsilä, Raytheon, Radio Holland, Hatteland, Saab, SAM Electronics, Sailor, Simrad

### **NAVIGATIONAL BRIDGE**

- Manoeuvre and managing controls (bow / stern, main engine remote, steering) controls all executed in the same design

### **RADARS**

- S-Band radar
- X-Band radar

### **AUTOMATIC PILOT**

- Autopilot / Trackpilot 1100 Series
- 1 x NautoPilot 2015 Subsystem

### **ECHO SOUNDER**

- Debeg 4630

### **CHART PLOTTER**

- Multipilot 1100 Series

### **SPEED LOG**

- 1 x Consilium R1 log

### **ALARM SYSTEM**

- BNWAS
- 4 x 23'1" TFT screens for CCTV, TV slave from office, managing & control system – connected to display control system

### **SCREENS**

- 3 x 23'1" TFT screens (centre) working as a stand-alone integrated Raytheon Nav System, for ECDIS / conning & autopilot

### **DISPLAYS**

- 7 x 23" TFT Console Monitors (bridge)
- 2 x 17" TFT Bridge Wing Displays (wings)

### **DGPS**

- 2 x DGPS navigator Debeg 4422D

### **DGPS / GPS**

- 2 x NMEA NAV data distribution box Debeg 9510

### **MAGNETIC COMPASS**

- 1 x Magnetic compass

### **GYRO**

- 1 x Anschütz Standard 22 GG / GGM twin set
- 1 x Anschütz repeater compass (wheelhouse)

<b>COMPASSES</b>	◦ 1 x Anschütz repeater compass (steering room)
<b>RUDDER ANGLE</b>	◦ 1 x Rudder angle indication
<b>SHIP SECURITY ALERT SYSTEM</b>	◦ 1 x Debeg 3200
<b>GMDSS</b>	◦ 3 x Portable GMDSS VHF radio SP3520
<b>SATELLITE</b>	◦ 1 x Debeg 3545
<b>SAT PHONE</b>	◦ Iridium
<b>EPIRB</b>	◦ 2 x ACR global fix iPro EPIRB
<b>SART</b>	◦ 2 x ACR Pathfinder PRO
<b>DYNAMIC POSITIONING</b>	◦ Sirehna
<b>NAVTEX</b>	◦ Alden AE-2000 / DEBEG 2902
<b>WIND INSTRUMENTS</b>	◦ OMC
<b>AIS</b>	◦ UAIS Debeg 3400
	◦ 1 x Weather instruments
<b>MISC</b>	◦ UPS-Distress box, alarm panel, charger / regulator, PSU, Battery Panel

## 8. COMMUNICATION EQUIPMENT

<b>EQUIPMENT BRANDS</b>	◦ SAM Electronics, Wärtsilä, Alphanet, Radio Holland, Sperry, Marine, Thrane & Thrane
<b>SATCOM</b>	◦ 2 x INM-C Satcom Terminal Debeg 3220C ◦ 1 x Thrane & Thrane Sailor FB150 ◦ 2 x Thrane & Thrane Sailor FB500 ◦ Pri: Seatel type 6009, Sec: Seatel 4009
<b>SSB</b>	◦ 1 x Radio Debeg 3105, 150W
<b>WIFI</b>	◦ 2 x Wifi controller, Air-CT3504-K9 ◦ 66 x Wifi access point, Air-AB2802I-E-K9
<b>VHF</b>	◦ VHF Radio Sailor SP3520 ◦ Air Band Icom ◦ 3 x Debeg RT 5022 (= Sailor 5000) ◦ 4 x Debeg 6301 (= Sailor 4800)
<b>RADIO TELEPHONE</b>	◦ 1 x Sailor System 5000 MF / HF
<b>GSM</b>	◦ 2 x Dual band GSM for voice ◦ 1 x Peplink LTEA, Pepwave Max HD4 ◦ PBAX main unit with 75 x lines (incl. 16 x trunk lines) connected to onshore cables, public announcement systems, satellite communication system & GSM systems

- TELEPHONE EXCHANGE**
  - 1 x DECT Phone Network covering all interior & exterior areas
  - 1 x Public Announcing System from 1 x central area (Wheelhouse) or via selected phones via the PBAX to 3 x different zones (crew, guests & Owners)
  - Steward call system
- COMPUTERS & PRINTERS**
  - Onboard computer network with various workstations Yacht computer system (LAN) based on cisco switches PC & monitor in the 2 x offices, ECR
- LOUDHAILER**
  - 1 x Kahlenberg 4-tone electric pneumatic
- SHIP'S BELL**
  - 1 x Silver chrome plate ship's bell

## 9. DECK EQUIPMENT

- ANCHOR WINDLASSES**
  - 2 x Steen 23 - Port & SB, electric
- WARPING CAPSTANS**
  - 6 x Steen 59 9 (2 x foredeck, 4 x aft deck)
- ANCHORS**
  - 2 x 985kg Wortelboer HHP Pool N galvanised steel stud link on bow
- ANCHOR CHAINS**
  - 2 x 220m high tensile steel stud link galvanised chains on bow
- BOAT CRANE & DAVITS**
  - 1 x Model sliding provision crane: beam 1,792mm (length), beam travel 1,075mm (distance), hook travel 2,150mm (distance), lifting capacity 300kg (SWL), testing load (125%) 375kg
  - 1 x Van Driel Telescopic rescue boat crane, SWL : 1,000kg
  - 2 x Sets of sliding davits PS / SB in tender garage with SWL of 4,000kg each
- PASSERELLE**
  - 1 x 4.00m Staalart / Hydromae electro hydraulic in aluminium & teak w / illumination & connection to PBAX system
- SWIMMING LADDERS**
  - 2 x Swim platform (1 x boarding ladder, 1 x swim ladder)
  - 1 x VIP terrace
  - 1 x Pantograph
- GANGWAYS**
  - 2 x Fixed folding bulwark gangways (Port & Stbd)
- SEARCHLIGHT**
  - 2 x Xenon on main mast, ACR-RCL600A, complete with remote controls in wheelhouse
  - Manufacturer Marine pool systems, all with fresh water, heating, underwater lights
- JACUZZI**
  - 1 x Jacuzzi on owner's deck forward of owner's suite
  - 1 x Jacuzzi on bridge deck aft
- POOL FILLING SYSTEM**
  - 1 x Pool filling pump
- ELEVATORS / LIFTS**
  - 1 x Guest lift HML PH450
  - 1 x Crew lift HML PH400

## HELICOPTER TOUCH & GO HELICOPTER CRASH BOX

- Foredeck & Main Deck Aft, max. weight of 4,800kg (emergency only not commercial use)
- Various types of safety equipment
- 1 x Removable fabric awning on forward side, approx. 75m<sup>2</sup> with Tencara T40 fabric
- 1 x Removable fabric awning, approx. 8m<sup>2</sup> with Tencara T40 on the aft side
- 1 x Removable fabric sun awning
- 1 x Removable swimming pool / Owner's aft / bridge fwd awning with Tencara T40 fabric

## AWNINGS

## DECK WASH SYSTEM

- 1 x Deck wash pump system

## 10. ENTERTAINMENT EQUIPMENT

### GENERAL

- 17 x Sky boxes
- 17 x Direct TV USA boxes
- 17 x Kaleidescape players
- 1 x Kaleidescape server
- 2 x Kaleidescape blueray disc vaults, 320 each
- 17 x Apple TVs

### CENTRAL VIDEO SOURCES

- CCTV, AMC, Chart pilot, Central Bluray, Central Multimedia PC

### ALL CABINS

- Crestron controlled AV, Light, blinds, AC through iPad
- Satellite TV, Kaleidescape, Apple TV for Airplay DVD or Bluray & all Central sources

### LIVING AREAS

- Crestron controlled AV, Light, blinds, AC through iPad
- Satellite TV, Kaleidescape, Apple TV for Airplay DVD or Bluray & all Central sources

### CINEMA

- Crestron controlled AV, Light, blinds, AC through iPad
- Christie 2k Projector CP2210 2D / 3D with 2 x Vutec projection screens 1.78: 1 161" & 2.39: 1 202" DCP server for commercial cinema content
- Cinema can also be used as a dance floor with smoke machine, built-in disco lights & a bar

### MUSIC

- Main deck aft has fully integrated sound system, connection for lights & DJ equipment or record player
- Music can be distributed around the entire vessel, inside & out, so that it is heard everywhere
- Wellness area with gym, sauna, steam room and massage room
- Elevator

## **ADDITIONAL DECK FACILITIES**

- Fold-out balconies in the main deck saloon and lower deck guest entrance
- DMX lighting and top range sound system by the main pool
- Helideck / disco
- Al fresco dining for 22 x guests
- 2 x Jacuzzis
- 1 x Pool
- At anchor stabilisers
- Large screen TV (105") in the master lounge

## **11. GALLEY EQUIPMENT**

- Moeleker Brand
- 1 x Ceramic cooking isle with 4-zones with 4kW with pot detection
- 1 x Induction cooking isle with 4-zones of 3.5kW with pot detection
- 2 x Fryers of 9kW each
- 1 x Griddle plate
- 1 x Steam oven, combi-duo lower part 10 x 1 / 1 Gastronorm & on top a 6 x 1 / 1 Gastronorm, both with computer controlled program
- 1 x Dishwasher with built in soap dosing unit
- 1 x Dishwasher
- 1 x Ice cube maker
- 1 x Microwave
- 1 x Trash compactor
- 1 x Refrigerator work bank with 4 x doors; 1 / 1 Gastronorm
- 1 x Refrigerator 2 / 1 Gastronorm
- 1 x Freezer 2 / 1 Gastronorm
- 2 x Sinks
- 2 x Waste disposer including air pressure on / off switch
- 1 x Salamander, useable space 54.5cm x 37.5cm
- 1 x Overhead warmer
- 1 x Hood

## **12. SECURITY & SAFETY EQUIPMENT**

### **CCTV**

- System connects to Yachts LAN Controlled from crew mess PC, bridge & bridge wings via 4 x cameras
- 2 x PTZ camera main mast
- 1 x PTZ camera main deck aft
- 1 x Fixed camera main deck passageway PS
- 1 x Fixed camera main deck passageway SB
- 2 x Fixed cameras lower engine room PS & SB
- 2 x Fixed cameras engine room fore & aft
- 2 x Fixed cameras in each generator room
- 2 x Fixed cameras tender garage PS & SB FRW
- 1 x PTZ camera wheelhouse
- 1 x PTZ camera tender doors

### **CAMERAS**

**SECURITY**

- General alarm system in accordance to Class
- Intruder alarm monitored and alarmed via the AMC system
- Pirate protection unit with 2 x remote controlled nozzles
- 1 x Rescue boat Zodiac Ribo 420 with 1 x outboard 40 Hp engine on foredeck
- Dedicated telescopic foredeck crane make Van Driel w / SWL of 1,000kg & 8.15m outreach
- Both according to MCA rules, for 6-persons + equipment

**SAFETY**

- According to class requirement:
- Life rafts, Lifejackets, Immersion Suits
- Rockets, smoke signals
- Medicine box, supplied according to MCA
- Tempus unit
- Neil Robertson stretcher
- Enclosed space SCBA gear, reach & rescue pole
- 1 x Consilium / Salwico CS 4000 system connected to the AMS-system - in all accommodation spaces, the engine room and technical spaces according Class

**FIRE FIGHTING**

- 1 x Marioff Hi-Fog 2000 water mist system in ER
- 1 x Fire detection and smoke alarm installation
- Heat & smoke detectors in accommodation, infra-red detector over main & auxiliary engines
- 1 x CO2 system in galley according to class
- Fire extinguishers and fire hoses with nozzles
- 4 x Sets of 2 x firemen's outfits complete with hoods, gloves & boots
- Breathing apparatus
- Safety torch
- Fire axes
- Fireproof suit
- 3 x Identical self-priming centrifugal pumps

**ALARMS**

- PLC based technical alarm system for the engine room management
- Gas detection system

**13. TENDERS & WATERSPORTS EQUIPMENT****TENDERS**

- 1 x 9.5m Hodgdon Sport tender
- 1 x 10.5m Hodgdon Limo tender
- 1 x 10.5m Euro Offshore watersports / work tender with beach-landing bow
- 1 x Rescue boat Zodiac type Ribo 420

**WATERSPORTS**

- 2 x Yamaha VXR Cruiser Wave Runner
- 1 x Yamaha FX Cruiser Wave Runner
- 4 x Seabob F5s + charging stations
- Dive compressor
- 8 x BCD, Tanks, regulators, octopus

**GYM**

- Radinn G2X Electric
- 2 x Woodway Pathfinder treadmill
- 1 x Octane cross trainer
- 1 x Lemond Reymaster spin bike
- Various free weights and gym equipment

**14. MAINTENANCE NOTES**

- 10 -year special survey completed in Oct 2020
- Upgraded chiller controller MC3, 2020
- Annual haul-out, 2019
- Upgraded power management system, 2019
- Upgraded AV / IT 2019, 4G Peplink on board
- Upgraded Cisco wifi system, 2018
- Upgraded Crestron processors guest areas with iPad conversion
- Upgraded AV to 4K upper deck salon and master cabin
- Upgraded redundant file servers setup with virtual servers and core switches, 2017
- Upgraded CCTV servers, 2016
- Repaint in 2015 / 2017 and the Mast in 2020

**15. MAJOR ENGINEERING WORKS****PROPULSION**

- Main engines 4000 hrs service, 2020
- MTU maintenance schedule followed strictly. QL3 or above done by MTU certified technicians.
- New flow meter setup installed 2020
- Main engines major (8000 hrs) overhaul, 2017
- Both exhaust silencers and piping replaced 2010
- Propellers replaced, 2012 & 2013

**MANEUVERING**

- Bow thruster noise suppressor setup changed 2020
- Bow thruster last serviced in 2019
- Stern thruster VFD cabinet modules all changed 2019
- Stern thruster serviced 2017

**GENERATORS**

- MTU maintenance schedule followed strictly. QL3 or above done by MTU certified technicians.
- All alternator bearings on all generators changed, 2019
- Stbd generator major (18k) overhaul, 2015 & 2019
- PS & CTR major (12k) overhaul, 2014 & 2018
- HUG units installed, 2014

**SAFETY**

- New outboard on MOB boat, 2018
- All hi-fog nozzles changed
- Additional (100+) fire detectors installed next to electrical installations and above ceilings, 2012
- Install chemical treatment for Hi-Fog
- All overboard valves serviced, 2019

**TANKS, VALVES**

- SW intercooler pump 1 replaced, 2019

**& PIPING**

- Silver ion sterilizer upgraded, 2019
- Hamann Sewage Plant pumps replaced, 2018/2019
- Greywater piping changed, 2017
- Main engine room ducting replaced, 2019
- Main supply fan fire dampers in engine room changed, 2019
- Provision cooling fridge & freezer, 2 compressors changed, 2019 / 2020

**HVAC**

- Upgrade chiller controller to MC3 controller
- Change all air handler fans

**ELECTRICAL**

- Shore isolation transformer upgrade, 2013

**POOL & JACUZZIS**

- Pool moving floor overhaul, 2020

**16. DESCRIPTION & KEY FEATURES**

SEVEN SEAS was built to the Owner's exacting requirements by Oceanco in collaboration with Nuvolari & Lenard, Molly Isaksen Interiors and Wright Maritime Group.

Commissioned and operated by an experienced yacht Owner and management team since her original launching, SEVEN SEAS has consistently been maintained to the highest standard.

This yacht is capable of taking its Owner and guests global cruising in the most luxurious of style. Having completed her 5-year Class Survey in 2015, 10-year Hull Survey in 2019, a full repaint between 2015 and 2017 and 10-year Class Survey completed in 2020, she is in turnkey condition and ready for a new Owner.

This exceptional 86 meter Oceanco combines exceptional craftsmanship with striking exterior lines by the acclaimed Nuvolari & Lenard. SEVEN SEAS accommodates 15 guests in 7 cabins (this can be increased to 20 by means of the forward VIP cabin converting in a double suite, the Owner's office sofa converting into a double bed, and a Pullman in the lower deck VIP cabin).

SEVEN SEAS offers several luxurious features including a professional cinema, enormous aft deck, a private attached Owner's deck forward, pool, gymnasium, glass elevator, massage room, gym, a sauna and steam room in the gym / spa area and three large custom built tenders.

Her contemporary interior features walnut, teak and rosewood, accented with natural materials and fabrics. The yacht accommodates 15 to 20 guests. The master suite includes an expansive office, dressing room and a private exterior deck area with a Jacuzzi pool. She has a VIP suite with his & her bathrooms, which has the option to convert into two separate suites by means of a dividing wall. Additionally, there are two double VIP suites, one twin VIP cabin and two double guest cabins.

Adjacent to the main salon is an imposing 250m<sup>2</sup> (2,690ft<sup>2</sup>) semi-covered deck area that

can host everything from casual al fresco dining to a black-tie gala.

SEVEN SEAS boasts an abundance of watersports equipment and toys.

◦ **KEY FEATURES**

- Striking exterior design by Nuvolari & Lenard
- Timeless interior design by Nuvolari & Lenard and Molly Isaksen
- Versatile deck space and guest accommodation across five decks
- Professional cinema
- Fully equipped gym, massage room, sauna and steam room on bridge deck
- Large pool on the aft deck
- Two exterior Jacuzzis
- Consistently maintained to the highest standard

NOT OFFERED FOR SALE TO U.S. RESIDENTS WHILE IN U.S. WATERS

## Exclusions

---

Owner's personal belongings.

## Disclaimer

---

The Company offers the details of this vessel or yacht in good faith but cannot guarantee or warrant the accuracy of this information nor warrant the condition of the vessel. A buyer should instruct his representatives, agents, or his surveyors, to investigate such details as the buyer desires validated. This vessel or yacht is offered subject to prior sale, price change, or withdrawal without notice.

# PHOTOS

003 IMG\_5314



004 UpperDeckSalon1



005 UpperDeckSalon



006 UpperDeckSalon2



010 IMG\_3957



012 cinema1



015 1stFILanding



016 Master Bed



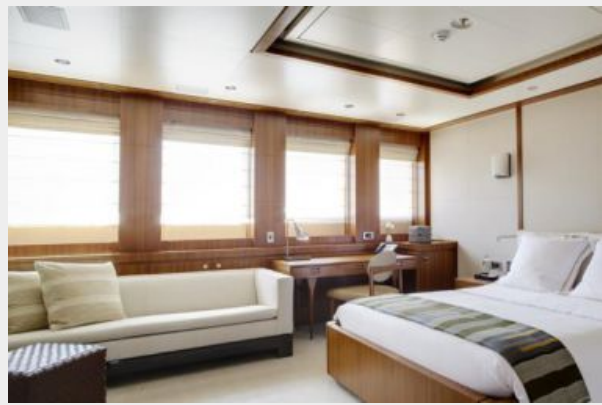
0191 UpperDeckOwner Bath1



0272 FitnessEntry



023 Cabin3



024 Cabin1



028 IMG\_2503



029 IMG\_2463



DJI\_0011



032 IMG\_2445



0393 IMG\_2189



0392 IMG\_2115



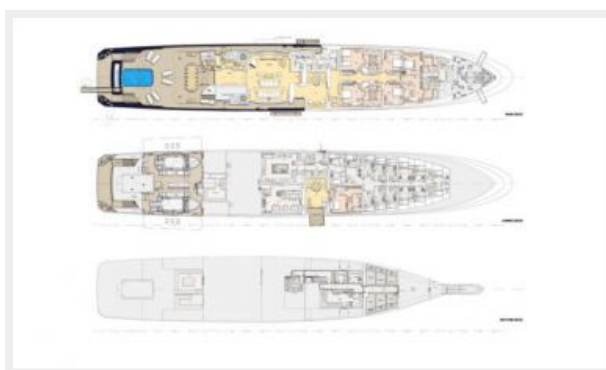
043 IMG\_2378



044 Seven Seas GA Rev G 25.jan.21HR - Top Half



045 Seven Seas GA Rev G 25.jan.21HR - Bottom Half



# CONTACTS

---

Andrey Shestakov, leading yacht broker of the sales department of Shestakov Yacht Sales Inc. Shestakov Yacht Sales Inc., the official representative of the Miami/Fort Lauderdale FL headquarters.

## Contact details

---

Email:  
**andrey@shestakovyachtsales.com**

Web: [shestakovyachtsales.com/en/](http://shestakovyachtsales.com/en/)

## Telephones

---

USA: **+1(954)274-4435**

## Office hours

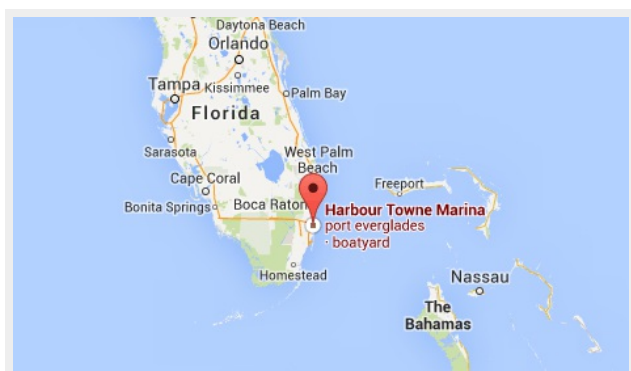
---

Monday – Saturday: **9:00 - 21:00 EDT**

Sunday: **closed**

## Address

---



Harbour Towne Marina, 850 NE 3rd St,  
STE 213, Dania, FL 33004