

MUZO'S 20 — TANSU YACHTS



Builder: [Tansu Yachts](#)

Year Built: 2020

Model: Motor Yacht

Price: PRICE ON APPLICATION

Location: Turkey

LOA: 65' 8" (20.00m)

Beam: 18' 9" (5.70m)

Max Draft: 4' 7" (1.38m)

Cruise Speed: 11 Kts. (13 MPH)

Max Speed: 13.2 Kts. (15 MPH)

Our experienced yacht broker, Andrey Shestakov, will help you choose and buy a yacht that best suits your needs **MUZO'S 20 — Tansu Yachts** from our catalogue. Presently, at Shestakov Yacht Sales Inc., we have a wide variety of yachts available on our sale's list. We also work in close contact with all the big yacht manufacturers from all over the world.

If you would like to buy a yacht **MUZO'S 20 — Tansu Yachts** or would like help answering any questions concerning purchasing, selling or chartering a yacht, please call **+1(954)274-4435**

TABLE OF CONTENTS

TABLE OF CONTENTS	2
SPECIFICATIONS	5
Basic Information	5
Dimensions	5
Speed, Capacities and Weight	5
Accommodations	5
Hull and Deck Information	5
Engine Information	5
DETAILED INFORMATION	6
MUZO'S	6
Exclusions	6
Disclaimer	6
PHOTOS	8
GOPR0170	8
GOPR0171	8
GOPR0184-min (1)	8
GOPR0221-min	8
GOPR0172-min (1)	9
GOPR0200-min	9
GOPR0173-min (1)	9
GOPR0175-min	9
GOPR0195-min	10
GOPR0186-min (1)	10
GOPR0177-min	10
GOPR0180-min	10
GOPR0181-min	11
GOPR0190-min	11
GOPR0241-min	11

GOPR0191-min	11
GOPR0182	12
GOPR0276-min	12
GOPR0189	12
GOPR0198	12
GOPR0206	13
GOPR0208	13
GOPR0209	13
GOPR0211	13
GOPR0215	14
GOPR0223	14
GOPR0232	14
GOPR0230	14
GOPR0273	15
GOPR0236	15
GOPR0275	15
GOPR0292	15
GOPR0182	16
GOPR0189	16
GOPR0206	16
GOPR0198	16
GOPR0208	17
GOPR0209	17
GOPR0211	17
GOPR0215	17
GOPR0223	18
GOPR0230	18
GOPR0232	18
GOPR0236	18

GOPR0273	19
GOPR0275	19
GOPR0292	19
CONTACTS	20
Contact details	20
Telephones	20
Office hours	20
Address	20

SPECIFICATIONS

Basic Information

Category: Motor Yacht

Model Year: 2020

Year Built: 2020

Country: Turkey

Dimensions

LOA: 65' 8" (20.00m)

LWL: 64' 0" (19.50m)

Beam: 18' 9" (5.70m)

Max Draft: 4' 7" (1.38m)

Speed, Capacities and Weight

Cruise Speed: 11 Kts. (13 MPH)

Max Speed: 13.2 Kts. (15 MPH)

Displacement: 130072.73458 Pounds

Fuel Capacity: 750.24862768 Gallons

Accommodations

Total Cabins: 3

Sleeps: 6

Hull and Deck Information

Hull Material: Wood

Interior Designer: Riza Tansu

Engine Information

Engines: 2

Manufacturer: Cummins

Model: QSB 6.7

Fuel Type: Diesel

DETAILED INFORMATION

MUZO'S

The 65-foot (20m) MUZO'S is an exceptional yacht designed by the renowned Riza Tansu at Tansu Yachts. The yacht follows Tansu Yacht's distinguished exterior styling with strong angular lines and a military appearance. With a wooden epoxy laminated fast-displacement hull, allows her to be stable at all speed and in bed seas. The motor yacht has a max speed of 13.5 knots and a cruising speed of 11 knots. For those looking for a yacht with long-range capabilities, MUZO'S delivers with the ability to cruise 2,500-nautical-miles at an economical speed.

The luxury motor yacht's interior is light and airy with striking contemporary styling. The main salon features two large sofas on either side, with a coffee table in the middle and an entertainment center with ample storage. This inviting space is an ideal area for unwinding as well as socializing with friends and family. Forward of MUZO's main salon is a well laid out galley and fully equipped pilothouse.

MUZO'S offers accommodations for up to six guests in the luxurious comfort of three well-appointed staterooms. The master stateroom, located forward on the lower deck, is full-beam and features a double bed as well as an en-suite bathroom. The additional staterooms aboard include a double-bed VIP and a twin-bed stateroom — en-suite bathrooms accompany both staterooms.

The motor yacht's outdoor living areas allow for on-water living at its finest. MUZO'S flybridge is an entertaining dream. Large and spacious with impressive 360-degree views, the flybridge has a large sunpad for sunbathing, a settee with a teak table for socializing and alfresco dining and a helm. Aft is storage for the yacht's tender. On the main deck aft, MUZO'S has additional alfresco dining. A few steps down is a large swim platform for easy water access.

Exclusions

Owner's personal belongings.

Disclaimer

The Company offers the details of this vessel or yacht in good faith but cannot guarantee or

warrant the accuracy of this information nor warrant the condition of the vessel. A buyer should instruct his representatives, agents, or his surveyors, to investigate such details as the buyer desires validated. This vessel or yacht is offered subject to prior sale, price change, or withdrawal without notice.

PHOTOS

GOPR0170



GOPR0171



GOPR0184-min (1)



GOPR0221-min



GOPR0200-min



GOPR0172-min (1)



GOPR0173-min (1)



GOPR0175-min



GOPR0195-min



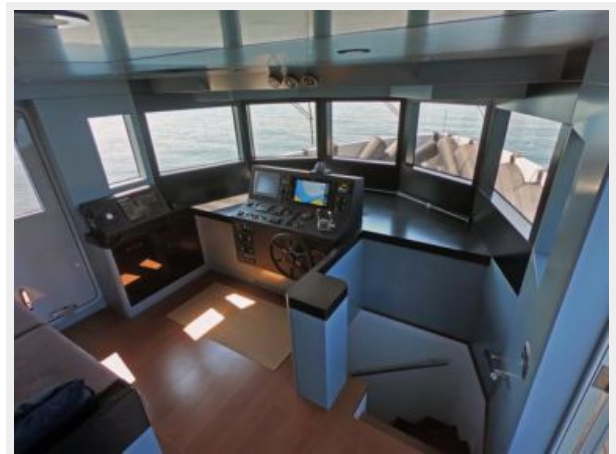
GOPR0186-min (1)



GOPR0177-min



GOPR0180-min



GOPR0181-min



GOPR0190-min



GOPR0241-min



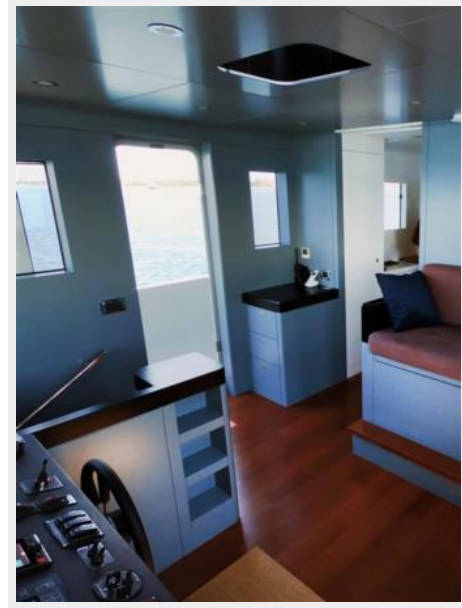
GOPR0191-min



GOPR0276-min



GOPR0182



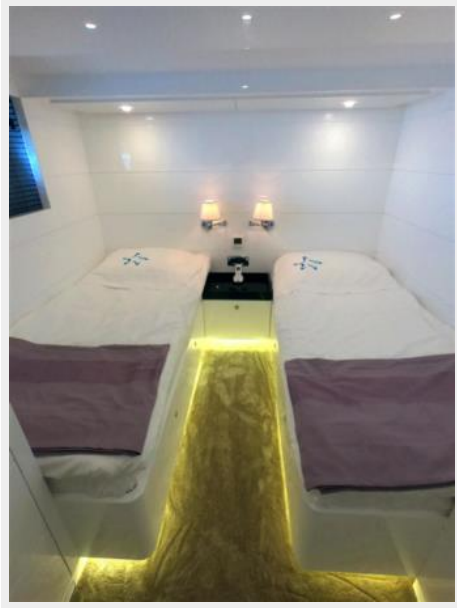
GOPR0189



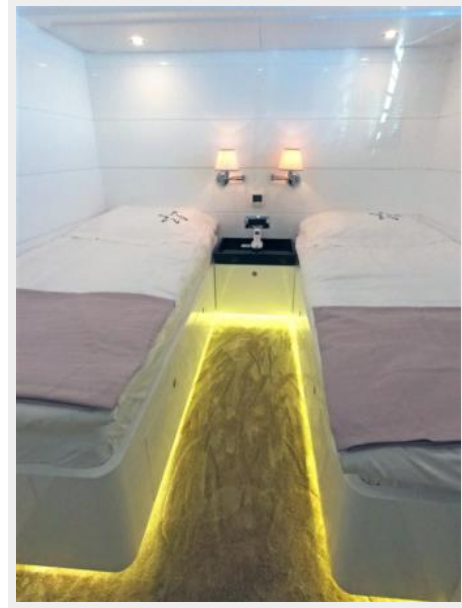
GOPR0198



GOPR0206



GOPR0208



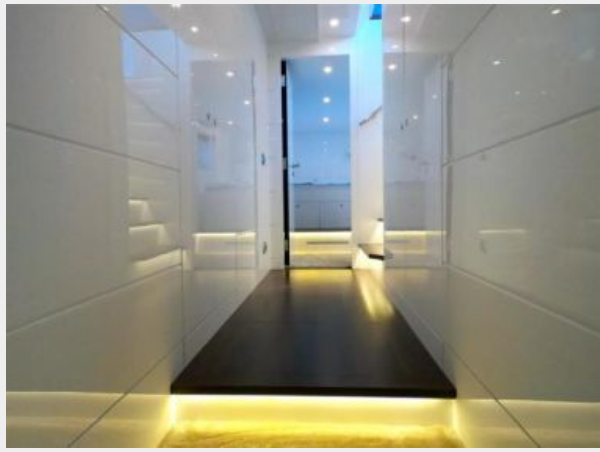
GOPR0209



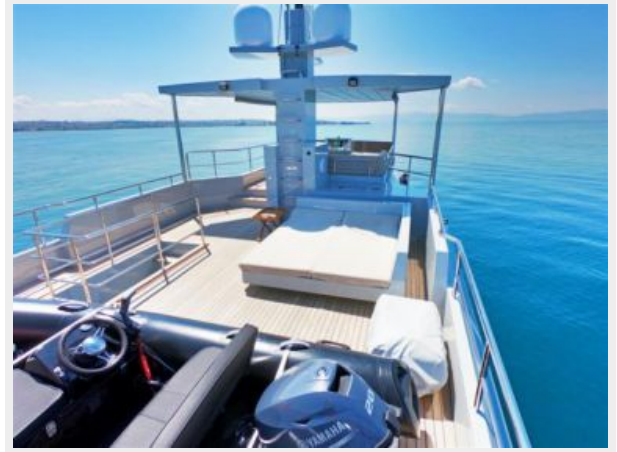
GOPR0211



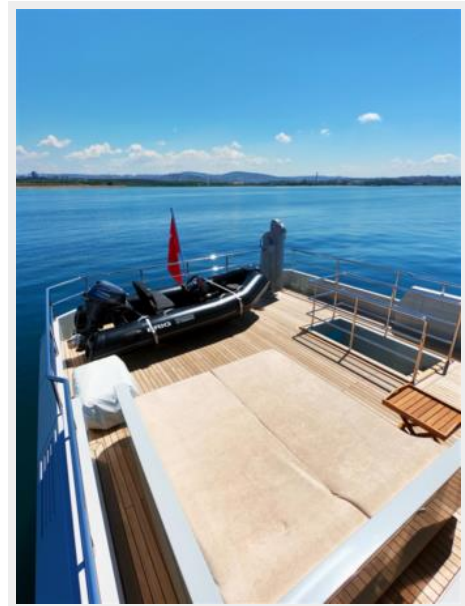
GOPR0215



GOPR0223



GOPR0232



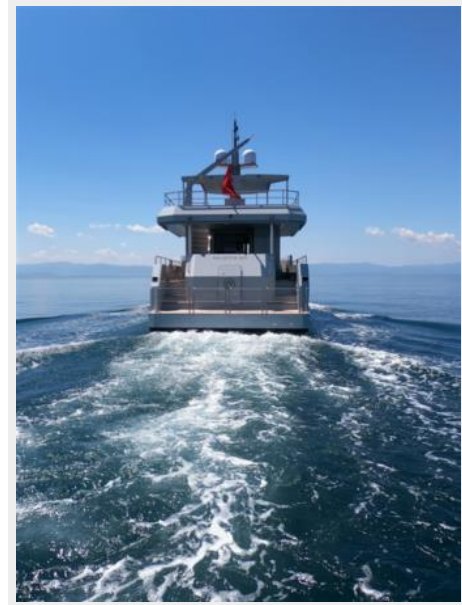
GOPR0230



GOPR0236



GOPR0273



GOPR0275



GOPR0292



GOPR0182

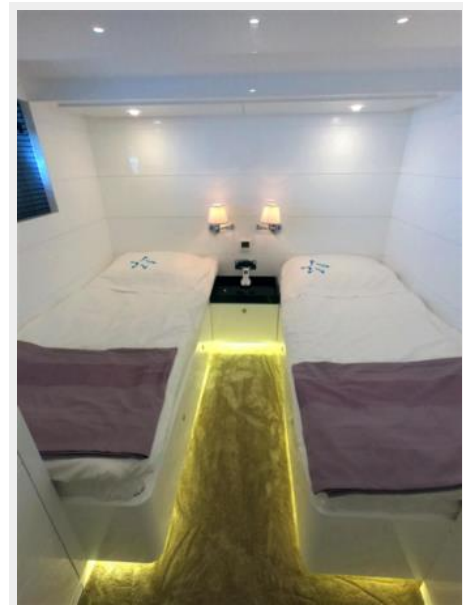


GOPR0189

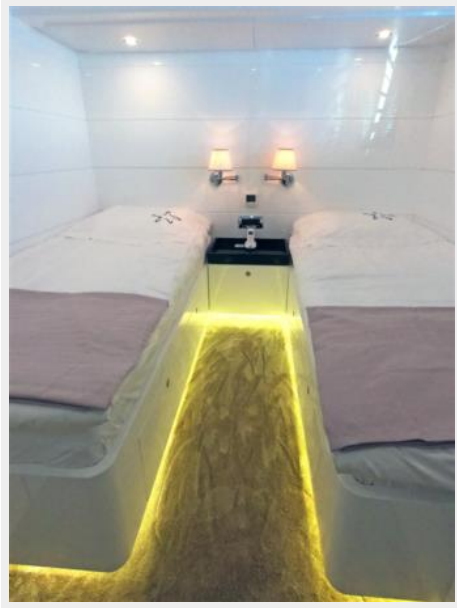


GOPR0206

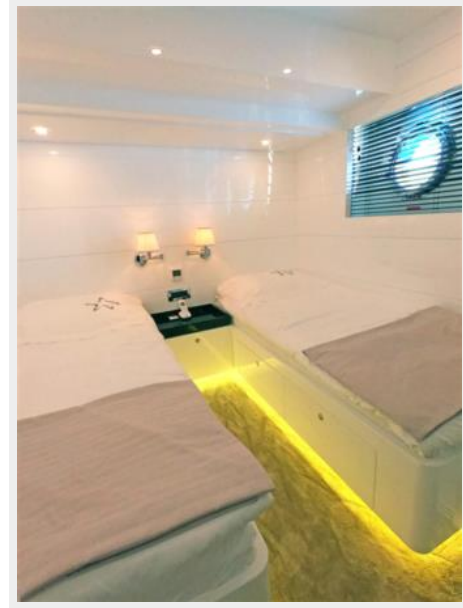
GOPR0198



GOPR0208



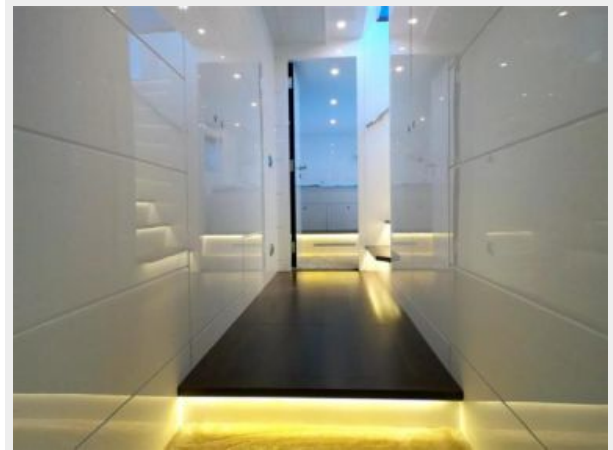
GOPR0209



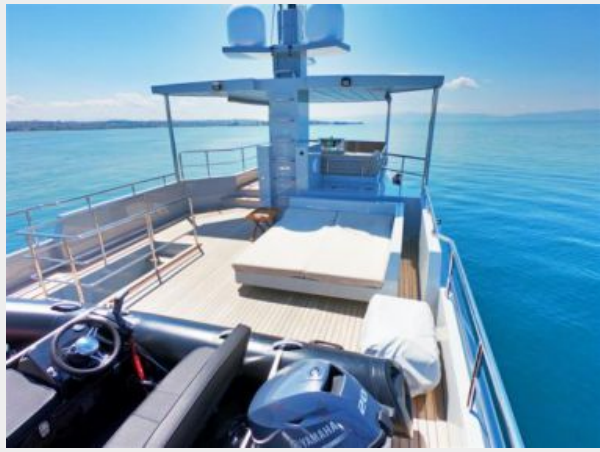
GOPR0211



GOPR0215



GOPR0223



GOPR0230



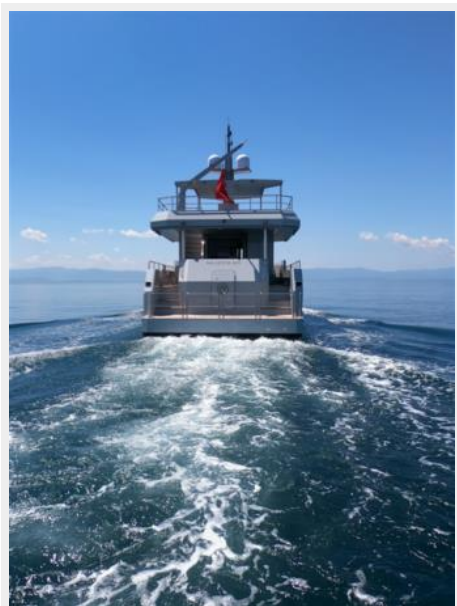
GOPR0232



GOPR0236



GOPR0273



GOPR0275



GOPR0292



CONTACTS

Andrey Shestakov, leading yacht broker of the sales department of Shestakov Yacht Sales Inc. Shestakov Yacht Sales Inc., the official representative of the Miami/Fort Lauderdale FL headquarters.

Contact details

Email: andrey@shestakovyachtsales.com

Web: shestakovyachtsales.com/en/

Telephones

USA: +1(954)274-4435

Office hours

Monday – Saturday: **9:00 - 21:00** EDT

Sunday: **closed**

Address



Harbour Towne Marina, 850 NE 3rd St,
STE 213, Dania, FL 33004