

## EXODUS — SUNSEEKER



**Судостроитель:** [SUNSEEKER](#)

**Год постройки:** 2019

**Модель:** Моторная яхта

**Цена:** **ЦЕНА ЯХТЫ ПО ЗАПРОСУ**

**Местонахождение:** Italy

**Длина общая:** 131' 5" (40.05m)

**Ширина:** 26' 7" (8.09m)

**Мин. осадка:** 8' 11" (2.70m)

**Макс. осадка:** 8' 11" (2.70m)

**Крейс. скорость:** 12 Kts. (14 MPH)

**Макс. скорость:** 21 Kts. (24 MPH)

Купить **EXODUS — SUNSEEKER** а также выбрать подходящую вам яхту из нашего каталога яхт вам поможет опытный яхтенный брокер Андрей Шестаков. На сегодняшний день компания **Shestakov Yacht Sales Inc.** имеет большое количество яхт в собственном списке продаж, а также тесно сотрудничает со всеми крупными яхтенными производителями по всему миру.

Для того чтобы купить яхту **EXODUS — SUNSEEKER** а также проконсультироваться по любому вопросу связанному с покупкой, продажей, чартером яхт позвоните по телефону **+7(918)465-66-44**.

# ОГЛАВЛЕНИЕ

ОГЛАВЛЕНИЕ	2
ХАРАКТЕРИСТИКИ	4
Обзор	4
Основная информация	5
Размеры	5
Скорость, вместимость и масса	5
Размещение	5
Корпус и палуба	6
Информация о двигателе	6
ПОДРОБНОЕ ОПИСАНИЕ	7
Full Specification	7
Исключения	14
Отказ от ответственности	15
ФОТОГРАФИИ	16
Dining Salon 5448-HDR ©Jim Raycroft	16
Main Salon 5460-HDR ©Jim Raycroft	16
Sky Lounge 5468 ©Jim Raycroft	16
Sky Lounge 5463 ©Jim Raycroft	16
Master 003-HDR ©Jim Raycroft	16
Master 013-HDR ©Jim Raycroft	16
Master 028-HDR ©Jim Raycroft	17
Master Bath 002-HDR ©Jim Raycroft	17
Master Bath 005-HDR ©Jim Raycroft	17
Guest Foyer 9944-HDR ©Jim Raycroft	17
Guest Port Aft 012-HDR ©Jim Raycroft	17
Guest Port Aft Bath 001 ©Jim Raycroft	17
Guest Stbd Aft 020-HDR ©Jim Raycroft	18
Guest Stbd Aft Bath 003-HDR ©Jim Raycroft	18

Guest Port Fwd 014-HDR-1 ©Jim Raycroft	18
Guest Port Fwd 035-HDR ©Jim Raycroft	18
Guest Port Fwd Bath 007-HDR ©Jim Raycroft	18
Guest Stbd Fwd 9928-HDR ©Jim Raycroft	18
Guest Stbd Fwd Bath 9932-HDR ©Jim Raycroft	19
Bridge 5494 ©Jim Raycroft	19
Dining 3244 ©Jim Raycroft	19
Sun Deck 3045 ©Jim Raycroft	19
Sun Deck 3286 ©Jim Raycroft	19
Sun Deck 3307 ©Jim Raycroft	19
Toys 5022 ©Jim Raycroft	20
Aerial_5722_©Jim_Raycroft	20
Aerial_5646_©Jim_Raycroft	20
Aerial 0319 ©Jim Raycroft	20
exodus ga 2020	20
<b>КОНТАКТЫ</b>	<b>21</b>
Контактная информация	21
Телефоны	21
Время работы	21
Адрес	21

---

# ХАРАКТЕРИСТИКИ

---

## Обзор

---

The 40m 2019 Sunseeker EXODUS is now offered for sale. She represents the most competitively priced, recent model 131' available on the market today, turn-key and ready for the summer season.

A sleek and modern tri-deck yacht from the luxury British yard's popular 131 Series, EXODUS is currently in the yard undergoing routine maintenance and will relocate to the Monaco area towards the end of May.

Inside, EXODUS's opulent interiors have been custom designed and are made for entertaining. The main deck salon features floor-length windows that allow the area to be bathed in sunshine during the day, while the sky lounge can convert to a cinema room.

EXODUS can accommodate 10+2 guests across five cabins, including a full-beam Owner's suite on the main deck. There are also two doubles and two convertible twins on the lower deck, with an extra Pullman berth in each of the twin cabins.

RINA classed and MCA compliant, with her five-cabin layout, EXODUS is well positioned for the charter market and her MTU 12V 4000 M93L diesel engines come with extended warranty for three years or 3,000 hours.

EXODUS comes with a Williams 565 Diesel Jet tender, two Sea-Doo RXP-X300 and two Sea Bobs. She cruises at 12 knots and has a top speed of 21 knots.

- Key features:
  - Hull 15 of highly successful Sunseeker 131 series
  - Detailed specification with €3.5m of options
  - Under MTU extended warranty
  - Commercially registered with great charter potential
  - Turnkey for the season with all major services performed
  - Motivated seller following €3.6m price reduction over the last 4 months

## Основная информация

Тип судна: Моторная яхта

Подкатегория: Semi-Displacement

Модельный год: 2019

Год постройки: 2019

Страна: Italy

## Размеры

Длина общая: 131' 5" (40.05m)

Ширина: 26' 7" (8.09m)

Мин. осадка: 8' 11" (2.70m)

Макс. осадка: 8' 11" (2.70m)

## Скорость, вместимость и масса

Крейс. скорость: 12 Kts. (14 MPH)

Дальность на крейсерской скорости:  
1116

Макс. скорость: 21 Kts. (24 MPH)

Водоизмещение: 417996.448752 Pounds

Чистый вес: 343 Pounds

Вместимость воды: 1307.6516574  
Gallons

Объем топливного бака: 7555.3206872  
Gallons

Расход топлива: 3257.24140116 Gallons

## Размещение

Всего кают: 5

Спальные места: 12

Каюта капитана: Да

Каюты экипажа: 4

Спальных мест экипажа: 7

## Корпус и палуба

---

**Материал корпуса:** GRP

**Материал палубы:** Teak

**Цвет корпуса:** White

**Дизайнер корпуса:** Sunseeker  
International

**Дизайнер экстерьера:** Sunseeker  
International

**Дизайнер интерьера:** Sunseeker  
International

## Информация о двигателе

---

**Двигатели:** 2

**Производитель:** MTU

**Модель:** 12V 4000 M93L

**Тип топлива:** Diesel

# ПОДРОБНОЕ ОПИСАНИЕ

## Full Specification

```
#edmiston-espec { font-family: 'Helvetica Neue LT Std', 'Sans'; font-weight: 200; font-style:
normal; text-align: justify; text-justify: inter-word; line-height: 1.5em; color: #444; } #edmiston-
espec table { border-spacing: 0px; border-collapse: collapse; } #edmiston-espec td { text-align:
left; vertical-align: top; padding: 0px; margin: 0px; line-height: 1.5em; } #edmiston-espec th { text-
align: left; vertical-align: top; padding: 0px; margin: 0px; width: 5cm; } #edmiston-espec h1 { font-
family: 'Times New Roman','Serif'; color: #DB001E; } #edmiston-espec h2 { font-family: 'Times
New Roman','Serif'; color: #DB001E; } #edmiston-espec h3 { font-family: 'Times New
Roman','Serif'; color: #222; } #edmiston-espec ul { list-style: none; margin: 0; padding: 0 0 0 20px;
} #edmiston-espec li.bullet { list-style: disc; }
```

### 1. MAIN CHARACTERISTICS

<b>TYPE</b>	◦ Semi-Displacement
<b>HULL NO.</b>	◦ 15 (of 16 in the series)
<b>MODEL</b>	◦ 131
<b>BUILDER</b>	◦ Sunseeker International
<b>NAVAL ARCHITECT</b>	◦ Sunseeker International
<b>EXTERIOR DESIGN</b>	◦ Sunseeker International
<b>INTERIOR DESIGN</b>	◦ Sunseeker International / Owner
<b>YEAR</b>	◦ 2019
<b>CALL SIGN</b>	◦ ZGIM9
<b>IMO</b>	◦ 9881249
<b>CLASSIFICATION</b>	◦ Rina C + Hull. Mach Ych EFP DMS (Enhanced fire protection & damage stability) ◦ MCA LY3, commercial
<b>CONSTRUCTION</b>	◦ GRP Hull & Superstructure, Teak decks
<b>CREW</b>	◦ 7
<b>FLAG</b>	◦ Cayman Islands
<b>ENGINES</b>	◦ 2 x 3,181Hp MTU 12V 4000 M93L, Diesel
<b>GT</b>	◦ 343
<b>NT</b>	◦ 102
<b>DISPLACEMENT</b>	◦ 189,60 tons

### 2. DIMENSIONS

**LOA** ◦ 40.05m / 131'5"

**LR**      ◦ 32.82m / 107'9"

**BEAM**    ◦ 8.09m / 26'7"

**DRAFT**   ◦ 2.70m / 8'11"

### 3. SPEED & RANGE UNDER POWER

**MAXIMUM SPEED**      ◦ 21 knots @ 2,100 rpm

**CRUISING SPEED**      ◦ 12 knots @ 1,250 rpm

**FUEL CONSUMPTION**      ◦ 21,130 litres / hour @ 21 knots  
   ◦ 12,330 litres / hour @ 12 knots

**RANGE**                      ◦ Approx. 1,116nm at cruising speed

### 4. CAPACITIES

- 10 + 2 x Guests in 5 cabins:
- 1 x Master cabin on main deck forward with king size bed, en suite with underfloor heating and wardrobe
- GUESTS**      ◦ 2 x VIP cabins on lower deck midship with queen size bed and en suite with underfloor heating
- 2 x Twin cabins on lower deck forward with sliding convertible single bed, pullman and en suite with underfloor heating
- 7 x Crew in 4 cabins:
- CREW**            ◦ 3 x Bunk-bed cabins with en suite
- 1 x Single cabin with en suite
- FUEL**            ◦ 28,600 litres / 7,555 US gallons
- FRESH WATER**    ◦ 4,950 litres / 1,308 US gallons
- GREY WATER**    ◦ 1,350 litres / 356 US gallons
- BLACK WATER**    ◦ 1,450 litres / 383 US gallons

### 5. ACCOMMODATION

Delivered to her highly experienced Yacht Owner in June 2019, EXODUS is clearly the highest specified and equipped Sunseeker 131 built to date from both a guest and technical perspective.

EXODUS features a stunning and unique interior design with principal cabinetry executed in high gloss 'wenge' wood; complimented by a wide range of bespoke furniture pieces as well as an exquisite selection of marbles sourced directly from stone quarries in Italy and South America.

The main salon and wheelhouse deck skylounge afford the guests two wonderful entertaining and relaxation areas with warm, welcoming and relaxed ambiances. Guest day heads are located on both the main and wheelhouse decks.

The skylounge is fitted with blackout blinds and makes an ideal cosy movie salon equipped with high quality surround sound and a 88" television screen. The sky lounge



also features a welcoming cocktail bar on the port side.

Floor to ceiling windows on both the main and wheelhouse decks allow the interior to be bathed in natural light during the day, whilst the Vimar intelligent LED lighting system with dimable and concealed lighting allows the interior guest areas and exterior decks to set a huge array of evening moods to suit the guests.

EXODUS' interior accommodation is based on a traditional five cabin layout; Master suite forward on the main deck and four en suite guest cabins located on the lower deck.

The Master cabin forward on the main deck is full beam and features large windows. The sumptuous Master bathroom features spectacular Portoro Nero marble and has a centrally located shower. Within the shower a comfortable marble seat is installed in order to allow guests to really benefit from the relaxing steam shower function.

EXODUS has the added flexibility of the two forward twin cabins being convertible and can therefore be set up as either twin, or double beds. The two forward cabins also feature a children's pullman berth in each cabin, allowing EXODUS to accommodate up to 12 guests in total. With the two forward cabins prepared as doubles EXODUS can feature five comfortable double bedded guest cabins.

Each of the guest cabins features a different individual marble type and colour.

The Master en suite bathroom and guest bathrooms are fitted with heated towel rails, underfloor heating and are equipped with a full range of guest amenities.

## 6. MECHANICAL EQUIPMENT

<b>ENGINES</b>	<ul style="list-style-type: none"> <li>○ 2 x 3,181Hp MTU 12V 4000 M93L, Diesel</li> <li>○ MTU extended warranty (3 years or 3,000 hours)</li> </ul>
<b>ENGINE HOURS</b>	<ul style="list-style-type: none"> <li>○ As of 14th December 2020</li> <li>○ Port: 907 / Stbd: 907 hours</li> </ul>
<b>GEARBOX</b>	<ul style="list-style-type: none"> <li>○ 2 x ZF 7600 A, ratio 3.286:1</li> </ul>
<b>PROPELLERS</b>	<ul style="list-style-type: none"> <li>○ 2 x Duplex F51 high grade stainless steel</li> <li>○ 2 x 5-blade NAB bronze propellers</li> </ul>
<b>RUDDER ANGLE</b>	<ul style="list-style-type: none"> <li>○ 1 x Simrad RF45X</li> </ul>
<b>STEERING SYSTEM</b>	<ul style="list-style-type: none"> <li>○ Wills Ridley</li> </ul>
<b>STABILISERS</b>	<ul style="list-style-type: none"> <li>○ ABT Trac 440 digital fin</li> </ul>
<b>THRUSTERS</b>	<ul style="list-style-type: none"> <li>○ Bow Thruster: ABT TRAC 100Hp (513mm)</li> <li>○ Stern Thruster: ABT TRAC 65Hp (412mm)</li> </ul>
<b>GENERATORS</b>	<ul style="list-style-type: none"> <li>○ 2 x 80kW Kohler 80EFOZDJ - 400/230V 3-Phase 50Hz - with sound shields, upgraded from standard</li> </ul>
<b>GENERATOR HOURS</b>	<ul style="list-style-type: none"> <li>○ As of 14th December 2020</li> <li>○ Port: 2,544 / Stbd: 2,329 hours</li> <li>○ 1 x 125A flexible 20m cable in electric reeling system</li> </ul>
<b>SHORE POWER</b>	<ul style="list-style-type: none"> <li>○ 1 x 125A loose flexible 20m cable connected to Atlas 90 kVA-</li> </ul>

	SPA-II Series 50Hz, Input 180-530V 1- or 3-phase up to 90kVA
<b>MAIN ENGINE START SERVICE</b>	○ Battery Lead Acid
<b>GENERATOR START</b>	○ Battery Lead Acid
<b>CHARGERS</b>	○ Mastervolt 24v 50 amp
<b>CONVERTER</b>	○ Atlas converter 90 kVA-SPA-II Series 50Hz ○ Input 180-530V 1- or 3-phase up to 90kVA
<b>EMERGENCY HYDRAULICS</b>	○ Battery AGM ○ PTO Driven ○ Marine Air MCG V120 chilled water system to tropical specification
<b>AIR CONDITIONING</b>	○ 4 x 120000 BTU with quieter WhisperCool DC fans ○ 2 x Marine Air 54,000 BTU self-contained units in the engine room
<b>WATERMAKERS</b>	○ 1 x Idromar 375 litres / hour (upgrade) ○ 1 x Idromar 375 litres / hour (additional)
<b>WATER SYSTEM</b>	○ 1 x Octo marine water softener
<b>TOILET SYSTEM</b>	○ Tecma Silence Plus 220 Volt AC macerating toilets
<b>SEWAGE SYSTEM</b>	○ Ecomar 32 (3,200 litres/day) 230V 1-Phase 50Hz
<b>FUEL SEPARATOR</b>	○ 1 x Alfa Laval MIB303 fuel cleaning centrifugal separator 240V 1-phase 50 Hz 760 litres / hour
<b>COMPRESSED AIR SYSTEM</b>	○ Portable air compressor stored in E/R with AC 220V power supply
<b>7. NAVIGATION EQUIPMENT</b>	
<b>MAGNETIC COMPASS</b>	○ 1 x Ritchie
<b>GYRO COMPASS</b>	○ 1 x Sperry Marine Navigat MK2
<b>AUTOMATIC PILOT</b>	○ 1 x Simrad AP70
<b>ECHO SOUNDER</b>	○ 1 x Furuno FE800 Echo sounder 200 khz with 200B-8B transducer
<b>RADAR</b>	○ 1 x Furuno FAR2837S-BB S-Band 3GHz with 10' Open Scanner with Furuno processor RPU
<b>AIS</b>	○ 1 x Furuno FA170 Class A transponder with GPS and VHF antenna
<b>GPS/COMPASS</b>	○ 1 x Satellite Hemisphere GNSS V103 ○ 1 x Furuno GP170 GPS Navigator with GPS antenna

- CHART PLOTTER NAVTEX**
  - 1 x Transas Navi-Sailor 4000 ECDIS
  - 1 x Furuno NX700B
- LOG**
  - 1 x Sperry Naviknot 350E with FNFII through hull sensor
- WIND INSTRUMENTS**
  - Furuno Ultrasonic
- SEARCHLIGHTS**
  - 24v Sanshin
  - 1 x Furuno BR-500 watch alarm system
  - 1 x Flir M400XR stabilised thermal & daylight camera with tracking facility, installed on navigation mast to allow monitoring & tracking of chase boat
- CAMERAS**

## 8. COMMUNICATION EQUIPMENT

- SATCOM**
  - Panasonic PABX
  - 1 x Sailor 6222
  - 1 x Sailor 6204
- VHF**
  - 1 x Simrad RS90 Class D VHF/DSc with Handsets in Wheelhouse, Crew Mess & Emergency Steering Position
- TELEPHONE EXCHANGE**
  - Internal PABX
- INTERCOM**
  - Jotron Phontech 3100
  - 1 x Sailor 6310 MF/HF 150W Radio telephone
  - 1 x Sailor 6110 mini-C GMDSS
  - 1 x Furuno NX-700B
- MISCELLANEA**
  - 1 X McMurdo E5 EPIRB
  - 1 X McMurdoS4 SART
  - 2 x VSAT's on the mast for Internet, VOIP
  - 4G & GSM fitted

## 9. DECK EQUIPMENT

- ANCHOR WINDLASS**
  - Lewmar V10 hydraulic powered
- AFT WARPING CAPSTANS**
  - 2 x Lewmar C10 hydraulic
- ANCHORS**
  - 2 x Manson Kedge 210kg galvanised bow anchors, upgraded from standard
- ANCHOR CHAINS**
  - 19mm x 165m high tensile galvanized studlink chain
- BOAT CRANE & DAVITS**
  - Jet Ski overhead crane & chock system
- PASSERELLE**
  - 1 x 6.1m Besenzoni hydraulic upgraded heavy duty 3-stage telescopic stainless steel
- SIDE BOARDING LADDER**
  - Marquip

**SWIMMING  
PLATFORM**

- Hydraulically fall rise & tilt platform with 2,000kg maximum lift capacity

**AWNINGS**

- Over Jacuzzi, Sun Deck Aft & Bridge Deck Aft

**COVERS**

- Black Canvas

**UNDERWATER  
LIGHTS**

- 21 x White & Blue Lumishore LED

**10. ENTERTAINMENT EQUIPMENT****GENERAL**

- High-Tech AV system by "Yacht Intelligence"
- Controlled from Apple iPads (running a Crestron app) in each cabin and exterior areas
- Apple iPad controlled lighting and curtain blinds system throughout
- Each guest area can be controlled individually or as a complete 'party mode' throughout the vessel
- Satellite TV
- 4K Apple TV
- Movie Server
- Central Juke Box
- Party Mode
- Air Play
- Playstation PS4
- TV's in all guest cabins
- Bluetooth Wireless to the yachts audio system

**MAIN  
SALOON**

- 65" 4K OLED TV housed within a 'rise and fall' TV cabinet and with 5.1 surround sound

**DINING**

- 65" 4K OLED TV housed within a 'rise and fall' TV cabinet and with 5.1 surround sound

**SKYLOUNGE**

- 88" 4K OLED TV wall mounted with 5.2 surround sound system
- High Quality Audio System with 12 speakers and 2 sub-woofers

**SUNDECK**

- DJ Mixing Deck with input connection on the bar to the yachts speaker system
- RGB-W lighting system

**MASTER  
CABIN**

- 65" 4K OLED TV wall mounted with 5.1 surround sound

**GUEST  
CABINS**

- Samsung 40" UHD LED TV

**GALLEY**

- Fusion Stereo

**CAPTAIN'S  
CABIN**

- Sony 32" TV

**CREW**

- Fusion Stereo

**CREW MESS**

- Samsung 40" HD LED TV

**11. GALLEY & LAUNDRY EQUIPMENT**

**GALLEY**

- 4 x Frigoboat, 1,440 litres capacity each
- 2 x Frigoboat freezer with 646 litres capacity each
- 2 x Miele H6460BP single convection ovens
- 1 x 5-zone 900mm Miele KM6879 Induction hob
- 1 x Systemair KE 50-25-4230V 1-Phase 50Hz Extraction fan with Actionair AirShield
- 1 x Icemaker 22kg / day
- 1 x Miele ESW229X 29cm plate warming drawer
- 1 x Slimline 190 litre trash compactor
- 1 x Miele Dishwasher
- 1 x 132-bottle Wine cooler
- 1 x Miele Wine cooler on bridge deck

**STERN  
LAUNDRY**

- 2 x Miele Washing machine
- 2 x Miele Tumble dryer

**CREW  
QUARTERS**

- 1 x Miele Fridge
- 1 x Miele Dishwasher
- 1 x Miele Microwave

**12. SECURITY & SAFETY EQUIPMENT****SAFETY** ○ As required by RINA**SECURITY** ○ Refer to CCTV**FIRE  
FIGHTING**

- 2 x Gianneschi self primming fire pumps (1 x Emergency driven from separate diesel gen)
- 4 x Hydrant points with hose
- 1 x Fireboy-Xintex Fire alarm

**13. TENDERS & WATERSPORTS EQUIPMENT****TENDERS**

- 1 x Williams 565 Diesel Jet Tender (serviced 12/2020) with fueling station in garage

**WATER  
SPORTS**

- 2 x Sea-Doo RXP-X 300 with Venom Custom Tuning Package fitted with wave runner trackers linked to the vessels bridge navigation systems (serviced 12/2020)
- 2 x Sea Bob F5 SR

**DIVING**

- 1 x 300-bar pressure Dive / Ba compressor

**14. MAINTENANCE NOTE**

○ 2020:

- Main engines serviced in November 2020 at 1,000 hours, extended MTU EPC warranty (3 years or 3,000 hours)
- Generators serviced in November 2020
- Hull top sides polished in May 2020

**15. COMMENTS**

The 40m 2019 Sunseeker EXODUS is now offered for sale. She represents the most

competitively priced, recent model 131' available on the market today, turn-key and ready for the summer season.

A sleek and modern tri-deck yacht from the luxury British yard's popular 131 Series, EXODUS is currently in the yard undergoing routine maintenance and will relocate to the Monaco area towards the end of May.

Inside, EXODUS's opulent interiors have been custom designed and are made for entertaining. The main deck salon features floor-length windows that allow the area to be bathed in sunshine during the day, while the sky lounge can convert to a cinema room.

EXODUS can accommodate 10+2 guests across five cabins, including a full-beam Owner's suite on the main deck. There are also two doubles and two convertible twins on the lower deck, with an extra Pullman berth in each of the twin cabins.

RINA classed and MCA compliant, with her five-cabin layout, EXODUS is well positioned for the charter market and her MTU 12V 4000 M93L diesel engines come with extended warranty for three years or 3,000 hours.

EXODUS comes with a Williams 565 Diesel Jet tender, two Sea-Doo RXP-X300 and two Sea Bobs. She cruises at 12 knots and has a top speed of 21 knots.

- Key features:
  - Hull 15 of highly successful Sunseeker 131 series
  - Detailed specification with €3.5m of options
  - Under MTU extended warranty
  - Commercially registered with great charter potential
  - Turnkey for the season with all major services performed
  - Motivated seller following €3.6m price reduction over the last 4 months

## Исключения

---

При продаже яхты исключаются личные вещи владельца.

---

## Отказ от ответственности

---

Компания предоставляет описание судна или яхты добросовестно, но не может гарантировать точность этой информации, а также не ручается за техническое состояние. Покупатель должен проинструктировать своих агентов или оценщиков исследовать представленную информацию более подробно, по собственному желанию. Продажа судна или яхты, изменение цены или снятие с продажи будет происходить без предварительного уведомления.

# ФОТОГРАФИИ

**Main Salon 5460-HDR ©Jim Raycroft**



**Dining Salon 5448-HDR ©Jim Raycroft**



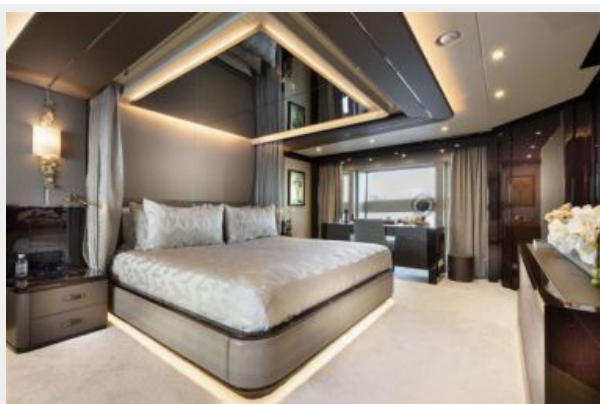
**Sky Lounge 5468 ©Jim Raycroft**



**Sky Lounge 5463 ©Jim Raycroft**



**Master 003-HDR ©Jim Raycroft**



**Master 013-HDR ©Jim Raycroft**





**Master 028-HDR ©Jim Raycroft**



**Master Bath 002-HDR ©Jim Raycroft**



**Master Bath 005-HDR ©Jim Raycroft**



**Guest Foyer 9944-HDR ©Jim Raycroft**



**Guest Port Aft 012-HDR ©Jim Raycroft**



**Guest Port Aft Bath 001 ©Jim Raycroft**



**Guest Stbd Aft 020-HDR ©Jim Raycroft**



**Guest Stbd Aft Bath 003-HDR ©Jim Raycroft**



**Guest Port Fwd 014-HDR-1 ©Jim Raycroft**



**Guest Port Fwd 035-HDR ©Jim Raycroft**



**Guest Port Fwd Bath 007-HDR ©Jim Raycroft**



**Guest Stbd Fwd 9928-HDR ©Jim Raycroft**

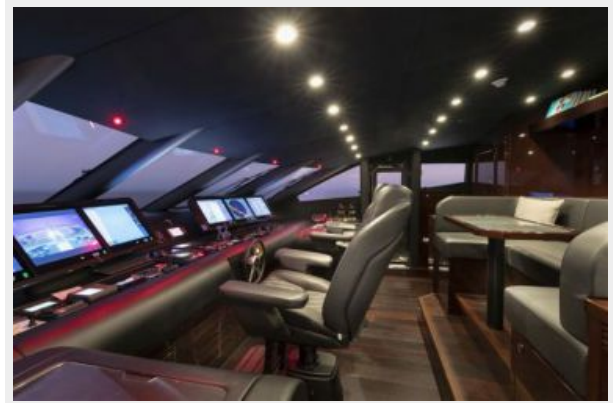




**Guest Stbd Fwd Bath 9932-HDR ©Jim Raycroft**



**Bridge 5494 ©Jim Raycroft**



**Dining 3244 ©Jim Raycroft**



**Sun Deck 3045 ©Jim Raycroft**



**Sun Deck 3286 ©Jim Raycroft**



**Sun Deck 3307 ©Jim Raycroft**



**Toys 5022 ©Jim Raycroft**



**Aerial\_5722\_©Jim\_Raycroft**



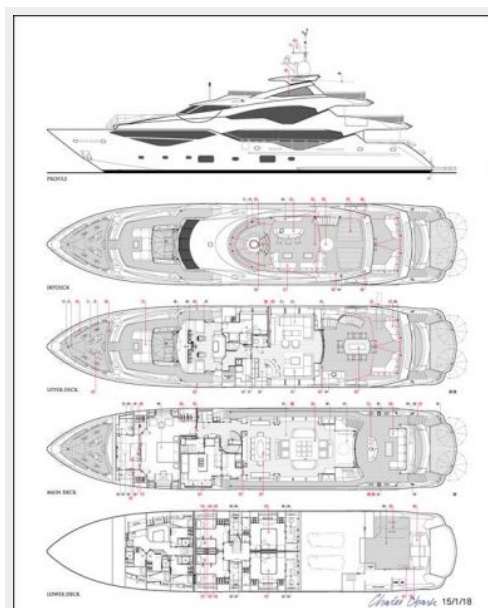
**Aerial\_5646\_©Jim\_Raycroft**



**Aerial 0319 ©Jim Raycroft**



**exodus ga 2020**



# КОНТАКТЫ

---

Андрей Шестаков (Andrey Shestakov) – ведущий яхтенный брокер отдела продаж яхт и судов компании Shestakov Yacht Sales Inc. Официальный представитель Shestakov Yacht Sales Inc. для русскоговорящих клиентов в центральном офисе компании в Майами/Форт Лодердейл/Флорида/США.

## Контактная информация

---

Email: [andrey@shestakovyachtsales.com](mailto:andrey@shestakovyachtsales.com)

Web: [shestakovyachtsales.com](http://shestakovyachtsales.com)

## Телефоны

---

Краснодарский край: **+7(918)465-66-44**

США, Майами, Флорида: **+1(954)274-4435**

## Время работы

---

Понедельник – Суббота: **9:00 - 21:00**  
EDT

Воскресенье: **Закрито**

## Адрес

---



Harbour Towne Marina, 850 NE 3rd St,  
STE 213, Dania, FL 33004