

SILVERTON CONVERTIBLE 40 — SILVERTON



Builder: SILVERTON

Year Built: 1988

Model: Cruising Yacht

Price: PRICE ON APPLICATION

Location: United States

LOA: 40' 0" (12.19m)

Beam: 14' 0" (4.27m)

Max Draft: 3' 10" (1.17m)

Our experienced yacht broker, Andrey Shestakov, will help you choose and buy a yacht that best suits your needs **Silverton Convertible 40 — SILVERTON** from our catalogue. Presently, at Shestakov Yacht Sales Inc., we have a wide variety of yachts available on our sale's list. We also work in close contact with all the big yacht manufacturers from all over the world.

If you would like to buy a yacht **Silverton Convertible 40 — SILVERTON** or would like help answering any questions concerning purchasing, selling or chartering a yacht, please call **+1(954)274-4435**

TABLE OF CONTENTS

TABLE OF CONTENTS	2
SPECIFICATIONS	5
Overview	5
Basic Information	5
Dimensions	5
Speed, Capacities and Weight	5
Accommodations	5
Hull and Deck Information	5
Engine Information	6
DETAILED INFORMATION	7
Disclaimer	7
Exclusions	7
Disclaimer	7
PHOTOS	8
2	8
3	8
4	8
5	8
6	8
7	8
8	9
9	9
10	9
11	9
12	9
13	9
14	10
15	10

16	10
17	10
18	10
19	10
20	11
21	11
22	11
23	11
24	11
25	11
26	12
27	12
28	12
29	12
30	12
31	12
32	13
33	13
34	13
35	13
36	13
37	13
38	14
39	14
40	14
41	14
42	14
43	14
44	15

CONTACTS	16
-----	-----
Contact details	16
-----	-----
Telephones	16
-----	-----
Office hours	16
-----	-----
Address	16
-----	-----

SPECIFICATIONS

Overview

This 40 ft Convertible is a one owner boat, with a history of being cared for. She is well laid out and large enough to be a live-aboard boat. Call for an appointment today.

Basic Information

Category: Cruising Yacht

Sub Category: Cabin Cruiser

Model Year: 1988

Year Built: 1988

Country: United States

Fly Bridge: Yes

Cockpit: Yes

Dimensions

LOA: 40' 0" (12.19m)

Beam: 14' 0" (4.27m)

Max Draft: 3' 10" (1.17m)

Speed, Capacities and Weight

Displacement: 23000 Pounds

Water Capacity: 100 Gallons

Holding Tank: 55 Gallons

Fuel Capacity: 300 Gallons

Accommodations

Total Cabins: 2

Total Heads: 1

Hull and Deck Information

Hull Material: Fiberglass

Engine Information

Engines: 2

Manufacturer: Crusader

Model: 7.4

Engine Type: Inboard

Fuel Type: Gas/Petrol

DETAILED INFORMATION

Disclaimer

The Company offers the details of this vessel in good faith but cannot guarantee or warrant the accuracy of this information nor warrant the condition of the vessel. A buyer should instruct his agents, or his surveyors, to investigate such details as the buyer desires validated. This vessel is offered subject to prior sale, price change, or withdrawal without notice.

Exclusions

Owner's personal belongings.

Disclaimer

The Company offers the details of this vessel or yacht in good faith but cannot guarantee or warrant the accuracy of this information nor warrant the condition of the vessel. A buyer should instruct his representatives, agents, or his surveyors, to investigate such details as the buyer desires validated. This vessel or yacht is offered subject to prior sale, price change, or withdrawal without notice.

PHOTOS

2



3



4



5



6



7



8



9



10



11



12



13



14



15



16



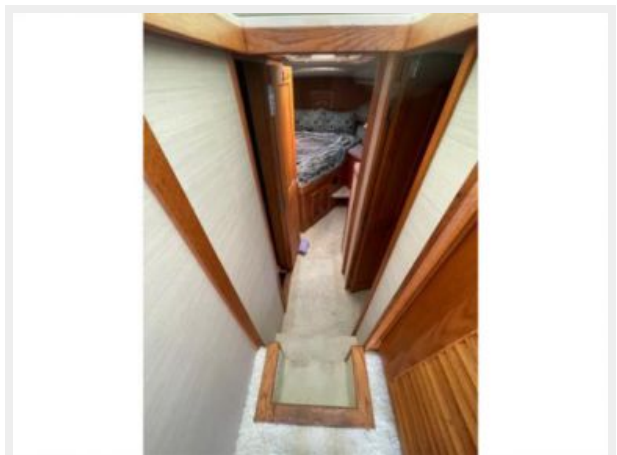
17



18



19



20



21



22



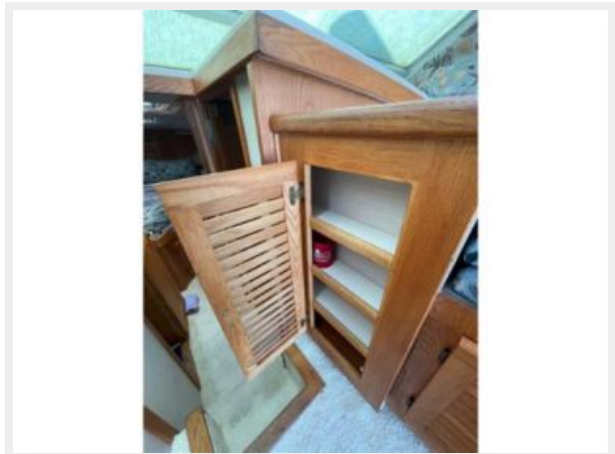
23



24



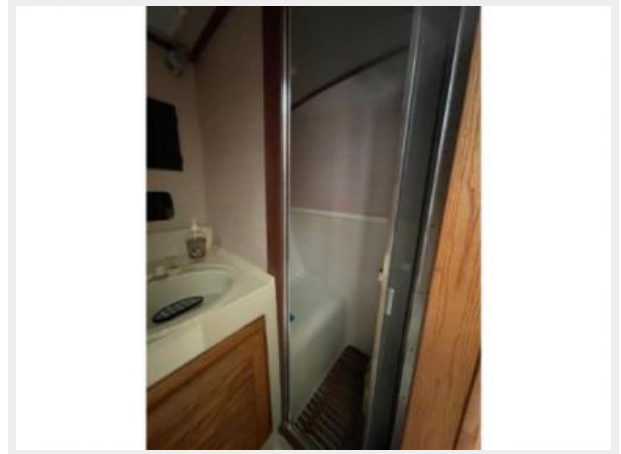
25



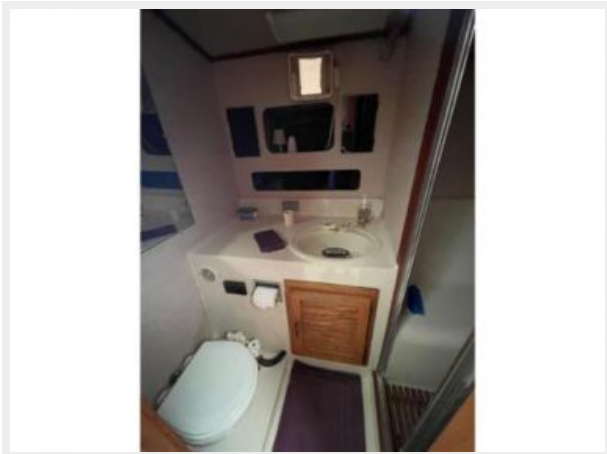
26



27



28



29



30



31



32



33



34



35



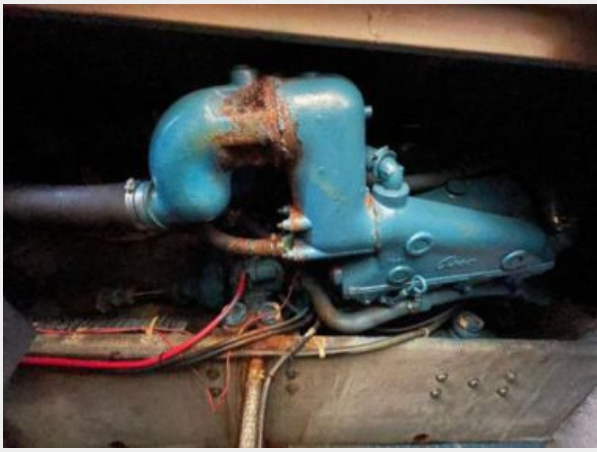
36



37



38



39



40



41



42



43



44



CONTACTS

Andrey Shestakov, leading yacht broker of the sales department of Shestakov Yacht Sales Inc. Shestakov Yacht Sales Inc., the official representative of the Miami/Fort Lauderdale FL headquarters.

Contact details

Email: andrey@shestakovyachtsales.com

Web: shestakovyachtsales.com/en/

Telephones

USA: +1(954)274-4435

Office hours

Monday – Saturday: **9:00 - 21:00** EDT

Sunday: **closed**

Address



Harbour Towne Marina, 850 NE 3rd St,
STE 213, Dania, FL 33004