

MORGAN 32 — MORGAN



Builder: MORGAN

Year Built: 1980

Model: Sloop

Price: PRICE ON APPLICATION

Location: United States

LOA: 32' 0" (9.75m)

Beam: 11' 5" (3.48m)

Max Draft: 4' 0" (1.22m)

Our experienced yacht broker, Andrey Shestakov, will help you choose and buy a yacht that best suits your needs **Morgan 32 — MORGAN** from our catalogue. Presently, at Shestakov Yacht Sales Inc., we have a wide variety of yachts available on our sale's list. We also work in close contact with all the big yacht manufacturers from all over the world.

If you would like to buy a yacht **Morgan 32 — MORGAN** or would like help answering any questions concerning purchasing, selling or chartering a yacht, please call **+1(954)274-4435**

TABLE OF CONTENTS

TABLE OF CONTENTS	2
SPECIFICATIONS	4
Overview	4
Basic Information	4
Dimensions	4
Speed, Capacities and Weight	5
Accommodations	5
Hull and Deck Information	5
Engine Information	5
DETAILED INFORMATION	6
Disclaimer	6
Exclusions	6
Disclaimer	6
PHOTOS	7
2	7
3	7
4	7
5	7
6	7
7	7
8	8
9	8
10	8
11	8
12	8
13	8
14	9
15	9

16	9
17	9
18	9
19	9
20	10
21	10
22	10
23	10
24	10
25	10
26	11
CONTACTS	12
Contact details	12
Telephones	12
Office hours	12
Address	12

SPECIFICATIONS

Overview

This 32 foot sailboat is a great boat for day sails or as a live aboard, from the Caribbean or up and down the Intracoastal waterway. Built in 1980 in Largo, Florida, this 32' Charlie Morgan sloop is classic fiberglass construction. With its hardy hull, and proper care from crew, she looks to sail another forty years. In her time on the water, this 32' Morgan known as Pelican has travelled the Caribbean, through the Panama Canal, and to the Sea of Cortez in Baja, California. In 2015, her current owner purchased Pelican in Tampa Bay, and after another round of sailing in the Caribbean, she's made Charleston her homeport. If you are looking for a laid-back harbor cruise, or are serious about sailing off, this 32 foot Morgan is an ideal boat to begin the journey.

BOAT SPECIFICS Length: 32' Draft: 4' Beam: 11.5' Displacement: 10,000lb

ACCOMODATIONS Comfortable salon, with two settees Ice Chest in the Galley V-Berth for storage or nap-time Fold-away table for meals. Full Head. Stereo with USB hookup. Navigation Station

AMENITIES This 32' Morgan currently lives off-the grid with a solar panel, a wind generator, and a battery bank – meaning she never has to plug-in, or even come to the dock, unless you want. Pelican also has all the necessary equipment for a safe and Coast Guard-approved day on the water, including: life vests, first aid kit, flares, navigation equipment, VHF radio, etc.

Basic Information

Category: Sloop

Model Year: 1980

Year Built: 1980

Country: United States

Dimensions

LOA: 32' 0" (9.75m)

Beam: 11' 5" (3.48m)

Max Draft: 4' 0" (1.22m)

Speed, Capacities and Weight

Displacement: 10000 Pounds

Fuel Capacity: 27 Gallons

Accommodations

Total Cabins: 2

Total Heads: 1

Hull and Deck Information

Hull Material: Fiberglass

Engine Information

Engines: 1

Manufacturer: Yanmar

Model: 3GM30F

Engine Type: Inboard

Fuel Type: Diesel

DETAILED INFORMATION

Disclaimer

The Company offers the details of this vessel in good faith but cannot guarantee or warrant the accuracy of this information nor warrant the condition of the vessel. A buyer should instruct his agents, or his surveyors, to investigate such details as the buyer desires validated. This vessel is offered subject to prior sale, price change, or withdrawal without notice.

Exclusions

Owner's personal belongings.

Disclaimer

The Company offers the details of this vessel or yacht in good faith but cannot guarantee or warrant the accuracy of this information nor warrant the condition of the vessel. A buyer should instruct his representatives, agents, or his surveyors, to investigate such details as the buyer desires validated. This vessel or yacht is offered subject to prior sale, price change, or withdrawal without notice.

PHOTOS

2



3



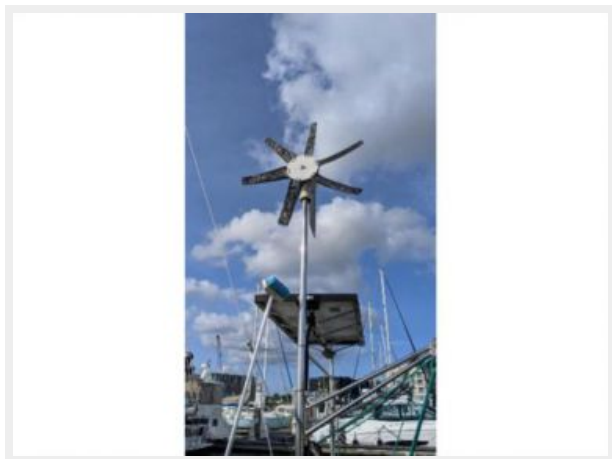
4



5



6



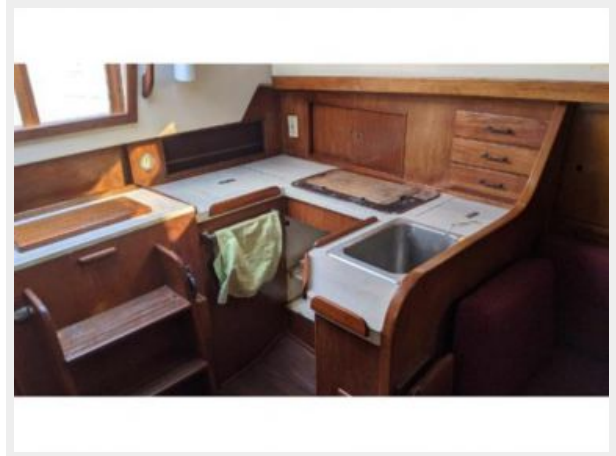
7



8



9



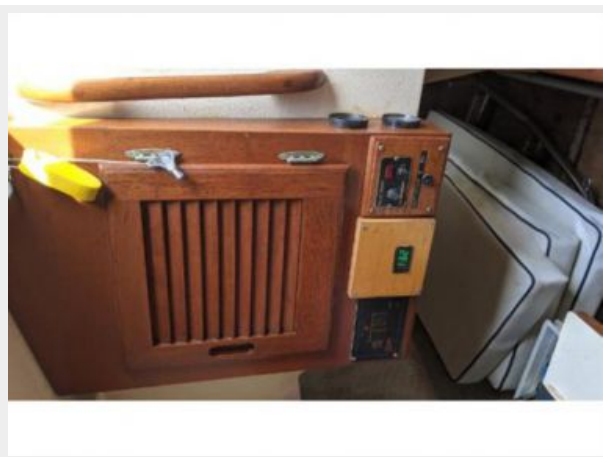
10



11



12



13



14



15



16



17



18



19



20



21



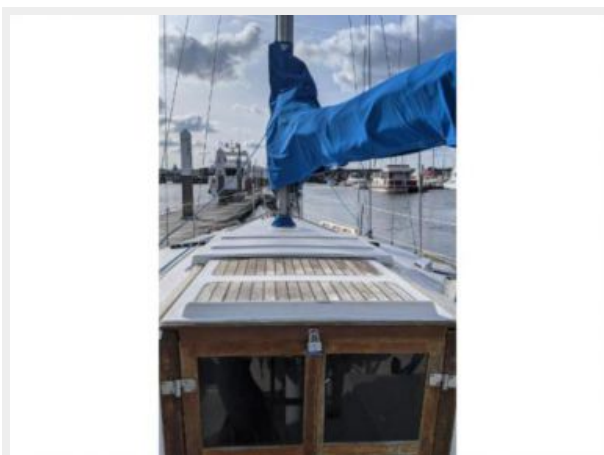
22



23



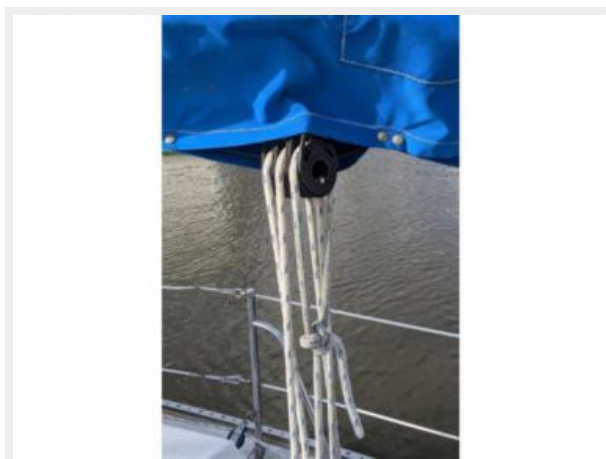
24



25



26



CONTACTS

Andrey Shestakov, leading yacht broker of the sales department of Shestakov Yacht Sales Inc. Shestakov Yacht Sales Inc., the official representative of the Miami/Fort Lauderdale FL headquarters.

Contact details

Email: **andrey@shestakovyachtsales.com**

Web: shestakovyachtsales.com/en/

Telephones

USA: **+1(954)274-4435**

Office hours

Monday – Saturday: **9:00 - 21:00 EDT**

Sunday: **closed**

Address



Harbour Towne Marina, 850 NE 3rd St,
STE 213, Dania, FL 33004