

SWEET ESCAPE — CHRISTENSEN



Судостроитель: CHRISTENSEN

Год постройки: 1993

Модель: Моторная яхта

Цена: ЦЕНА ЯХТЫ ПО ЗАПРОСУ

Местонахождение: United States

Длина общая: 130' 0" (39.62m)

Ширина: 26' 7" (8.10m)

Макс. осадка: 6' 11" (2.11m)

Крейс. скорость: 13 Kts. (15 MPH)

Макс. скорость: 19 Kts. (22 MPH)

Купить **SWEET ESCAPE — CHRISTENSEN** а также выбрать подходящую вам яхту из нашего каталога яхт вам поможет опытный яхтенный брокер Андрей Шестаков. На сегодняшний день компания **Shestakov Yacht Sales Inc.** имеет большое количество яхт в собственном списке продаж, а также тесно сотрудничает со всеми крупными яхтенными производителями по всему миру.

Для того чтобы купить яхту **SWEET ESCAPE — CHRISTENSEN** а также проконсультироваться по любому вопросу связанному с покупкой, продажей, чартером яхт позвоните по телефону **+7(918)465-66-44**.

ОГЛАВЛЕНИЕ

ОГЛАВЛЕНИЕ	2
ХАРАКТЕРИСТИКИ	3
Обзор	3
Основная информация	3
Размеры	3
Скорость, вместимость и масса	3
Размещение	4
Корпус и палуба	4
Информация о двигателе	4
ПОДРОБНОЕ ОПИСАНИЕ	5
WALKTHROUGH	5
INDOOR / OUTDOOR DINING	6
RECENT UPGRADES 2017-PRESENT	6
TENDERS AND TOYS	8
TENDERS AND TOYS DISCLAIMER	9
DISCLAIMER	9
Исключения	9
Отказ от ответственности	9
ФОТОГРАФИИ	10
КОНТАКТЫ	14
Контактная информация	14
Телефоны	14
Время работы	14
Адрес	14

ХАРАКТЕРИСТИКИ

Обзор

"SWEET ESCAPE" is a 130' Christensen Tri-Deck Motor Yacht with 6 staterooms comfortably accommodating 12 guests. She recently underwent an extensive multi-million dollar refit and there have been several recent price reductions.

Her exceptional tri-deck 6 stateroom layout offers the space and amenities of a superyacht, but at a fraction of the cost.

Vessel Highlights

Main engines have 100 hours since major overhaul

2 New 85kw Northern Lights Generators

Major multi-million dollar refit in 2018 and 2019

Recent \$1,250,000 price reduction

7 Weeks of Charter are on the books between now and January 2022

Consistent Strong Charter Revenue Stream

Основная информация

Тип судна: Моторная яхта

Подкатегория: Tri-Deck

Модельный год: 1993

Год постройки: 1993

Год обновления: 2018

Страна: United States

Размеры

Длина общая: 130' 0" (39.62m)

Ширина: 26' 7" (8.10m)

Макс. осадка: 6' 11" (2.11m)

Скорость, вместимость и масса

Крейс. скорость: 13 Kts. (15 MPH)

Макс. скорость: 19 Kts. (22 MPH)

Вместимость воды: 1112 Gallons

Объем топливного бака: 9400 Gallons

Размещение

Всего кают: 6

Спальные места: 12

Всего ком. состава: 8

Корпус и палуба

Материал корпуса: Fiberglass

Информация о двигателе

Двигатели: 2

Производитель: Caterpillar

Модель: C-32

Тип двигателя: Inboard

Тип топлива: Diesel

ПОДРОБНОЕ ОПИСАНИЕ

WALKTHROUGH

Entering from starboard on Sweet Escape, one will reach a formal foyer with teak finished floors. There is also a well-appointed day head in this area. Moving aft from the foyer, one will enter the formal dining area. The dining table can be set to accommodate 12 guests. The main salon is appointed with beautiful furnishings, shaped settee, two comfortable swivel chairs, end table, a coffee table and ottomans.

The main salon and dining area have ample storage with built in serving areas. Forward to port is the state of the art galley with professional appliances, excellent counter space, storage, and refrigeration.

One of the best features is the Island Counter and there is also plenty of natural light coming through the large galley windows.

Forward of the galley is a large pantry providing more storage and also acts as a buffer to eliminate noise from the galley to the on deck VIP. The on deck full beam VIP en suit has a king sized berth, closet, desk/vanity, and sitting area.

Amidship stairs lead down to the 5 well-appointed staterooms below.

The full beam master is found forward with a king size berth, desk/vanity, settee to starboard, walk in closet and His and Hers bathroom. Hers with tub and shower and his with shower.

Moving aft from the master you will find the remaining 4 guest cabins. The large lower VIP cabin has a king berth and three other two twin cabins twin cabins can convert to king berths, and finally the 6th stateroom has two adjacent bunk beds.

All cabins have the best entertainment systems, are well appointed, and have ample storage.

From the formal foyer one will go up a spiral staircase to the upper landing that will take one aft to the sky lounge or forward to the pilothouse.

The pilothouse has the state of the art navigation equipment and there are three raised helm chairs. One can reach the spacious captain's cabin from this area. There are ample walk around side decks with pilothouse entry doors allowing for easy movement around the deck and the entire vessel.

Aft from the upper landing one enters into the sky lounge where you are surrounded by full length windows offering excellent views and natural light. There is a bar with five bar stools to starboard, a settee with end tables, two chairs and a coffee table to port. The sky lounge table to port. The sky lounge is a beautiful area for entertaining, watching movies, or hanging out at the bar. There is also a recently remodeled day head on this deck.

Moving aft from the sky lounge through the large double sliding doors, one will enter the boat deck. Here you will find a beautiful built in service area and tables with seating for 12 to dine outside. From this area one can go up another set of stairs to the sundeck. The sundeck features a large sun pad and Jacuzzi.

Moving back down to the aft deck, one can enter the main salon through the glass doors. This beautiful and spacious aft deck features deck features a large teak table that seats 12 guests. There is a built in settee with a table. There is a wet bar with granite counter tops, sink, and refrigerator. The aft deck is designed to be well protected from the elements by its overhang and optional eisenglass enclosure.

From the aft deck one can go down a set of stairs to a large hydraulic swim platform that makes for easy access to the water for swimming or any water sports.

INDOOR / OUTDOOR DINING

Aft deck

The aft deck offers fully covered dining for 12 featuring a wet bar with refrigerator, sink, and retractable 55 inch HDTV with access to the central satellite receiver, movie server, and surround sound cinema. The aft deck can be enclosed with eisenglass and includes heating/air conditioning. There is a passerelle for Med-style boarding and wide walk around decks leading to the bow.

Swim Platform

Accessed on the starboard side, the hydraulically operated swim platform has a rain shower head and underwater lighting with easy access to Sweet Escape's custom inflatable toy dock.

Salon

The voluminous salon has ample seating areas and expansive headroom creating the feel of a much larger yacht. Within the salon there is a game table for 6 guests, Control4 lighting and entertainment system with a 75 inch HDTV accessing the central satellite receiver, central movie server, Bluetooth audio, 7.2 cinema surround sound, PlayStation 4, wine wall, piano and a stylish day head.

Formal Dining

Adjacent to the main salon, the formal dining area has an extendable rectangular dining table, which comfortably seats up to 12 guests.

Portuguese Bridge

A charming private space to enjoy spectacular views, this magnificent semicircular seating area has a new dining table which accommodates up to 12 guests for alfresco dining.

Sky Lounge on Bridge Deck

Located on the bridge deck, the sky lounge features a marvelous full bar with swivel bar stool seating for 5. Sofa, chairs, and stools add an additional 7 plus seats. This comfortable lounge area is the perfect spot to unwind after a fun filled day, with a 60 inch HDTV, surround sound, access to central satellite receiver, and movie server, Bluetooth audio, and a convenient day head.

Bridge Deck Aft

This multipurpose area benefits from full sun but includes a variety of sun-shade arrangements.

Features include alfresco dining for up to 12 guests four sun loungers, lounge seating for up to 12, two large parasols, and access to the sundeck and Portuguese bridge.

Sun Deck

A sun worshiper's dream with sensational panoramic views, port, and starboard settee seating, a 6–8 person Jacuzzi, over sized sun pad, BBQ and a variety of shade configurations.

RECENT UPGRADES 2017-PRESENT

Major overhaul Caterpillar C-32 service scheduled September, 2020

- (2) New 85kw Northern Lights generators (2020)

- New davit on the bow (2018)
- New hydraulic platform on stern (2018)
- (3) New AC chillers and newducting (2018)

Updates in the Salon 2017- 2018

- New wall coverings, new carpet, new headliners, new LED lighting, new audio visual, new soft goods, and new furnishings
- New electric blinds and shades
- New 75 inch Sony TV
- New Ronald self playing piano
- New recessed tray ceiling with LED lighting
- New Smart Home Theater System which functions throughout the entire vessel
- New 7.2 Surround sound system
- New glass enclosed wine rack with climate control and rope lighting
- New Swarovski crystal drop lighting above the formal dining area

Updates in the Galley 2017-2018

- (2) New Mielie commercial full size freezers
- (2) New Miele commercial full size refrigerators
- (1) New Miele chest freezer
- (2) New Mielie commercial ovens
- New Viking commercial range oven
- (1) Mielie hot stone grille
- New Mielie dishwasher
- (2) New Perlick freezer drawers
- New Sharp microwave
- New Polyscience chamber vacuum sealer
- New Thermomix

Updates in the Sky Lounge 2017-2018

- New wine cooler New Refrigerator
- New carpet, wall coverings, headliners, and LED lighting
- New 60 inch HDTV
- New 5.1 surround sound

Updates in the Bridge and Sundeck 2017-2018

- (3) New custom sun shades
- New stainless grill
- New exterior sun pads and upholstery
- New Led Lighting and outdoor speakers

Updates at Helm 2017-2018

- New Garmin chart plotter 17 inch 8000 series
- New Fusion UD650
- New Ships computer with updated Navionics software
- New Satellite TracVision HD 11
- New TracPhone V7IP
- New Garmin Doppler Radar
- Rebuilt both wing stations and added new equipment

More updates 2017-2018

- New Atlas shore power 75kw
- New Sewage treatment ECOMAT
- New Head Hunter system
- All Hydraulic Systems were rebuilt and serviced
- New Scotsman commercial Ice maker
- Air Conditioning added to the engine room

TENDERS AND TOYS

39' Nortech with Triple 300hp Mercury Verados

19' AB Tender with 150hp Four Stroke Yamaha

(2) Yamaha Jet Skis

(1) Seadoo Jet Ski with Fly board Giant Water Slide Inflatable Dock
Hydraulic Swim Platform with boarding ladder & Rain shower

(4) Seabobs (underwater scooters) F5 models

(2) 2-person kayak

(2) Stand up paddle boards (SUPs)

Snorkel gear for 12 Water skis

Wakeboard

Knee Board

Water golf with tee off pad and eco golf balls

Fishing gear

Exercise equipment

SCUBA for certified divers only

Dive Hookah Sun Deck Jacuzzi and BBQ

PlayStation 4

Board Games

Movie Server with 750+ Control4 home entertainment system

VSAT internet

Outdoor cinema set up with retractable television aft deck

DJI Maverick Pro drone camera and GoPro Hero 5

TENDERS AND TOYS DISCLAIMER

Tenders and toys are not included, but can be negotiated at time of sale.

DISCLAIMER

The company offers the details of this vessel in good faith but cannot guarantee or warrant the accuracy of this information nor warrant the condition of the vessel. A buyer should instruct his agents, or his surveyors, to investigate such details as the buyer desires validated. This vessel is offered subject to prior sale, price change or withdrawal without notice.

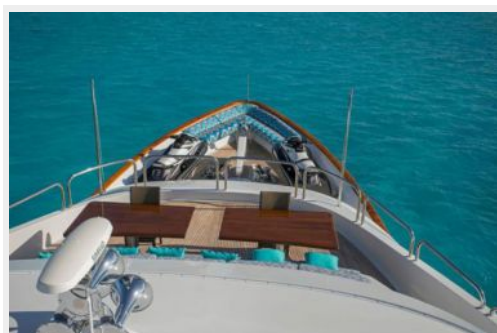
Исключения

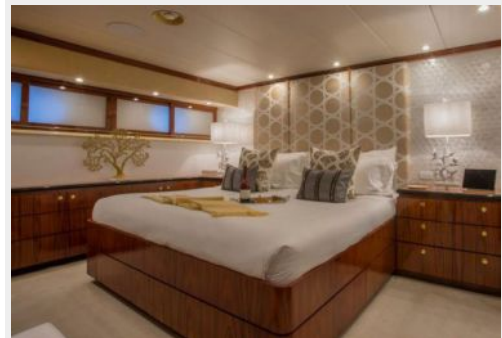
При продаже яхты исключаются личные вещи владельца.

Отказ от ответственности

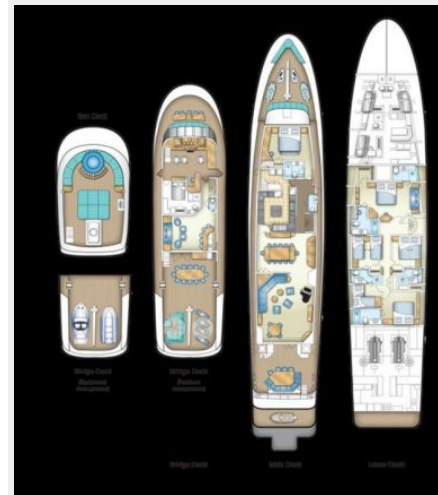
Компания предоставляет описание судна или яхты добросовестно, но не может гарантировать точность этой информации, а также не ручается за техническое состояние. Покупатель должен проинструктировать своих агентов или оценщиков исследовать представленную информацию более подробно, по собственному желанию. Продажа судна или яхты, изменение цены или снятие с продажи будет происходить без предварительного уведомления.

ФОТОГРАФИИ









КОНТАКТЫ

Андрей Шестаков (Andrey Shestakov) – ведущий яхтенный брокер отдела продаж яхт и судов компании Shestakov Yacht Sales Inc. Официальный представитель Shestakov Yacht Sales Inc. для русскоговорящих клиентов в центральном офисе компании в Майами/Форт Лодердейл/Флорида/США.

Контактная информация

Email:
andrey@shestakovyachtsales.com

Web: shestakovyachtsales.com

Телефоны

Краснодарский край: **+7(918)465-66-44**

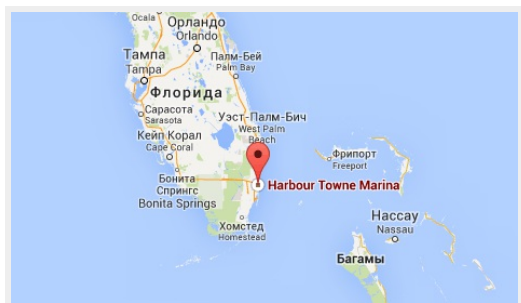
США, Майами, Флорида: **+1(954)274-4435**

Время работы

Понедельник – Суббота: **9:00 - 21:00**
EDT

Воскресенье: **Закрито**

Адрес



Harbour Towne Marina, 850 NE 3rd St,
STE 213, Dania, FL 33004