

ENDLESS LOVE — LAZZARA



Builder: LAZZARA

Year Built: 2009

Model: Motor Yacht

Price: PRICE ON APPLICATION

Location: United States

LOA: 84' 0" (25.60m)

Beam: 20' 1" (6.12m)

Max Draft: 4' 6" (1.37m)

Cruise Speed: 28 Kts. (32 MPH)

Max Speed: 32 Kts. (37 MPH)

Our experienced yacht broker, Andrey Shestakov, will help you choose and buy a yacht that best suits your needs **ENDLESS LOVE — LAZZARA** from our catalogue. Presently, at Shestakov Yacht Sales Inc., we have a wide variety of yachts available on our sale's list. We also work in close contact with all the big yacht manufacturers from all over the world.

If you would like to buy a yacht **ENDLESS LOVE — LAZZARA** or would like help answering any questions concerning purchasing, selling or chartering a yacht, please call **+1(954)274-4435**

TABLE OF CONTENTS

TABLE OF CONTENTS	2
SPECIFICATIONS	5
Overview	5
Basic Information	5
Dimensions	5
Speed, Capacities and Weight	5
Accommodations	5
Hull and Deck Information	6
Engine Information	6
DETAILED INFORMATION	7
Overview	7
Main Salon	8
Dining Area	8
Galley and Laundry Equipment	8
Master Stateroom	9
Port VIP Stateroom	10
Starboard VIP Stateroom	10
Guest Stateroom, Forward Port	10
Guest Stateroom, Forward Bow	11
Crew Quarters	11
Pilothouse Electronics and Equipment	11
Flybridge Electronics	11
Flybridge	12
Deck Equipment	12
Aft Deck Equipment	13
Mechanical Equipment	13
Tender	15
Recent Upgrades and Service	15

Exclusions	15
Disclaimer	15
PHOTOS	16
Salon	16
Salon	16
Salon Looking Aft	16
Dining Area	16
Dining Area	16
Galley	16
Galley	17
Dinette in Galley	17
Lower Helm	17
Lower Helm	17
Lower Helm	17
Galley Looking Aft	17
Master Stateroom	18
Master Stateroom	18
Master Stateroom	18
Master Stateroom	18
Master Bath	18
Companionway	18
Port VIP Stateroom	19
Port VIP Bath	19
Starboard VIP Stateroom	19
Forward Port Guest Stateroom	19
Guest Bath	19
Forward Bow Guest Stateroom	19
Guest Bath	20
Laundry Area	20

Flybridge	20
Flybridge Bar	20
Flybridge Dining	20
Flybridge	20
Upper Helm	21
Upper Helm	21
Flybridge	21
Sun Deck Seating	21
Side Deck	21
Foredeck	21
Aft Deck	22
Aft Deck	22
Aft Deck	22
Stern	22
Engine Room	22
Engine Room	22
Engine Room	23
Captain's Cabin	23
Captain's Head	23
Stern	23
Stern	23
Port Bow Profile	23
Port Stern Profile	24
CONTACTS	25
Contact details	25
Telephones	25
Office hours	25
Address	25

SPECIFICATIONS

Overview

Motor yacht ENDLESS LOVE is an 84' / 25.60m luxury yacht for sale, built and launched by yacht builder Lazzara. Delivered to a knowledgeable yacht owner in 2009, this luxury yacht sleeps up to 10 guests in 5 ensuite staterooms and has accommodations for 3 crew.

Basic Information

Category: Motor Yacht

Model Year: 2009

Year Built: 2009

Country: United States

Fly Bridge: Yes

Dimensions

LOA: 84' 0" (25.60m)

Beam: 20' 1" (6.12m)

Max Draft: 4' 6" (1.37m)

Speed, Capacities and Weight

Cruise Speed: 28 Kts. (32 MPH)

Max Speed: 32 Kts. (37 MPH)

Water Capacity: 400 Gallons

Holding Tank: 200 Gallons

Fuel Capacity: 2000 Gallons

Accommodations

Total Cabins: 5

Sleeps: 10

Total Heads: 7

Crew Cabin: 2

Crew Sleeps: 3

Hull and Deck Information

Hull Material: Fiberglass

Hull Configuration: Semi-Displacement

Engine Information

Engines: 2

Manufacturer: Caterpillar

Model: C32

Engine Type: Inboard

Fuel Type: Diesel

DETAILED INFORMATION

Overview

Stepping onboard the aft deck, there is seating for nine surrounding a gorgeous varnished teak dining table. Here you will also find a bar well-equipped with a sink, refrigerator, and icemaker. Entering the salon, you'll find a very spacious seating area with a modern design, dark walnut cabinetry, hardwood flooring plenty of natural light coming through the large teardrop windows. There is a staircase on the starboard side that leads from the main salon to a full-beam master stateroom along with two VIP guest staterooms, all with ensuite heads. Forward from the salon is a formal dining area with seating for six guests. Moving forward there is a convenient day head and the Country Kitchen galley that remains a gathering favorite. This area is also equipped with a lower helm along with access to the starboard side deck through the sliding door. The forward stairs lead to two separate guest staterooms also with ensuite heads and a washer/dryer.

Next, head up the inside staircase to a very spacious flybridge where you will find plenty of seating, a well-equipped bar with ice maker, refrigerator/freezer, and a grill that is perfect for entertaining. Forward is the upper helm with two raised Stidd chairs and plenty of visibility. There is also a starboard side hot tub with a cushioned top cover when not in use. Moving aft of the hardtop you'll find generous space for tender storage with a 1500 lb. davit.

Crew quarters are entered thru the transom door which consists of the Captain's cabin with a full-size berth and a second cabin with a single berth, and a shared head. Through here you can also access the walk-in engine room. She is also equipped with a hydraulic platform that makes launching the tender a breeze.

Key Features

- 2000-hour CAT service completed with FIVE YEAR WARRANTY
- Full exterior paint job (2018)
- New Garmin electronics installed
- Dive compressor installed
- All windows/topsides pulled, re-bedded, and sealed
- New exterior soft goods
- Generators fully serviced
- Aft deck bar unit
- New enclosures

- FLIR
- Many extra parts including spare props

Main Salon

- High-gloss Walnut interior (In lieu of standard Cherry finish)
- Sofa with storage
- (3) End tables and lounge chairs
- Coffee table
- Custom window treatments
- Recessed ceiling low-voltage LED lighting
- Direct and Indirect LED lighting
- Double stainless steel curved sliding glass doors to aft deck
- Majilite overhead panels with foam backing
- Telephone outlet
- 120 Volt receptacles
- Surround sound stereo/CD/DVD player
- 42" LCD HDTV
- Denon Receiver
- Direct TV HDTV receiver
- Side Windows 3/8" laminated and chemically strengthen (recently inspected and all seals replaced new)

Dining Area

- Overhead ceiling treatment
- Oval table w/ seating for 6 guests
- Walnut credenza on a mirrored forward bulkhead
- Ample storage for stemware and flatware

Galley and Laundry Equipment

- Walnut wood plank flooring
- Custom "Country Kitchen" styled with Island sink arrangement
- Built-in pantry
- Skylight with chemically strengthened glass
- Brushed stainless steel appliances
- Side by side refrigerator/freezer
- 27" 4-burner oven
- Electric range w/ built in cooktop
- Microwave/convection oven

- Dishwasher
- Trash compactor
- Grohe double stainless steel sink and single lever faucet with sprayer and instant hot water dispenser
- Additional 3 drawer refrigerator/freezer drawers to starboard
- Wine cooler/chiller, plus ice-maker
- Walnut cabinets with an island in high gloss white
- Recessed LED lighting
- Raised dinette with curved seating for 6 guests
- Granite countertop
- Large storage locker accessed from top of dash
- (3) Forward windows (windshield) trimmed window mullions in Walnut
- Majilite overhead panels w/ foam backing
- Stairwell down to forward staterooms
- 20" LCD TV wall bracket mounted, ceiling mounted speakers, plus subwoofer
- Starboard sliding door to side deck

Laundry Equipment

- Washer (2) forward and Aft Locations, Bosch, Full size
- Dryer (2) Forward and Aft Locations, Bosch, Full size

Master Stateroom

- Walk-around King-size bed with custom mattress, padded headboard and storage
- Walnut veneered nightstands
- Port and starboard Walnut veneered armoires
- Port and starboard built-in settee, upholstered love seat
- Desk w/ seating
- Overhead ceiling treatment
- Walk-in closet w/wood valance
- Private mounted safe
- Direct and indirect lighting
- (2) Fixed elliptical port lights
- Private access to master head
- Decorative sconces
- Telephone and electrical outlets
- Separate storage/luggage closet accessed from closet
- Carpet
- 42" LED TV, Denon All-In-One Surround sound w/DVD, high-definition SAT receiver, ceiling mount speakers, and sub-woofer

Port VIP Stateroom

- Queen size walk-around berth
- Padded Headboard
- Wood bed base with storage drawers below
- Walnut wood throughout
- Walnut veneered LG 15" flatscreen TV
- Outboard storage/stereo cabinets and open shelving with mirror
- Denon All-in-one Surround sound processor CD/DVD, high-definition stereo system, independent SAT receiver, IR Controlled
- Ceiling mount speakers
- Neutral beige plush carpeting
- Hanging Cedar-lined closet with mirror door
- Indirect lighting
- Fixed elliptical port light
- Private access en-suite head

Starboard VIP Stateroom

- Queen size walk-around berth
- Padded Headboard
- Wood bed base with storage drawers below
- Walnut wood throughout
- Walnut veneered LG 15" flatscreen TV
- Outboard storage/stereo cabinets and open shelving with mirror
- Denon All-in-one Surround sound processor CD/DVD, high-definition stereo system, independent SAT receiver, IR Controlled
- Ceiling mount speakers
- Neutral beige plush carpeting
- Hanging Cedar-lined closet with mirror door
- Indirect lighting
- Fixed elliptical portlight
- Private access en-suite head

Guest Stateroom, Forward Port

- Full-size berth with storage below
- Walnut veneered wood through out
- Neutral beige plush carpeting
- Dresser/desk cabinet with chair
- Indirect lighting
- Hanging Cedar lined closet with mirrored door

- LG 15" flatscreen TV, Denon stereo with DVD/CD/SAT receiver
- Telephone/computer outlets
- Private access to en-suite head

Guest Stateroom, Forward Bow

- Upper and lower berths with drawer storage below
- Walnut veneered throughout
- Neutral beige plush carpeting
- Hanging Cedar lined closet with mirrored door
- Private access to en suite head
- LG 15" flat-screen TV, Denon stereo with DVD/CD/SAT receiver

Crew Quarters

- Captain's cabin has a full-size berth
- Crew cabin has a single berth
- Walnut veneered wood throughout
- Storage
- LG 15" flat screened TV, flush-mounted, Denon stereo with DVD/CD/SAT receiver
- Shared Head

Pilothouse Electronics and Equipment

- GARMIN GPS map 7612 /14" display
- 14" LCD display to provide video display of the "ISIS System", CCTV
- Electronic engine controls w/clutches, throttles, and bow and stern thrusters
- Elbex dome camera
- Simrad AP25 autopilot
- Simrad D RS87 GMDSS radiotelephone
- Simrad AR78 compass
- B&G HS2000 speed/depth/temp hydra system
- B&G wind and speed indicator
- ACR 406 category 1, Class 1 EPIRB
- SATCOM
- KVH F-55 Tracphone Immarsat Fleet Satellite System (provides voice and internet both in MPDS and HSD wireless access throughout boat)
- (3) Wipers with controls

Flybridge Electronics

- (3) Large Garmin monitors
- TRAC Stabilizer controls
- CAT Marine Power monitors
- Electronics engine controls w/clutches, throttles, and bow/stern thruster
- Simrad AR 78 compass
- FLIR Controls
- Simrad AP 25 autopilot
- Icom 504
- ISIS monitoring system
- SAT radio
- Simrad RS87 GMDSS radio telephone
- B&G HS 2000 speed/depth/temp/system
- ACR 406 cat. Class 1 EPIRB

Flybridge

- Fully instrumented helm console
- Custom designed 316 stainless steel framed windscreen
- One Stidd single helm chair
- One Stidd double helm chair
- Back up emergency engine controls
- Access to aft deck via molded fiberglass stairway with handrail
- Sliding hatch/stairs to interior main deck level
- Outboard seating group, split into port and starboard sections with varnished Teak tables for each section
- Peninsula shaped bar with varnished Teak top, sink, and electric grill on the port side
- Refrigerator under aft bar counter
- (3) Swivel stools at the bar
- Varnished Teak counter, forward of the bar on the port side with ice-maker underneath
- Jacuzzi tub with sun pad lounging area over top of tub
- Storage for yacht dinghy
- 1500 lb capacity Hydraulic Davit with remote control, starboard side concealed into styling line, with telescopic and power rotation features
- Stainless steel dingy chocks convert to aft bridge deck guard rails
- Freshwater washdown
- Life raft in storage compartment port aft behind Jacuzzi

Deck Equipment

- Duel Maxwell electric, vertical windlasses with chain stopper and wash down
- Duel stainless steel anchor chutes
- (2) Stainless steel 80 lbs anchors

- 200 ft and (1) 100 ft anchor rode and chain 3/8" BBB high test hot galvanized steel
- Stainless steel rails along main deck
- Hinged rails forward for side boarding
- Bow, spring, stern cleats, stainless steel, custom-designed
- Lighted foredeck, with sun pad, pneumatically assisted opening w/storage underneath
- Deck fills, water and waste removal
- Fuel fill aft
- Burgee staff, custom fabricated stainless steel with burgee flag
- Foredeck washdown
- Hawse pipes with stainless steel guideposts
- Dockside water connection, (1) forward, (1) aft
- Forward hatch to bow chain
- Sunbrella weather covers

Aft Deck Equipment

- Docking controls, starboard side
- Varnished Teak table
- Built-in seating
- Teak caprail, with stainless steel standoffs above settee seat back
- Engine removal hatch
- Access to transom and hydraulic swim platform
- Aft deck bulworks
- Access to flybridge via molded fiberglass stairwell
- Hinged glass w/wood boarding doors, port and starboard
- Lighting and speakers under hardtop
- Access to walk around fiberglass decks
- Teak aft deck and swim platform, and stairs to flybridge
- Telephone outlet
- Mounted camera
- Custom designed stainless steel cleats with stainless hawsers
- Fresh air engine intake vents
- Stainless steel hardtop compression posts
- Dockside water connection
- 20" LCD TV enclosed and mounted over bar
- Custom hydraulic swim platform
- Access to captain and crew quarters
- Access to shore power inlet
- Hydro Platform
- Starboard side dock station

Mechanical Equipment

- Twin Caterpillar C32 diesel engines, 1650HP each
- Extended warranties on engines until 2025
- Fresh water-cooled w/reduction ZF gears /2.467:1 ratio
- (2) Onan 27.5 KW 240VAC/60Hz single phase generators, with sound enclosures
- Engine fitted with alternator and muffler
- American TRAC hydraulic stabilizers with (2) fins, 20 HP
- Mechanical gauges on engines
- Underwater engine exhausts with idle by-pass
- 220 Volt compressors with receiver tank for toilets and sumps
- Bronze sea cocks with underwater bronze thru hulls
- Brownies dive compressor and reel system
- Compressed air service outlet in engine room
- Sea Recovery watermaker, 1400 gallon/day
- All Primary machinery and equipment resiliently mounted
- Lower deck soles vibration isolated
- Engine-powered assisted hydraulic steering system
- Stainless steel hydraulic lines
- Stainless steel rudder stocks
- Custom twin bronze airfoil rudder system
- Shore power cord, 100' - 100 amp 240 VAC, starboard aft
- Automatic power cable reel, 24 VDC
- Isolation transformer, 24 KVA
- Shore power "Smart Y" box
- AC and DC Master control distribution panel located in engine room with (4) subpanels
- Drip-less shaft seals, Bronze "I" strut system, Bronze rudders
- (2) Frequency controlled Vane axial engine room exhaust fans
- Double acoustical and thermal Insulation in engine compartment
- Air conditioning and heat with digital controls
- 3HP 240 volt main bilge, manifold to three bilges
- (3) 24 volt bilge pumps, one per bilge compartment
- Fire protection system
- Fresh water outlet in Engine Room
- Center-line fuel tank, fiberglass, Hetron fire retardant resin, 2000 gals
- Manual and electronic tank level indicators w/high and low alarms
- Fuel lines, aircraft type, solid and flexible tubing, stainless steel grade
- Oil changing system for engines and generators, with quick connect drain fittings, on engines and generators
- Oil reserve tank 24 gallons used / 24 gallons
- (5) Bladed fixed-pitch Bronze propellers with (2) ready to go spares
- Cruisair A/C systems, insulated copper piping supply and return lines
- Central vacuum system 120 volt
- Headhunter marine toilet system, 200 gal holding tank
- Water heater, 40 gal
- Pressurized 220-volt water system, 400-gallon tank, polyethylene, FDA approved,

electronic tank level indicator with low and high alarms

Tender

- Viking 8-person life raft

Recent Upgrades and Service

- Caterpillar 2,000 hour complete service with 5-year warranty
- Complete Yacht Painted (2018)
- Generators serviced
- Stabilizers serviced
- New Exterior soft goods w/ covers
- New Garmin electronics
- FLIR added
- Second set of props, (Spare Props)
- 3-Sided enclosure for the hardtop
- Aft deck bar unit with sink and refrigerator, Teak top (canvas cover included)
- All exterior tables in Teak
- High-gloss Walnut interior finish (in lieu of standard cherry finish)
- Dive air compressor installed
- All windows/topsides were pulled, re-bedded, and sealed

Exclusions

Owner's personal belongings.

Disclaimer

The Company offers the details of this vessel or yacht in good faith but cannot guarantee or warrant the accuracy of this information nor warrant the condition of the vessel. A buyer should instruct his representatives, agents, or his surveyors, to investigate such details as the buyer desires validated. This vessel or yacht is offered subject to prior sale, price change, or withdrawal without notice.

PHOTOS

Salon



Salon



Salon Looking Aft



Dining Area



Dining Area



Galley



Galley



Dinette in Galley



Lower Helm



Lower Helm



Lower Helm



Galley Looking Aft



Master Stateroom



Master Stateroom



Master Stateroom



Master Stateroom



Master Bath



Companionway



Port VIP Stateroom



Port VIP Bath



Starboard VIP Stateroom



Forward Port Guest Stateroom



Guest Bath



Forward Bow Guest Stateroom



Guest Bath



Laundry Area



Flybridge



Flybridge Bar



Flybridge Dining



Flybridge



Upper Helm



Upper Helm



Flybridge



Sun Deck Seating



Side Deck



Foredeck



Aft Deck



Aft Deck



Aft Deck



Stern



Engine Room



Engine Room



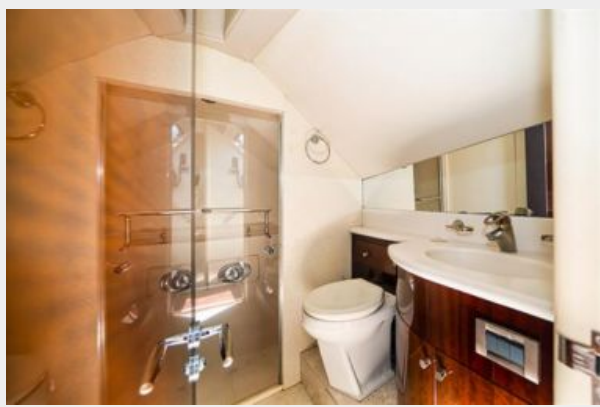
Engine Room



Captain's Cabin



Captain's Head



Stern



Stern



Port Bow Profile



Port Stern Profile



CONTACTS

Andrey Shestakov, leading yacht broker of the sales department of Shestakov Yacht Sales Inc. Shestakov Yacht Sales Inc., the official representative of the Miami/Fort Lauderdale FL headquarters.

Contact details

Email: andrey@shestakovyachtsales.com

Web: shestakovyachtsales.com/en/

Telephones

USA: +1(954)274-4435

Office hours

Monday – Saturday: **9:00 - 21:00** EDT

Sunday: **closed**

Address



Harbour Towne Marina, 850 NE 3rd St,
STE 213, Dania, FL 33004