

ARROW'S ABYSS — AZIMUT



Builder: AZIMUT

Year Built: 2018

Model: Motor Yacht

Price: PRICE ON APPLICATION

Location: United States

LOA: 54' 0" (16.46m)

Beam: 16' 3" (4.95m)

Max Draft: 3' 3" (0.99m)

Cruise Speed: 27 Kts. (31 MPH)

Max Speed: 33 Kts. (38 MPH)

Our experienced yacht broker, Andrey Shestakov, will help you choose and buy a yacht that best suits your needs **ARROW'S ABYSS — AZIMUT** from our catalogue. Presently, at Shestakov Yacht Sales Inc., we have a wide variety of yachts available on our sale's list. We also work in close contact with all the big yacht manufacturers from all over the world.

If you would like to buy a yacht **ARROW'S ABYSS — AZIMUT** or would like help answering any questions concerning purchasing, selling or chartering a yacht, please call **+1(954)274-4435**

TABLE OF CONTENTS

TABLE OF CONTENTS	2
SPECIFICATIONS	4
Overview	4
Basic Information	4
Dimensions	4
Speed, Capacities and Weight	4
Accommodations	5
Hull and Deck Information	5
Engine Information	5
DETAILED INFORMATION	6
FLYBRIDGE	6
COCKPIT	6
SALON & DINETTE	6
GALLEY	7
MASTER CABIN	7
MASTER HEAD COMPARTMENT	7
VIP CABIN	8
VIP HEAD / DAY HEAD	8
GUEST CABIN	8
LOWER HELM ELECTRONICS	8
FLYBRIDGE ELECTRONICS	9
BOW	9
PLATFORM	9
WALKWAYS	10
NOTABLE FEATURES	10
BUILD DETAILS	10
DISCLAIMER	11
Exclusions	11

Disclaimer	11
PHOTOS	13
CONTACTS	16
Contact details	16
Telephones	16
Office hours	16
Address	16

SPECIFICATIONS

Overview

"Arrow's Abyss" is a 2018 Azimut 54' Flybridge Motor Yacht featuring a spacious 3 stateroom 2 head layout with crew quarters. She has 210 hours on Volvo D11's and is equipped with the latest Raymarine electronics, Seakeeper gyro stabilization, Xenta joystick controls, a hydraulic swim platform, and shows in like new condition.

Basic Information

Category: Motor Yacht	Sub Category: Flybridge
Model Year: 2018	Year Built: 2018
Country: United States	

Dimensions

LOA: 54' 0" (16.46m)	Beam: 16' 3" (4.95m)
Max Draft: 3' 3" (0.99m)	

Speed, Capacities and Weight

Cruise Speed: 27 Kts. (31 MPH)	Max Speed: 33 Kts. (38 MPH)
Displacement: 60000 Pounds	Water Capacity: 156 Gallons
Holding Tank: 59 Gallons	Fuel Capacity: 303 Gallons

Accommodations

Total Cabins: 3

Total Berths: 2

Total Heads: 2

Hull and Deck Information

Hull Material: Fiberglass

Engine Information

Engines: 2

Manufacturer: Volvo

Model: D11

Engine Type: Inboard

Fuel Type: Diesel

DETAILED INFORMATION

FLYBRIDGE

- The large flybridge can be accessed from the portside staircase
- Waterproof access hatch in aluminum and plexiglass
- Smoked plexiglass windshield with stainless steel and aluminum frame
- Stainless steel handrails
- Helm station with adjustable steering wheel control
- L-shaped sofa joined with stern sunbathing area
- Teak adjustable table with central leg in stainless steel
- Freshwater sink
- Kenyon electric grill
- Fixed convertible hard top with manual soft top insert
- JL Audio speakers with Fusion head units

COCKPIT

- Access to the cockpit from a stainless steel and plexiglass gate
- Large stainless steel sliding glass door
- Large C shaped aft dinette with hi-gloss teak table
- Cushions for cockpit bench
- Engine compartment access from cockpit floor
- Crew cabin access from the cockpit bench
- Curved handrail on the stern platform
- Handrail for the fly bridge access staircase
- Handles on cockpit bench arms
- Lighting: spots on the ceiling
- Hot and cold fresh water shower
- JL speakers with Fusion head units

SALON & DINETTE

- Wrap around port side sofa with single pull out berth
- Retractable salon TV to starboard
- Bose surround sound
- Access to the lower deck via centerline staircase
- Curtains for windows, aft, and sliding blind for salon door

- Rectangular table in dinette with center removable insert
- Storage under the dinette sofa

GALLEY

- Miele 3 burner ceramic-glass electric cook top with spill rail
- Air extractor in ceiling with active carbon filters
- Miele microwave / convection oven combo
- Electric window

MASTER CABIN

- Full beam mid ship
- Queen bed placed diagonally
- 2 reading lights
- Oak wood headboard with storage behind
- Large Portholes port and starboard
- Vanity table with seats on port side
- Storage under berth
- Deck hatch (emergency exit above the bed)
- Bulkhead covering in fabric and wood paneling
- Large closet with safe
- TV system

MASTER HEAD COMPARTMENT

- Entrance from master cabin
- TECMA Head
- Chrome-plated mixer tap
- Separate shower with flat door
- Cabinet with 2 sliding doors above washbasin top
- Lighting: down light on cabinet and spots in the shower
- Large Porthole

VIP CABIN

- Double bed
- 2 reading lights
- Direct access to head compartment
- Large Portholes port and starboard
- Deck hatch

VIP HEAD / DAY HEAD

- Located aft of the VIP cabin, on port side
- Entrance from the VIP or from hallway
- TECMA
- Round shower cubicle (3 doors)
- Lighting: down light on cabinet and spots in the shower
- Large Porthole

GUEST CABIN

- On starboard side
- 2 single beds headboard with mirror and oak panels
- Custom Handcraft Mattresses
- 1 night table between the two beds (2 opening compartments)
- 1 wardrobe with hanging rail and shelves
- Large Porthole
- Carpeted floor
- 2 reading lights

LOWER HELM ELECTRONICS

- (2) Raymarine E125's (HT)
- Raymarine autopilot P70R with control knob
- Raymarine 72 mile radar
- Raymarine VHF Raymic 260
- Volvo Penta controls with Volvo engine displays
- Xenta Joystick controls linking bow and stern thruster and gears

- Dynamic Positioning System
- Jabsco searchlight controls
- Bennett Trim Tabs
- Quick Chain counter windlass controller

FLYBRIDGE ELECTRONICS

- (2) Raymarine E165 (HT)
- Raymarine autopilot P70R with control knob
- Raymarine 72 mile radar
- Raymarine VHF Raymic 260
- Volvo Penta controls with Volvo engine displays
- Xenta Joystick Controls linking bow and stern thruster and gears
- Dynamic Positioning System
- Jabsco searchlight controls
- Bennett Trim Tabs
- Quick Chain Counter windlass controller
- Raymarine P70R Autopilot w/ control knob
- Raymarine VHF Raymic 260

BOW

- Anchor peak with drainage and fenders compartment
- Delta anchor
- Calibrated anchor chain bow roller
- Winch 1700 W
- Two cleats in stainless steel
- Large sunbathing area with convertible lounges
- Chain washdown

PLATFORM

- Hydraulic lift
- Teak deck on lift
- Telescopic stainless steel swim ladder

WALKWAYS

- (2) Fuel fillers
- Fresh water filler
- Black water discharge outlet
- Non-slip floor
- Handrails on fly bridge
- Stainless steel and high-strength PVC rub rail

NOTABLE FEATURES

- Seakeeper Gyro Stabilizer
- Xenta Joystick Control
- Bow Thruster
- Stern Thruster
- Teak flooring on aft deck, stairs, and platform
- Washer/dryer in master stateroom
- Underwater lights
- Salon icemaker
- New 2021 Isotherm refrigerator in galley
- Teak Hi-Gloss exterior tables
- Glendenning Cable Masters
- Flybridge refrigerator and grill

BUILD DETAILS

- The structural project of the hull has been approved by RINA. This means a further guarantee of the quality of the structure and this is also confirmed by the use of state-of-the-art techniques and materials. Construction techniques and materials have been researched in depth to find the best possible combination of quality, weight and rigidity. The hull, main deck, inner-liners, and structures have a sandwich structure with high-performance PVC core, to achieve maximum rigidity and impact resistance. These parts are laminated using infusion techniques, reducing the weight, and increasing the quality level.

- Vinyl ester resins are used for the lamination of the hull. This kind of resin guarantees a excellent resistance to osmosis. On the strength of this, Azimut is able to offer a 5-year warranty against osmosis. High quality isophthalic resin is used for the whole remaining lamination process.
- Structural bulkheads have a sandwich structure with PVC core. The use of “next-generation” structural adhesives has been one of the key points in the process. The resulting bonding techniques and structural concepts have been checked by using an FEA model analysis. This calculation model, normally used by aeronautical and automotive companies, makes it possible to simulate the behavior of the boat under the most severe stress conditions, testing the structure in every single detail.
- The frame of the superstructure has been reinforced by carbon fibers in order to increase the rigidity and reduce weight.
- The planning hull has a 12° fore deadrise and 21° midship deadrise.

DISCLAIMER

The company offers the details of this vessel in good faith but cannot guarantee or warrant the accuracy of this information nor warrant the condition of the vessel. A buyer should instruct his agents, or his surveyors, to investigate such details as the buyer desires validated. This vessel is offered subject to prior sale, price change or withdrawal without notice.

Exclusions

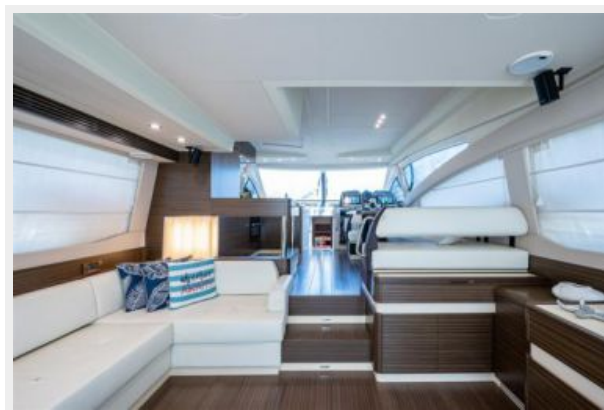
Owner's personal belongings.

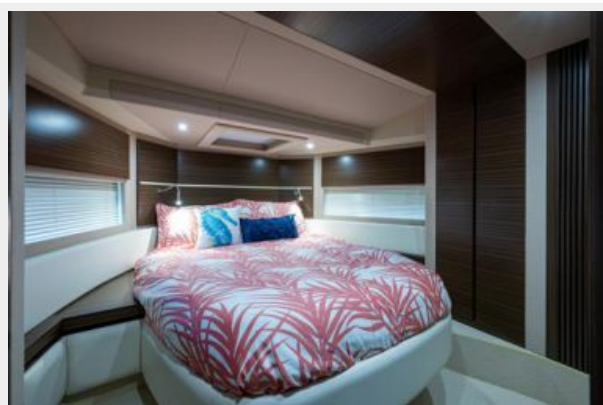
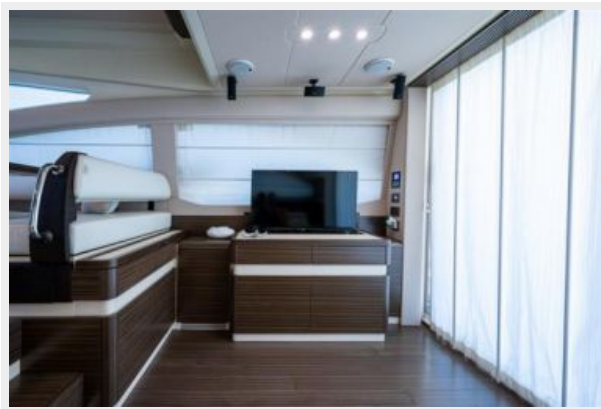
Disclaimer

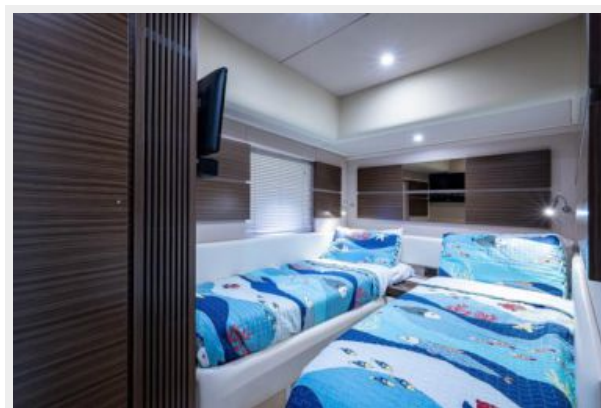
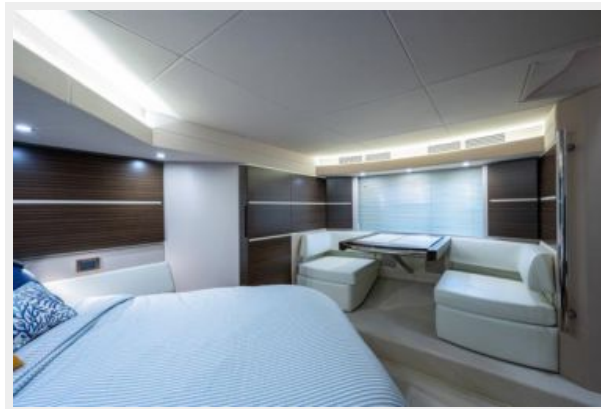
The Company offers the details of this vessel or yacht in good faith but cannot guarantee or warrant the accuracy of this information nor warrant the condition of the vessel. A buyer should instruct his representatives, agents, or his surveyors, to investigate such details as the buyer desires validated. This vessel or yacht is offered subject to prior sale, price change, or withdrawal

without notice.

PHOTOS







CONTACTS

Andrey Shestakov, leading yacht broker of the sales department of Shestakov Yacht Sales Inc. Shestakov Yacht Sales Inc., the official representative of the Miami/Fort Lauderdale FL headquarters.

Contact details

Email: **andrey@shestakovyachtsales.com**

Web: shestakovyachtsales.com/en/

Telephones

USA: **+1(954)274-4435**

Office hours

Monday – Saturday: **9:00 - 21:00 EDT**

Sunday: **closed**

Address



Harbour Towne Marina, 850 NE 3rd St,
STE 213, Dania, FL 33004