

ARROW'S ABYSS — AZIMUT



Судостроитель: [AZIMUT](#)

Год постройки: 2018

Модель: Моторная яхта

Цена: **ЦЕНА ЯХТЫ ПО ЗАПРОСУ**

Местонахождение: United States

Длина общая: 54' 0" (16.46m)

Ширина: 16' 3" (4.95m)

Макс. осадка: 3' 3" (0.99m)

Крейс. скорость: 27 Kts. (31 MPH)

Макс. скорость: 33 Kts. (38 MPH)

Купить **ARROW'S ABYSS — AZIMUT** а также выбрать подходящую вам яхту из нашего каталога яхт вам поможет опытный яхтенный брокер Андрей Шестаков. На сегодняшний день компания **Shestakov Yacht Sales Inc.** имеет большое количество яхт в собственном списке продаж, а также тесно сотрудничает со всеми крупными яхтенными производителями по всему миру.

Для того чтобы купить яхту **ARROW'S ABYSS — AZIMUT** а также проконсультироваться по любому вопросу связанному с покупкой, продажей, чартером яхт позвоните по телефону **+7(918)465-66-44**.

ОГЛАВЛЕНИЕ

ОГЛАВЛЕНИЕ	2
ХАРАКТЕРИСТИКИ	4
Обзор	4
Основная информация	4
Размеры	4
Скорость, вместимость и масса	4
Размещение	5
Корпус и палуба	5
Информация о двигателе	5
ПОДРОБНОЕ ОПИСАНИЕ	6
FLYBRIDGE	6
СОСКИП	6
SALON & DINETTE	6
GALLEY	7
MASTER CABIN	7
MASTER HEAD COMPARTMENT	7
VIP CABIN	8
VIP HEAD / DAY HEAD	8
GUEST CABIN	8
LOWER HELM ELECTRONICS	8
FLYBRIDGE ELECTRONICS	9
BOW	9
PLATFORM	9
WALKWAYS	10
NOTABLE FEATURES	10
BUILD DETAILS	10
DISCLAIMER	11
Исключения	11

Отказ от ответственности	11
ФОТОГРАФИИ	13
КОНТАКТЫ	16
Контактная информация	16
Телефоны	16
Время работы	16
Адрес	16

ХАРАКТЕРИСТИКИ

Обзор

"Arrow's Abyss" is a 2018 Azimut 54' Flybridge Motor Yacht featuring a spacious 3 stateroom 2 head layout with crew quarters. She has 210 hours on Volvo D11's and is equipped with the latest Raymarine electronics, Seakeeper gyro stabilization, Xenta joystick controls, a hydraulic swim platform, and shows in like new condition.

Основная информация

Тип судна: Моторная яхта

Подкатегория: Flybridge

Модельный год: 2018

Год постройки: 2018

Страна: United States

Размеры

Длина общая: 54' 0" (16.46m)

Ширина: 16' 3" (4.95m)

Макс. осадка: 3' 3" (0.99m)

Скорость, вместимость и масса

Крейс. скорость: 27 Kts. (31 MPH)

Макс. скорость: 33 Kts. (38 MPH)

Водоизмещение: 60000 Pounds

Вместимость воды: 156 Gallons

Вместимость сточного бака: 59 Gallons

Объем топливного бака: 303 Gallons

Размещение

Всего кают: 3

Всего коек: 2

Всего ком. состава: 2

Корпус и палуба

Материал корпуса: Fiberglass

Информация о двигателе

Двигатели: 2

Производитель: Volvo

Модель: D11

Тип двигателя: Inboard

Тип топлива: Diesel

ПОДРОБНОЕ ОПИСАНИЕ

FLYBRIDGE

- The large flybridge can be accessed from the portside staircase
- Waterproof access hatch in aluminum and plexiglass
- Smoked plexiglass windshield with stainless steel and aluminum frame
- Stainless steel handrails
- Helm station with adjustable steering wheel control
- L-shaped sofa joined with stern sunbathing area
- Teak adjustable table with central leg in stainless steel
- Freshwater sink
- Kenyon electric grill
- Fixed convertible hard top with manual soft top insert
- JL Audio speakers with Fusion head units

СОСКИП

- Access to the cockpit from a stainless steel and plexiglass gate
- Large stainless steel sliding glass door
- Large C shaped aft dinette with hi-gloss teak table
- Cushions for cockpit bench
- Engine compartment access from cockpit floor
- Crew cabin access from the cockpit bench
- Curved handrail on the stern platform
- Handrail for the fly bridge access staircase
- Handles on cockpit bench arms
- Lighting: spots on the ceiling
- Hot and cold fresh water shower
- JL speakers with Fusion head units

САЛОН & ДИНЕТТЕ

- Wrap around port side sofa with single pull out berth
- Retractable salon TV to starboard
- Bose surround sound
- Access to the lower deck via centerline staircase
- Curtains for windows, aft, and sliding blind for salon door

- Rectangular table in dinette with center removable insert
- Storage under the dinette sofa

GALLEY

- Miele 3 burner ceramic-glass electric cook top with spill rail
- Air extractor in ceiling with active carbon filters
- Miele microwave / convection oven combo
- Electric window

MASTER CABIN

- Full beam mid ship
- Queen bed placed diagonally
- 2 reading lights
- Oak wood headboard with storage behind
- Large Portholes port and starboard
- Vanity table with seats on port side
- Storage under berth
- Deck hatch (emergency exit above the bed)
- Bulkhead covering in fabric and wood paneling
- Large closet with safe
- TV system

MASTER HEAD COMPARTMENT

- Entrance from master cabin
- TECMA Head
- Chrome-plated mixer tap
- Separate shower with flat door
- Cabinet with 2 sliding doors above washbasin top
- Lighting: down light on cabinet and spots in the shower
- Large Porthole

VIP CABIN

- Double bed
- 2 reading lights
- Direct access to head compartment
- Large Portholes port and starboard
- Deck hatch

VIP HEAD / DAY HEAD

- Located aft of the VIP cabin, on port side
- Entrance from the VIP or from hallway
- TECMA
- Round shower cubicle (3 doors)
- Lighting: down light on cabinet and spots in the shower
- Large Porthole

GUEST CABIN

- On starboard side
- 2 single beds headboard with mirror and oak panels
- Custom Handcraft Mattresses
- 1 night table between the two beds (2 opening compartments)
- 1 wardrobe with hanging rail and shelves
- Large Porthole
- Carpeted floor
- 2 reading lights

LOWER HELM ELECTRONICS

- (2) Raymarine E125's (HT)
- Raymarine autopilot P70R with control knob
- Raymarine 72 mile radar
- Raymarine VHF Raymic 260
- Volvo Penta controls with Volvo engine displays
- Xenta Joystick controls linking bow and stern thruster and gears

- Dynamic Positioning System
- Jabsco searchlight controls
- Bennett Trim Tabs
- Quick Chain counter windlass controller

FLYBRIDGE ELECTRONICS

- (2) Raymarine E165 (HT)
- Raymarine autopilot P70R with control knob
- Raymarine 72 mile radar
- Raymarine VHF Raymic 260
- Volvo Penta controls with Volvo engine displays
- Xenta Joystick Controls linking bow and stern thruster and gears
- Dynamic Positioning System
- Jabsco searchlight controls
- Bennett Trim Tabs
- Quick Chain Counter windlass controller
- Raymarine P70R Autopilot w/ control knob
- Raymarine VHF Raymic 260

BOW

- Anchor peak with drainage and fenders compartment
- Delta anchor
- Calibrated anchor chain bow roller
- Winch 1700 W
- Two cleats in stainless steel
- Large sunbathing area with convertible lounges
- Chain washdown

PLATFORM

- Hydraulic lift
- Teak deck on lift
- Telescopic stainless steel swim ladder

WALKWAYS

- (2) Fuel fillers
- Fresh water filler
- Black water discharge outlet
- Non-slip floor
- Handrails on fly bridge
- Stainless steel and high-strength PVC rub rail

NOTABLE FEATURES

- Seakeeper Gyro Stabilizer
- Xenta Joystick Control
- Bow Thruster
- Stern Thruster
- Teak flooring on aft deck, stairs, and platform
- Washer/dryer in master stateroom
- Underwater lights
- Salon icemaker
- New 2021 Isotherm refrigerator in galley
- Teak Hi-Gloss exterior tables
- Glendenning Cable Masters
- Flybridge refrigerator and grill

BUILD DETAILS

- The structural project of the hull has been approved by RINA. This means a further guarantee of the quality of the structure and this is also confirmed by the use of state-of-the-art techniques and materials. Construction techniques and materials have been researched in depth to find the best possible combination of quality, weight and rigidity. The hull, main deck, inner-liners, and structures have a sandwich structure with high-performance PVC core, to achieve maximum rigidity and impact resistance. These parts are laminated using infusion techniques, reducing the weight, and increasing the quality level.

- Vinyl ester resins are used for the lamination of the hull. This kind of resin guarantees a excellent resistance to osmosis. On the strength of this, Azimut is able to offer a 5-year warranty against osmosis. High quality isophthalic resin is used for the whole remaining lamination process.
- Structural bulkheads have a sandwich structure with PVC core. The use of “next-generation” structural adhesives has been one of the key points in the process. The resulting bonding techniques and structural concepts have been checked by using an FEA model analysis. This calculation model, normally used by aeronautical and automotive companies, makes it possible to simulate the behavior of the boat under the most severe stress conditions, testing the structure in every single detail.
- The frame of the superstructure has been reinforced by carbon fibers in order to increase the rigidity and reduce weight.
- The planning hull has a 12° fore deadrise and 21° midship deadrise.

DISCLAIMER

The company offers the details of this vessel in good faith but cannot guarantee or warrant the accuracy of this information nor warrant the condition of the vessel. A buyer should instruct his agents, or his surveyors, to investigate such details as the buyer desires validated. This vessel is offered subject to prior sale, price change or withdrawal without notice.

Исключения

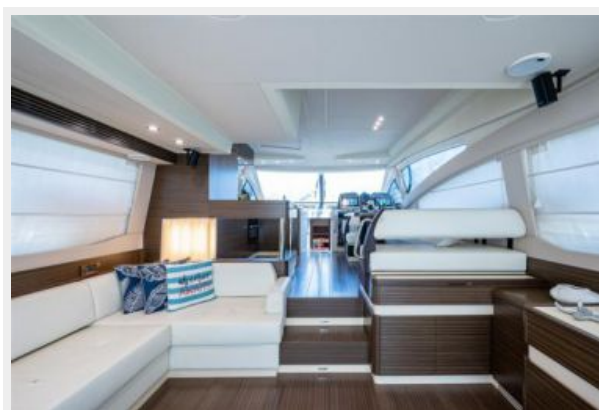
При продаже яхты исключаются личные вещи владельца.

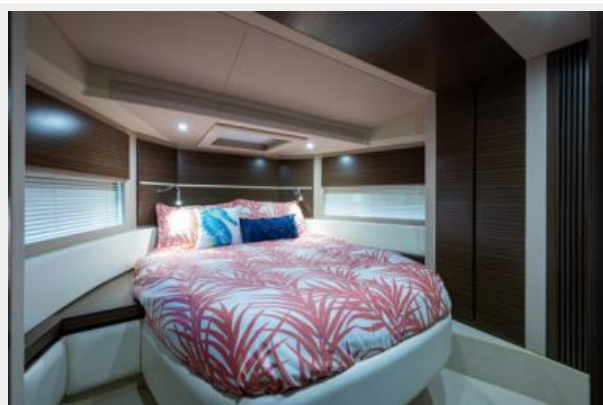
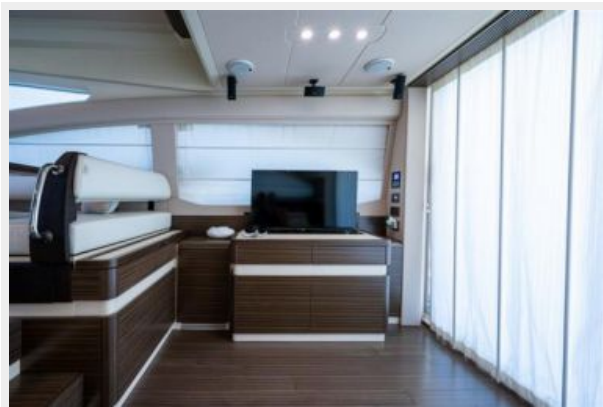
Отказ от ответственности

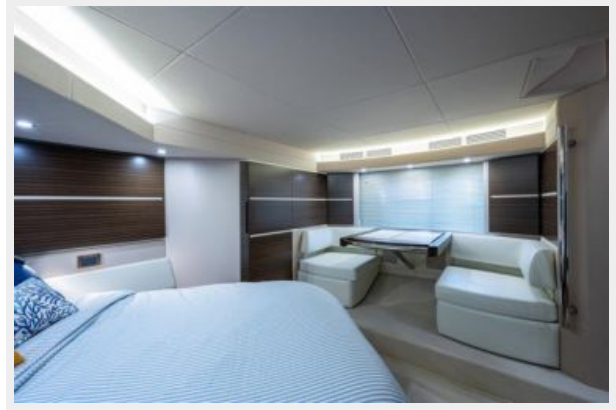
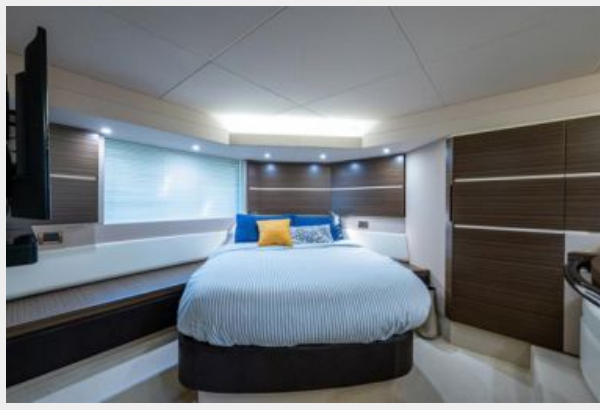
Компания предоставляет описание судна или яхты добросовестно, но не может гарантировать точность этой информации, а также не ручается за техническое состояние. Покупатель должен проинструктировать своих агентов или оценщиков исследовать представленную информацию более подробно, по собственному желанию.

Продажа судна или яхты, изменение цены или снятие с продажи будет происходить без предварительного уведомления.

ФОТОГРАФИИ







КОНТАКТЫ

Андрей Шестаков (Andrey Shestakov) – ведущий яхтенный брокер отдела продаж яхт и судов компании Shestakov Yacht Sales Inc. Официальный представитель Shestakov Yacht Sales Inc. для русскоговорящих клиентов в центральном офисе компании в Майами/Форт Лодердейл/Флорида/США.

Контактная информация

Email: andrey@shestakovyachtsales.com

Web: shestakovyachtsales.com

Телефоны

Краснодарский край: **+7(918)465-66-44**

США, Майами, Флорида: **+1(954)274-4435**

Время работы

Понедельник – Суббота: **9:00 - 21:00**
EDT

Воскресенье: **Закрито**

Адрес



Harbour Towne Marina, 850 NE 3rd St,
STE 213, Dania, FL 33004