

BALISTA — CANTIERI DI PISA



Builder: CANTIERI DI PISA

Year Built: 2013

Model: Motor Yacht

Price: PRICE ON APPLICATION

Location: Italy

LOA: 153' 0" (46.63m)

Beam: 28' 8" (8.74m)

Max Draft: 8' 6" (2.59m)

Cruise Speed: 22 Kts. (25 MPH)

Max Speed: 26 Kts. (30 MPH)

Our experienced yacht broker, Andrey Shestakov, will help you choose and buy a yacht that best suits your needs **BALISTA — CANTIERI DI PISA** from our catalogue. Presently, at Shestakov Yacht Sales Inc., we have a wide variety of yachts available on our sale's list. We also work in close contact with all the big yacht manufacturers from all over the world.

If you would like to buy a yacht **BALISTA — CANTIERI DI PISA** or would like help answering any questions concerning purchasing, selling or chartering a yacht, please call **+1(954)274-4435**

TABLE OF CONTENTS

TABLE OF CONTENTS	2
SPECIFICATIONS	4
Overview	4
Basic Information	4
Dimensions	4
Speed, Capacities and Weight	4
Accommodations	5
Hull and Deck Information	5
Engine Information	5
DETAILED INFORMATION	6
WALKTHROUGH	6
ACCOMMODATIONS	6
CONSTRUCTION	7
MACHINERY	7
COMMUNICATION	8
NAVIGATION	8
ENTERTAINMENT	9
DOMESTIC EQUIPMENT	10
SECURITY, SAFETY, AND FIRE EQUIPMENT	10
TENDERS AND TOYS	11
DISCLAIMER	12
Exclusions	12
Disclaimer	12
PHOTOS	13
CONTACTS	18
Contact details	18
Telephones	18
Office hours	18

Address

18

SPECIFICATIONS

Overview

Powered with MTU 16V4000's she comfortably cruises at 20 knots and is capable of speeds up to 26 knots. Balista underwent a major refit with no expenses spared in the fall of 2019 and 2020. She is a highly desirable charter yacht with a consistently strong revenue stream.

Basic Information

Category: Motor Yacht

Model Year: 2013

Year Built: 2013

Refit Year: 2019

Country: Italy

Dimensions

LOA: 153' 0" (46.63m)

Beam: 28' 8" (8.74m)

Max Draft: 8' 6" (2.59m)

Speed, Capacities and Weight

Cruise Speed: 22 Kts. (25 MPH)

Max Speed: 26 Kts. (30 MPH)

Gross Tonnage: 467 Pounds

Water Capacity: 1585 Gallons

Fuel Capacity: 12153 Gallons

Accommodations

Total Cabins: 7

Sleeps: 14

Total Heads: 7

Hull and Deck Information

Hull Material: Fiberglass

Engine Information

Engines: 2

Manufacturer: MTU

Model: 16V4000 M93

Engine Type: Inboard

Fuel Type: Diesel

DETAILED INFORMATION

WALKTHROUGH

Balista has a new stunning interior. Offering a welcoming ambiance, the interior is adorned with beautiful Italian woodwork, stunning marble, and plush furnishings with a cool leather trim. Both the main salon and skylounge provide the perfect settings for hosting guests and unwinding. If seeking a private escape, the fold-out balconies off both sides of the skylounge are ideal. With sliding Asian inspired doors, the balconies also blur the lines between inside and out.

Balista accommodates up to 14 guests in seven staterooms. The main deck master suite is beautifully decorated and features a king-size bed, private office, and his-and-hers en-suite baths. The VIP stateroom offers versatility; it can either be a full-beam stateroom with a lounge or converted to two staterooms. The yacht also has two double-bed staterooms and two twin-bed staterooms.

Balista's vast outdoor living spaces offer options for alfresco dining and lounging. The sundeck features sun loungers aft, a Jacuzzi in the middle, and U-shaped seating under umbrellas and a bar forward. On the skylounge aft is alfresco dining and lounging. The yacht's main deck aft has another lounging area.

ACCOMMODATIONS

General:

Sleeps up to 14 guests in 7 staterooms, plus crew accommodations for up to 10 in 6 cabins.

Master Stateroom:

The Master stateroom features a full beam cabin on main deck with His and Hers bathrooms, walk-in wardrobe, and spacious Owner's study.

Guest Staterooms:

Guest accommodations include a full beam VIP stateroom (can be converted into two cabins), two twin staterooms each including a Pullman berth, and two double staterooms.

Every stateroom has its own ensuite bathroom and fitted with TV and stereo system.

Crew:

Engineer's cabin with double berth, study space and ensuite bathroom.

3 x twin bunked cabins with ensuite bathrooms.

2 x single cabins with ensuite bathrooms.

Crew Mess with adequate seating at dining tables plus fridge, sink, serving space and TV.

CONSTRUCTION

Built in 2013 by Cantieri di Pisa, Balista has fiberglass hull and superstructure, with teak decks.

MACHINERY

Main Engines

Engine Type: 2 x MTU 16V4000 M93 diesels @ 4,670 Hp each

Gearboxes for Main Engines: 2 x ZF 9050A

Drive: Prop shaft

Generators & Electricity

Output: 220/380V/3 Phase/50 Hz

Generators: 2 x 100 kW Kohler rebuilt in fall of 2019

Shore Power: 380V/3 Phase/50 Hz, 125 Amp

Shore Power Converters: 2 x ASEA

Batteries: 24V

ABT Trac ZERO speed stabilizers

Air Conditioning

Type: Condaria

Other Machinery

Watermakers: 2 x Idromar MC5S

Bow Thrusters: Hydrosystem BT120 851

Steering System: BCS

Rudder Angle Indicator: Sperry

Fuel Separator & Filtration: (2) NFV fuel conditioning

Sewage System: Hamann

Fire/Bilge Pump: Gianneschi

COMMUNICATION

Communication Systems:

SATcom

Satlink FB 150 – Inmarsat Fleet broadband

Furuno Felcom 15 Inmarsat system C

Seatel 4010 33 VSAT

Telephone System: Panasonic KXDTA 100 NE PBX

Radiotelephones:

2 x Furuno FR FM8800S VHF RT – Class A with DSC

Furuno FS 1570 SSB RT with DSC

Cellular Phone System:

(2) Burnside 3G

Intercom: Cantalupi

Misc:

WiFi LAN system with Livewire access controller

McMurdo SART

2 x McMurdo GMDSS portable VBHF R/T

NAVIGATION

Radar: Furuno SBand FAR 2137 10ft antenna

Furuno XBand FAR 2117 6.5ft antenna

Gyrocompass: Sperry Navigat X MK2

Magnetic Compass: Sperry Jupiter

Auto Pilot: Sperry C Plath Navipilot 4000

Depth Sounder: Furuno FE700

GPS: 2 x Furuno GP150

Wind Instruments: Furuno Wind & Weather center

Chart Plotter: Transas digital chart system, Maxsea digital chart system

Log: Furuno DS80 doppler log

Navtex: Furuno NX700B

Monitors: 4 x Furuno 19" color

Misc: Furuno FA150 AIS

ENTERTAINMENT

Television's:

Pioneer 60" & 50" Plasma TV's in salon & master stateroom

Sony 37", 32", & 26" TV's elsewhere

Video Recorders/Players:

Pioneer, Teac & Bose components for amplifiers,

Bluray

Docking stations, etc.

Nevo remote control of AV

Satellite Television:

Seatel SatTV antenna

Humax Sat TV receivers

Stereo Music System:

All cabins, main salon, and all deck areas

DOMESTIC EQUIPMENT

Cooking Equipment:

Cooker

Oven

Microwave

Refrigeration/Freezer:

Wine fridge

2 x Large fridge / freezers

Separate chilled larder in bow with (2) custom fridge/freezers

3 x Icemakers

2 x Bar fridges

1 x Dishwasher

Other: Dumbwaiter

Crew:

Crew Mess

Fridge and freezer

SECURITY, SAFETY, AND FIRE EQUIPMENT

Security Equipment:

CCTV System: Panasonic

Cameras: 2 x PAN WV Panasonic color

Misc:

2 x PAN WV Panasonic Vandal proof color camera flush mount

PAN WJ Panasonic digital hard drive recorder

Safety Equipment:

Life Rafts: 4 x 12 person Zodiac fitted with emergency packs

Life Buoys: 8 x, 2 with self igniting light + smoke signal, 2 with 30m buoyant lines, 2 with self igniting light

Life Jackets: 6 x Adult inflatable, 25 x Adult with light and whistle (self inflating), 5 x Child

EPIRBS: Ship's safe Captain's cabin and Master stateroom

Fire Fighting Equipment:

Fire detection and alarm system in the machinery space and throughout the vessel

Fire main water system

Fixed fire extinguishing system, installed in the machinery compartment

Portable fire extinguishers

4 x Fireman outfit sets

2 x 9 liter portable foam extinguishers in the engine room

2 x Fire axes, 4.5 lb head

Electric alarm panel in the wheelhouse with smoke and heat detectors, panic button + alarm bells

An emergency fire pump

Galley exhaust ducts fitted with local manual control shutters

5 liter CO2 fire extinguisher in machinery room + close to electric switchboards

Portable foam applicator in engine room

2 x Fire blankets, coated glass fiber, 180x120 cm

TENDERS AND TOYS

37' (11.3m) Intrepid - 2017

14' (4.2m) Castoldi Jet tender

2 x Seabob

2 x Yamaha VX Deluxe waverunner

21' (6.5m) high inflatable water-slide

Knee board

Wakeboard

Waterskis

Towable inflatables

Snorkeling equipment

*Not for sale or charter to US residents while in US waters.

DISCLAIMER

The company offers the details of this vessel in good faith but cannot guarantee or warrant the accuracy of this information nor warrant the condition of the vessel. A buyer should instruct his agents, or his surveyors, to investigate such details as the buyer desires validated. This vessel is offered subject to prior sale, price change or withdrawal without notice.

Exclusions

Owner's personal belongings.

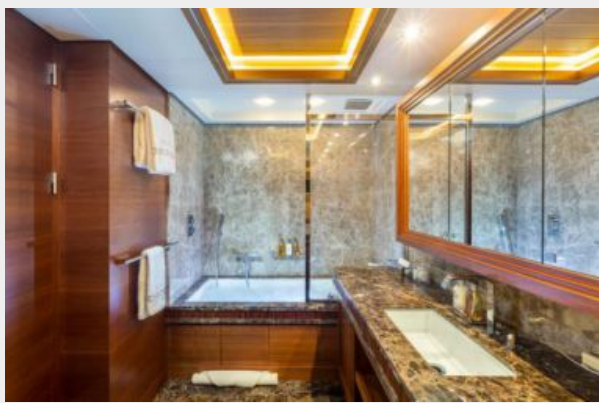
Disclaimer

The Company offers the details of this vessel or yacht in good faith but cannot guarantee or warrant the accuracy of this information nor warrant the condition of the vessel. A buyer should instruct his representatives, agents, or his surveyors, to investigate such details as the buyer desires validated. This vessel or yacht is offered subject to prior sale, price change, or withdrawal without notice.

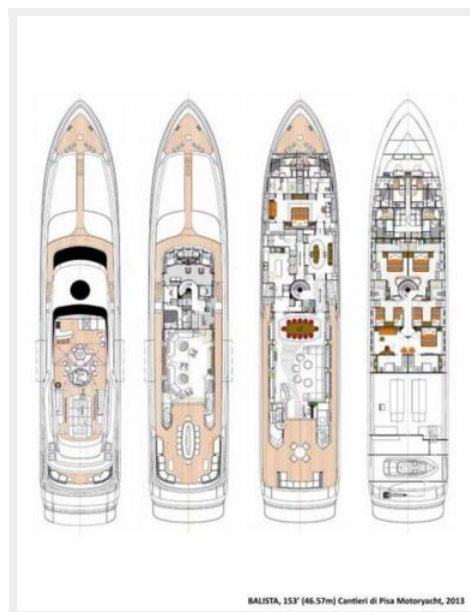
PHOTOS











CONTACTS

Andrey Shestakov, leading yacht broker of the sales department of Shestakov Yacht Sales Inc. Shestakov Yacht Sales Inc., the official representative of the Miami/Fort Lauderdale FL headquarters.

Contact details

Email: andrey@shestakovyachtsales.com

Web: shestakovyachtsales.com/en/

Telephones

USA: +1(954)274-4435

Office hours

Monday – Saturday: **9:00 - 21:00** EDT

Sunday: **closed**

Address



Harbour Towne Marina, 850 NE 3rd St,
STE 213, Dania, FL 33004