

KALEEN — BROWARD



Судостроитель: BROWARD

Год постройки: 1983

Модель: Моторная яхта

Цена: ЦЕНА ЯХТЫ ПО ЗАПРОСУ

Местонахождение: United States

Длина общая: 110' 0" (33.53m)

Ширина: 22' 0" (6.71m)

Макс. осадка: 6' 0" (1.83m)

Купить **KALEEN — BROWARD** а также выбрать подходящую вам яхту из нашего каталога яхт вам поможет опытный яхтенный брокер Андрей Шестаков. На сегодняшний день компания **Shestakov Yacht Sales Inc.** имеет большое количество яхт в собственном списке продаж, а также тесно сотрудничает со всеми крупными яхтенными производителями по всему миру.

Для того чтобы купить яхту **KALEEN — BROWARD** а также проконсультироваться по любому вопросу связанному с покупкой, продажей, чартером яхт позвоните по телефону **+7(918)465-66-44**.

ОГЛАВЛЕНИЕ

ОГЛАВЛЕНИЕ	2
ХАРАКТЕРИСТИКИ	4
Обзор	4
Основная информация	4
Размеры	4
Размещение	4
Корпус и палуба	4
Информация о двигателе	4
ПОДРОБНОЕ ОПИСАНИЕ	5
WALKTHROUGH	5
ACCOMMODATIONS	6
MECHANICAL EQUIPMENT	8
ELECTRICAL	9
ELECTRONICS	9
DECK EQUIPMENT	10
SAFETY AND SECURITY EQUIPMENT	11
TENDERS AND TOYS	11
RANGE	11
REFIT DETAILS JUNE-DECEMBER 2017	11
EXCLUSIONS	12
DISCLAIMER	13
Исключения	13
Отказ от ответственности	13
ФОТОГРАФИИ	14
КОНТАКТЫ	18
Контактная информация	18
Телефоны	18
Время работы	18

Адрес

18

ХАРАКТЕРИСТИКИ

Обзор

"Kaleen" is a 1983/2017 Broward 110' Enclosed Bridge Motor Yacht featuring a massive full beam salon, full beam master mid-ship and a spacious on deck VIP. She has a rich yachting history and has been owned by the same family for nearly 20 years.

Основная информация

Тип судна: Моторная яхта

Модельный год: 1983

Год постройки: 1983

Год обновления: 2017

Страна: United States

Размеры

Длина общая: 110' 0" (33.53m)

Ширина: 22' 0" (6.71m)

Макс. осадка: 6' 0" (1.83m)

Размещение

Всего кают: 4

Всего ком. состава: 5

Корпус и палуба

Материал корпуса: Aluminum

Информация о двигателе

Двигатели: 2

Производитель: Detroit Diesel

Модель: 12v71

Тип двигателя: Inboard

ПОДРОБНОЕ ОПИСАНИЕ

WALKTHROUGH

The aft deck is open with overhead cover from the extended boat deck. A teak stairway to port leads to the swim platform. A watertight door on the transom to starboard opens into the lazarette. The aft deck has a large L-settee, 4 teak chairs and table that will comfortably seat up to 8 persons for al fresco dining. There is a wet bar with ice maker on the forward bulkhead to port and additional storage cabinets to starboard.

When entering the main salon from the aft deck the eye is immediately drawn to the beautiful, back lit, etched glass sea life mural on the forward bulkhead. The main salon/dining area is full beam, decorated in neutral tones accented with black granite.

To port is a wet bar with wine cooler and refrigerator. There is an L-settee to port with matching ottoman and a U-settee to starboard with glass topped coffee table. An entertainment center with hi/lo TV, DVD and stereo /CD player is housed in the port side cabinetry that serves as a divider between the main salon and the dining area. The formal dining area has a glass topped table with seating for 8.

The starboard, opposite this cabinet, is a stairway leading to the master and guest staterooms. To port and starboard are built in cabinetry with black granite tops. The etched glass mural is on the forward bulkhead. Access to the main exterior deck is via the starboard side foyer. There is a day head just forward of the dining area and a stairway leading to the sky lounge. The full galley is amidship and features a full size walk in refrigerator as well as a day refrigerator and 2 large freezers, an informal dinette, 2 convection ovens, glass cook top and ample storage and counter space.

Forward of the galley is the VIP stateroom with queen berth and en suite head and shower. Fully forward is the stairway to the crew's quarters which has accommodations for 4 to 5 crew. The engine room is accessed from the crew's quarters.

The stairway from the starboard foyer leads to the pilothouse/sky lounge. The pilothouse helm is full beam with wing controls to port and starboard in addition to the main helm station. The console houses a full array of state of the art navigation equipment. A large bench settee provides helm seating and storage with an entertainment center in the aft compartment for the lounge area. The lounge is a cozy informal area with a large, black leather L-settee, glass coffee table and tub chair. The door to starboard opens to a large sun deck with a wet bar, an enormous lounge area, and teak occasional tables. The boat deck is aft.

The stairway to starboard in the main salon leads to the staterooms. The master is full beam amidship with a king size berth running athwartship on the starboard bulkhead. Opposite on the port bulkhead is an entertainment center and built in drawer storage. The aft bulkhead is hanging lockers with full length mirrors in the door panels. Forward are ensuite his and her baths. The starboard bath features a full-size Jacuzzi tub and the port head features a glass enclosed

shower.

Aft of the foyer are 2 guest staterooms each with en suite head and shower. The port cabin has a queen berth and the starboard cabin has twin berths. Both suites have ample drawer storage, hanging lockers and TV/DVD/stereo.

SALON

The full beam main salon has teak paneling, cream colored carpeting with matching upholstered overhead panels. Settees are light beige, accented with colorful throw pillows. The window treatments match the settees. Cabinets are topped with black granite.

U-shaped settee Sculptured mermaid coffee table L-shaped sofa and ottoman Curved wet bar w/refrigerator and wine cooler Built-in entertainment center w/ hi/lo TV, DVD, stereo and CD player, and Savant System with iPad controller Pony wall separates main salon from the Dining Salon Glass-topped table 8 Upholstered dining room chairs Black granite topped built-in cabinetry Etched glass, back lit marine life mural.

ACCOMMODATIONS

Master Stateroom

Full beam amidship

Beige/gold decor

King berth

Love seat

13' Closet w/full length mirrors on doors

Drawer storage

Entertainment center w/ TV/DVD/stereo & CD player

His & her en suite heads

New waterfall-style shower with seat

Microphor shower heads, Kohler "habitat" that functions as a steam bath, sauna & sun room, port

VIP Stateroom

On Deck

Burgundy/Dark Gold Decor

Queen berth

Additional Pullman berth

Secretary desk

En-suite head w/shower

TV/DVD/stereo

Port Guest Stateroom

Soft green decor

Queen berth

Nightstands

Drawer storage

Cedar-lined closet

Entertainment Center w/TV/DVD/stereo

En Suite head w/shower

Starboard Guest Stateroom

Silver/Cream decor

Twin berths

Nightstands

Drawer storage

Cedar-lined closet

Entertainment Center w/TV/DVD/stereo

En Suite head w/shower

Galley/Laundry

2 x True freezer

True refrigerator

5 x 7 x 8 Walk-in refrigerator

Wine cooler

Whirlpool Dishwasher

2 x Electrolux Convection oven

Bosch glass cooktop

Double sink with garbage disposal

Bosch washer/dryer, aft

Miele washer & Bosch Dryer, forward

Pantry storage

Crew Quarters

Accommodations for up to 5 crew members

Captain's cabin is forward with a double bunk plus en suite head w/shower

Washer/dryer

MECHANICAL EQUIPMENT

Main Engine:

Twin Detroit Diesel 12V71-TI diesels

Port generator (55kW)

Starboard generator (45kW)

Other Machinery:

2 Freshwater pumps

6 bilge pumps - 110V and 12V

Headhunter Waste Treatment Plant

20hp bow thruster

Micro-Commander single lever controls

Micro-Commander synchronizers

Wesmar stabilizers

Firelite alarm by Honeywell

Ocean Marine Ademco engine and bilge alarm system

Sentinel engine monitor system

Racor fuel filters

Fuel transfer system

Fuel monitoring system

Lube oil change system with 55-gallon waste oil tank

Robert power steering

Capac monitoring system

Bilge pump off main engines intakes

Work bench with vise

ELECTRICAL

Northern Lights generators, 55kW (port) & 45Kw (starboard)

Chargemaster & Xantrex Battery chargers

Atlas Spa II power system

ELECTRONICS

Communication Equipment:

ICOM IC-M604 VHF

Standard Horizon Matrix VHF

Iridrum Sat Phone

Cellular phone

Custom speaker system for bridge to deck communication

Navigation Equipment:

Furuno 72-mile radar

Furuno radar (new) 2017

Simrad AP50 autopilot

Garmin GPS Map 5212

Furuno GP32

Maretran DSM 250

Garmin, Raymarine, B&G (Depth sounders)

Raymarine electronic compass

DECK EQUIPMENT

Maxwell anchor system with 250' chain

2 Dunnage boxes with cushions

Wet bar

Magma BBQ

Marquipt davit

Kahlenberg air horn

3 Quartz lights

Stereo

L-shaped bench seating with cushions

Custom radar arch

SAFETY AND SECURITY EQUIPMENT

Rayline spotlights

26 life jackets

EPIRB

Ocean Marine Ademco burglar alarm system

TENDERS AND TOYS

18' Novurania hard bottom inflatable with 110hp Mercury 4 stroke

2x 2017 Yamaha EX Deluxe jet skis

RANGE

The range on Kaleen currently is 1200 nautical miles at 1800 rpm (11-12 kts) and 1500 -1600 nautical miles at 1400 - 1500 RPM (9kts) This can be increased as there are 2 x 500-gallon fuel tanks that are currently not being utilized.

REFIT DETAILS JUNE-DECEMBER 2017

New security system and fire system

New Atlas Shore Power system

New Electrical Panel in engine room and new selector switches for shore or generator power supply

Both generators completely rebuilt by Atlantic Marine Power

New blackwater pump

New water-maker installed with 1800 gallons per day capacity, combined capacity of 3200 gallons per day

Complete new electrical breaker boards installed in the lazarette

New ice maker in Bar

New large drawer fridge on aft deck

All new exterior cushions

New vinyl walls in guest hallway

New ceiling panels in guest area hallway Interior

Varnish repairs Complete strip and re varnish on cap-rails 14 coats

New paint on hull sides and topsides

All portholes were removed, painted, and re-sealed

New davit rotation motor

New resting bracket for davit

New chocks for tender and Jet skis New non-skid paint on all decks

New TV in Salon New SONOS sound system on flybridge

New Bosuns locker added on flybridge

New steps added for safety to reach masthead area

New saloon door

New large shower added in Master bathroom

New glass enclosure for shower

New carpets

New Miele stove top

New Aircon manifold system

New Dometic control board

New MedAir medical kit

New Dometic chiller

EXCLUSIONS

Mermaid Table in Salon

DISCLAIMER

The company offers the details of this vessel in good faith but cannot guarantee or warrant the accuracy of this information nor warrant the condition of the vessel. A buyer should instruct his agents, or his surveyors, to investigate such details as the buyer desires validated. This vessel is offered subject to prior sale, price change or withdrawal without notice.

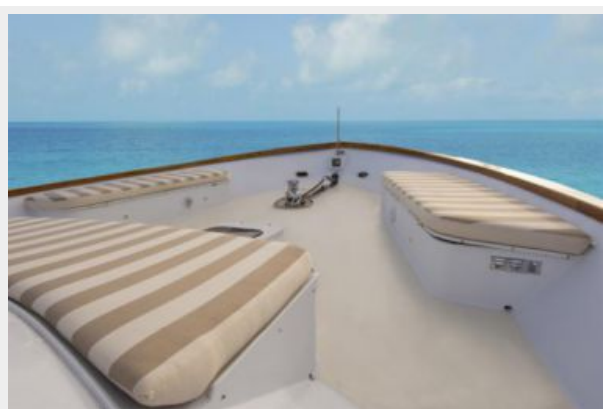
Исключения

При продаже яхты исключаются личные вещи владельца.

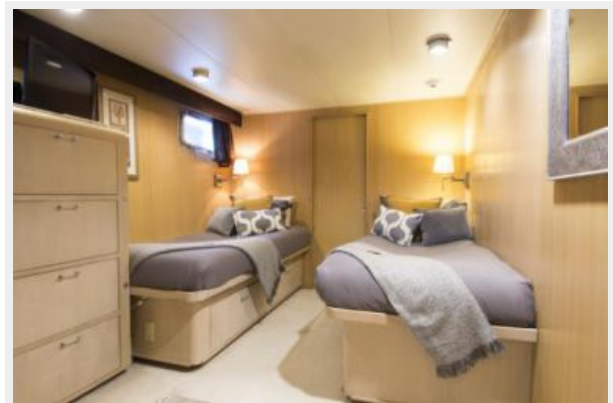
Отказ от ответственности

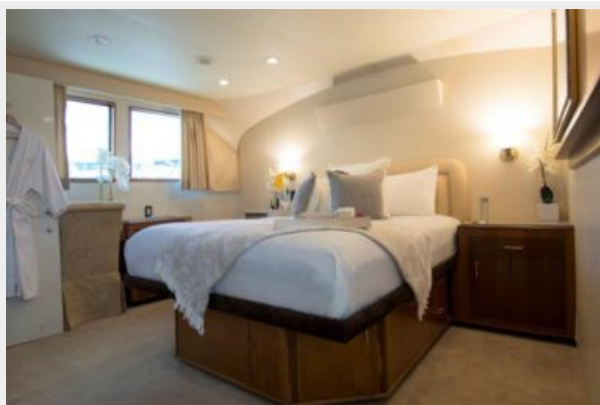
Компания предоставляет описание судна или яхты добросовестно, но не может гарантировать точность этой информации, а также не ручается за техническое состояние. Покупатель должен проинструктировать своих агентов или оценщиков исследовать представленную информацию более подробно, по собственному желанию. Продажа судна или яхты, изменение цены или снятие с продажи будет происходить без предварительного уведомления.

ФОТОГРАФИИ









КОНТАКТЫ

Андрей Шестаков (Andrey Shestakov) – ведущий яхтенный брокер отдела продаж яхт и судов компании Shestakov Yacht Sales Inc. Официальный представитель Shestakov Yacht Sales Inc. для русскоговорящих клиентов в центральном офисе компании в Майами/Форт Лодердейл/Флорида/США.

Контактная информация

Email: andrey@shestakovyachtsales.com

Web: shestakovyachtsales.com

Телефоны

Краснодарский край: **+7(918)465-66-44**

США, Майами, Флорида: **+1(954)274-4435**

Время работы

Понедельник – Суббота: **9:00 - 21:00**
EDT

Воскресенье: **Закрито**

Адрес



Harbour Towne Marina, 850 NE 3rd St,
STE 213, Dania, FL 33004