

## AVANTI — GULFSTAR



**Судостроитель:** GULFSTAR

**Год постройки:** 1982

**Модель:** Center Cockpit

**Цена:** ЦЕНА ЯХТЫ ПО ЗАПРОСУ

**Местонахождение:** United States

**Длина общая:** 60' 0" (18.29m)

**Ширина:** 16' 0" (4.88m)

Купить **Avanti — GULFSTAR** а также выбрать подходящую вам яхту из нашего каталога яхт вам поможет опытный яхтенный брокер Андрей Шестаков. На сегодняшний день компания **Shestakov Yacht Sales Inc.** имеет большое количество яхт в собственном списке продаж, а также тесно сотрудничает со всеми крупными яхтенными производителями по всему миру.

Для того чтобы купить яхту **Avanti — GULFSTAR** а также проконсультироваться по любому вопросу связанному с покупкой, продажей, чартером яхт позвоните по телефону **+7(918)465-66-44**.

# ОГЛАВЛЕНИЕ

ОГЛАВЛЕНИЕ	2
ХАРАКТЕРИСТИКИ	8
Обзор	8
Основная информация	8
Размеры	8
Скорость, вместимость и масса	8
Размещение	8
Корпус и палуба	9
Информация о двигателе	9
ПОДРОБНОЕ ОПИСАНИЕ	10
MAIN DESCRIPTION	10
GULFSTAR 60 CENTER COCKPIT CUTTER - AVANTI MEDIA	10
GULFSTAR 60 CENTER COCKPIT CUTTER - AVANTI MAINTENANCE / UPGRADES	10
GULFSTAR 60 CENTER COCKPIT CUTTER - AVANTI WALKTHROUGH	10
GULFSTAR 60 CENTER COCKPIT CUTTER - AVANTI INVENTORY	12
GULFSTAR 60 CENTER COCKPIT CUTTER - AVANTI MAINTENANCE / UPGRADE LIST:	
DISCLAIMER	19 <sup>17</sup>
Исключения	19
Отказ от ответственности	19
ФОТОГРАФИИ	20
Gulfstar 60 - Avanti - - 1	20
Gulfstar 60 - Avanti - - 2	20
Gulfstar 60 - Avanti - - 3	20
Gulfstar 60 - Avanti - - 4	20
Gulfstar 60 - Avanti - - 5	20
Gulfstar 60 - Avanti - - 6	20
Gulfstar 60 - Avanti - - 7	21
Gulfstar 60 - Avanti - - 8	21

Gulfstar 60 - Avanti - - 9	21
Gulfstar 60 - Avanti - - 10	21
Gulfstar 60 - Avanti - - 11	21
Gulfstar 60 - Avanti - - 12	21
Gulfstar 60 - Avanti - - 13	22
Gulfstar 60 - Avanti - - 14	22
Gulfstar 60 - Avanti - - 15	22
Gulfstar 60 - Avanti - - 16	22
Gulfstar 60 - Avanti - - 17	22
Gulfstar 60 - Avanti - - 18	22
Gulfstar 60 - Avanti - - 19	23
Gulfstar 60 - Avanti - - 20	23
Gulfstar 60 - Avanti - - 21	23
Gulfstar 60 - Avanti - - 22	23
Gulfstar 60 - Avanti - - 23	23
Gulfstar 60 - Avanti - - 24	23
Gulfstar 60 - Avanti - - 25	24
Gulfstar 60 - Avanti - - 26	24
Gulfstar 60 - Avanti - - 27	24
Gulfstar 60 - Avanti - - 28	24
Gulfstar 60 - Avanti - - 29	24
Gulfstar 60 - Avanti - - 30	24
Gulfstar 60 - Avanti - - 31	25
Gulfstar 60 - Avanti - - 32	25
Gulfstar 60 - Avanti - - 33	25
Gulfstar 60 - Avanti - - 34	25
Gulfstar 60 - Avanti - - 35	25
Gulfstar 60 - Avanti - - 36	25
Gulfstar 60 - Avanti - - 37	26

---

Gulfstar 60 - Avanti - - 38	26
Gulfstar 60 - Avanti - - 39	26
Gulfstar 60 - Avanti - - 40	26
Gulfstar 60 - Avanti - - 41	27
Gulfstar 60 - Avanti - - 42	27
Gulfstar 60 - Avanti - - 43	27
Gulfstar 60 - Avanti - - 44	27
Gulfstar 60 - Avanti - - 45	27
Gulfstar 60 - Avanti - - 46	27
Gulfstar 60 - Avanti - - 47	28
Gulfstar 60 - Avanti - - 48	28
Gulfstar 60 - Avanti - - 49	28
Gulfstar 60 - Avanti - - 50	28
Gulfstar 60 - Avanti - - 51	28
Gulfstar 60 - Avanti - - 52	28
Gulfstar 60 - Avanti - - 53	29
Gulfstar 60 - Avanti - - 54	29
Gulfstar 60 - Avanti - - 55	29
Gulfstar 60 - Avanti - - 56	29
Gulfstar 60 - Avanti - - 57	29
Gulfstar 60 - Avanti - - 58	29
Gulfstar 60 - Avanti - - 59	30
Gulfstar 60 - Avanti - - 60	30
Gulfstar 60 - Avanti - - 61	30
Gulfstar 60 - Avanti - - 62	30
Gulfstar 60 - Avanti - - 63	30
Gulfstar 60 - Avanti - - 64	30
Gulfstar 60 - Avanti - - 65	31
Gulfstar 60 - Avanti - - 66	31

---

---

Gulfstar 60 - Avanti - - 67	31
Gulfstar 60 - Avanti - - 68	31
Gulfstar 60 - Avanti - - 69	31
Gulfstar 60 - Avanti - - 70	31
Gulfstar 60 - Avanti - - 72	32
Gulfstar 60 - Avanti - - 71	32
Gulfstar 60 - Avanti - - 74	32
Gulfstar 60 - Avanti - - 73	32
Gulfstar 60 - Avanti - - 75	33
Gulfstar 60 - Avanti - - 76	33
Gulfstar 60 - Avanti - - 77	33
Gulfstar 60 - Avanti - - 78	33
Gulfstar 60 - Avanti - - 79	33
Gulfstar 60 - Avanti - - 80	33
Gulfstar 60 - Avanti - - 82	34
Gulfstar 60 - Avanti - - 81	34
Gulfstar 60 - Avanti - - 83	34
Gulfstar 60 - Avanti - - 84	34
Gulfstar 60 - Avanti - - 86	35
Gulfstar 60 - Avanti - - 85	35
Gulfstar 60 - Avanti - - 88	35
Gulfstar 60 - Avanti - - 87	35
Gulfstar 60 - Avanti - - 89	36
Gulfstar 60 - Avanti - - 90	36
Gulfstar 60 - Avanti - - 91	36
Gulfstar 60 - Avanti - - 92	36
Gulfstar 60 - Avanti - - 93	36
Gulfstar 60 - Avanti - - 94	36
Gulfstar 60 - Avanti - - 95	37

---

Gulfstar 60 - Avanti - - 96	37
Gulfstar 60 - Avanti - - 97	37
Gulfstar 60 - Avanti - - 98	37
Gulfstar 60 - Avanti - - 99	38
Gulfstar 60 - Avanti - - 100	38
Gulfstar 60 - Avanti - - 101	38
Gulfstar 60 - Avanti - - 102	38
Gulfstar 60 - Avanti - - 103	38
Gulfstar 60 - Avanti - - 104	38
Gulfstar 60 - Avanti - - 105	39
Gulfstar 60 - Avanti - - 106	39
Gulfstar 60 - Avanti - - 107	39
Gulfstar 60 - Avanti - - 108	39
Gulfstar 60 - Avanti - - 110	39
Gulfstar 60 - Avanti - - 109	39
Gulfstar 60 - Avanti - - 111	40
Gulfstar 60 - Avanti - - 112	40
Gulfstar 60 - Avanti - - 113	40
Gulfstar 60 - Avanti - - 114	40
Gulfstar 60 - Avanti - - 115	41
Gulfstar 60 - Avanti - - 116	41
Gulfstar 60 - Avanti - - 117	41
Gulfstar 60 - Avanti - - 118	41
Gulfstar 60 - Avanti - - 120	41
Gulfstar 60 - Avanti - - 119	41
Gulfstar 60 - Avanti - - 122	42
Gulfstar 60 - Avanti - - 121	42
Gulfstar 60 - Avanti - - 124	42
Gulfstar 60 - Avanti - - 123	42

---

Gulfstar 60 - Avanti - - 125	43
Gulfstar 60 - Avanti - - 126	43
Gulfstar 60 - Avanti - - 127	43
Gulfstar 60 - Avanti - - 128	43
Gulfstar 60 - Avanti - - 129	44
Gulfstar 60 - Avanti - - 130	44
Gulfstar 60 - Avanti - - 132	44
Gulfstar 60 - Avanti - - 131	44
Gulfstar 60 - Avanti - - 133	45
Gulfstar 60 - Avanti - - 134	45
Gulfstar 60 - Avanti - - 135	45
Gulfstar 60 - Avanti - - 136	45
<b>КОНТАКТЫ</b>	<b>46</b>
Контактная информация	46
Телефоны	46
Время работы	46
Адрес	46

# ХАРАКТЕРИСТИКИ

## Обзор

Avanti is one of the finest examples of the Gulfstar 60 performance cruiser available on the market today. The Dick Lazzara design features graceful overhangs, a gentle sheer, and a low trunk cabin making for a yacht with beautiful lines. Below decks her four stateroom, three head layout is spacious and comfortable, featuring beautiful teak joinery and appointments throughout. Her current and previous owners have spared no expense in maintenance and upgrades, that include modern sail handling systems that can take you wherever you want to go safely with ease. She is a must see for anyone looking for a distinctive, world class sailing yacht.

## Основная информация

Тип судна: Center Cockpit

Подкатегория: Cutter

Модельный год: 1982

Год постройки: 1982

Страна: United States

## Размеры

Длина общая: 60' 0" (18.29m)

Ширина: 16' 0" (4.88m)

Трапы: 90' 0" (27.43m)

## Скорость, вместимость и масса

Водоизмещение: 60000 Pounds

Вместимость воды: 200 Gallons

Вместимость сточного бака: 100 Gallons Объем топливного бака: 340 Gallons

## Размещение

Всего кают: 4

Всего коек: 4

Всего ком. состава: 3



## Корпус и палуба

---

**Материал корпуса:** Fiberglass

## Информация о двигателе

---

**Двигатели:** 1

**Производитель:** Perkins

**Модель:** T6.354

**Тип двигателя:** Inboard

**Тип топлива:** Diesel

---

# ПОДРОБНОЕ ОПИСАНИЕ

---

## MAIN DESCRIPTION

---

Avanti is one of the finest examples of the Gulfstar 60 performance cruiser available on the market today. The Dick Lazzara design features graceful overhangs, a gentle sheer, and a low trunk cabin making for a yacht with beautiful lines. Below decks her four stateroom, three head layout is spacious and comfortable, featuring beautiful teak joinery and appointments throughout. Her current and previous owners have spared no expense in maintenance and upgrades, that include modern sail handling systems that can take you wherever you want to go safely with ease. She is a must see for anyone looking for a distinctive, world class sailing yacht.

## GULFSTAR 60 CENTER COCKPIT CUTTER - AVANTI MEDIA

---

To view media files on Avanti type or cut and paste these links (case sensitive) into your web browser:

Virtual Tour:

Video Tour:

Photo Slide Show:

## GULFSTAR 60 CENTER COCKPIT CUTTER - AVANTI MAINTENANCE / UPGRADES

---

Avanti has been extensively maintained and upgraded over the past decade. Newly installed systems and equipment include Electric Roller Furling, Hydraulic Winches, Sails, Canvas, Electronics, Generator, Battery Banks, and Tender along with maintenance items across the Hull, Deck, Rig, Electrical and Mechanical categories. An extensive itemized list can be found at the end of the listing.

## GULFSTAR 60 CENTER COCKPIT CUTTER - AVANTI WALKTHROUGH

---

### MAIN CABIN

The main cabin, as well as the rest of the yacht's interior, features a teak and holly sole and wonderful teak paneling, joinery and appointments. LED lighting and sconce lamps are found throughout the yacht along with ample ventilation from opening ports, overhead hatches and dorade vents. Entering from the cockpit a large cabin opens with the nav station to starboard and

the galley to port. Forward, the salon is separated by an archway and features a U- shaped settee on the port side with a fixed teak table with dual folding leafs. Two folding director's chairs and a folding teak table are found opposite, with shelving and cabinetry behind the settee and along the starboard side. A flat screen TV is mounted on the starboard, forward bulkhead.**NAV STATION**

A desk and pedestal mounted, swivel chair are found at the nav station along with instrumentation and the electrical panels.**GALLEY**

The galley is located opposite the nav station on the port side and offers generous counter space and storage lockers. A triple stainless steel sink is found forward. On the port side a gimbaled, three burner stove/oven is flanked by counters, with cabinets and a convection microwave oven mounted above. Large upper and lower refrigerators follow aft on the port side with a top loading freezer located under the port counter. Opposite is a second counter with storage cabinets below.**ACCOMMODATIONS**

The accommodations are found forward of the salon and aft of the galley. A companionway extends forward from the salon, offering access to the forward cabin, forward port cabin and forward head. The aft companionway is to the rear of the galley and offers access to the aft cabin and the aft starboard cabin.**FORWARD CABIN**

The forward cabin accommodates two with a spacious v-berth. A hanging locker is found on the port side, and a counter with lift top to reveal a sink to starboard. Drawers and lockers are found above and below the counter with additional drawers and storage space located beneath the v-berth.**FORWARD PORT CABIN**

The forward port cabin accommodates two or three with a double bunk configuration. The upper bunk is a single, the lower single bunk with storage beneath can convert to a double. A hanging locker and two smaller lockers are found at the forward bulkhead, while the aft bulkhead features a full length mirror with vanity lamp above.**FORWARD HEAD**

Opposite the forward wet head offers an electric marine toilet, counter and sink with a mirrored locker above, a second bulkhead mounted mirror and a wall mounted shower wand.**AFT CABIN**

The large, full beam, aft cabin accommodates two with a centerline queen berth. Shelving and cabinetry extend along the port and starboard sides of the cabin. There is a fold down desk/vanity on the forward bulkhead with a folding director's chair. A flat screen tv is also mounted on the forward bulkhead. The ensuite head is located forward on the port side and offers an electric marine toilet, counter and sink with a mirrored locker above and a separate shower stall.**AFT STARBOARD CABIN**

The aft starboard cabin accommodates one or two in a single berth that converts to a double. Above the berth a fold down work table, with tool and documents storage above, provides a great work space. A hanging locker and counter are found opposite, with an additional locker located on the starboard side forward. The ensuite head is located forward of the cabin and offers an electric marine toilet, counter and sink with a mirrored locker above and a separate shower

## stall.ENGINE ROOM

The engine room is located behind the cockpit companionway stairs and is accessed via a door in the bulkhead. Additional access is available by lifting the stairs and swinging open the bulkhead. The engine room is spacious, and provides ample room to access the engine and other mechanical systems. The generator is located in a compartment beneath the main cabin sole just in front of the engine room.COCKPIT

The spacious center cockpit, surrounded by a teak capped coaming, offers 270 degree cushioned seating for 10-12 around the helm and a folding inlaid, teak cockpit table. The helm features a destroyer wheel, magnetic compass, instrument cluster and engine controls. Stereo speakers are mounted on the forward bulkhead port and starboard.All lines lead to the cockpit where the yacht can be safely sailed with primary and secondary hydraulic winches found port, starboard and aft of the helm, with two additional winches, (one hydraulic, one manual) on the port cabin top. Sail set is aided by Harken electric roller furlers and an in-boom Leisure Furl main.The cockpit is protected from the sun and sea by a full enclosure; Dodger, Bimini and Eisenglass curtains.AFT DECK

Extending behind the cockpit the aft cabin top accommodates the tender and is followed by the aft deck that is large enough for 4 folding chairs and features a propane grill, swim ladder and shower.FOREDECK

Moving forward the deck is protected by stainless steel bow and stern rails connected by dual lifelines running the length of the deck port and starboard; gates are found at the cockpit, port and starboard and at the stern.Eight hatches are found on deck along with fourteen opening portlights, four fixed portlights and four prisms. Two teak handrails run along the forward cabin top. Inner and outer foresail tracks run along on the port and starboard sides. Cleats are found at the bow midships and stern.The roller mounted anchor is serviced by an electric windless, and washdown spigot. The cutter rig features an illuminated double spreader masts, electric roller furlers, in-boom furling and a hydraulic boom vang and backstay.

## GULFSTAR 60 CENTER COCKPIT CUTTER - AVANTI INVENTORY

GULFSTAR 60 CENTER COCKPIT CUTTER - AVANTI – SALONThe salon is entered from the cockpit, six steps down via a center companionway and features:- Teak paneling and joinery- Teak & holly sole under carpet- Port side U-Settee, seats 6-8, with fixed teak folding table- Storage lockers under settee- Cabinetry behind settee featuring: \* Shelving \* Two over shelf LED lights \* Storage locker \* AC register \* AC control panel- 2 Folding directors chairs; starboard side- Folding teak table; starboard side- Cabinetry starboard side featuring: \* Countertop \* Shelving \* Four storage lockers \* AC register \* Two over shelf LED lights- Insignia flat screen TV- Two Bose stereo speakers- Two fixed portlights- Two opening portlights- Two overhead hatches w/insert shades- Two dorade vents- Overhead hand hold- Four overhead LED lights; 12 vdc- Two bulkhead mounted LED sconces- 5 120 vac outletGULFSTAR 60

**CENTER COCKPIT CUTTER - AVANTI – NAV STATION**The navigation station is on the starboard side next to the cockpit companionway and features:- Teak and holly sole under carpet- Teak joinery- Lift top desk- Two drawers under desk- Fixed pedestal swivel chair- 120 vdc outlet- Two chart racks- Chart light; 12 vdc- Overhead light; 12 vdc- Fixed portlight- Electrical breaker panel; 12 vdc, 120 vac- Electrical system monitor panel- Electrical systems switch panel- Generator control panel- Xantrex Link 2000 R battery charging system control panel - New 09/2018- SIMRAD NSS 12 evo2 GPS, chart plotter, 4G 24 mile radar - New 10/2018- SIMRAD AP 24 auto pilot w/WR 20 N wireless remote control - New 10/2018- Raymarine VHF with remote at helm - New 01/2019- B&G multi-function sailing instrument - New 10/2018- Fusion marine entertainment system control panel; Model MS-AV755- Yuwei 7 inch 2.4GHz Digital Wireless System; screen for boom furler camera- Standard Horizon handheld VHF w/internal GPS; Model HX870- Netgear WiFi router- Electronics charts for Caribbean, Bermuda, North America East Coast, Central and South America Misc. paper charts- Lchatz barometer- Weems & Plath barometer- Weems & Plath ship clock- Ships Clock – quartz- West Marine Raiatae Binoculars; 7/50, 350 feet – 1,000 yards

**GALLEY**The galley is on the port side aft of the salon and extends to the aft companionway. The galley features:- Teak and holly sole- Teak appointed joinery- Four overhead LED lights; 12 vdc - Fixed portlight- Four opening portlights- Overhead hatch w/insert shades

**Port Side:-** Counter top- Over counter LED lighting- Five over counter lockers- Three under counter drawers- Top loading locker- Top loading freezer w/120V Sea Frost cold plates- Upper and lower front loading refrigeration w/120V Sea Frost cold plates- Stainless steel gimbaled three burner Seaward Princess propane stove w/oven- Xintex Propane Fume Detector; Model S-1- Marinetics Propane Solenoid Switch- Over counter Sharp Carousel Convection/Micro Wave Oven; Model R-1874; Magnetron Replaced – New 2020- Over counter wine rack- 120 vac outlet- Paper towel holder- Towel hook

**Starboard Side:-** Countertop- Three under counter lockers - 120 vac outlet- Spice rack- Fire extinguisher- Light switches- Manual bilge pump fitting

**Forward Counter:-** Triple stainless steel sink with hot & cold running water and foot pump spigot - Under sink locker- 120 VAC outlet- Bulkhead mounted fan - A/C Register

**FORWARD COMPANIONWAY**The forward companionway is extends forward of the salon provides access to the forward accommodations. It features:- Access to the forward cabin- Access to the forward port cabin- Access to the forward wet head- Teak paneling and joinery- Teak & holly sole- Tall locker w/shelves- bottom hinged drawer- Overhead LED lights- Overhead hatch w/insert shades

**FORWARD CABIN**The forward cabin is accessed via the forward companionway and includes:- Private cabin with louvered teak door- Teak paneling and joinery- Teak & holly sole- V-berth; (sleeps 2)- 3 Under berth drawers- Under berth storage and utility lockers- Hanging locker w/light 12 vdc- Countertop featuring: \* Under counter sink \* Four under counter drawers \* Two under counter lockers \* Above counter locker- AC Register and control- Aft bulkhead mouted mirror- Overhead light; 12 vdc- Two overhead deck prisms- Two LED reading lamps; 12 vdc- 120 vac outlets- Overhead hatch w/insert shades- Fan; 12 vdc- Chain well access, forward bulkhead

**FORWARD PORT CABIN**The forward port cabin is accessed via the forward companionway and features:- Private cabin with louvered teak door- Teak paneling and joinery- Teak & holly sole- Single lower berth (converts to double), port side; (sleeps 1 or 2)- Single upper berth- Two bulkhead mounted LED lamps above berths - Overhead LED light- Fan; 12 vdc- Two drawers under lower berth- Two lockers above berths- Hanging locker w/shelves- Opening overhead hatch w/insert shades-

Opening portlight- A/C control panel- Aft bulkhead mounted mirror w/vanity light above- Two towel hooks

**FORWARD WET HEAD:**The forward wet head is accessed via the forward companionway and features:- Teak appointed joinery- Raritan electric \ marine toilet- Countertop and sink w/hot and cold running water- Mirrored locker over sink- Under counter locker- Toothbrush holder- Toilet paper holder- Two towel racks- Towel ring- Two LED sconces either side of mirror; 12 vdc- 120 vac outlet- Opening portlight- Shower wand, hot & cold running water- Shower wand mount - Teak floor grate

**AFT COMPANIONWAY**The aft companionway is found aft of the galley and gives access to the aft accommodations. It features:- Access to the aft cabin- Access to the aft starboard cabin- Teak paneling and joinery- Teak & holly sole under carpet- Utility locker- Storage locker w/shelves- Three overhead LED lights- Deck prism- Two hand holds- Two towel hooks- Shore power breaker panel- Opening portlight

**AFT CABIN**The full beam aft cabin is accessed via the aft companionway and features:- Private cabin with louvered teak door- Teak paneling and joinery- Teak & holly sole under carpet- Centerline Queen berth; (sleeps 2)- Two LED sconces, port and starboard of berth; 12 vdc- Two fans, port and starboard of berth; 12 vdc- Sound system control, starboard side of berth- Two Bose speakers, port and starboard of berth- Shelving and storage cubbies port and starboard of berth- Counter tops port and starboard of berth- Three drawers and one storage locker under port counter- Three hanging lockers w/lighting forward of starboard counter- Fold down desk/vanity with vanity lamp above- Clean

**AHull panel above desk/vanity- Insignia flat screen TV, bulkhead mounted above desk/vanity- Three 120 vac outlets- Centerline overhead hand hold- Three overhead LED lights; 12 vdc- Opening overhead hatch w/insert shades- Three opening portlights- Dorade vent- A/C register & return- Ensuite head access; port side forward**

**AFT CABIN ENSUITE HEAD:**The aft cabin ensuite head is on the forward port side of the aft cabin features:- Teak appointed joinery- Jabsco electric \ marine toilet- Separate shower; including: \* Shower wand, hot & cold running water \* Shower wand mount \* Seat \* Shower curtain \* Overhead light; 12 vdc \* Overhead hatch w/insert shades \* Surrounding teak fiddle/hand hold \* Two towel racks \* Two towel hooks \* Teak floor grate- Countertop and sink w/hot and cold running water- Under counter locker- Mirrored locker over sink- Hand hold, right of sink next to shower- Toothbrush holder- Two towel rings- Toilet paper holder- 120 vac outlet- Two LED sconce lamps either side of mirror; 12 vdc- Opening portlight- Dorade vent- Solar vent

**AFT STARBOARD CABIN**The aft starboard cabin is accessed via the aft companionway and features:- Private cabin with louvered teak door- Teak paneling and joinery- Teak & holly sole- Single berth (converts to double), starboard side; (sleeps 1 or 2)- Two bulkhead mounted LED lamps- Two overhead LED lights- Fan; 12 vdc- Counter top w/two shelves above- Three lockers under berth- Two lockers above berth- Hanging locker- Tall storage locker w/shelves- Fold down tool locker/work bench w/led lighting, above berth; contains mscl tools, spares and ships papers/manuals- 120 vac outlet- Shore power breaker panel- Opening overhead hatch w/insert shades- Opening portlight- A/C register & return- Ensuite head access; port side forward

**AFT STARBOARD CABIN ENSUITE HEAD:**The aft starboard cabin ensuite head is forward of the cabin features:- Teak appointed joinery- Jabsco electric \ marine toilet- Separate shower; including: \* Shower wand, hot & cold running water \* Shower wand mount \* Shower curtain \* Overhead light; 12 vdc- Countertop and sink w/hot and cold running water- Mirror over sink- Two towel rings either side of counter- Two sconce lamps either side of mirror; 12 vdc- Under counter locker- Locker above head- Two towel rings either side of counter- Two sconce lamps either side of mirror; 12 vdc- 120 vac outlet- Opening

portlight  
**GULFSTAR 60 CENTER COCKPIT CUTTER - AVANTI – COCKPIT**  
 The center cockpit is midships and features:- Teak appointments- Teak deck w/four scuppers- Seating for 10-12- Cockpit cushions- Pedestal helm with destroyer wheel and instrument cluster- Center mounted teak cockpit table with inlays and cupholder- 2 Stereo speakers- Full Cockpit Enclosure (Bimini-Dodger-Panels) – New 09/2020- Companionway to salon; starboard center forward  
**GULFSTAR 60 CENTER COCKPIT CUTTER - AVANTI – HELM**  
 The helm station is found in the cockpit aft and includes:

- Edson pedestal helm featuring: \* Stainless steel destroyer wheel \* Engine throttle/gear shift \* Ritchie Powerdamp compass \* SIMRAD NSS EVO3 GPS/Plotter/Radar Color Display w/AIS - New 11/2018 \* SIMRAD AP 24 autopilot - New 10/2018 \* Two B&G sailing instrument displays - New 10/2018 \* Side-Power bow thruster control \* Roller furler controls \* Engine kill pull \* Hydraulic winch on/off pull switch \* SIMRAD speaker \* ACR Global Fix I Pro 406 Mhz GPS EPIRB capable of displaying its position on the vessels GPS Plotter (Not set-up presently) - New 2015 \* HydroFix EPIRB hydrostatic release; Model HRU-100 \* Stainless hand hold \* Folding teak table with inlay panels \* Table light (not functioning) \* Cup holder- Main engine control panel- Raymarine VHS repeater unit - New 01/2019- Fusion MS-NRX stereo remote - New 10/2018  
**GULFSTAR 60 CENTER COCKPIT CUTTER - AVANTI – DECK + HULL-**  
 Fiberglass construction- Skeg mounted rudder- Rub rail - Installed 2013- Decks and non-skid painted - 2013- Cockpit teak decking - Installed 2013- Edson pedestal - Installed 2013 \* Single lever engine controls and a \* Stainless steel wheel- Bottom stripped, epoxy barrier coat applied – 06/2014- Bottom painted with Pettit Ultamet SR60 Antifouling (No Blisters) - 05/2020- Cutlass bearing installed - 05/2020- Ground tackle \* Ideal reversible vertical windlass w/bow and helm controls \* 50 kg (110 lb) Bruce anchor w/280 feet of chain \* Fortress FX 23 stowed in lazarette w/approx. 50' Chain & 200' Rode \* Anchor washdown \* Chain well (forward cabin access)- Ventilation \*Stainless steel deck hatches w/insert shades - Two large - Four medium - Two small \* Fourteen stainless steel opening ports \* Four teak dorade boxes w/stainless steel cowl vents and stainless steel guards \* Solar fan ventilator \* Two mushroom ventilators - non-functioning- Four deck prisms; 2 at the bow, 1 in cockpit, one on aft cabin top- Transom mounted pedestal for: \* Gimballed SIMRAD radar dome - New 10/2018 \* KVH TV Sat Dome \* Two GPS antennas \* Two radio/wifi antennas- Stainless steel stern rail and bow pulpit, connected by double life lines with port & starboard gates at the cockpit and stern- Stainless Steel transom swim ladder w/teak treads- Three lazarette storage at transom \* Port locker for propane bottle storage \* One bottle installed, one spare- Hot & cold shower in starboard lazarette locker- Wash down, starboard side, stern- Magna Rail Mounted Propane Grill, starboard stern rail mounted - New 2019- Two outboard engine mounts, stern rail mounted, port and starboard- Tender mounts aft cabin top mounted- Harken Hydraulic Winches - New 2013: \* Two - # 70 ST2SP Primaries \* Two - #60 ST2SP Secondaries \* #50 ST2SP Main Sheet \* #50 ST2SP Main Halyard, Main Furler, Code Zero Halyard w/Sheet Stoppers \* #46 ST2SP Main Sheet Traveler \* #40 ST2SP (Non Hydraulic) Main Furler (Maintain tension on halyard while furling the main sail) \* #28 ST2SP (Non Hydraulic) Barient-Mast Mounted for Genoa, Staysail and Spinnaker Halyard- Winch handles- Harken Inboard and Outboard Track w/Harken Blocks - New 2013- Eight Deck cleats; 2 at bow, 4 mid-ship 2 at stern- Fuel & water fills, holding tank pump-out port- Four deck scuppers- Navigation and anchor lights- Fenders- Dock lines-

Shore power lines- Boat hook- Miscellaneous cleaning supplies & washdown equipment  
**GULFSTAR 60 CENTER COCKPIT CUTTER - AVANTI – RIG**2011 Rig Refit: Mast un-stepped and thoroughly inspected, repainted, re-wired, fitted with a custom mast head fitting, LED lighting installed- Cutter rig- Aluminum double spreader mast \* Spreader LED lights, two on each spreader shining up and two on the lower spreader shining on deck \* LED fore/steaming deck light \* Mashead TriColor; removed for service \* 3 Camlocks & Cleats (foresail, staysail, spinnaker halyards) \* #28 Barent two speed self-tailing winch \* Winch handle holder \* Low light video camera to monitor Leisure-Furl main sail furling system \* Estimated air draft 90 feet- Leisure-Furl boom \* Harken hydraulic boom vang – New 2013, Harken Refurbished 8/2018, Harken Serviced 06/2020- Harken hydraulic backstay adjuster New 2013, Harken Serviced 06/2020- Running backstays- Stainless steel wire standing rigging- Sta-Lok standing rigging terminal end fittings, upper and lower – New 2013- Stainless steel chainplates – New 2011- Roller Furling Systems: \* Leisure Furl in-boom furling/reefing, with electronic angle monitor and video monitor at furling station, helm and nav station \* Harken 3E electric furler w/mechanical over ride - Genoa - New 2013, Harken Rebuilt 2019 \* Harken 2E electric furler w/mechanical over ride - Staysail - New 2013, Rebuilt by Harken 2019  
**GULFSTAR 60 CENTER COCKPIT CUTTER - AVANTI – SAILS & CANVAS**- Mac Boom Furling Mainsail w/Full Battens – New 2013; Bolt Rope – New 2015- Mac 120% Roller Furling Genoa - New 2013- Mac Roller Furling Staysail- Code Zero- Cruising Spinnaker-Rebuilt-Good Condition- Full Cockpit Enclosure (Bimini-Dodger-Panels) – New 09/2020  
**GULFSTAR 60 CENTER COCKPIT CUTTER - AVANTI – ADDITIONAL ELECTRONIC**Electronics not mentioned elsewhere in the listing:- Land & Sea WiFi router w/external WiFi antenna on transom - New 10/2018- SIMRAD WiFi1 GoFree wireless module - New 10/2018- SIMRAD Sonichub marine audio hub maretron NMEA 2000 / USB gateway system - New 10/2018- SIMRAD NEP-2 network expander - New 10/2018- SIMRAD AIS500 w/GPS antenna - New 10/2018- AIRMAR DT800 NMEA2000 depth/temp Transducer - New 10/2018- Four Bose speakers (not connected); model 301 V- Sirius radio & weather antenna – New 10/19- Entire N2K system rewired to NMEA specifications – 10/2018- Engine Room Camera; Specto Technologies, model 627M; displays on the chart plotter  
**GULFSTAR 60 CENTER COCKPIT CUTTER - AVANTI – ELECTRICAL**- 12 vdc electrical system- 120 vdc electrical system- Electrical switching and breaker panel, 12 vdc, 120 vdc- Electrical systems switch panel- Port & starboard shore power inlets, each with one 50 amp/220 vac and 2 20 amp/110 vac connections- Two Shore power breaker panels, one port, one starboard- Westerbeke 10 KW Generator; model 7.5 EDT; Less than 100 hrs - New 2017- Batteries \* House/Bow Thruster Bank - New 06/2020 - 2 Banks of 4 NAPA 6 vdc deep cycle (8 total); model: 8144 N - 120 min @ 75 amps per battery - BCI # BC-2 \* Hydraulic System Bank – New 04/2020 - 4 Duracell 6 vdc deep cycle; p/n: SLIGC110 - 20 AH CAP 216 - 105 Min @ 75 Amps per battery \* Electronics Battery – New 2019 - West Marine 12 vdc; model: 15020209 - MCA @ 32 F 1280 \* Cranking Battery – New 2015 - NAPA 12 vdc; p/n8275 - CA@32 F 1470 - 20 Hr Rate 225 AH \* Spare Cranking Battery - Odyssey Extreme Battery \* Bow Thruster Booster Battery, 12 vdc – New 2020- Xantrex 12V Freedom 458 inverter/charger (House) - New 9/2018- ProMariner ProSport20 plus marine battery charger – New 04/2020- NewMar 24V Phase Three, three stage smart charger; model PT-24-20U (hyd. winches) - New 9/2018- 100 Amp Delco High Output Engine Alternator - New 2015; Rebuilt 2020  
**GULFSTAR 60 CENTER COCKPIT CUTTER - AVANTI – MECHANICAL**- 1994



Perkins Detroit Diesel Engine \* 135HP \* Model: T6.3544, \* 3,275 Approximate engine hours. \* It is not known when the 1994 engine was installed.- Three Blade MAX Prop-New 2011- Sleipner 12V Side Power Bow Thruster- Two sets of two Racor fuel filter/water separators (4 total); Rebuilt 2020 \* Each with Vacuum Guages \* 120 GPH - 454 LPH max each \* Model 75/500MAX \* Main engine- Racor fuel filter/water separator; Rebuilt 2020 \* Generator- Reverso Oil Change System for Engine & Generator; model OP6- Three sea strainers- Dripless Shaft Seal- Engine Room and Generator Room Blowers- Four Independent Fuel Tanks w/Engine Room Manifold and Jabsco Reversible Vane Puppy Transfer Pump; model 18680-1000- Three Marine Reverse Cycle Air Conditioning Units \* Cruisair 10,000 BTU; Forward \* AquaAir 12,000 BTU; Salon; model KH-12 \* Cruisair16,000 BTU; Aft; model WJAH16- AC circulating pump; Dayton Jet Pump; p/n 6K58BG – New 2020- Tecumseh refrigerator and freezer units- Precision Temp in line instant propane hot water Heater; Model RV-550-EC- GLOBAtch Clean-A-Hull Ultrasonic Antifouling System (Transducers Aft Only)- Harken hydraulic winch system - New 2013 \* Spare hydraulic pump; Advanced Motors & Drives; p/n G09-4003- PAR-MAX 3.5 house water system pump – New 2020 \* 3.5 gpm, 40 psi, 12 vdc \* Model 32600-0092- House water system accumulator tank- Whale Gusher Galley fresh water manual foot pump; model MK3- Three Marine Toilets \* Holding tank w/deck pump out or overboard discharge- Eight Caframo 12V fans throughout - New 2015- BILGE PUMPS: \* Jabsco Diaphragm w/float switch.; Engine Room \* Rule 1500 w/Float Sw.; generator room \* Rule 1500 w/Float switch; forward bilge \* Jabsco w/Float switch; Salon \* Jabsco diaphragm sump pump; forward \* Whale 220 sump pump w/float Switch; engine room \* Bilge Systems Dry Bilge Machine; Series 4 - Locations Set-Up to Discharge any Bilge Water Every Four Hours \* Manual bilge pump – in galley- High water alarm- Water maker plumbing and electrical service; no watermaker installedGULFSTAR 60 CENTER COCKPIT CUTTER - AVANTI – SAFETY- ACR Global Fix I Pro 406 Mhz GPS EPIRB- Winslow life raft; certified thru 07/2023- Engine room automatic fire suppression system- Kidde generator compartment automatic fire suppression system- Four Kidde three pound dry chemical fire extinguisher; type B:C Size I, class 1-A, 10- B:C- Horse Shoe Type IV PFD w/West Marine throw rope- Seven off shore life jackets, type 1 pfd; adult- Off shore life jacket, type 1 pfd; child- High speed water sports vest floatation aid, type III pfd; XXX-Large- Weems & Plath SOS distress light, night visual distress signal for boats; model C- 1001- Super Blast hand held marine signal horn- West Marine medical kit for crew of 1 – 8; model 5.0- MarineGuard security system- Parker Hannifin propane natural gas/LP safety valve- Manual bilge pump- Emergency tiller- Miscl. wood seacock plugsGULFSTAR 60 CENTER COCKPIT CUTTER - AVANTI – TENDER- 2019 Zodiac RIB; 10 feet – New 2019- Mercury 6 hp four stroke outboard engine; Model 1FX6201EK – New 2020- Tohatsu 3.5 hp four stroke back-up outboard engine; Model MFS3.5B – New 2019 - Tender foot pump

## **GULFSTAR 60 CENTER COCKPIT CUTTER - AVANTI MAINTENANCE / UPGRADE LIST:**

- 2011 Rig Refit: Mast un-stepped and thoroughly inspected, repainted, re-wired and fitted with a custom mast head fitting, three sets of LED lights, two on each spreader shining up and two on

the lower spreader shining on deck, along with a LED fore deck light.

- All SS Chain Plates - New 2011- Three Blade MAX Prop - New 2011- Sta-Lok Standing Rigging Terminal End Fittings Upper & Lower - New 2013- Harken 3E Electric Furler w/Mechanical Over Ride-Genoa - New 2013- Harken 2E Electric Furler w/Mechanical Over-Ride - Staysail - New 2013- Mac Boom Furling Mainsail w/Full Battens – New 2013 and new Bolt Rope -2015- Mac 120% Roller Furling Genoa – New 2013- Harken Hydraulic Winches - New 2013- Harken Back Stay Adjuster – New 2013- Harken Inboard and Outboard Track w/Harken Blocks - New 2013- Rub Rail Installed - 2013- Decks & non-skid painted - 2013- Cockpit teak decking - Installed - 2013- New Edson pedestal - Installed - 2013- Bottom stripped, epoxy barrier coated – 06/2014- ACR EPIRB at Helm Capable of Displaying its position on the vessels GPS Plotter (Not set-up presently) - New 2015- 100 Amp Delco High Output Engine Alternator - New 2015- Westerbeke 10 KW Generator - New 2017 – Less than 100 hrs 2018 Complete electronics upgrade: \* SIMRAD NSS 12 evo2 GPS, Chart Plotter, 4G 24 Mile Radar - New 10/2018 \* SIMRAD AP 24 Auto Pilot w/WR 20 NWireless Remote Control - New 10/2018 \* SIMRAD RS-90 VHF DSC, NMEA 2000 Radio w remote at helm - New 12/2018 \* FUSION AV755 Bluetooth Marine Stereo w/ KMA Amplifier - New 10/2018 \* SIMRAD WiFi1 GoFree Wireless Module - New 10/2018 \* SIMRAD NEP-2 Network Expander - New 10/2018 \* SIMRAD AIS500 w/GPS Antenna - New 10/2018 \* AIRMAR DT800 NMEA2000 Depth/Temp Transducer - New 10/2018 \* B&G Multi-Function Sailing Instrument - New 10/2018 \* SIMRAD Sonichub Marine Audio Hub Throughout Maretron NMEA 2000 / USB Gateway System - New 10/2018 \* SIMRAD NSS EVO3 GPS/Plotter/Radar Color Display w/AID - New 2018 \* SIMRAD AP 24 Autopilot - New 10/2018 \* SIMRAD RS-90 Remote VHF - New 10/2018 \* Two B&G Sailing Instrument Displays - New 10/2018 \* Fusion MS-NRX Stereo Remote - New 10/2018 \* SIMRAD Radar Dome - New 10/2018 \* Bose Speakers – 2 in Cockpit, 4 below decks (not connected); model 301 V – New 10/2018 \* Land & Sea WiFi Router w/ External WiFi Antenna on Transo - New 10/2018 \* SIRIUS Radio and Weather Antenna - New 10/2018 \* Entire N2K System Rewired to NMEA Specifications - 10/2018- Xantrex 12V Freedom 458 Inverter/Charger (House) - New 9/2018- Xantrex Link 2000 R (Nav Station) - New 9/2018- NewMar 24V Model PT-24-20U Charger (Hyd. Winches) - New 9/2018- Harken Hydraulic Boom Vang – Refurbished by Harken 8/2018- Back Stay Adjuster - Refurbished by Harken 8/2018- Cutlass Bearing - New 2018- Brightwork Refinished – Awlgrip AWL Wood – 8/2018- Forestay - New 2019- Raymarine VHF Radio w/remote at helm; New 01/2019- Harken 3E Electric Furler w/mechanical over-ride - Genoa - Rebuilt by Harken 2019 - Harken 2E Electric Furler w/mechanical over-ride - Staysail - Rebuilt by Harken 2019 - Hydraulic System Motor - New 2019- Zodiac 10' RIB - New 2019- 3.5 HP Tohatsu Outboard - New 2019- Magna Rail Mounted Propane Grill - New 2019- Electronics Battery Bank – New 2019- House Battery Banks – New 06/2020- Hydraulic System Battery Bank – New 04/2020- ProMariner ProSport20 plus marine Battery Charger – New 04/2020- Full Cockpit Enclosure (Bimini-Dodger-Panels) – New 09/2020- Bottom Painted with Pettit Ultima SR60 (no blisters) – 05/2020- Harken Hydraulic Boom Vang – Serviced by Harken 06/2020- Hydraulic Winch System Serviced and Fluid Replaced – 08/2020- Wiring System Professionally Inspected – 2020- 2 Flat Screen TV's – New 11/2020- Sharp Microwave Magnetron – New 2020- 6 HP Mercury Outboard – New 07/2020- 100 Amp Delco High Output Engine Alternator - Rebuilt 2020- Main Engine Starter Motor – New 2020- Main Engine Hoses and Clamps – New 2020-

Racor Fuel Filters – Rebuilt 2020- Exhaust Elbow – New 2020- House Water Pump – New 2020- Air Conditioning Water Pump – New 2020- Galley Sink Drain Hose and Shut Off Valve – New 2020

## **DISCLAIMER**

---

The Company offers the details of this vessel in good faith but cannot guarantee or warrant the accuracy of this information nor warrant the condition of the vessel. A buyer should instruct his agents, or his surveyors, to investigate such details as the buyer desires validated. This vessel is offered subject to prior sale, price change, or withdrawal without notice.

## **Исключения**

---

При продаже яхты исключаются личные вещи владельца.

## **Отказ от ответственности**

---

Компания предоставляет описание судна или яхты добросовестно, но не может гарантировать точность этой информации, а также не ручается за техническое состояние. Покупатель должен проинструктировать своих агентов или оценщиков исследовать представленную информацию более подробно, по собственному желанию. Продажа судна или яхты, изменение цены или снятие с продажи будет происходить без предварительного уведомления.

# ФОТОГРАФИИ

**Gulfstar 60 - Avanti - - 1**



**Gulfstar 60 - Avanti - - 2**



**Gulfstar 60 - Avanti - - 3**



**Gulfstar 60 - Avanti - - 4**



**Gulfstar 60 - Avanti - - 5**



**Gulfstar 60 - Avanti - - 6**





**Gulfstar 60 - Avanti - - 7**



**Gulfstar 60 - Avanti - - 8**



**Gulfstar 60 - Avanti - - 9**



**Gulfstar 60 - Avanti - - 10**



**Gulfstar 60 - Avanti - - 11**



**Gulfstar 60 - Avanti - - 12**





**Gulfstar 60 - Avanti - - 13**



**Gulfstar 60 - Avanti - - 14**



**Gulfstar 60 - Avanti - - 15**



**Gulfstar 60 - Avanti - - 16**



**Gulfstar 60 - Avanti - - 17**



**Gulfstar 60 - Avanti - - 18**





**Gulfstar 60 - Avanti - - 19**



**Gulfstar 60 - Avanti - - 20**



**Gulfstar 60 - Avanti - - 21**



**Gulfstar 60 - Avanti - - 22**



**Gulfstar 60 - Avanti - - 23**



**Gulfstar 60 - Avanti - - 24**





**Gulfstar 60 - Avanti - - 25**



**Gulfstar 60 - Avanti - - 26**



**Gulfstar 60 - Avanti - - 27**



**Gulfstar 60 - Avanti - - 28**



**Gulfstar 60 - Avanti - - 29**



**Gulfstar 60 - Avanti - - 30**





**Gulfstar 60 - Avanti - - 31**



**Gulfstar 60 - Avanti - - 32**



**Gulfstar 60 - Avanti - - 33**



**Gulfstar 60 - Avanti - - 34**



**Gulfstar 60 - Avanti - - 35**



**Gulfstar 60 - Avanti - - 36**



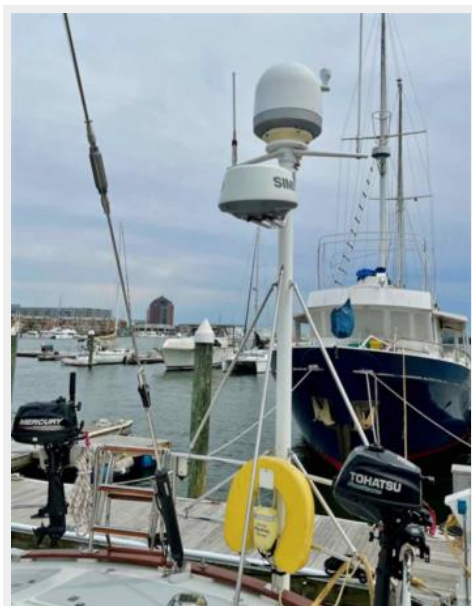
**Gulfstar 60 - Avanti - - 37**



**Gulfstar 60 - Avanti - - 38**



**Gulfstar 60 - Avanti - - 39**



**Gulfstar 60 - Avanti - - 40**





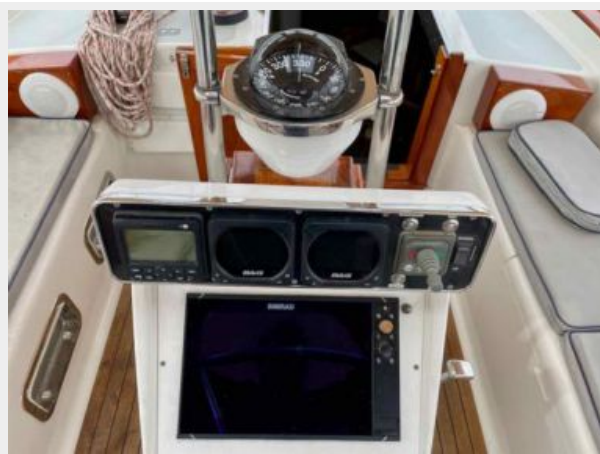
**Gulfstar 60 - Avanti - - 41**



**Gulfstar 60 - Avanti - - 42**



**Gulfstar 60 - Avanti - - 43**



**Gulfstar 60 - Avanti - - 44**



**Gulfstar 60 - Avanti - - 45**



**Gulfstar 60 - Avanti - - 46**





**Gulfstar 60 - Avanti - - 47**



**Gulfstar 60 - Avanti - - 48**



**Gulfstar 60 - Avanti - - 49**



**Gulfstar 60 - Avanti - - 50**



**Gulfstar 60 - Avanti - - 51**



**Gulfstar 60 - Avanti - - 52**





**Gulfstar 60 - Avanti - - 53**



**Gulfstar 60 - Avanti - - 54**



**Gulfstar 60 - Avanti - - 55**



**Gulfstar 60 - Avanti - - 56**



**Gulfstar 60 - Avanti - - 57**



**Gulfstar 60 - Avanti - - 58**



**Gulfstar 60 - Avanti - - 59**



**Gulfstar 60 - Avanti - - 60**



**Gulfstar 60 - Avanti - - 61**



**Gulfstar 60 - Avanti - - 62**



**Gulfstar 60 - Avanti - - 63**



**Gulfstar 60 - Avanti - - 64**





**Gulfstar 60 - Avanti - - 65**



**Gulfstar 60 - Avanti - - 66**



**Gulfstar 60 - Avanti - - 67**



**Gulfstar 60 - Avanti - - 68**



**Gulfstar 60 - Avanti - - 69**



**Gulfstar 60 - Avanti - - 70**



**Gulfstar 60 - Avanti - - 71**



**Gulfstar 60 - Avanti - - 72**



**Gulfstar 60 - Avanti - - 73**



**Gulfstar 60 - Avanti - - 74**





**Gulfstar 60 - Avanti - - 75**



**Gulfstar 60 - Avanti - - 76**



**Gulfstar 60 - Avanti - - 77**



**Gulfstar 60 - Avanti - - 78**



**Gulfstar 60 - Avanti - - 79**



**Gulfstar 60 - Avanti - - 80**



**Gulfstar 60 - Avanti - - 81**



**Gulfstar 60 - Avanti - - 82**



**Gulfstar 60 - Avanti - - 83**



**Gulfstar 60 - Avanti - - 84**





**Gulfstar 60 - Avanti - - 85**



**Gulfstar 60 - Avanti - - 86**



**Gulfstar 60 - Avanti - - 88**



**Gulfstar 60 - Avanti - - 87**



**Gulfstar 60 - Avanti - - 89**



**Gulfstar 60 - Avanti - - 90**



**Gulfstar 60 - Avanti - - 91**



**Gulfstar 60 - Avanti - - 92**



**Gulfstar 60 - Avanti - - 93**



**Gulfstar 60 - Avanti - - 94**





**Gulfstar 60 - Avanti - - 95**



**Gulfstar 60 - Avanti - - 96**



**Gulfstar 60 - Avanti - - 97**



**Gulfstar 60 - Avanti - - 98**



**Gulfstar 60 - Avanti - - 99**



**Gulfstar 60 - Avanti - - 100**



**Gulfstar 60 - Avanti - - 101**



**Gulfstar 60 - Avanti - - 102**



**Gulfstar 60 - Avanti - - 103**



**Gulfstar 60 - Avanti - - 104**





**Gulfstar 60 - Avanti - - 105**



**Gulfstar 60 - Avanti - - 106**



**Gulfstar 60 - Avanti - - 107**



**Gulfstar 60 - Avanti - - 108**



**Gulfstar 60 - Avanti - - 110**

**Gulfstar 60 - Avanti - - 109**



**Gulfstar 60 - Avanti - - 111**



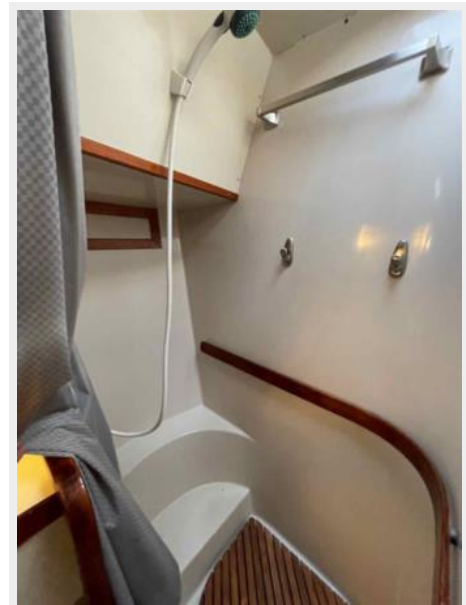
**Gulfstar 60 - Avanti - - 112**



**Gulfstar 60 - Avanti - - 113**



**Gulfstar 60 - Avanti - - 114**





**Gulfstar 60 - Avanti - - 115**



**Gulfstar 60 - Avanti - - 116**



**Gulfstar 60 - Avanti - - 117**



**Gulfstar 60 - Avanti - - 118**



**Gulfstar 60 - Avanti - - 119**



**Gulfstar 60 - Avanti - - 120**



Gulfstar 60 - Avanti - - 121



Gulfstar 60 - Avanti - - 122



Gulfstar 60 - Avanti - - 124



Gulfstar 60 - Avanti - - 123





Gulfstar 60 - Avanti - - 125



Gulfstar 60 - Avanti - - 126



Gulfstar 60 - Avanti - - 127



Gulfstar 60 - Avanti - - 128



Gulfstar 60 - Avanti - - 129



Gulfstar 60 - Avanti - - 130



Gulfstar 60 - Avanti - - 132



Gulfstar 60 - Avanti - - 131

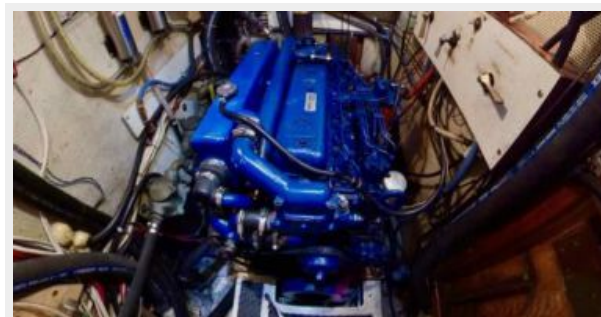




**Gulfstar 60 - Avanti - - 133**



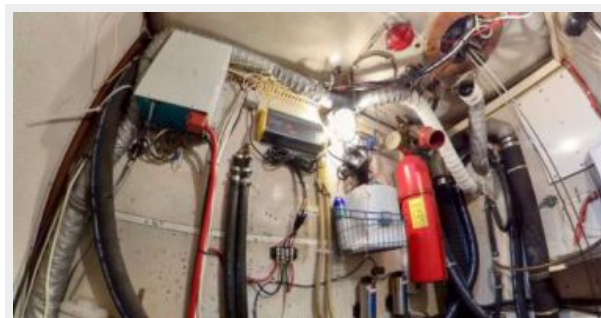
**Gulfstar 60 - Avanti - - 134**



**Gulfstar 60 - Avanti - - 135**



**Gulfstar 60 - Avanti - - 136**



# КОНТАКТЫ

---

Андрей Шестаков (Andrey Shestakov) – ведущий яхтенный брокер отдела продаж яхт и судов компании Shestakov Yacht Sales Inc. Официальный представитель Shestakov Yacht Sales Inc. для русскоговорящих клиентов в центральном офисе компании в Майами/Форт Лодердейл/Флорида/США.

## Контактная информация

---

Email: [andrey@shestakovyachtsales.com](mailto:andrey@shestakovyachtsales.com)

Web: [shestakovyachtsales.com](http://shestakovyachtsales.com)

## Телефоны

---

Краснодарский край: **+7(918)465-66-44**

США, Майами, Флорида: **+1(954)274-4435**

## Время работы

---

Понедельник – Суббота: **9:00 - 21:00**  
EDT

Воскресенье: **Закрито**

## Адрес

---



Harbour Towne Marina, 850 NE 3rd St,  
STE 213, Dania, FL 33004