

420 FLY — GALEON



Судостроитель: GALEON

Год постройки: 2016

Модель: Моторная яхта

Цена: **ЦЕНА ЯХТЫ ПО ЗАПРОСУ**

Местонахождение: United States

Длина общая: 43' 6" (13.26m)

Ширина: 13' 8" (4.17m)

Макс. осадка: 3' 9" (1.14m)

Купить 420 Fly — GALEON а также выбрать подходящую вам яхту из нашего каталога яхт вам поможет опытный яхтенный брокер Андрей Шестаков. На сегодняшний день компания Shestakov Yacht Sales Inc. имеет большое количество яхт в собственном списке продаж, а также тесно сотрудничает со всеми крупными яхтенными производителями по всему миру.

Для того чтобы купить яхту 420 Fly — GALEON а также проконсультироваться по любому вопросу связанному с покупкой, продажей, чартером яхт позвоните по телефону **+7(918)465-66-44**.

ОГЛАВЛЕНИЕ

ОГЛАВЛЕНИЕ	2
ХАРАКТЕРИСТИКИ	5
Обзор	5
Основная информация	5
Размеры	5
Размещение	5
Корпус и палуба	5
Информация о двигателе	5
ПОДРОБНОЕ ОПИСАНИЕ	6
Hull and Deck	6
Cockpit	6
Stern	6
Flybridge	6
Salon	7
Galley	7
Lower Helm	7
Standard Equipment	8
Исключения	8
Отказ от ответственности	8
ФОТОГРАФИИ	9
42_galeon_queen_of_the_nile_III_port_profile_2	9
42_galeon_queen_of_the_nile_III_port_profile_3	9
42_galeon_queen_of_the_nile_III_bow_1	9
42_galeon_queen_of_the_nile_III_bow_2	9
42_galeon_queen_of_the_nile_III_bow_3	9
42_galeon_queen_of_the_nile_III_bow_4	9
42_galeon_queen_of_the_nile_III_stern_1	10
42_galeon_queen_of_the_nile_III_bow_5	10

42_galeon_queen_of_the_nile_III_stern_2	10
42_galeon_queen_of_the_nile_III_flybridge_1	10
42_galeon_queen_of_the_nile_III_flybridge_11	10
42_galeon_queen_of_the_nile_III_flybridge_10	10
42_galeon_queen_of_the_nile_III_flybridge_12	11
42_galeon_queen_of_the_nile_III_flybridge_13	11
42_galeon_queen_of_the_nile_III_flybridge_14	11
42_galeon_queen_of_the_nile_III_flybridge_2	11
42_galeon_queen_of_the_nile_III_flybridge_3	11
42_galeon_queen_of_the_nile_III_flybridge_4	11
42_galeon_queen_of_the_nile_III_flybridge_6	11
42_galeon_queen_of_the_nile_III_flybridge_5	11
42_galeon_queen_of_the_nile_III_flybridge_8	12
42_galeon_queen_of_the_nile_III_flybridge_7	12
42_galeon_queen_of_the_nile_III_flybridge_9	12
42_galeon_queen_of_the_nile_III_aft_deck_1	12
42_galeon_queen_of_the_nile_III_aft_deck_2	12
42_galeon_queen_of_the_nile_III_aft_deck_3	12
42_galeon_queen_of_the_nile_III_aft_deck_4	12
42_galeon_queen_of_the_nile_III_aft_deck_5	12
42_galeon_queen_of_the_nile_III_aft_deck_6	13
42_galeon_queen_of_the_nile_III_aft_deck_7	13
42_galeon_queen_of_the_nile_III_salon_1	13
42_galeon_queen_of_the_nile_III_aft_deck_8	13
42_galeon_queen_of_the_nile_III_salon_2	13
42_galeon_queen_of_the_nile_III_salon_3	13
42_galeon_queen_of_the_nile_III_salon_4	13
42_galeon_queen_of_the_nile_III_salon_5	13
42_galeon_queen_of_the_nile_III_galley_1	14

42_galeon_queen_of_the_nile_III_galley_2	14
42_galeon_queen_of_the_nile_III_galley_4	14
42_galeon_queen_of_the_nile_III_galley_3	14
42_galeon_queen_of_the_nile_III_helm_1	14
42_galeon_queen_of_the_nile_III_helm_2	14
42_galeon_queen_of_the_nile_III_helm_3	15
42_galeon_queen_of_the_nile_III_helm_4	15
42_galeon_queen_of_the_nile_III_master_stateroom_1	15
42_galeon_queen_of_the_nile_III_helm_5	15
42_galeon_queen_of_the_nile_III_master_stateroom_2	15
42_galeon_queen_of_the_nile_III_master_stateroom_3	15
42_galeon_queen_of_the_nile_III_master_head_1	16
42_galeon_queen_of_the_nile_III_master_stateroom_4	16
42_galeon_queen_of_the_nile_III_master_head_2	16
42_galeon_queen_of_the_nile_III_starboard_guest_stateroom_1	16
42_galeon_queen_of_the_nile_III_guest_head_1	16
42_galeon_queen_of_the_nile_III_guest_head_2	16
42_galeon_queen_of_the_nile_III_port_guest_stateroom_1	17
42_galeon_queen_of_the_nile_III_port_guest_stateroom_2	17
42_galeon_queen_of_the_nile_III_port_guest_stateroom_3	17
КОНТАКТЫ	18
Контактная информация	18
Телефоны	18
Время работы	18
Адрес	18

ХАРАКТЕРИСТИКИ

Обзор

If you are in the market for a 40-foot flybridge motor yacht then this 42 Galeon is a must-see. The boat is powered by twin Volvo Penta D-6 (435 Hp each) engines with straight shafts. It is the perfect boat to do trips to the islands with the family and still small enjoy to comfortably enjoy inlet cruises/ sand bar trips. It has dual helms with bow thrusters, so no matter the weather or conditions, you will be able to be comfortable underway. The boat is in Marco Island and available for showings, call the listing broker for more info.

Основная информация

Тип судна: Моторная яхта

Модельный год: 2016

Год постройки: 2016

Страна: United States

Размеры

Длина общая: 43' 6" (13.26m)

Ширина: 13' 8" (4.17m)

Макс. осадка: 3' 9" (1.14m)

Размещение

Всего кают: 3

Всего ком. состава: 2

Корпус и палуба

Материал корпуса: Fiberglass

Информация о двигателе

Двигатели: 2

Производитель: Volvo Penta

Модель: D6

Тип двигателя: Inboard

Тип топлива: Diesel

ПОДРОБНОЕ ОПИСАНИЕ

Hull and Deck

- Bottom Paint
- Bow deck rail, 316 stainless steel with side access
- Cleats, stainless steel 11.5" (6)
- Fiberglass engine room air intakes and stainless steel outputs
- Flooring, molded non-skid (bow and side deck)
- Handrails, 316 stainless steel (cockpit, side deck, and sunpad)
- Hatch, foredeck square with integrated skylights
- Horn, electric
- Lights, navigation

Cockpit

- Door, Saloon Entrance – three-part, folding, aluminum, and glass, lockable with a flush threshold
- Handrails, 316 stainless steel
- Hatch, Engine Room Access, with gas actuators
- Lighting, indirect LED (cockpit and stairs)
- Lighting, overhead LED
- Self-draining
- Sofa, sliding L-shape, upholstered with sun pad conversion, stainless steel rail, and large storage below for fenders & lines
- Stairs, access to flybridge (molded fiberglass, with teak treads and stainless steel handrail)
- Stairs, access to walk-around (molded, port and starboard)
- Teak, cockpit sole

Stern

- Cleats, stainless steel 10.5" (2)
- Door, cockpit access (fiberglass, port side) Lighting, indirect LED
- Shore power inlet, 240V Shower, freshwater (hot & cold)
- Swim platform, extended with teak decking and collapsible three-step stainless steel swim ladder

Flybridge

- Flooring, molded non-skid Handrails, 316 stainless steel helm station
- Compass
- Cupholders
- Helm Seat, doublewide
- Outlets, USB
- Station instruments and controls
- 7" Volvo Electronic Vessel Control (EVC) Panel Switches
- Fire System Monitor
- Engine Ignition panel
- Trim Tab Control Panel
- Dual Lever Control, EVC
- Steering wheel, exclusive Galeon
- Stereo, remote control
- Fiberglass arch with foldable, stainless steel radar mast

- Hatch, flybridge access - watertight plexiglass, Light, anchor / stern
- Lighting, indirect LED Outlet, 120V GFI
- Seating, large L-shape upholstered sofa with storage lockers below
- Seating, port double sofa adjacent to helm
- Speakers (2)
- Sun pad, forward of port double seat
- Table, fiberglass with drink holders
- Venturi wind deflector, plexiglass with 316 stainless steel rails
- Wetbar with fiberglass sink, retractable faucet, and storage

Salon

- Carbon Monoxide Detector
- Flooring, carpet runners
- Foldable hi-lo wood dining table with cushion filler
- Hatch, secondary engine room access
- Lighting, overhead LED with square wood ceiling accent Outlet, 120V
- Seating, U-shape upholstered sofa with convertible aft segment and storage below Seating, opposing sofa
- Side windows, panoramic
- Stereo, Fusion 12V AM/FM with Bluetooth module and two speakers
- Storage, side cupboard with plexiglass bottle holders
- Storage, shelf with stainless steel rail

Galley

- Cooktop, 240V two-burner induction Corian worktop and finishings
- Sink, twin stainless steel with chrome faucet and Corian cover
- Lighting, overhead LED
- Microwave, 120V
- Outlet, 120V GFI Protected
- Refrigerator, 12V with freezer compartment (4.6 ft³ / 130L)
- Refrigerator, 12V drawer (1.1 ft³ / 30L)
- Storage, general cabinets, and drawers
- Storage, cupboards with sliding plexiglass doors, and stainless steel rail
- Trash receptacle with Corian cover
- Window, electric opening sliding (port side)
- Wooden floor

Lower Helm

- A/C vents
- Cupholders
- Handrails, leather wrap stainless steel
- Helm Seat, doublewide upholstered sofa with armrests, flip-up bolsters, wooden footrest
- Outlets, USB
- Station Instruments and controls
- Volvo 7" digital Electronic Vessel Control (EVC) Panel
- Compass
- Switches

- Fire System Monitor
- Engine Start Panel with electronic key fobs
- Trim Tab Control Panel
- Dual Lever Control, EVC
- Alarm, High Water – bilge, cabin
- Galeon 420 model with exterior light indicators
- Steering wheel, exclusive Galeon
- Window, electric opening (starboard side)
- Windscreen wipers, synchronized twin with front window washing system and defroster outlets

Standard Equipment

- 3 Staterooms, 2 Heads
- 240v Electrical System Generator
- Air Conditioner
- Engine & Generator Fuel Fill
- Fire Extinguishing System
- Carbon Monoxide Monitors
- Windlass
- Spotlight
- Closed Bow Rail W/integrated Access
- Hydraulic Steering System
- Bow Thruster
- Stainless Steel Fuel Tank
- Dockside Water Connection
- Water Heater
- Bottom Paint
- Fixed Transom Platform
- Cockpit & Platform Exterior Teak
- Lower Helm Station W/doublewide Seat
- Flybridge Helm Station W/doublewide Seat
- Digital Helm Gauges
- P&S Electric Opening Side Window
- Single Pane Fwd Windshield
- Windshield Defroster Wipe

Исключения

При продаже яхты исключаются личные вещи владельца.

Отказ от ответственности

Компания предоставляет описание судна или яхты добросовестно, но не может гарантировать точность этой информации, а также не ручается за техническое состояние. Покупатель должен проинструктировать своих агентов или оценщиков исследовать представленную информацию более подробно, по собственному желанию. Продажа судна или яхты, изменение цены или снятие с продажи будет происходить без предварительного уведомления.

ФОТОГРАФИИ

42_galeon_queen_of_the_nile_III_port_profile_2



42_galeon_queen_of_the_nile_III_port_profile_3



42_galeon_queen_of_the_nile_III_bow_1



42_galeon_queen_of_the_nile_III_bow_2



42_galeon_queen_of_the_nile_III_bow_3



42_galeon_queen_of_the_nile_III_bow_4



42_galeon_queen_of_the_nile_III_stern_1



42_galeon_queen_of_the_nile_III_bow_5



42_galeon_queen_of_the_nile_III_stern_2



42_galeon_queen_of_the_nile_III_flybridge_1



42_galeon_queen_of_the_nile_III_flybridge_11



42_galeon_queen_of_the_nile_III_flybridge_10



42_galeon_queen_of_the_nile_III_flybridge_12



42_galeon_queen_of_the_nile_III_flybridge_13



42_galeon_queen_of_the_nile_III_flybridge_14



42_galeon_queen_of_the_nile_III_flybridge_2



42_galeon_queen_of_the_nile_III_flybridge_3



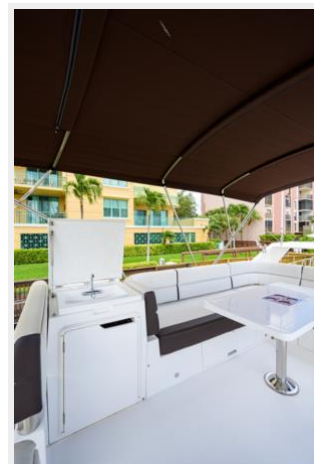
42_galeon_queen_of_the_nile_III_flybridge_4



42_galeon_queen_of_the_nile_III_flybridge_5



42_galeon_queen_of_the_nile_III_flybridge_6



42_galeon_queen_of_the_nile_III_flybridge_8



42_galeon_queen_of_the_nile_III_flybridge_7



42_galeon_queen_of_the_nile_III_flybridge_9



42_galeon_queen_of_the_nile_III_aft_deck_1



42_galeon_queen_of_the_nile_III_aft_deck_2



42_galeon_queen_of_the_nile_III_aft_deck_3



42_galeon_queen_of_the_nile_III_aft_deck_4



42_galeon_queen_of_the_nile_III_aft_deck_5



42_galeon_queen_of_the_nile_III_aft_deck_6



42_galeon_queen_of_the_nile_III_aft_deck_7



42_galeon_queen_of_the_nile_III_aft_deck_8



42_galeon_queen_of_the_nile_III_saloon_1



42_galeon_queen_of_the_nile_III_saloon_2



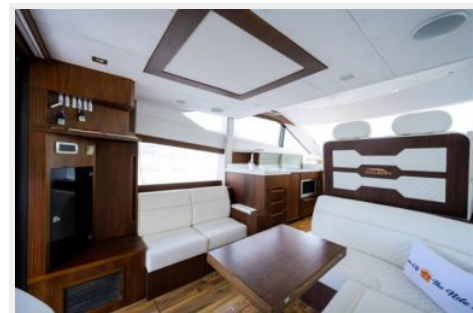
42_galeon_queen_of_the_nile_III_saloon_3



42_galeon_queen_of_the_nile_III_saloon_4



42_galeon_queen_of_the_nile_III_saloon_5



42_galeon_queen_of_the_nile_III_galley_1



42_galeon_queen_of_the_nile_III_galley_2



42_galeon_queen_of_the_nile_III_galley_3



42_galeon_queen_of_the_nile_III_galley_4



42_galeon_queen_of_the_nile_III_helm_1



42_galeon_queen_of_the_nile_III_helm_2



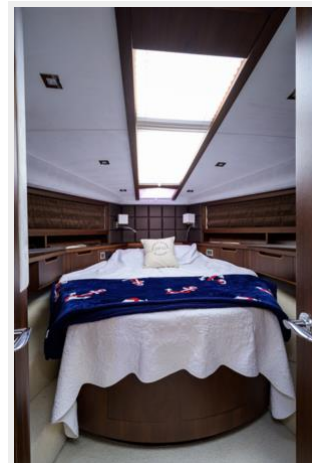
42_galeon_queen_of_the_nile_III_helm_3



42_galeon_queen_of_the_nile_III_helm_4



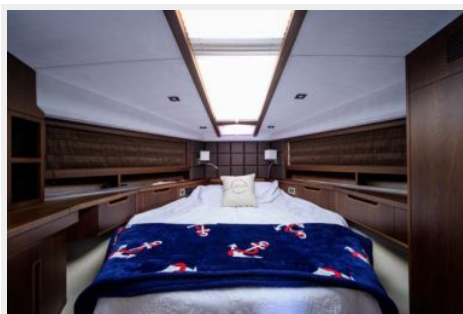
42_galeon_queen_of_the_nile_III_master_stateroom_1



42_galeon_queen_of_the_nile_III_helm_5



42_galeon_queen_of_the_nile_III_master_stateroom_2



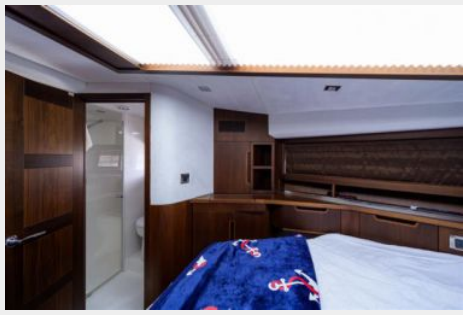
42_galeon_queen_of_the_nile_III_master_stateroom_3



42_galeon_queen_of_the_nile_III_master_head_1



42_galeon_queen_of_the_nile_III_master_stateroom_4



42_galeon_queen_of_the_nile_III_master_head_2 42_galeon_queen_of_the_nile_III_starboard_guest_stateroom_1



42_galeon_queen_of_the_nile_III_guest_head_1



42_galeon_queen_of_the_nile_III_guest_head_2



42_galeon_queen_of_the_nile_III_port_guest_stateroom_1 42_galeon_queen_of_the_nile_III_port_guest_stateroom_2



42_galeon_queen_of_the_nile_III_port_guest_stateroom_3



КОНТАКТЫ

Андрей Шестаков (Andrey Shestakov) – ведущий яхтенный брокер отдела продаж яхт и судов компании Shestakov Yacht Sales Inc. Официальный представитель Shestakov Yacht Sales Inc. для русскоговорящих клиентов в центральном офисе компании в Майами/Форт Лодердейл/Флорида/США.

Контактная информация

Email:
andrey@shestakovyachtsales.com

Web: shestakovyachtsales.com

Телефоны

Краснодарский край: **+7(918)465-66-44**

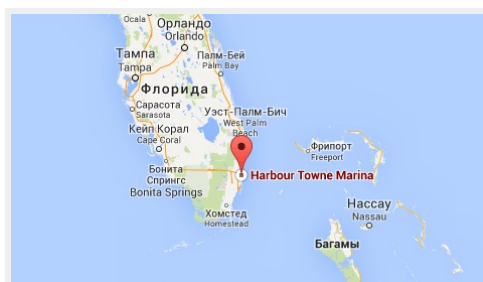
США, Майами, Флорида: **+1(954)274-4435**

Время работы

Понедельник – Суббота: **9:00 - 21:00**
EDT

Воскресенье: **Закрито**

Адрес



Harbour Towne Marina, 850 NE 3rd St,
STE 213, Dania, FL 33004