

LADY BUG VII — HERITAGE YACHTS EAST



Судостроитель:
HERITAGE YACHTS EAST

Год постройки: 2005

Модель: Trawler Yacht

Цена: **ЦЕНА ЯХТЫ ПО ЗАПРОСУ**

Местонахождение: United States

Длина общая: 36' 0" (10.97m)

Ширина: 12' 7" (3.84m)

Мин. осадка: 3' 8" (1.12m)

Купить Lady Bug VII — HERITAGE YACHTS EAST а также выбрать подходящую вам яхту из нашего каталога яхт вам поможет опытный яхтенный брокер Андрей Шестаков. На сегодняшний день компания Shestakov Yacht Sales Inc. имеет большое количество яхт в собственном списке продаж, а также тесно сотрудничает со всеми крупными яхтенными производителями по всему миру. Для того чтобы купить яхту Lady Bug VII — HERITAGE YACHTS EAST а также проконсультироваться по любому вопросу связанному с покупкой, продажей, чартером яхт позвоните по телефону **+7(918)465-66-44**.

ОГЛАВЛЕНИЕ

| | |
|---|----|
| ОГЛАВЛЕНИЕ | 2 |
| ХАРАКТЕРИСТИКИ | 8 |
| Обзор | 8 |
| Основная информация | 8 |
| Размеры | 8 |
| Скорость, вместимость и масса | 8 |
| Размещение | 9 |
| Корпус и палуба | 9 |
| Информация о двигателе | 9 |
| ПОДРОБНОЕ ОПИСАНИЕ | 10 |
| MAIN DESCRIPTION | 10 |
| 36 Heritage East Main Salon | 10 |
| 36 Heritage East Lower Helm Station | 11 |
| 36 Heritage East Galley | 11 |
| 36 Heritage East Master Stateroom | 12 |
| 36 Heritage East Master Head | 12 |
| 36 Heritage East Forward Stateroom | 12 |
| 36 Heritage East Forward Head | 13 |
| 36 Heritage East Foredeck | 13 |
| 36 Heritage East Aft Deck | 14 |
| 36 Heritage East Flybridge | 14 |
| 36 Heritage East Engine Room | 15 |
| 36 Heritage East Electrical System | 16 |
| 36 Heritage East Dinghy | 16 |
| 36 Heritage East Safety Equipment | 17 |
| 36 Heritage East Other Features/Equipment | 17 |
| 36 Heritage East Exclusions | 17 |
| DISCLAIMER | 18 |

| | |
|--------------------------|-----------|
| Исключения | 18 |
| Отказ от ответственности | 18 |
| ФОТОГРАФИИ | 19 |
| 001b | 19 |
| 001a | 19 |
| 002 | 19 |
| 003 | 19 |
| 005 | 20 |
| 004 | 20 |
| 006 | 20 |
| 007a | 20 |
| 008 | 20 |
| 010 | 20 |
| 012 | 21 |
| 011 | 21 |
| 013 | 21 |
| 014 | 21 |
| 015 | 22 |
| 016 | 22 |
| 018 | 22 |
| 017 | 22 |
| 019 | 23 |
| 020 | 23 |
| 021 | 23 |
| 022 | 23 |
| 023 | 23 |
| 024 | 23 |
| 025 | 24 |
| 026 | 24 |

| | |
|------|----|
| 027 | 24 |
| 028 | 24 |
| 029 | 24 |
| 030 | 24 |
| 031 | 25 |
| 032 | 25 |
| 033 | 25 |
| 034 | 25 |
| 035 | 25 |
| 036 | 25 |
| 037a | 26 |
| 037b | 26 |
| 038 | 26 |
| 039 | 26 |
| 040 | 26 |
| 041 | 26 |
| 042 | 27 |
| 043 | 27 |
| 044 | 27 |
| 045 | 27 |
| 047 | 27 |
| 046 | 27 |
| 049 | 28 |
| 048 | 28 |
| 050 | 28 |
| 051 | 28 |
| 053 | 29 |
| 052 | 29 |
| 054 | 29 |

| | |
|-----|----|
| 055 | 29 |
| 056 | 29 |
| 057 | 29 |
| 058 | 30 |
| 059 | 30 |
| 060 | 30 |
| 061 | 30 |
| 062 | 30 |
| 063 | 30 |
| 064 | 31 |
| 065 | 31 |
| 066 | 31 |
| 067 | 31 |
| 069 | 32 |
| 068 | 32 |
| 070 | 32 |
| 071 | 32 |
| 072 | 32 |
| 073 | 32 |
| 074 | 33 |
| 075 | 33 |
| 077 | 33 |
| 076 | 33 |
| 078 | 34 |
| 079 | 34 |
| 080 | 34 |
| 081 | 34 |
| 083 | 35 |
| 082 | 35 |

| | |
|-----|----|
| 085 | 35 |
| 084 | 35 |
| 086 | 36 |
| 087 | 36 |
| 088 | 36 |
| 089 | 36 |
| 090 | 37 |
| 091 | 37 |
| 092 | 37 |
| 093 | 37 |
| 094 | 38 |
| 095 | 38 |
| 096 | 38 |
| 097 | 38 |
| 098 | 38 |
| 099 | 38 |
| 100 | 39 |
| 101 | 39 |
| 102 | 39 |
| 103 | 39 |
| 104 | 39 |
| 105 | 39 |
| 107 | 40 |
| 108 | 40 |
| 109 | 40 |
| 110 | 40 |
| 111 | 40 |
| 123 | 40 |
| 124 | 41 |

| | |
|-----------------------|-----------|
| 125 | 41 |
| 126 | 41 |
| 127 | 41 |
| 128 | 41 |
| 129 | 41 |
| 131 | 42 |
| 130 | 42 |
| 132 | 42 |
| КОНТАКТЫ | 43 |
| Контактная информация | 43 |
| Телефоны | 43 |
| Время работы | 43 |
| Адрес | 43 |

ХАРАКТЕРИСТИКИ

Обзор

Lady Bug VII is a well equipped, popular Heritage East 36 in truly pristine condition. She has a stable ride with hard chines, and her prop is protected by a full-length keel. She's a perfect live aboard, long range cruiser and "Loop" Candidate. With the arch down, her bridge clearance can get as low as 13' 6". She has the classic two stateroom layout with centerline queen walk around aft bed, plus an offset double in the forward cabin (not a split V). The aft cabin head has a separate shower compartment with curtain, and the forward head has a hand held shower. Both have freshwater flush heads.

The salon has the lower helm with complete set of electronics, a moveable weighted dining/coffee/cocktail table for flexible configuration, breakfast bar, and the galley just a couple of steps down has loads of storage, dual voltage refrigerator, stove/oven and microwave.

Up and aft from salon via stairway is the fully enclosed "Sundeck" with wet bar and refrigerator, and mosquito screens and closeable doors. 4 easy steps gets one up to the flybridge and a short ladder leads down to swim platform. Side decks with safety rail give easy access to bow.

Основная информация

Тип судна: Trawler Yacht

Модельный год: 2005

Год постройки: 2005

Страна: United States

Размеры

Длина общая: 36' 0" (10.97m)

Ширина: 12' 7" (3.84m)

Мин. осадка: 3' 8" (1.12m)

Скорость, вместимость и масса

Вместимость воды: 180 Gallons

Вместимость сточного бака: 60 Gallons

Объем топливного бака: 420 Gallons

Размещение

Всего кают: 2

Корпус и палуба

Материал корпуса: Fiberglass

Информация о двигателе

Двигатели: 1

Производитель: Cummings

Модель: 6BT5.9M

Тип двигателя: Inboard

Тип топлива: Diesel

ПОДРОБНОЕ ОПИСАНИЕ

MAIN DESCRIPTION

Lady Bug VII is a well equipped, popular Heritage East 36 in truly pristine condition. She has a stable ride with hard chines, and her prop is protected by a full-length keel. She's a perfect live aboard, long range cruiser and "Loop" Candidate. With the arch down, her bridge clearance can get as low as 13' 6". She has the classic two stateroom layout with centerline queen walk around aft bed, plus an offset double in the forward cabin (not a split V). The aft cabin head has a separate shower compartment with curtain, and the forward head has a hand held shower. Both have freshwater flush heads.

The salon has the lower helm with complete set of electronics, a moveable weighted dining/coffee/cocktail table for flexible configuration, breakfast bar, and the galley just a couple of steps down has loads of storage, dual voltage refrigerator, stove/oven and microwave.

Up and aft from salon via stairway is the fully enclosed "Sundeck" with wet bar and refrigerator, and mosquito screens and closeable doors. 4 easy steps gets one up to the flybridge and a short ladder leads down to swim platform. Side decks with safety rail give easy access to bow.

36 Heritage East Main Salon

Breakfast bar w/10" extension

Vizio 40" LED flat screen TV with adjustable mount

DVD player

Cell phone amplifier & antenna

Intellian i2 SAT TV with DISH receiver

Port & Starboard storage lockers

Fixed L-shaped settee with moveable weighted teak leaf dining table and foot stool

Moveable helm seat (or small doggie step to exit doorway)

Custom wood blinds

36 Heritage East Lower Helm Station

Raymarine 9" GPS chartplotter installed 2020

Side Power bow thruster control; STERN THRUSTER 2020

Raymarine ST60- depth sounder

Standard Horizon Matrix VHF G2200 w/AIS display (2021)

All VHF cabling & antenna 2021

Hynautic hydraulic wheel steering

Morse engine controls

Windshield wipers on 3 windows

Cummins instrument panel w/VDO gauges

Weems & Plath clock, barometer & temp/humidity displays

Compass

36 Heritage East Galley

Vitrifigo dual voltage (12V or 120) 8.2 cu. ft. refrigerator/freezer

Seaward Princess (3) burner propane stove & oven

Kenmore microwave oven

Trident gas control solenoid

Storage lockers

Pantry storage

Dual stainless steel deep sinks with cutting board inserts and Scandvik faucet

Laminate counter tops

36 Heritage East Master Stateroom

Center Island Queen Berth, upgraded mattress with bamboo spring system

Dual night stands

Two hanging lockers, 8 large drawers, 12 cabinets

Night lighting system under bed w/controls on each side

Custom drapes

Full length mirrors

Drawer storage

Stainless steel opening ports

Transom opening hatch

En suite head w/stall shower

36 Heritage East Master Head

Par Jabsco FW flush electric head

Sink w/vanity

Stall shower w/shower sump

Stainless steel opening port

36 Heritage East Forward Stateroom

Off-set double berth

Hanging locker

Love seat

Overhead opening hatch

Stainless Steel opening ports

Drawer & under berth storage

Access to anchor chain locker

36 Heritage East Forward Head

Jabsco fresh water flush electric head

Sink w/vanity

Hand-held shower w/shower sump

Stainless steel opening port

36 Heritage East Foredeck

Rocna 73 with 230 ft of chain new, 2018

Fortress FX37 secondary anchor with 25' chain & 75' of 3/4" nylon rode

Lewmar dual capstan electric windlass w/ helm and foredeck controls

Stainless Steel Sampson Post

Dual port and starboard fender caddies

Sunbrella windshield cover (2021)

Fiberglass swim platform w/swim telescoping ladder

Transom mounted shower

Fiberglass bow pulpit w/dual anchor rollers

Salt water wash down forward

Full length stainless steel hand rails

Port & starboard boarding gates

Fenders

Dock lines

36 Heritage East Aft Deck

Aft deck hard top w/sliding hatch

Wet bar w/sink & storage locker

Dockside fresh water inlet (reducer) with filter

Aft deck U-Line combo freezer/icemaker (new 2021)

Force 10 Barbeque grill

Ladder access to swim platform

Fiberglass weather panels

Stainless steel hand rails

Aft deck total enclosure w/U-Zips, mosquito screens, and roll up wing doors (new 2019/2020)

Sundeck chairs and table

36 Heritage East Flybridge

Bimini top w/full enclosure (U-zips/screened) New in 2018/2019

Raymarine 12" Plotter/ GPS/Radar display installed 2020

Raymarine closed dome 2kw radar (1/8 - 48 mile range)

Raymarine ST-60 depth display

Raymarine S2 Smart Pilot w/ST-6001 controller

Kenwood AM/FM/CD remote control w/speakers (2019)

Standard Horizon RAM mike VHF w/AIS display (2021)

Stern LED flood light

Todd helm seat

Morse engine controls

Hynautic hydraulic wheel steering

Hinged fiberglass radar arch

Ritchie Power Damp compass

Dual cushioned bench seats with storage and additional portable lounge seats

Full helm canvas weather cover (2021)

Cummins instrument panel w/VDO gauges

Side Power bow AND STERN thruster control

Windlass controls

36 Heritage East Engine Room

Single x 220hp Diesel IB; Hrs: 2279 Cummins 6BT5.9M

Kohler 8 KW generator model ZF 63A w/Yanmar engine

2 Cruise Air (16k BTU) Marine air conditioners w/digital controls

Katadyn PS-80E-2 Water Maker (decommissioned and conveyed as-is)

Seaward 11 gallon electric hot water heater with main engine heat exchanger option

Oil change manifold system (Gen-set, main engine and transmission)

Fuel transfer pump with additional in-line Racor 900 filter

Centrifuge magnetic fuel polisher

12v water pressure system w/dual filters

Main engine block heating system (120 V) for cold weather

Side Power SP55S bow thruster w/dual station controls

Side Power SE80 stern thruster installed 2018

Main engine & generator fresh water cooling systems

Raw water sea strainers (Gen-set, main engine and Air-conditioning)

PSS dripless shaft seal

60 gallon holding tank w/deck or macerator discharge

Main Engine temperature alarm

Main Engine oil pressure alarm

Engine room sound insulation

Dual primary ME Racor 900 fuel filters w/vacuum gauge

Gen-set Racor fuel filter

Fiberglass mufflers

Dual electric/automatic bilge pumps

Port and starboard fuel tanks, total capacity 420 gallons

Wema water tank level gauge

Wema waste tank level gauge

12 volt lighting

36 Heritage East Electrical System

12 volt LED lighting throughout

110 volt AC electrical system

12 volt DC electrical system

2- KYOCERA 145 watt solar panels 2 remote solar controller panel at lower helm

Xantex 3012 Freedom Charger w/control panel for house battery bank

Kohler 8kw generator w/sound shield with remote start/stop approx (842 hours)

Digital volt meters

(4) Full River DC215-12 860 AH ship's service batteries

(1) main engine start battery

Dual 30 amp dockside electrical cable

Newmar breakered electrical panel

Electrical bonding throughout

36 Heritage East Dinghy

2005 9'6" Avon

St. Croix SS davits (removable)

(no motor)

36 Heritage East Safety Equipment

Dual trumpet electric horn

Emergency engine stop

Coast Guard Safety Package

Fire extinguishers

Manual emergency bilge pump

2 electric bilge pumps w/automatic float switches

Stern LED flood light for backing

36 Heritage East Other Features/Equipment

New ablative bottom paint - January 2021

Hull waxed and detailed - January 2021

Teak & Holly cabin sole throughout

Varnished exterior sundeck teak doors and cabinets

Shakespeare TV antenna

Intellian i2 Sat TV with dish receiver

Plumbed for washer/dryer

36 Heritage East Exclusions

Owner's personal clothing and belongings, small kitchen equipment, decorative items, and tools not proprietary to vessel

Water maker has been decommissioned and is conveyed as is

DISCLAIMER

The Company offers the details of this vessel in good faith but cannot guarantee or warrant the accuracy of this information nor warrant the condition of the vessel. A buyer should instruct his agents, or his surveyors, to investigate such details as the buyer desires validated. This vessel is offered subject to prior sale, price change, or withdrawal without notice.

Исключения

При продаже яхты исключаются личные вещи владельца.

Отказ от ответственности

Компания предоставляет описание судна или яхты добросовестно, но не может гарантировать точность этой информации, а также не ручается за техническое состояние. Покупатель должен проинструктировать своих агентов или оценщиков исследовать представленную информацию более подробно, по собственному желанию. Продажа судна или яхты, изменение цены или снятие с продажи будет происходить без предварительного уведомления.

ФОТОГРАФИИ

001a



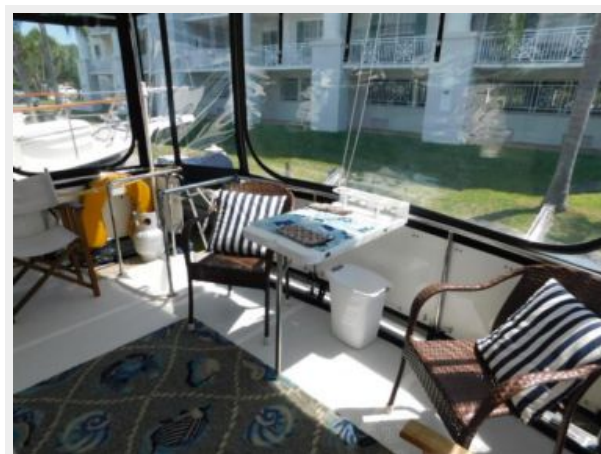
001b



002



003



004



005



006



007a



008



010



011



012



013



014



015



016



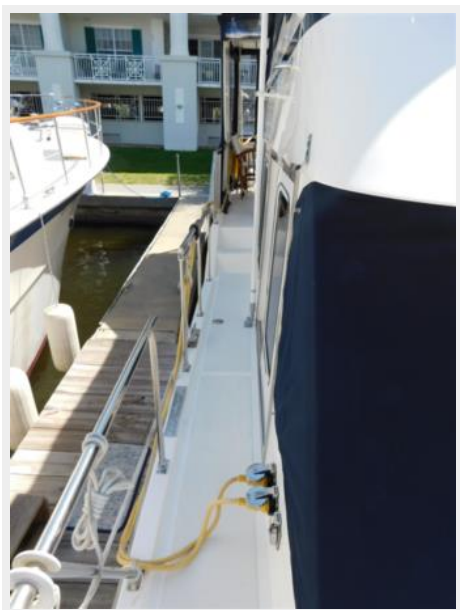
017



018



019



020



021



022



023



024



025



026



027



028



029



030



031



032



033



034



035



036



037a



037b



038



039



040



041



042



043



044



045



047



046



048



049



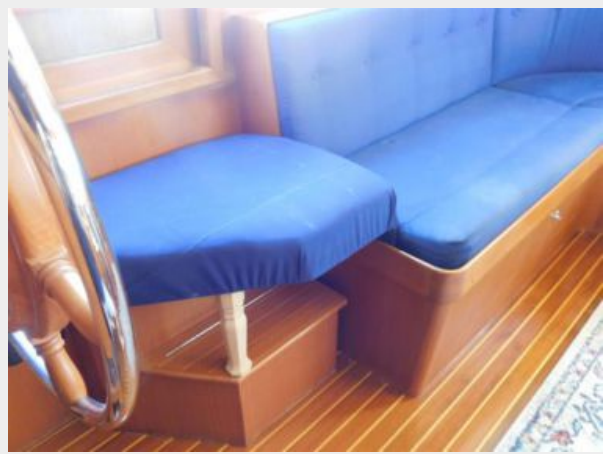
050



051



052



053



054



055



056



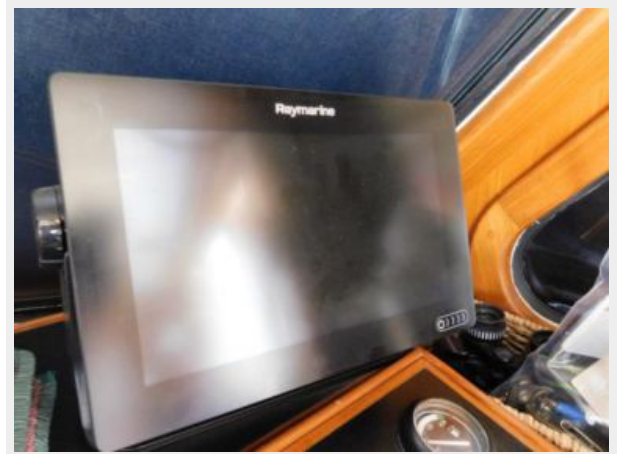
057



058



059



060



061



062



063



064



065



066



067



068



069



070



071



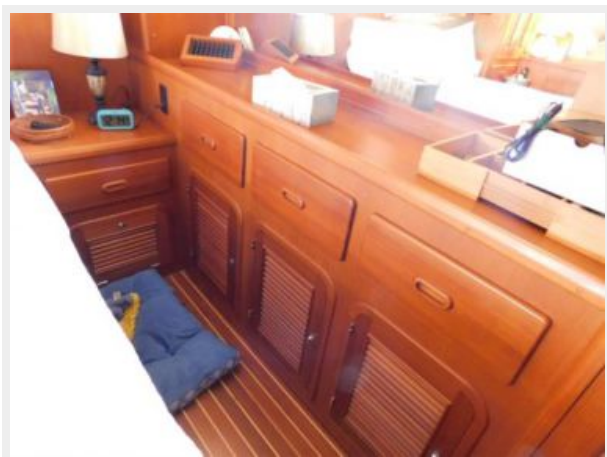
072



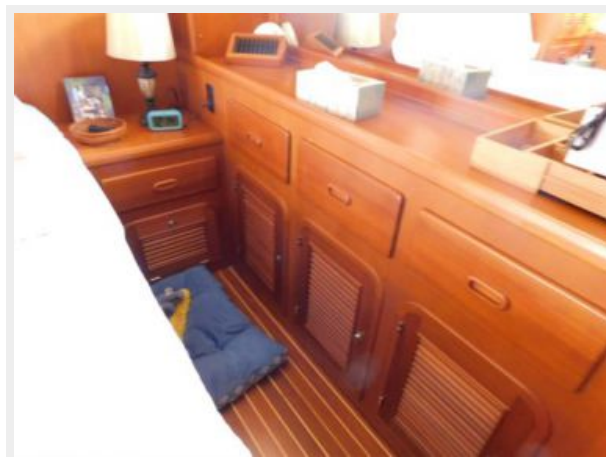
073



074



075



077



076



078



079



080



081



082



083



084



085



086



087



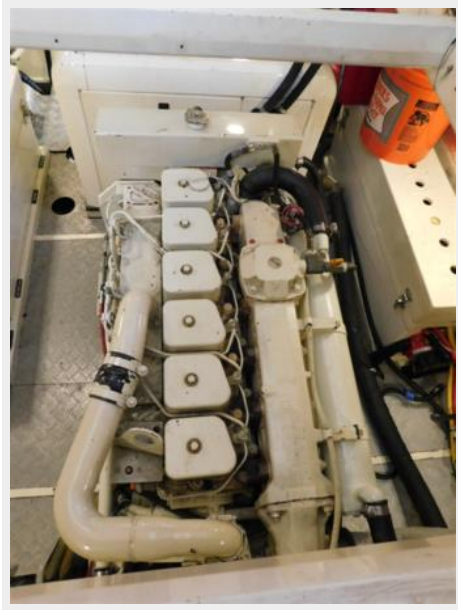
088



089



090



091



092



093



094



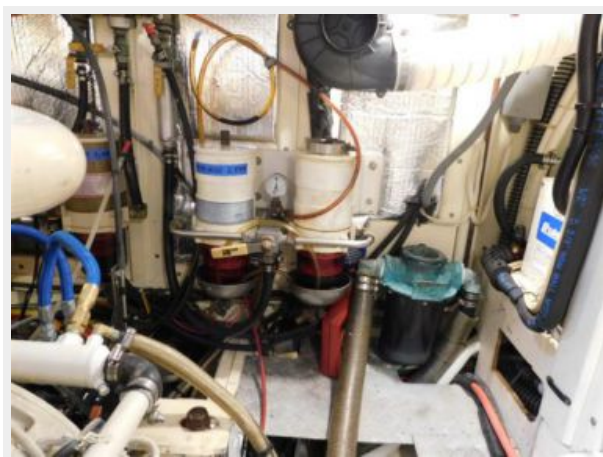
095



096



097



098



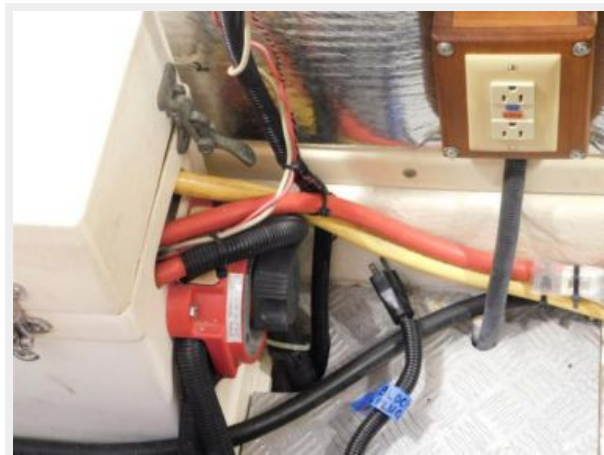
099



100



101



102



103



104



105



107



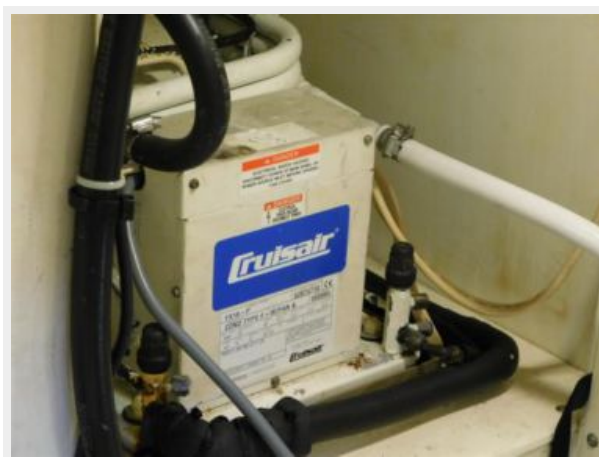
108



109



110



111



123



124



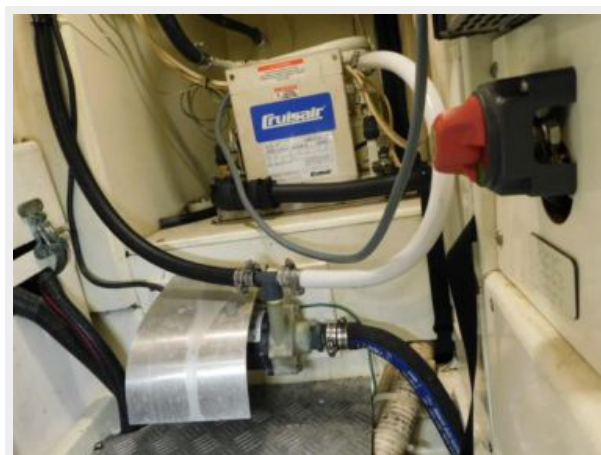
125



126



127



128



129



130



131



132



КОНТАКТЫ

Андрей Шестаков (Andrey Shestakov) – ведущий яхтенный брокер отдела продаж яхт и судов компании Shestakov Yacht Sales Inc. Официальный представитель Shestakov Yacht Sales Inc. для русскоговорящих клиентов в центральном офисе компании в Майами/Форт Лодердейл/Флорида/США.

Контактная информация

Email: andrey@shestakovyachtsales.com

Web: shestakovyachtsales.com

Телефоны

Краснодарский край: **+7(918)465-66-44**

США, Майами, Флорида: **+1(954)274-4435**

Время работы

Понедельник – Суббота: **9:00 - 21:00**
EDT

Воскресенье: **Закрето**

Адрес



Harbour Towne Marina, 850 NE 3rd St,
STE 213, Dania, FL 33004