

SWEET LIFE — GRAND BANKS



Builder: GRAND BANKS

Year Built: 1985

Model: Motor Yacht

Price: PRICE ON APPLICATION

Location: United States

LOA: 36' 0" (10.97m)

Beam: 12' 2" (3.71m)

Max Draft: 3' 11" (1.19m)

Our experienced yacht broker, Andrey Shestakov, will help you choose and buy a yacht that best suits your needs **Sweet Life — GRAND BANKS** from our catalogue. Presently, at Shestakov Yacht Sales Inc., we have a wide variety of yachts available on our sale's list. We also work in close contact with all the big yacht manufacturers from all over the world.

If you would like to buy a yacht **Sweet Life — GRAND BANKS** or would like help answering any questions concerning purchasing, selling or chartering a yacht, please call **+1(954)274-4435**

TABLE OF CONTENTS

TABLE OF CONTENTS	2
SPECIFICATIONS	5
Overview	5
Basic Information	5
Dimensions	5
Speed, Capacities and Weight	5
Accommodations	5
Hull and Deck Information	6
Engine Information	6
DETAILED INFORMATION	7
UPDATES AND UPGRADES SINCE 2015	7
Salon & Galley	7
Forward Stateroom	8
Aft Stateroom	8
Aft Deck	9
Flybridge/Upper Helm Station	9
Lower Helm Station	9
Extras	9
Mechanical/Electrical	10
Exclusions	10
Disclaimer	10
Exclusions	10
Disclaimer	10
PHOTOS	11
Transom looking Starboard	11
Upper Helm Station	11
Bow looking Forward	11
Bow	11

Transom looking Forward	11
Transom	11
Starboard Walkaround to Bow	12
Transom	12
Transom Storage	12
Flybridge Looking Aft	12
Salon	12
Salon Galley Storage	12
Salon Looking Starboard	13
Lower Helm Wheel	13
Lower Helm Station	13
Lower Helm Display	13
Garmin Navigation and Auto Pilot	13
Galley looking Port	13
Access to Aft Stateroom	14
Aft Stateroom Looking Port	14
Aft Stateroom Head	14
Forward Stateroom	14
Forward Stateroom Head	14
AC Generator Controls	14
Breaker Panel	15
Engine	15
Generator	15
Refrigerator w/ Ice Maker	15
Stern	15
CONTACTS	16
Contact details	16
Telephones	16
Office hours	16

Address

16

SPECIFICATIONS

Overview

If you are like the thousands of Grand Banks admirers and followers, now is your chance to own this beautiful and updated 36 Grand Banks Classic. Whether you want to cruise the islands, or are looking for the perfect live-aboard, this is the boat for you. The current owner has spent the past 5 years preparing her to cruise the Caribbean but is unable to fulfill that dream. With her updates and upgrades, she is ready for her next owner to fulfill their dream.

Basic Information

Category: Motor Yacht

Model Year: 1985

Year Built: 1985

Country: United States

Dimensions

LOA: 36' 0" (10.97m)

Beam: 12' 2" (3.71m)

Max Draft: 3' 11" (1.19m)

Speed, Capacities and Weight

Displacement: 23300 Pounds

Water Capacity: 170 Gallons

Fuel Capacity: 400 Gallons

Accommodations

Total Cabins: 2

Total Heads: 2

Hull and Deck Information

Hull Material: Composite

Engine Information

Engines: 2

Manufacturer: Ford Lehman

Engine Type: Inboard

Fuel Type: Diesel

DETAILED INFORMATION

UPDATES AND UPGRADES SINCE 2015

- **Overhauled engines and transmissions**
- **Replaced fuel tanks, installed plastic tanks**
- **Replaced fuel filter system**
- **Replaced fresh water tank**
- **Replaced fresh water pump, accumulation tank, and strainer**
- **Replaced refrigerator with ice-maker**
- **Replaced Batteries**
- **Replaced wood decking with non-skid**
- **Replaced swim platform**
- **Replaced drive shafts**
- **Replaced propellers**
- **Replaced cutlass bearings**
- **Replaced toilets**
- **Boom painted with Awlgrip**
- **Removed mast lights and replaced with LED fixtures.**

Salon & Galley

Entry to the salon and galley can be from either the port or starboard side doors. The rich wood gives this vessel the classic Grand Banks look. The starboard L-Shaped settee with expanding coffee table, and port-side built in settee, provides ample seating for entertaining, working, or enjoying meals with family and friends. Forward and to port is the well-equipped galley with NEW refrigerator and ice-maker, 3-burner stove with oven, stainless steel sink, and cabinet storage.

- **Refrigerator with Dometic ice-maker.**
- **Princess 3-burner stove top with oven.**

- **Stainless steel sink.**
- **Settee sitting for up to 6.**
- **Folding coffee/dining table.**
- **Storage.**

Forward Stateroom

The forward stateroom located in the bow and down three steps from the galley, features a large V-berth. The wood planked walls continue the classic elegance of this vessel and the large port and starboard opening windows, as well as the opening skylight, allows for an abundance of natural light and fresh air. Drawer storage below the berth on port and starboard, and a port side hanging closet provide ample storage. The en-suite head has a shower, Jabsco toilet, sink, and additional storage.

- **Large V-berth.**
- **Drawer storage.**
- **Hanging Closet.**
- **En-suite head.**

Aft Stateroom

The aft stateroom is down three steps from the salon and contains a port side single berth, and a double berth to starboard. A 6-drawer built in dresser splits the berths and is located under the double doors providing access to the cockpit and transom. Additional storage drawers under both berths, combined with a hanging closet, gives excess storage for you or your guests. The en-suite head has a shower head, Jabsco toilet, sink, and additional storage.

- **Single berth.**
- **Full berth.**
- **6 drawer storage.**
- **Under berth storage**
- **Hanging Closet.**
- **En-suite head.**

- **Access to aft cockpit and transom.**

Aft Deck

The deck has a beautiful teak swim platform perfect for cooling off when at anchor or fishing. The remaining decks have had the teak removed and non-skid added for easier maintenance. The aft deck has two opening hatches for storage of lines, fenders, and equipment. Forward of those hatches is an entry to the aft stateroom through two half doors. There is a nice walk-around to both starboard and port for access to the bow.

Flybridge/Upper Helm Station

The upper helm station is located forward on the open flybridge. The perfect place to cruise from on beautiful days while spending time with friends and family on the spacious bridge with built-in seating. The upper helm station is equipped with VHF, Garmin GPS, Chartplotter, Auto Pilot, and a Danforth compass.

- **Garmin AutoPilot**
- **Garmin GPS and Chartplotter.**
- **iCom VHF Radio.**

Lower Helm Station

The lower helm station is located forward of the salon to the starboard side and is equipped with VHF, Garmin GPS, Chartplotter, and Auto Pilot. There is easy access and visibility to alarm panels, breaker panels, and Inverter display.

- **Garmin AutoPilot.**
- **Garmin GPS and Chartplotter.**
- **iCome VHF Radio.**
- **Jensen stereo.**

Extras

- **Complete set rail covers**
- **Extra anchor an anchor line**
- **Inflatable dinghy**

- **New in box Honda fourstroke 2 HP outboard motor**
- **New induction hot plate**
- **New in box BBQ grill**
- **Canvas covering for upper helm station, railings, and bimini top**

Mechanical/Electrical

- **Northern Lights Generator 890 Hrs.**
- **Reverse Cycle air/heat with digital controls.**
- **50 amp automatic charger.**
- **Holding tank with macerator.**
- **Batteries.**
- **Hot water heater.**

Exclusions

Owner's personal items.

Disclaimer

The company offers the details of this vessel in good faith but cannot guarantee or warrant the accuracy of this information nor warrant the conditions of the vessel. A buyer should instruct his agents, or his surveyors, to investigate such details as the buyer desires validated. This vessel is offered subject to prior sale, price change, or withdrawal without notice.

Exclusions

Owner's personal belongings.

Disclaimer

The Company offers the details of this vessel or yacht in good faith but cannot guarantee or warrant the accuracy of this information nor warrant the condition of the vessel. A buyer should instruct his representatives, agents, or his surveyors, to investigate such details as the buyer desires validated. This vessel or yacht is offered subject to prior sale, price change, or withdrawal without notice.

PHOTOS

Transom looking Starboard



Upper Helm Station



Bow looking Forward



Bow



Transom looking Forward



Transom



Starboard Walkaround to Bow



Transom



Transom Storage



Flybridge Looking Aft



Salon



Salon Galley Storage



Salon Looking Starboard



Lower Helm Wheel



Lower Helm Station



Lower Helm Display



Garmin Navigation and Auto Pilot



Galley looking Port



Access to Aft Stateroom



Aft Stateroom Looking Port



Aft Stateroom Head



Forward Stateroom



Forward Stateroom Head



AC Generator Controls



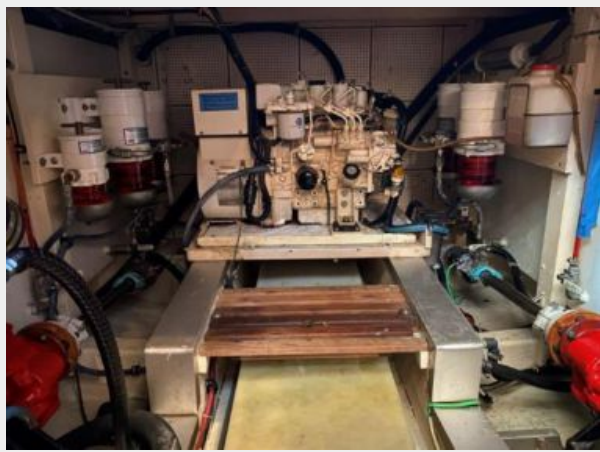
Breaker Panel



Engine



Generator



Refrigerator w/ Ice Maker



Stern



CONTACTS

Andrey Shestakov, leading yacht broker of the sales department of Shestakov Yacht Sales Inc. Shestakov Yacht Sales Inc., the official representative of the Miami/Fort Lauderdale FL headquarters.

Contact details

Email: andrey@shestakovyachtsales.com

Web: shestakovyachtsales.com/en/

Telephones

USA: +1(954)274-4435

Office hours

Monday – Saturday: **9:00 - 21:00** EDT

Sunday: **closed**

Address



Harbour Towne Marina, 850 NE 3rd St,
STE 213, Dania, FL 33004