

SWEET LIFE — GRAND BANKS



Судостроитель: GRAND BANKS

Год постройки: 1985

Модель: Моторная яхта

Цена: **ЦЕНА ЯХТЫ ПО ЗАПРОСУ**

Местонахождение: United States

Длина общая: 36' 0" (10.97m)

Ширина: 12' 2" (3.71m)

Макс. осадка: 3' 11" (1.19m)

Купить **Sweet Life — GRAND BANKS** а также выбрать подходящую вам яхту из нашего каталога яхт вам поможет опытный яхтенный брокер Андрей Шестаков. На сегодняшний день компания **Shestakov Yacht Sales Inc.** имеет большое количество яхт в собственном списке продаж, а также тесно сотрудничает со всеми крупными яхтенными производителями по всему миру.

Для того чтобы купить яхту **Sweet Life — GRAND BANKS** а также проконсультироваться по любому вопросу связанному с покупкой, продажей, чартером яхт позвоните по телефону **+7(918)465-66-44**.

ОГЛАВЛЕНИЕ

ОГЛАВЛЕНИЕ	2
ХАРАКТЕРИСТИКИ	5
Обзор	5
Основная информация	5
Размеры	5
Скорость, вместимость и масса	5
Размещение	5
Корпус и палуба	6
Информация о двигателе	6
ПОДРОБНОЕ ОПИСАНИЕ	7
UPDATES AND UPGRADES SINCE 2015	7
Salon & Galley	7
Forward Stateroom	8
Aft Stateroom	8
Aft Deck	9
Flybridge/Upper Helm Station	9
Lower Helm Station	9
Extras	9
Mechanical/Electrical	10
Exclusions	10
Disclaimer	10
Исключения	10
Отказ от ответственности	10
ФОТОГРАФИИ	12
Transom looking Starboard	12
Upper Helm Station	12
Bow looking Forward	12
Bow	12

Transom looking Forward	12
Transom	12
Starboard Walkaround to Bow	13
Transom	13
Transom Storage	13
Flybridge Looking Aft	13
Salon	13
Salon Galley Storage	13
Salon Looking Starboard	14
Lower Helm Wheel	14
Lower Helm Station	14
Lower Helm Display	14
Garmin Navigation and Auto Pilot	14
Galley looking Port	14
Access to Aft Stateroom	15
Aft Stateroom Looking Port	15
Aft Stateroom Head	15
Forward Stateroom	15
Forward Stateroom Head	15
AC Generator Controls	15
Breaker Panel	16
Engine	16
Generator	16
Refrigerator w/ Ice Maker	16
Stern	16
КОНТАКТЫ	17
Контактная информация	17
Телефоны	17
Время работы	17

Адрес

17

ХАРАКТЕРИСТИКИ

Обзор

If you are like the thousands of Grand Banks admirers and followers, now is your chance to own this beautiful and updated 36 Grand Banks Classic. Whether you want to cruise the islands, or are looking for the perfect live-aboard, this is the boat for you. The current owner has spent the past 5 years preparing her to cruise the Caribbean but is unable to fulfill that dream. With her updates and upgrades, she is ready for her next owner to fulfill their dream.

Основная информация

Тип судна: Моторная яхта

Модельный год: 1985

Год постройки: 1985

Страна: United States

Размеры

Длина общая: 36' 0" (10.97m)

Ширина: 12' 2" (3.71m)

Макс. осадка: 3' 11" (1.19m)

Скорость, вместимость и масса

Водоизмещение: 23300 Pounds

Вместимость воды: 170 Gallons

Объем топливного бака: 400 Gallons

Размещение

Всего кают: 2

Всего ком. состава: 2

Корпус и палуба

Материал корпуса: Composite

Информация о двигателе

Двигатели: 2

Производитель: Ford Lehman

Тип двигателя: Inboard

Тип топлива: Diesel

ПОДРОБНОЕ ОПИСАНИЕ

UPDATES AND UPGRADES SINCE 2015

- **Overhauled engines and transmissions**
- **Replaced fuel tanks, installed plastic tanks**
- **Replaced fuel filter system**
- **Replaced fresh water tank**
- **Replaced fresh water pump, accumulation tank, and strainer**
- **Replaced refrigerator with ice-maker**
- **Replaced Batteries**
- **Replaced wood decking with non-skid**
- **Replaced swim platform**
- **Replaced drive shafts**
- **Replaced propellers**
- **Replaced cutlass bearings**
- **Replaced toilets**
- **Boom painted with Awlgrip**
- **Removed mast lights and replaced with LED fixtures.**

Salon & Galley

Entry to the salon and galley can be from either the port or starboard side doors. The rich wood gives this vessel the classic Grand Banks look. The starboard L-Shaped settee with expanding coffee table, and port-side built in settee, provides ample seating for entertaining, working, or enjoying meals with family and friends. Forward and to port is the well-equipped galley with NEW refrigerator and ice-maker, 3-burner stove with oven, stainless steel sink, and cabinet storage.

- **Refrigerator with Dometic ice-maker.**
- **Princess 3-burner stove top with oven.**

- **Stainless steel sink.**
- **Settee sitting for up to 6.**
- **Folding coffee/dining table.**
- **Storage.**

Forward Stateroom

The forward stateroom located in the bow and down three steps from the galley, features a large V-berth. The wood planked walls continue the classic elegance of this vessel and the large port and starboard opening windows, as well as the opening skylight, allows for an abundance of natural light and fresh air. Drawer storage below the berth on port and starboard, and a port side hanging closet provide ample storage. The en-suite head has a shower, Jabsco toilet, sink, and additional storage.

- **Large V-berth.**
- **Drawer storage.**
- **Hanging Closet.**
- **En-suite head.**

Aft Stateroom

The aft stateroom is down three steps from the salon and contains a port side single berth, and a double berth to starboard. A 6-drawer built in dresser splits the berths and is located under the double doors providing access to the cockpit and transom. Additional storage drawers under both berths, combined with a hanging closet, gives excess storage for you or your guests. The en-suite head has a shower head, Jabsco toilet, sink, and additional storage.

- **Single berth.**
- **Full berth.**
- **6 drawer storage.**
- **Under berth storage**
- **Hanging Closet.**
- **En-suite head.**

- **Access to aft cockpit and transom.**

Aft Deck

The deck has a beautiful teak swim platform perfect for cooling off when at anchor or fishing. The remaining decks have had the teak removed and non-skid added for easier maintenance. The aft deck has two opening hatches for storage of lines, fenders, and equipment. Forward of those hatches is an entry to the aft stateroom through two half doors. There is a nice walk-around to both starboard and port for access to the bow.

Flybridge/Upper Helm Station

The upper helm station is located forward on the open flybridge. The perfect place to cruise from on beautiful days while spending time with friends and family on the spacious bridge with built-in seating. The upper helm station is equipped with VHF, Garmin GPS, Chartplotter, Auto Pilot, and a Danforth compass.

- **Garmin AutoPilot**
- **Garmin GPS and Chartplotter.**
- **iCom VHF Radio.**

Lower Helm Station

The lower helm station is located forward of the salon to the starboard side and is equipped with VHF, Garmin GPS, Chartplotter, and Auto Pilot. There is easy access and visibility to alarm panels, breaker panels, and Inverter display.

- **Garmin AutoPilot.**
- **Garmin GPS and Chartplotter.**
- **iCome VHF Radio.**
- **Jensen stereo.**

Extras

- **Complete set rail covers**
- **Extra anchor and anchor line**
- **Inflatable dinghy**

- **New in box Honda fourstroke 2 HP outboard motor**
- **New induction hot plate**
- **New in box BBQ grill**
- **Canvas covering for upper helm station, railings, and bimini top**

Mechanical/Electrical

- **Northern Lights Generator 890 Hrs.**
- **Reverse Cycle air/heat with digital controls.**
- **50 amp automatic charger.**
- **Holding tank with macerator.**
- **Batteries.**
- **Hot water heater.**

Exclusions

Owner's personal items.

Disclaimer

The company offers the details of this vessel in good faith but cannot guarantee or warrant the accuracy of this information nor warrant the conditions of the vessel. A buyer should instruct his agents, or his surveyors, to investigate such details as the buyer desires validated. This vessel is offered subject to prior sale, price change, or withdrawal without notice.

Исключения

При продаже яхты исключаются личные вещи владельца.

Отказ от ответственности

Компания предоставляет описание судна или яхты добросовестно, но не может гарантировать точность этой информации, а также не ручается за техническое состояние. Покупатель должен проинструктировать своих агентов или оценщиков исследовать представленную информацию более подробно, по собственному желанию. Продажа судна или яхты, изменение цены или снятие с продажи будет происходить без

предварительного уведомления.

ФОТОГРАФИИ

Transom looking Starboard



Upper Helm Station



Bow looking Forward



Bow



Transom looking Forward



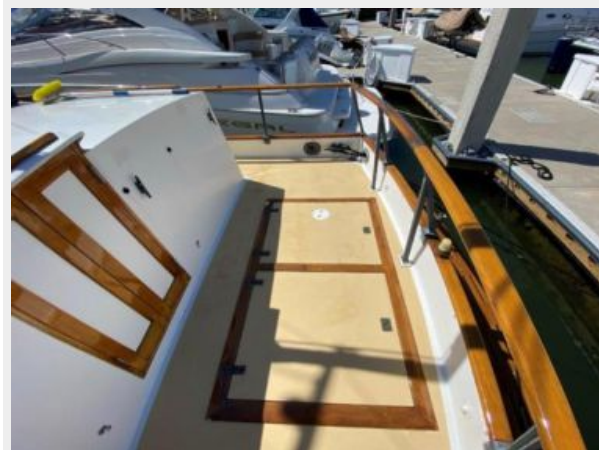
Transom



Starboard Walkaround to Bow



Transom



Transom Storage



Flybridge Looking Aft



Salon



Salon Galley Storage



Salon Looking Starboard



Lower Helm Wheel



Lower Helm Station



Lower Helm Display



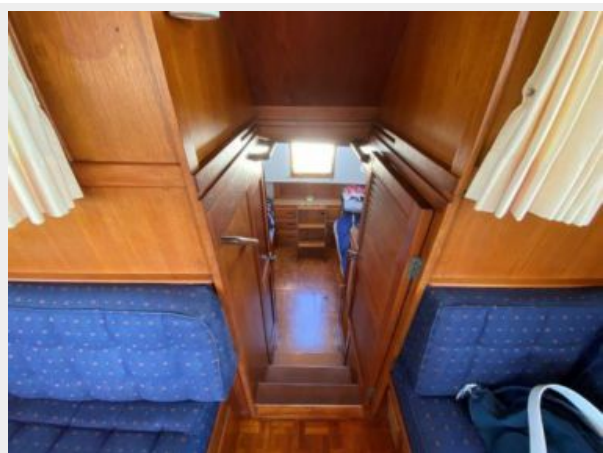
Garmin Navigation and Auto Pilot



Galley looking Port



Access to Aft Stateroom



Aft Stateroom Looking Port



Aft Stateroom Head



Forward Stateroom



Forward Stateroom Head



AC Generator Controls



Breaker Panel



Engine



Generator



Refrigerator w/ Ice Maker



Stern



КОНТАКТЫ

Андрей Шестаков (Andrey Shestakov) – ведущий яхтенный брокер отдела продаж яхт и судов компании Shestakov Yacht Sales Inc. Официальный представитель Shestakov Yacht Sales Inc. для русскоговорящих клиентов в центральном офисе компании в Майами/Форт Лодердейл/Флорида/США.

Контактная информация

Email: andrey@shestakovyachtsales.com

Web: shestakovyachtsales.com

Телефоны

Краснодарский край: **+7(918)465-66-44**

США, Майами, Флорида: **+1(954)274-4435**

Время работы

Понедельник – Суббота: **9:00 - 21:00**
EDT

Воскресенье: **Закрето**

Адрес



Harbour Towne Marina, 850 NE 3rd St,
STE 213, Dania, FL 33004