

NO NAME — CHAPARRAL



Builder: CHAPARRAL

Year Built: 2004

Model: Cruising Yacht

Price: PRICE ON APPLICATION

Location: United States

LOA: 31' 0" (9.45m)

Beam: 10' 7" (3.23m)

Min Draft: 2' 9" (0.84m)

Max Draft: 2' 9" (0.84m)

Cruise Speed: 30 Kts. (35 MPH)

Max Speed: 40 Kts. (46 MPH)

Our experienced yacht broker, Andrey Shestakov, will help you choose and buy a yacht that best suits your needs **No Name — CHAPARRAL** from our catalogue. Presently, at Shestakov Yacht Sales Inc., we have a wide variety of yachts available on our sale's list. We also work in close contact with all the big yacht manufacturers from all over the world.

If you would like to buy a yacht **No Name — CHAPARRAL** or would like help answering any questions concerning purchasing, selling or chartering a yacht, please call **+1(954)274-4435**

TABLE OF CONTENTS

TABLE OF CONTENTS	2
SPECIFICATIONS	5
Overview	5
Basic Information	5
Dimensions	5
Speed, Capacities and Weight	5
Accommodations	6
Hull and Deck Information	6
Engine Information	6
DETAILED INFORMATION	7
MAIN DESCRIPTION	7
31' CHAPARRAL COCKPIT	7
31' CHAPARRAL SALON	7
31' CHAPARRAL ELECTRONICS	7
31' CHAPARRAL ENGINES & MECHANICAL	7
31' CHAPARRAL DECK & SAFETY EQUIPMENT	8
DISCLAIMER	8
Exclusions	8
Disclaimer	8
PHOTOS	9
1.Port Profile Pic	9
2.Bow Profile Pic	9
3. Starboard Profile Pic	9
4. Bow & Hull Profile Dry	9
5. Starboard Profile Dry	9
6. Bottom Sterndrives Dry	9
7. Aft Profile	10
8. SwimPlatform	10

9. Deck View Forward	10
10. Windlass & Anchor	10
11. Windlass Anchor Hatch	10
12. Bow View Aft	10
13. Deck View Aft	11
14. Helm View 1	11
15. Helm View 2	11
16. Lounge Seat To Port	11
17. Aft View Wet Bar To Port	11
18. Aft Lounge View Forward To Starboard	11
19. Aft View Forward 2	12
20. 30 Amp Power Cord & Storage Aft	12
21. Aft Lounge To Starboard	12
22. Wetbar & Refrigerator	12
23. Aft Shower Port & Transom Door	12
24. Salon View Forward	12
26. Head, Shower & Sink	13
25. Salon Settee To Starboard	13
27. Head 2	13
28. Galley View To Port	13
29. Forward Berth & Flatscreen t.v.	14
30. Forward Berth View Aft	14
31. Forward Berth View Aft 2	14
32. Starboard Settee, Storage cabinets	14
33. Cedar Hanging Locker	14
34. Electrical Panel	14
36. CO 2 Alarm, Genset Start	15
35. Midship Double Berth	15
37. Volvo 5.7l Engines	15

38.Battery Bank	15
39.Raw Water Intake & Shutoff Valve	16
40. Bidge Pump	16
41. Fireboy Auto Extinguisher System	16
CONTACTS	17
Contact details	17
Telephones	17
Office hours	17
Address	17

SPECIFICATIONS

Overview

This Signature series express cruiser is one of Chaparrals most popular models. With only 250 hrs on the Volvo 5.7 engines, this girl is ready to run! The cockpit on this vessel is designed for comfort with a wrap around aft sitting area to port, wetbar refrigerator and transom door walk-through to port. The double helm chair is forward to starboard and provides the captain with excellent 360 visibility. There is also a walk through to access the forward deck. Chaparrals are noted for their roomy and elegant cabin layout. This mid cabin cruiser provides comfortable sleeping arrangements for two couples or a family of 4 or 5. Step down into the salon one finds a head and galley to port. There is a comfortable oval settee to starboard with mid cabin berth aft and a double built in berth forward. This vessel has been lift kept under cover. She is competitively priced and won't last long.

Basic Information

Category: Cruising Yacht

Sub Category: Express

Model Year: 2004

Year Built: 2004

Country: United States

Dimensions

LOA: 31' 0" (9.45m)

Beam: 10' 7" (3.23m)

Min Draft: 2' 9" (0.84m)

Max Draft: 2' 9" (0.84m)

Speed, Capacities and Weight

Cruise Speed: 30 Kts. (35 MPH)

Max Speed: 40 Kts. (46 MPH)

Displacement: 11395 Pounds

Water Capacity: 29 Gallons

Holding Tank: 18 Gallons

Fuel Capacity: 147 Gallons

Accommodations

Total Cabins: 2

Total Berths: 3

Total Heads: 1

Hull and Deck Information

Hull Material: Fiberglass

Engine Information

Engines: 2

Manufacturer: Volvo Penta

Model: 5.7 L

Engine Type: I/O

Fuel Type: Gas/Petrol

DETAILED INFORMATION

MAIN DESCRIPTION

This Signature series express cruiser is one of Chaparrals most popular models. With only 250 hrs on the Volvo 5.7 engines, this girl is ready to run! The cockpit on this vessel is designed for comfort with a wrap around aft sitting area to port, wetbar refrigerator and transom door walk-through to port. The double helm chair is forward to starboard and provides the captain with excellent 360 visibility. There is also a walk through to access the forward deck. Chaparrals are noted for their roomy and elegant cabin layout. This mid cabin cruiser provides comfortable sleeping arrangements for two couples or a family of 4 or 5. Step down into the salon one finds a head and galley to port. There is a comfortable oval settee to starboard with mid cabin berth aft and a double built in berth forward. This vessel has been lift kept under cover. She is competitively priced and won't last long.

31' CHAPARRAL COCKPIT

Access to the cockpit is via swim platform and transom door. There is a fresh water shower adjacent to the door. Moving forward to port, is a well appointed wetbar with sink, hot/cold faucet, stainless steel deep sink and refrigerator. To starboard is a wrap around seating area with removeable table. Forward of the seating is the double helm chair and to port is access down into the cabin. The helm console is well appointed with gauges and electronics for the captain. There is also a full length bimini top and radar arch. This is a very comfortable set up.

31' CHAPARRAL SALON

One enters the salon area via the sliding cabin door down 3 steps to find a beautiful settee and table to starboard. To port is the head and shower with a single deep stainless steel sink with storage underneath. The galley is adjacent to the head and has Kenyon 2 burner electric stove top, Samsung microwave, coffee maker and Isotherm refrigerator. The forward full bunk is thwart side and has a 19" flatscreen tv to port, overhead hatch with screen and 2 reading lights. The mid cabin berth is adjacent to the cabin stairs and is considered a double berth.

31' CHAPARRAL ELECTRONICS

This well appointed Chaparral has the following electronics:- Blaupunkt dvd player & Kenwood stereo- Flatscreen tv- 5 gallon water heater- Simrad auto pilot & chart plotter- Eclipse VHF radio- Ritchie compass- Depth finder- Delta windlass with helm and deck controls

31' CHAPARRAL ENGINES & MECHANICAL

This Signature series Chaparral is equipped with the following:- 2 Volvo Penta 5.7 Liter 320 hp engines with only 250 hrs- Onan 5kw generator with 72 hrs- Engine room access is in the aft cockpit with hydraulic lift for the hatch- Trim Tabs- Outdrive trim

31' CHAPARRAL DECK & SAFETY EQUIPMENT

Deck & Safety Equipment- Stainless steel railings & cleats- Windlass & anchor- Fenders & Lines- Fireboy automatic fire extinguisher system- 2 Bilge pumps- Horn- Lifejackets- CO2 & smoke alarm

DISCLAIMER

The Company offers the details of this vessel in good faith but cannot guarantee or warrant the accuracy of this information nor warrant the condition of the vessel. A buyer should instruct his agents, or his surveyors, to investigate such details as the buyer desires validated. This vessel is offered subject to prior sale, price change, or withdrawal without notice.

Exclusions

Owner's personal belongings.

Disclaimer

The Company offers the details of this vessel or yacht in good faith but cannot guarantee or warrant the accuracy of this information nor warrant the condition of the vessel. A buyer should instruct his representatives, agents, or his surveyors, to investigate such details as the buyer desires validated. This vessel or yacht is offered subject to prior sale, price change, or withdrawal without notice.

PHOTOS

1.Port Profile Pic



2.Bow Profile Pic



3. Starboard Profile Pic



4. Bow & Hull Profile Dry



5. Starboard Profile Dry



6. Bottom Sterndrives Dry



7. Aft Profile



8. SwimPlatform



9. Deck View Forward



10. Windlass & Anchor



11. Windlass Anchor Hatch



12. Bow View Aft



13. Deck View Aft



14. Helm View 1



15. Helm View 2



16. Lounge Seat To Port



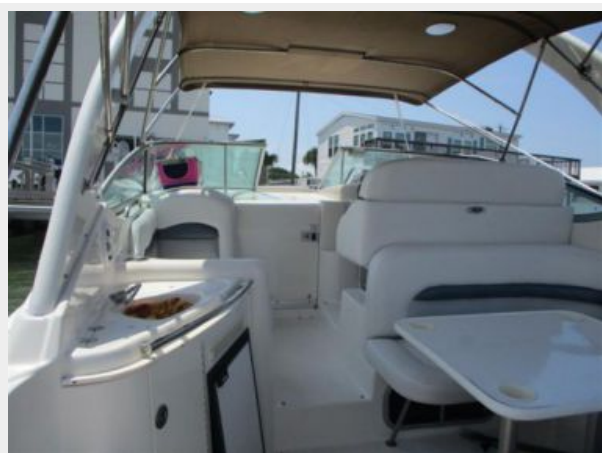
17. Aft View Wet Bar To Port



18. Aft Lounge View Forward To Starboard



19. Aft View Forward 2



20.30 Amp Power Cord & Storage Aft



21. Aft Lounge To Starboard



22. Wetbar & Refrigerator



23. Aft Shower Port & Transom Door



24. Salon View Forward



25. Salon Settee To Starboard



26. Head, Shower & Sink



27. Head 2



28. Galley View To Port



29. Forward Berth & Flatscreen t.v.



30. Forward Berth View Aft



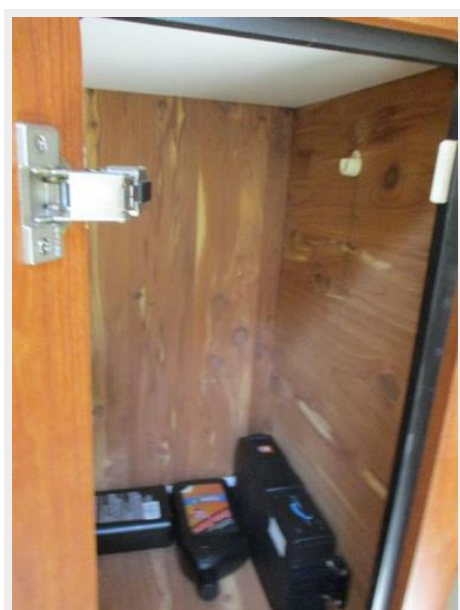
31. Forward Berth View Aft 2



32. Starboard Settee, Storage cabinets



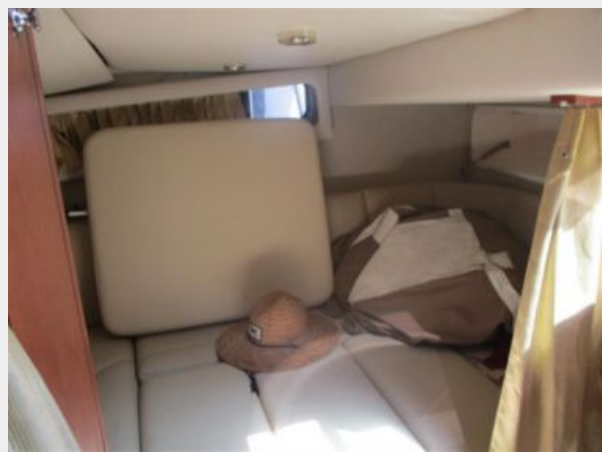
33. Cedar Hanging Locker



34. Electrical Panel



35. Midship Double Berth



36. CO 2 Alarm, Genset Start



37. Volvo 5.7l Engines



38. Battery Bank



39.Raw Water Intake & Shutoff Valve



40. Bidge Pump



41. Fireboy Auto Extinguisher System



CONTACTS

Andrey Shestakov, leading yacht broker of the sales department of Shestakov Yacht Sales Inc. Shestakov Yacht Sales Inc., the official representative of the Miami/Fort Lauderdale FL headquarters.

Contact details

Email:
andrey@shestakovyachtsales.com

Web: shestakovyachtsales.com/en/

Telephones

USA: **+1(954)274-4435**

Office hours

Monday – Saturday: **9:00 - 21:00 EDT**

Sunday: **closed**

Address



Harbour Towne Marina, 850 NE 3rd St,
STE 213, Dania, FL 33004