

## ONE LOVE — CRUISERS



**Builder:** CRUISERS

**Year Built:** 2005

**Model:** Motor Yacht

**Price:** PRICE ON APPLICATION

**Location:** United States

**LOA:** 45' 0" (13.72m)

**Beam:** 15' 4" (4.67m)

**Max Draft:** 3' 3" (0.99m)

**Cruise Speed:** 18 Kts. (21 MPH)

**Max Speed:** 23 Kts. (26 MPH)

Our experienced yacht broker, Andrey Shestakov, will help you choose and buy a yacht that best suits your needs **One Love — CRUISERS** from our catalogue. Presently, at Shestakov Yacht Sales Inc., we have a wide variety of yachts available on our sale's list. We also work in close contact with all the big yacht manufacturers from all over the world.

If you would like to buy a yacht **One Love — CRUISERS** or would like help answering any questions concerning purchasing, selling or chartering a yacht, please call **+1(954)274-4435**

# TABLE OF CONTENTS

TABLE OF CONTENTS	2
SPECIFICATIONS	5
Overview	5
Basic Information	5
Dimensions	5
Speed, Capacities and Weight	5
Accommodations	6
Hull and Deck Information	6
Engine Information	6
DETAILED INFORMATION	7
Accommodations	7
Galley	8
Bridge Deck and Exterior	8
Electronics and Navigation	9
Engines and Mechanical	9
Disclaimer	9
Exclusions	10
Disclaimer	10
PHOTOS	11
2	11
3	11
4	11
5	11
6	11
7	11
8	12
9	12
10	12

---

11	12
12	12
13	12
14	13
15	13
16	13
17	13
18	13
19	13
20	14
21	14
22	14
23	14
24	14
25	14
26	15
27	15
28	15
29	15
30	15
31	15
32	16
33	16
34	16
35	16
36	16
37	16
38	17
39	17

---

---

40	17
41	17
42	17
43	17
44	18
45	18
46	18
CONTACTS	19
Contact details	19
Telephones	19
Office hours	19
Address	19

---

# SPECIFICATIONS

---

## Overview

---

### Recent Upgrades, Low Hours, Well Equipped!

The Cruisers 455 Express Motoryacht is a very well-executed aft cabin design that has a lot to offer. The 455 has the roominess of an aft cabin with the feel of an express boat. She has a full bridge hardtop but has a hardtop clearance of 15' 4" making her a good choice for Loopers. She has two excellent staterooms with wonderful accommodations and a smaller third stateroom as well.

Powered by twin 480 HP Volvo Diesels with less than 900 total hours, upgraded electronics, Bridge Heat and AC, and fresh Bridge Upholstery, One Love is an excellent choice for a growing family or a travelling couple looking to entertain.

Please check the FULL SPECS, and call today to schedule an appointment to see her for yourself!

## Basic Information

---

**Category:** Motor Yacht

**Sub Category:** Aft Cabin

**Model Year:** 2005

**Year Built:** 2005

**Country:** United States

## Dimensions

---

**LOA:** 45' 0" (13.72m)

**Beam:** 15' 4" (4.67m)

**Max Draft:** 3' 3" (0.99m)

**Clearance:** 15' 4" (4.67m)

## Speed, Capacities and Weight

---

**Cruise Speed:** 18 Kts. (21 MPH)

**Max Speed:** 23 Kts. (26 MPH)

**Displacement:** 36000 Pounds

**Water Capacity:** 140 Gallons

**Holding Tank:** 100 Gallons

**Fuel Capacity:** 500 Gallons

---

## Accommodations

---

**Total Cabins:** 3

**Total Heads:** 2

---

## Hull and Deck Information

---

**Hull Material:** Fiberglass

---

## Engine Information

---

**Engines:** 2

**Manufacturer:** Volvo

**Model:** TAMD75

**Engine Type:** Inboard

**Fuel Type:** Diesel

---

# DETAILED INFORMATION

---

## Accommodations

---

Luxurious Overnight Accommodations in Three Private Staterooms. Two complete heads each with Shower stall - Master Stateroom features a Jacuzzi Tub that converts to a large shower.

### MASTER STATEROOM

- Island Style Queen Berth
- Make-up Vanity with stool
- Reading Lights
- Stereo Volume Control on Headboard
- Cedar Lined Closet
- Cherrywood Cabinetry with lots of storage in drawers and cabinets
- French Doors lead to Jacuzzi Tub
- Large Aft Window with Screen
- 4 Port windows with screens
- Built-in TV/DVD
- Custom Comforters and Window Treatments NEW 2020

### VIP STATEROOM

- Island Style Queen Berth
- Walk-in Cedar Lined Closet
- Overhead Hatch with Ocean Air Blind & Screen
- Port Windows
- Built-in TV/DVD
- Large Storage Drawers below Berth
- Cherrywood Cabinetry
- Stereo Volume Control at Headboard
- Custom Comforters and Window Treatments NEW 2020

### THIRD STATEROOM

- Privacy Door
- Twin Berths with filler to make Double Berth
- Storage below berths
- Reading Lights
- Cherrywood Cabinetry
- Custom Comforters and Window Treatments NEW 2020

### SALON

The salon is spacious and offers an L shaped Lounge with double recliners and a huge U

shaped Dinette.

- Sunbrella Snap-in Carpet Runners
- Decorator Pillow Package
- Color coordinated Window Treatments
- Quartz lighting throughout the interior
- Cherrywood Cabinetry
- Solid Surface Countertops
- Flatscreen TV with CD/DVD Theater Surround Sound
- Custom Window Treatments NEW 2020
- 

## Galley

---

The U shaped Galley is on the same level as the salon and features all modern appliances and a teak and holly simulated floor.

- Double Stainless Steel Sinks
- Solid Surface Countertop
- Microwave Convection Oven
- Built-in Coffee Maker
- Lots of storage in Cabinets and Drawers
- Full Size Refrigerator/Freezer

## Bridge Deck and Exterior

---

The exterior of this vessel is great for entertaining and features a full hardtop with Stamoid enclosure in excellent condition. The Bridge Deck is climate controlled with Reverse Cycle Heat and AC. The foredeck is easily accessed via the wing doors and features high railing, a flush mounted windlass compartment complete with fender and line storage. The Foredeck Sunpads are NEW and were installed in late 2020.

The Bridge also feature a complete refit of all seating and upholstery completed in 2020

- Bridge Reverse Cycle Heat and Air Conditioning
- Full Fiberglass Hardtop with Glass Panels
- Full Bridge Enclosure
- NEW Bridge Upholstery - NEW 2020
- Snap-in cockpit carpet
- Wet Bar with Icemaker and Refrigerator Combo
- Large Flatscreen TV Mounted Above Wet Bar

HELM



- Double Helm Seat with Captains Bolster
- Tilt Steering Wheel
- Windshield with wipers and washer
- Fusion Stereo with Amp and Helm Remote Control
- Remote Spotlight
- All Switches in Sealed Pod
- Keyless Starting
- Windlass Controls

---

## Electronics and Navigation

---

- Garmin 8612 Bundle - Chart Plotter and Radar NEW 2020
- Garmin 800 AIS NEW 2020
- ASUS AC 1750 WiFi Router NEW 2020
- Fusion UD 650 Stereo w Amplifier and Remote NEW 2020
- KVH TV1 Satellite TV System NEW 2020
- RayMarine AutoPilot
- Volvo Penta Multi-Function Engine Gauges
- Jabsco Remote Spotlight
- Bow Thruster
- ICom VHF Radio

---

## Engines and Mechanical

---

- Twin Volvo TAMD75 Diesel Engines - 480 HP Each - 860 Hours
- Onan 11.5 kW Generator in Sound Shield - 820 Hours
- Bow Thruster
- Bennett Trim Tabs
- Reverso Oil Exchange System
- Maxwell Anchor Windlass with Bow and Helm Remote
- Fireboy Automatic Fire Suppression System
- NEW AC Strainers 2020
- Racor Fuel Water Separators
- ProNautic Battery Charger
- Glendenning Cable Reel System

---

## Disclaimer

---

The Company offers the details of this vessel in good faith but cannot guarantee or warrant the accuracy of this information nor warrant the condition of the vessel. A buyer should instruct his agents, or his surveyors, to investigate such details as the buyer desires validated. This vessel is

offered subject to prior sale, price change, or withdrawal without notice.

## **Exclusions**

---

Owner's personal belongings.

## **Disclaimer**

---

The Company offers the details of this vessel or yacht in good faith but cannot guarantee or warrant the accuracy of this information nor warrant the condition of the vessel. A buyer should instruct his representatives, agents, or his surveyors, to investigate such details as the buyer desires validated. This vessel or yacht is offered subject to prior sale, price change, or withdrawal without notice.

# PHOTOS

2



3



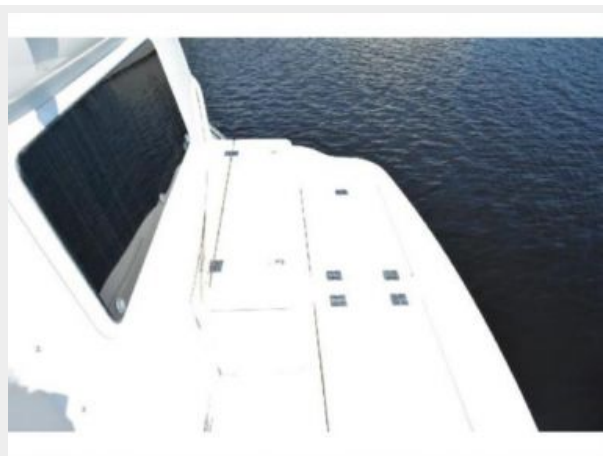
4



5



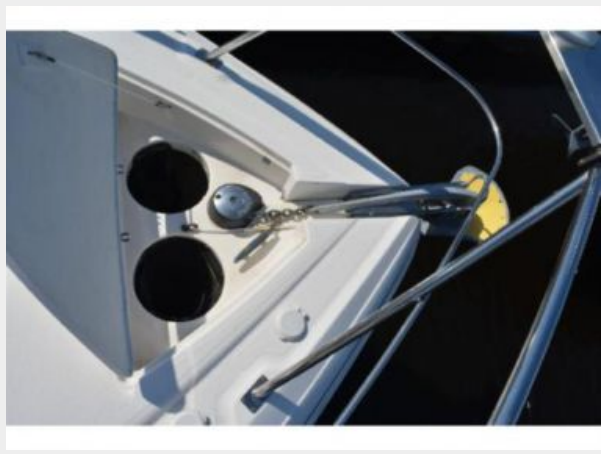
6



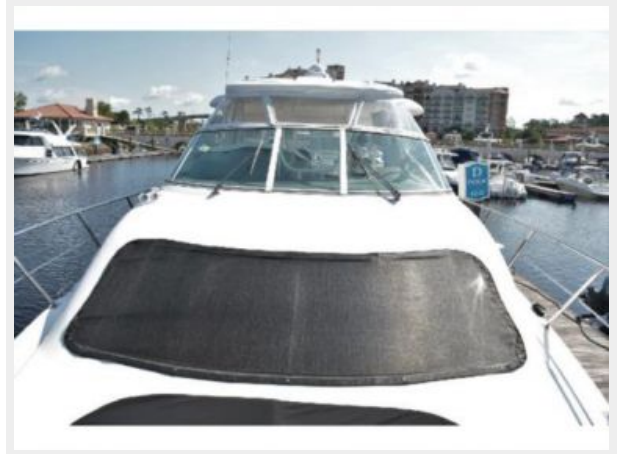
7



8



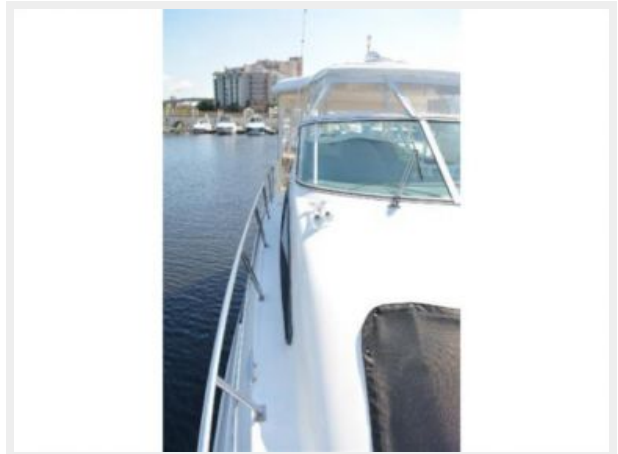
9



10



11



12



13



14



15



16



17



18



19



20



21



22



23



24



25



26



27



28



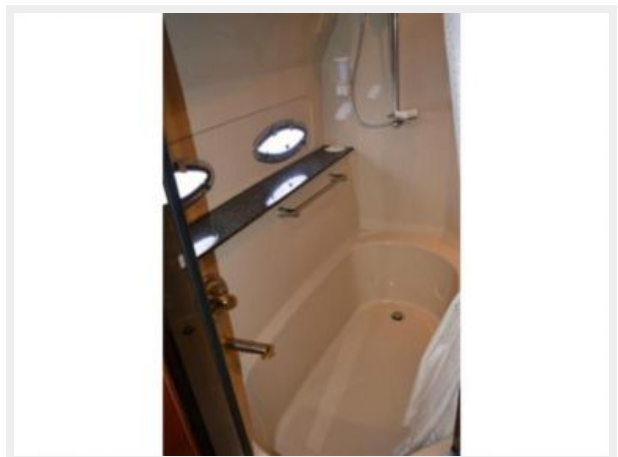
29



30



31



32



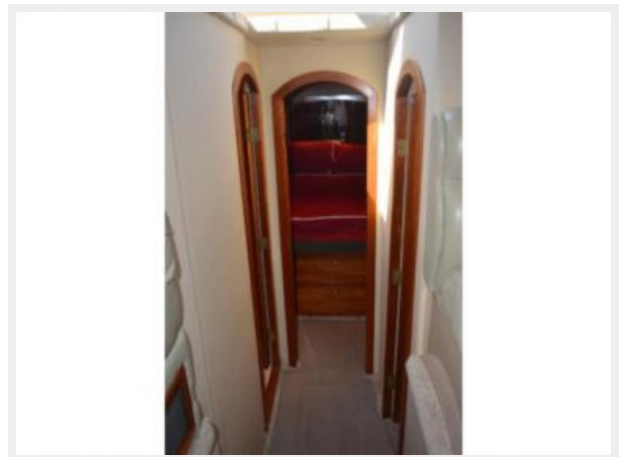
33



34



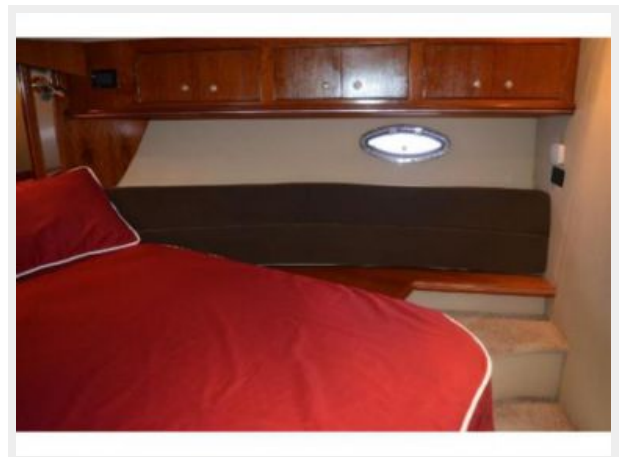
35



36



37





38



39



40



41



42



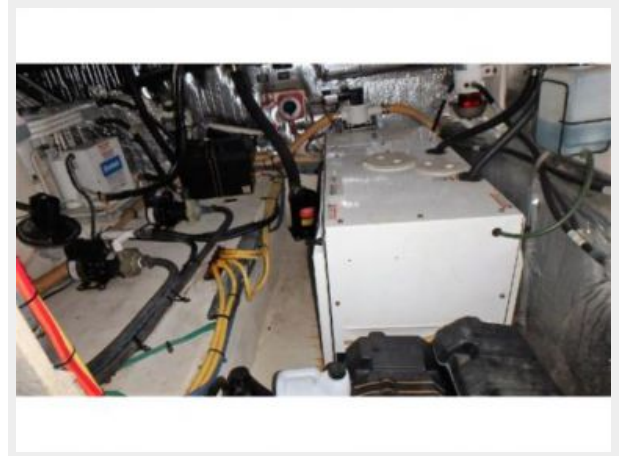
43



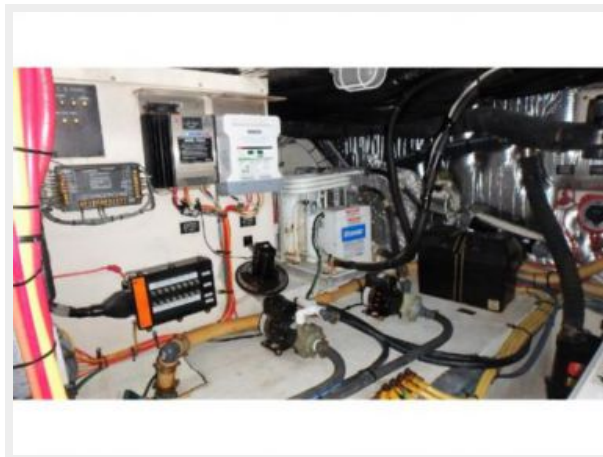
44



45



46



---

# CONTACTS

---

Andrey Shestakov, leading yacht broker of the sales department of Shestakov Yacht Sales Inc. Shestakov Yacht Sales Inc., the official representative of the Miami/Fort Lauderdale FL headquarters.

---

## Contact details

---

Email: [andrey@shestakovyachtsales.com](mailto:andrey@shestakovyachtsales.com)

Web: [shestakovyachtsales.com/en/](http://shestakovyachtsales.com/en/)

---

## Telephones

---

USA: +1(954)274-4435

---

## Office hours

---

Monday – Saturday: **9:00 - 21:00** EDT

Sunday: **closed**

---

## Address

---



Harbour Towne Marina, 850 NE 3rd St,  
STE 213, Dania, FL 33004