

## WILDCATTER — RITCHIE HOWELL



**Builder:** [Ritchie Howell](#)

**Year Built:** 2011

**Model:** Sport Fisherman

**Price:** PRICE ON APPLICATION

**Location:** United States

**LOA:** 54' 0" (16.46m)

**Beam:** 16' 6" (5.03m)

**Min Draft:** 4' 0" (1.22m)

**Cruise Speed:** 27 Kts. (31 MPH)

**Max Speed:** 32 Kts. (37 MPH)

Our experienced yacht broker, Andrey Shestakov, will help you choose and buy a yacht that best suits your needs **WILDCATTER — Ritchie Howell** from our catalogue. Presently, at Shestakov Yacht Sales Inc., we have a wide variety of yachts available on our sale's list. We also work in close contact with all the big yacht manufacturers from all over the world.

If you would like to buy a yacht **WILDCATTER — Ritchie Howell** or would like help answering any questions concerning purchasing, selling or chartering a yacht, please call **+1(954)274-4435**

# TABLE OF CONTENTS

TABLE OF CONTENTS	2
SPECIFICATIONS	5
Overview	5
Basic Information	5
Dimensions	6
Speed, Capacities and Weight	6
Accommodations	6
Hull and Deck Information	6
Engine Information	6
DETAILED INFORMATION	7
ABOUT	7
SPECIFICATIONS	7
UPDATES	14
SALEMAN'S REMARKS	14
EXCLUSIONS & DISCLAIMER	14
Exclusions	15
Disclaimer	15
PHOTOS	16
54' 2011 Ritchie Howell Express Sportfish Yacht WILDCATTER	16
54' 2011 Ritchie Howell Express Sportfish Yacht WILDCATTER	16
54' 2011 Ritchie Howell Express Sportfish Yacht WILDCATTER	16
54' 2011 Ritchie Howell Express Sportfish Yacht WILDCATTER	16
54' 2011 Ritchie Howell Express Sportfish Yacht WILDCATTER	17
54' 2011 Ritchie Howell Express Sportfish Yacht WILDCATTER	17
54' 2011 Ritchie Howell Express Sportfish Yacht WILDCATTER	17
54' 2011 Ritchie Howell Express Sportfish Yacht WILDCATTER	17
54' 2011 Ritchie Howell Express Sportfish Yacht WILDCATTER	18
54' 2011 Ritchie Howell Express Sportfish Yacht WILDCATTER	18

54' 2011 Ritchie Howell Express Sportfish Yacht WILDCATTER	18
54' 2011 Ritchie Howell Express Sportfish Yacht WILDCATTER	18
54' 2011 Ritchie Howell Express Sportfish Yacht WILDCATTER	19
54' 2011 Ritchie Howell Express Sportfish Yacht WILDCATTER	19
54' 2011 Ritchie Howell Express Sportfish Yacht WILDCATTER	19
54' 2011 Ritchie Howell Express Sportfish Yacht WILDCATTER	19
54' 2011 Ritchie Howell Express Sportfish Yacht WILDCATTER	20
54' 2011 Ritchie Howell Express Sportfish Yacht WILDCATTER	20
54' 2011 Ritchie Howell Express Sportfish Yacht WILDCATTER	20
54' 2011 Ritchie Howell Express Sportfish Yacht WILDCATTER	20
54' 2011 Ritchie Howell Express Sportfish Yacht WILDCATTER	20
54' 2011 Ritchie Howell Express Sportfish Yacht WILDCATTER	20
54' 2011 Ritchie Howell Express Sportfish Yacht WILDCATTER	20
54' 2011 Ritchie Howell Express Sportfish Yacht WILDCATTER	21
54' 2011 Ritchie Howell Express Sportfish Yacht WILDCATTER	21
54' 2011 Ritchie Howell Express Sportfish Yacht WILDCATTER	21
54' 2011 Ritchie Howell Express Sportfish Yacht WILDCATTER	21
54' 2011 Ritchie Howell Express Sportfish Yacht WILDCATTER	21
54' 2011 Ritchie Howell Express Sportfish Yacht WILDCATTER	21
54' 2011 Ritchie Howell Express Sportfish Yacht WILDCATTER	22
54' 2011 Ritchie Howell Express Sportfish Yacht WILDCATTER	22
54' 2011 Ritchie Howell Express Sportfish Yacht WILDCATTER	22
54' 2011 Ritchie Howell Express Sportfish Yacht WILDCATTER	22
54' 2011 Ritchie Howell Express Sportfish Yacht WILDCATTER	22
54' 2011 Ritchie Howell Express Sportfish Yacht WILDCATTER	23
54' 2011 Ritchie Howell Express Sportfish Yacht WILDCATTER	23
54' 2011 Ritchie Howell Express Sportfish Yacht WILDCATTER	23
54' 2011 Ritchie Howell Express Sportfish Yacht WILDCATTER	23
54' 2011 Ritchie Howell Express Sportfish Yacht WILDCATTER	23

---

54' 2011 Ritchie Howell Express Sportfish Yacht WILDCATTER	23
CONTACTS	24
Contact details	24
Telephones	24
Office hours	24
Address	24

---

# SPECIFICATIONS

---

## Overview

---

### PRELIMINARY LISTING

The 54 Ritchie Howell Express has an exceptional ride with outstanding performance and excellent economy. Her traditional cold molded triple layer Okumi bottom provides an amazingly soft dry ride in the roughest conditions. Her dependable Volvo IPS power provide a 28 KT cruise burning 50 GPH with amazing performance and maneuverability. The spacious cabin, full teak designer interior, two roomy staterooms with two full heads and a nicely appointed galley are just some of the exceptional features you are to find.

#### Highlights:

- Raised helm for great visibility
- Helm seating with storage
- Mezzanine seating with refrigeration
- Beautiful full teak interior
- Master aft with queen berth
- Simrad electronics

#### Updates:

- A/C units - 2017
- Ice maker system - 2017
- Stereo and TV systems - 2017
- Galley refrigerator and freezer - 2017
- Enclosure C2-shore - 2020
- Dometic mezzanine freezer system - 2020
- Full annual service - 2021
- Bottom paint - 2021
- Full detail - 2021
- Batteries - 2021

---

## Basic Information

---

**Category:** Sport Fisherman

**Model Year:** 2011

**Year Built:** 2011

**Country:** United States

## Dimensions

---

**LOA:** 54' 0" (16.46m)

**Beam:** 16' 6" (5.03m)

**Min Draft:** 4' 0" (1.22m)

## Speed, Capacities and Weight

---

**Cruise Speed:** 27 Kts. (31 MPH)

**Max Speed:** 32 Kts. (37 MPH)

**Displacement:** 48000 Pounds

**Water Capacity:** 250 Gallons

**Holding Tank:** 30 Gallons

**Fuel Capacity:** 1100 Gallons

## Accommodations

---

**Total Cabins:** 2

**Total Heads:** 2

## Hull and Deck Information

---

**Hull Material:** Composite

## Engine Information

---

**Engines:** 2

**Manufacturer:** Volvo

**Model:** D-900 D11

**Fuel Type:** Diesel

---

# DETAILED INFORMATION

---

## ABOUT

---

### PRELIMINARY LISTING

The 54 Ritchie Howell Express has an exceptional ride with outstanding performance and excellent economy. Her traditional cold molded triple layer Okumi bottom provides an amazingly soft dry ride in the roughest conditions. Her dependable Volvo IPS power provide a 28 KT cruise burning 50 GPH with amazing performance and maneuverability. The spacious cabin, full teak designer interior, two roomy staterooms with two full heads and a nicely appointed galley are just some of the exceptional features you are to find.

#### Highlights:

- Raised helm for great visibility
- Helm seating with storage
- Mezzanine seating with refrigeration
- Beautiful full teak interior
- Master aft with queen berth
- Simrad electronics

#### Updates:

- A/C units - 2017
- Ice maker system - 2017
- Stereo and TV systems - 2017
- Galley refrigerator and freezer - 2017
- Enclosure C2-shore - 2020
- Dometic mezzanine ice maker system - 2020
- Full annual service - 2021
- Bottom paint - 2021
- Full detail - 2021
- Batteries - 2021

---

## SPECIFICATIONS

---

### ACCOMMODATIONS & LAYOUT

Two staterooms with two full heads sleeping two owners and three guests. Entering from the helm deck, the salon and galley have a spacious, open and comfortable feeling. The master is located aft and is full beam with a queen berth to stb. The VIP is fwd with crossover bunks, one double and one single. Two full heads with showers.

## CABIN AREA

- Settee, U-shaped with storage
- Table, custom with inlay
- Countertops - Corian
- Entertainment center
- Television, 50" - Samsung
- Sound bar
- Cabinet storage
- Sole Amtico teak throughout
- Lighting, LED
- Headliner, insulated
- Rod storage, custom locker
- Rod storage, custom cabinet

## GALLEY

- Countertops - Corian
- Cooktop, 2 burner - H&K
- Refrigerator - Sub-Zero
- Freezer with ice maker - Sub-Zero
- Microwave, convection - Sharp
- Sink, stainless
- Disposal
- Fixture
- Cabinets, teak
- Drawer storage
- Trash bin

## MASTER

- Berth, queen, walk-around, storage with roll out drawers, to port
- Headboard, designer fabric
- Mattress, custom, foam & spring
- Soft goods, custom fitted
- Nightstand (2)
- Cabinets, port
- Hanging locker (2)
- Headliner, insulated
- Lighting, LED
- Sole, Amtico
- Flat screen TV, 36" - Samsung

## MASTER HEAD

- Vanity, lighted with storage



- Counter, composite
- Fixture - Dometic
- Shower door, glass
- Mirrored ceiling
- Lighting, LED
- Sole, teak - Amtico

## VIP

- Berth, double with storage
- Berth, single crossover
- Mattress, custom, foam & spring
- Soft goods, custom fitted
- Storage drawer
- Hanging locker
- Carpet
- Lighting, LED
- Entertainment center

## VIP ENSUITE HEAD

- Vanity, lighted with storage
- Counter, granite
- Fixture - Dometic
- Shower door, glass
- Mirrored ceiling
- Lighting, LED
- Sole, teak - Amtico

## ELECTRONICS & NAVIGATION

- Simrad radar, 72 mile
- Simrad radar, 24 mile
- Simrad autopilot, AP24
- Simrad GPS
- Simrad sounder
- ICOM VHF, IC-M504 (2)
- ICOM command mic (2)
- Compass, 8" - Ritchie
- Furuno FCV-1150
- AIS integrated into Simrad system
- KVH TracVision satellite TV
- ACR spotlight control
- Fusion stereo

## AUDIO/VIDEO

- KVH TracVision satellite tv
- Television - Samsung (3)
- Sound bar - Samsung (2)
- Fusion stereo

## MISC DECK & HULL

- Hull is JIG built, cold molded construction
- Deck, teak
- Covering boards, teak
- Toe rail, teak
- Handrail, teak
- Anchor locker
- Pulpit
- Windlass - Lift Mate
- Anchor - Plow Stainless
- Anchor rode, 250'
- Mezzanine deck
- Tower with fiberglass buggy top
- Tower seat
- Tower steering and controls
- Hardware, stainless
- Decorative lighting in deck hardtop

## HELM DECK

- Raised helm deck provides excellent visibility
- Helm pod, teak
- Helm chair, teak - Release
- Helm Seating, PRT & STB, with teak ladder backs
- Wheel, stainless, Palm Beach
- Controls, single lever - Volvo
- Shifters, stainless, Palm Beach
- Settee with storage, L-shaped
- Table, custom, teak
- Television, electric lift - Elements
- Enclosure, 4-sided
- Breaker panel, DC, port locker
- Non-skid deck
- Raised helm platform with teak overlay
- Switch panel in console
- Spotlight control - ACR
- Volvo LCDs (2)
- Volvo electronic engine controls with joystick controller
- VHF radios - ICOM IC-M504 (2)

- Simrad depth/radar/GPS plotter units (2)
- Furuno FCV-1150 color video sounder (1)
- Simrad AP24 autopilot
- Simrad IS20 data repeater (tower)
- Ritchie compass

## TOWER

- Anodized aluminum, 14 step
- Fiberglass hardtop with KVH M5 TracVision satellite television antenna
- Nonskid deck
- Padded bench seat with backrest
- Simrad repeater
- VHF radio - ICOM
- VHF antennas (2)
- Volvo controls
- Volvo LCD
- Steering wheel, stainless
- Lights, navigation, flush mounted, LED
- Lights, courtesy, LED

## ELECTRICAL SYSTEM

- Electrical panel, cabin, to STB
- AC 110/240, DC 12/24 V
- Outlets, 110 GFI protected
- Battery charger, 24 volt - Victron
- Lighting, 24 volt DC, 120 volt AC
- Lighting, LED, cabin
- Transformer, Iso-boost - Charles Industries (location - attic)
- Circuit breakers main vessel (location - attic) (2)
- Shore power, 50 amp - Hubble (1)

## GEN SET

- Generator, Norpro 20NY, 20KW, 1830 hrs
- Battery group 34 - Optima (in lazarette to generator) (1)
- Fiberglass muffler to generator
- Batteries, red top, group 34, ship service - Optima (8)
- Battery cutoff switch (2)
- Battery boxes

## ENGINE/MECHANICAL

- Twin Volvo Penta D11A-C MP 900's - Approx. 1550 hrs
- Volvo Penta inboard propulsion system (IPS), IPS-2A

- Volvo lower station has Palm Beach style controls
- Volvo displays, 7" color ECM's (2)
- Volvo touchpad, start/stop, sportfish
- Volvo joystick with slow speed, dynamic positioning system and sportfish mode
- Upper station has standard control, electronic helm, standard touchpad and joystick
- Engine room PCU hardware are both EVC-D
- Bilge pumps, auto (engine room) (2)
- Bilge pump, auto (aft)
- Alarms, high water (aft) (1)
- Water heater, 6 gallon - Kuuma (2)
- Ice chipper - Dometic
- Fuel transfer pump, AC (1)
- Fuel transfer pump, DC (1)
- Compressor cockpit freezer (1)
- Entry via cockpit with three step ladder
- Lighting AC & DC
- Fuel Filters Dual - Racor (2)

## TANKAGE

- Fresh water - 250 USG
- Fuel - 1100 USG
- Location, centerline, main cabin (1) aft cabin (2) port & stb
- Holding - 30 USG

## PERFORMANCE

RPM	KTS	Fuel Burn	Load %
2340	32	68 GPH	
2000	28	53 GPH	
1950	27	50 GPH	75
1800	23		

## COCKPIT

Mezzanine features:

- Freezer
- Engine room entry
- Freshwater fill cap, P&S
- Cushions
- Shore power, 50-amp inlet - Hubble (1)
- TV/phone inlet - Hubble (1)

- Freshwater washdown outlet
- Fish box in deck, P&S (2)
- Ice chipper, supply to STB ice box - Dometic
- Transom door
- Livewell transom glass, front lighted
- Fighting chair
- Outlets 12 volt outlets beneath cockpit gunnels (2)

## LAZARETTE

- Volvo pods
- Generator - Norpro 20KW
- Gen set muffler
- Gen set battery in covered box to generator, red top, group 34 - Optima
- Battery cutoff switch
- Lighting, AC & DC
- Bilge pumps, electric/automatic (2)
- Baitwell pump (1)
- Fish box macerator pumps (2)
- Raw water circulating pumps (2)
- Trim tab hydraulic pump/reservoir

## ATTIC STORAGE

- Behind the Mezzanine seat back, port side locker over engine room
- Storage locker over engine room
- Transformer, Iso-boost, 50 amp - Charles Industries
- Ship's power, main inlet circuit breakers
- Ice chipper, 600 PPD - Dometic
- Carpeted

## SAFETY

- Fire system - Fireboy 16.9 lb FE241
- Extinguishers, handheld (3)
- Orion Alert / Locate marine signal kit (1)

## FISHING

- Tower with steering controls
- Tower, fiberglass buggy top
- Tower seat with backrest
- Outriggers - Rupp
- Outlets, 24V, P&S (2)
- Tackle center
- Freezer cockpit

- Drink box, refrigerated
- Freshwater washdown outlet
- Saltwater washdown outlet
- Fish boxes are insulated in deck, P&S (2)
- Ice chipper supply to STB ice box
- Transom door
- Livewell transom glass, front lighted
- Fighting chair
- Underwater lights

## UPDATES

---

- Bottom paint - Seminole - 2021
- Engine service - Eagle Marine - 2021
- Complete detail, hull and topsides - 2021
- Fuel tanks cleaned - 2021
- Batteries - 2021
- Enclosure - 2020
- A/C units - 2017
- Ice maker system - 2017
- Stereo and TV systems - 2017
- Galley refrigerator and freezer - 2017

## SALEMAN'S REMARKS

---

*Wildcatter* is jig built, cold molded bottom, a rare find and exceptional value. Once aboard you question the abundant room and open feeling of the cabin and exterior decks. *Wildcatter* feels and rides like a much larger vessel. She is exceptional in stable ride in any sea conditions. *Wildcatter* is ready for sea trial and survey as both her knowledgeable owner and captain maintain this vessel to the highest level with no expense spared. The buyer should expect to find this Ritchie Howell Carolina Custom to be turnkey and ready to roll. We have up to date service records with a stellar history of dependable economical service. As expected, *Wildcatter*, provides a dry, soft ride with superb seakeeping ability and unbeatable economy providing over 500 NM of range.

## EXCLUSIONS & DISCLAIMER

---

Exclusions:

- Owner's personal belongings
- Artwork

- Fishing equipment
- Vessel name

The Company offers the details of this vessel in good faith but cannot guarantee or warrant the accuracy of this information nor warrant the condition of the vessel. A buyer should instruct his agents, or his surveyors, to investigate such details as the buyer desires validated. Engine and Generator Hours are at the date of the listing and provided by the vessel owner for information purposes only. Any and all information should be verified by the potential buyer and his surveyor prior to acceptance.

This vessel is offered subject to prior sale, price change, or withdrawal without notice.

## Exclusions

---

Owner's personal belongings.

## Disclaimer

---

The Company offers the details of this vessel or yacht in good faith but cannot guarantee or warrant the accuracy of this information nor warrant the condition of the vessel. A buyer should instruct his representatives, agents, or his surveyors, to investigate such details as the buyer desires validated. This vessel or yacht is offered subject to prior sale, price change, or withdrawal without notice.

# PHOTOS

**54' 2011 Ritchie Howell Express Sportfish  
Yacht WILDCATTER**



**54' 2011 Ritchie Howell Express Sportfish  
Yacht WILDCATTER**



**54' 2011 Ritchie Howell Express Sportfish  
Yacht WILDCATTER**



**54' 2011 Ritchie Howell Express Sportfish  
Yacht WILDCATTER**





## 54' 2011 Ritchie Howell Express Sportfish Yacht WILDCATTER



## 54' 2011 Ritchie Howell Express Sportfish Yacht WILDCATTER



## 54' 2011 Ritchie Howell Express Sportfish Yacht WILDCATTER



## 54' 2011 Ritchie Howell Express Sportfish Yacht WILDCATTER



### 54' 2011 Ritchie Howell Express Sportfish Yacht WILDCATTER



### 54' 2011 Ritchie Howell Express Sportfish Yacht WILDCATTER



### 54' 2011 Ritchie Howell Express Sportfish Yacht WILDCATTER

### 54' 2011 Ritchie Howell Express Sportfish Yacht WILDCATTER



## 54' 2011 Ritchie Howell Express Sportfish Yacht WILDCATTER



## 54' 2011 Ritchie Howell Express Sportfish Yacht WILDCATTER



## 54' 2011 Ritchie Howell Express Sportfish Yacht WILDCATTER



## 54' 2011 Ritchie Howell Express Sportfish Yacht WILDCATTER





**54' 2011 Ritchie Howell Express Sportfish  
Yacht WILDCATTER**



**54' 2011 Ritchie Howell Express Sportfish  
Yacht WILDCATTER**



**54' 2011 Ritchie Howell Express Sportfish  
Yacht WILDCATTER**



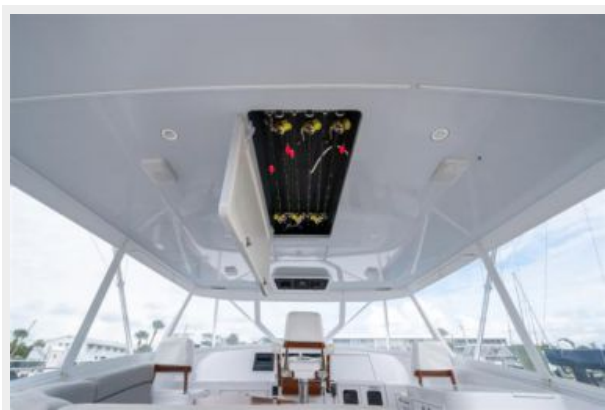
**54' 2011 Ritchie Howell Express Sportfish  
Yacht WILDCATTER**



**54' 2011 Ritchie Howell Express Sportfish  
Yacht WILDCATTER**

**54' 2011 Ritchie Howell Express Sportfish  
Yacht WILDCATTER**



**54' 2011 Ritchie Howell Express Sportfish  
Yacht WILDCATTER****54' 2011 Ritchie Howell Express Sportfish  
Yacht WILDCATTER****54' 2011 Ritchie Howell Express Sportfish  
Yacht WILDCATTER****54' 2011 Ritchie Howell Express Sportfish  
Yacht WILDCATTER****54' 2011 Ritchie Howell Express Sportfish  
Yacht WILDCATTER****54' 2011 Ritchie Howell Express Sportfish  
Yacht WILDCATTER**



**54' 2011 Ritchie Howell Express Sportfish  
Yacht WILDCATTER**



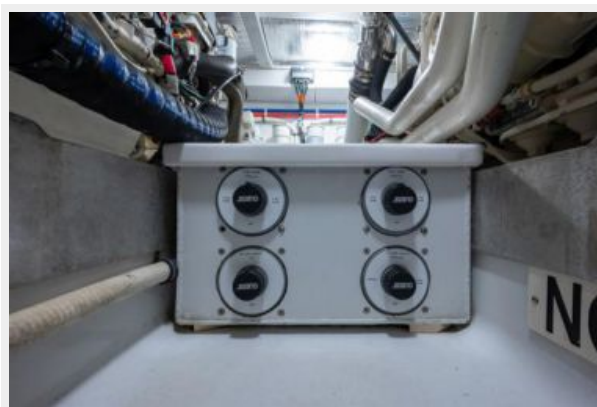
**54' 2011 Ritchie Howell Express Sportfish  
Yacht WILDCATTER**



**54' 2011 Ritchie Howell Express Sportfish  
Yacht WILDCATTER**



**54' 2011 Ritchie Howell Express Sportfish  
Yacht WILDCATTER**



**54' 2011 Ritchie Howell Express Sportfish  
Yacht WILDCATTER**



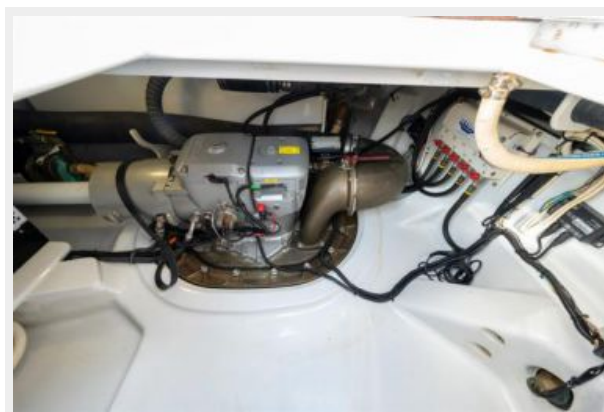
**54' 2011 Ritchie Howell Express Sportfish  
Yacht WILDCATTER**



**54' 2011 Ritchie Howell Express Sportfish  
Yacht WILDCATTER**



**54' 2011 Ritchie Howell Express Sportfish  
Yacht WILDCATTER**



**54' 2011 Ritchie Howell Express Sportfish  
Yacht WILDCATTER**



**54' 2011 Ritchie Howell Express Sportfish  
Yacht WILDCATTER**



**54' 2011 Ritchie Howell Express Sportfish  
Yacht WILDCATTER**



**54' 2011 Ritchie Howell Express Sportfish  
Yacht WILDCATTER**



# CONTACTS

---

Andrey Shestakov, leading yacht broker of the sales department of Shestakov Yacht Sales Inc. Shestakov Yacht Sales Inc., the official representative of the Miami/Fort Lauderdale FL headquarters.

## Contact details

---

Email: **andrey@shestakovyachtsales.com**

Web: [shestakovyachtsales.com/en/](http://shestakovyachtsales.com/en/)

## Telephones

---

USA: **+1(954)274-4435**

## Office hours

---

Monday – Saturday: **9:00 - 21:00 EDT**

Sunday: **closed**

## Address

---



Harbour Towne Marina, 850 NE 3rd St,  
STE 213, Dania, FL 33004