

## WHISPERING ANGEL — ISA YACHTS



**Builder:** ISA YACHTS

**Year Built:** 2008

**Model:** Motor Yacht

**Price:** PRICE ON APPLICATION

**Location:** Montenegro

**LOA:** 119' 8" (36.45m)

**Beam:** 24' 4" (7.40m)

**Cruise Speed:** 14 Kts. (16 MPH)

**Max Speed:** 26 Kts. (30 MPH)

Our experienced yacht broker, Andrey Shestakov, will help you choose and buy a yacht that best suits your needs **Whispering Angel — ISA YACHTS** from our catalogue. Presently, at Shestakov Yacht Sales Inc., we have a wide variety of yachts available on our sale's list. We also work in close contact with all the big yacht manufacturers from all over the world.

If you would like to buy a yacht **Whispering Angel — ISA YACHTS** or would like help answering any questions concerning purchasing, selling or chartering a yacht, please call **+1(954)274-4435**

---

# TABLE OF CONTENTS

---

TABLE OF CONTENTS	2
SPECIFICATIONS	3
Basic Information	3
Dimensions	3
Speed, Capacities and Weight	3
Accommodations	3
Hull and Deck Information	3
Engine Information	4
DETAILED INFORMATION	5
Description	5
Overview	5
Exclusions	5
Disclaimer	5
PHOTOS	6
CONTACTS	11
Contact details	11
Telephones	11
Office hours	11
Address	11

---

# SPECIFICATIONS

---

## Basic Information

---

**Category:** Motor Yacht

**Model Year:** 2008

**Year Built:** 2008

**Refit Year:** 2012

**Country:** Montenegro

## Dimensions

---

**LOA:** 119' 8" (36.45m)

**Beam:** 24' 4" (7.40m)

## Speed, Capacities and Weight

---

**Cruise Speed:** 14 Kts. (16 MPH)

**Max Speed:** 26 Kts. (30 MPH)

**Displacement:** 372581.22278 Pounds

**Water Capacity:** 1083.1054132 Gallons

**Fuel Capacity:** 6340.129248 Gallons

## Accommodations

---

**Total Cabins:** 5

## Hull and Deck Information

---

**Hull Material:** GRP

**Deck Material:** Teak

**Hull Configuration:** Deep Vee

**Hull Color:** White

**Exterior Designer:** Andrea Vallicelli

**Interior Designer:** Christino Gatto

---

## Engine Information

---

**Engines:** 3

**Manufacturer:** MTU

**Engine Type:** Inboard

**Fuel Type:** Diesel

---

# DETAILED INFORMATION

---

## Description

---

The 119.59ft /36.45m ISA 120 motor yacht 'Whispering Angel' was built in 2008 by ISA and last refitted in 2012. Previously named Junie II her luxurious interior was designed by Christino Gatto and her exterior styling is by Andrea Vallicelli. Whispering Angel's interior layout sleeps up to 10 guests in 5 staterooms, including a master suite, 2 double cabins and 2 twin cabins. She is also capable of carrying up to 6 crew onboard. Whispering Angel is a gorgeous example of an ISA 120 fast motor yacht offering style and performance with an extremely spacious interior. With an array of water sport equipment on offer for the more active guest, the addition of being able to use the comfortable alfresco dining areas for those who wish to make the most of the outdoors whilst onboard she really is an ideal yacht on which to make the most of the Mediterranean weather.

## Overview

---

### Extra Equipment:

- Five luxurious staterooms to accommodate 10 guests
- Well-appointed sundeck
- Plunge pool with black mosaic tiles
- Bose Sound System dock on the sundeck
- Ipad/Ipod controls throughout the yacht for the audio-visual systems and lighting
- Zero Speed stabilizers
- 2 x Yamaha Jet-Skis
- 1 x Novurania EQ 500LP Tender Volvo 160 HP Inboard

## Exclusions

---

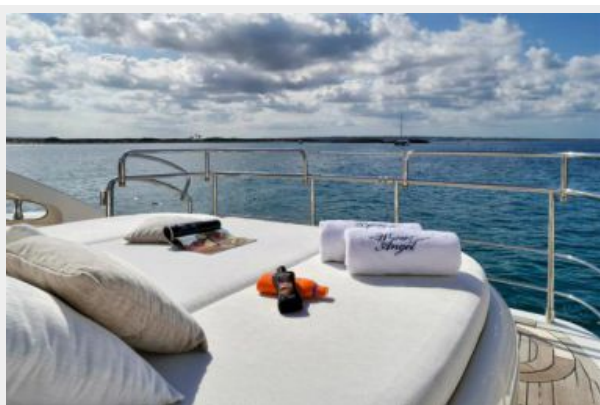
Owner's personal belongings.

## Disclaimer

---

The Company offers the details of this vessel or yacht in good faith but cannot guarantee or warrant the accuracy of this information nor warrant the condition of the vessel. A buyer should instruct his representatives, agents, or his surveyors, to investigate such details as the buyer desires validated. This vessel or yacht is offered subject to prior sale, price change, or withdrawal without notice.

# PHOTOS

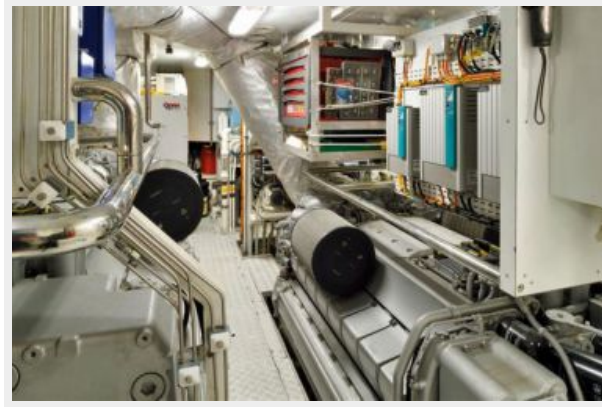












# CONTACTS

---

Andrey Shestakov, leading yacht broker of the sales department of Shestakov Yacht Sales Inc. Shestakov Yacht Sales Inc., the official representative of the Miami/Fort Lauderdale FL headquarters.

## Contact details

---

Email: [andrey@shestakovyachtsales.com](mailto:andrey@shestakovyachtsales.com)

Web: [shestakovyachtsales.com/en/](http://shestakovyachtsales.com/en/)

## Telephones

---

USA: +1(954)274-4435

## Office hours

---

Monday – Saturday: **9:00 - 21:00** EDT

Sunday: **closed**

## Address

---



Harbour Towne Marina, 850 NE 3rd St,  
STE 213, Dania, FL 33004