

DINAIA — SANLORENZO



Builder: [SANLORENZO](#)

Year Built: 2018

Model: Motor Yacht

Price: PRICE ON APPLICATION

Location: Italy

LOA: 105' 8" (32.20m)

Beam: 23' 2" (7.05m)

Max Draft: 6' 7" (2.00m)

Cruise Speed: 24 Kts. (28 MPH)

Max Speed: 30 Kts. (35 MPH)

Our experienced yacht broker, Andrey Shestakov, will help you choose and buy a yacht that best suits your needs **DINAIA — SANLORENZO** from our catalogue. Presently, at Shestakov Yacht Sales Inc., we have a wide variety of yachts available on our sale's list. We also work in close contact with all the big yacht manufacturers from all over the world.

If you would like to buy a yacht **DINAIA — SANLORENZO** or would like help answering any questions concerning purchasing, selling or chartering a yacht, please call **+1(954)274-4435**

TABLE OF CONTENTS

TABLE OF CONTENTS	2
SPECIFICATIONS	3
Basic Information	3
Dimensions	3
Speed, Capacities and Weight	3
Accommodations	3
Hull and Deck Information	3
Engine Information	3
DETAILED INFORMATION	4
Description	4
Overview	4
Exclusions	4
Disclaimer	4
PHOTOS	6
CONTACTS	9
Contact details	9
Telephones	9
Office hours	9
Address	9

SPECIFICATIONS

Basic Information

Category: Motor Yacht

Model Year: 2018

Year Built: 2018

Country: Italy

Dimensions

LOA: 105' 8" (32.20m)

LWL: 0' 0" (0.00m)

Beam: 23' 2" (7.05m)

Max Draft: 6' 7" (2.00m)

Speed, Capacities and Weight

Cruise Speed: 24 Kts. (28 MPH)

Max Speed: 30 Kts. (35 MPH)

Accommodations

Total Cabins: 5

Hull and Deck Information

Hull Material: GRP

Deck Material: Teak

Exterior Designer: Francesco Paszkowski

Interior Designer: Amellie Gillier

Engine Information

Engines: 2

Manufacturer: MTU

Model: 16V 2000 M93

Engine Type: Inboard

Fuel Type: Diesel

DETAILED INFORMATION

Description

The 105.64ft /32.20m SL106 motor yacht 'Dinaia' was built in 2018 by Sanlorenzo. The yacht's interior has been designed by Amélie Gillier and her exterior styling is by Francesco Paszkowski. M/Y Dinaia accommodates up to 10 guests in five exceptionally decorated staterooms. An atmospheric full beam master suite is located on the main deck, featuring huge full height windows, private dressing room, large bathrooms at the same level with the master suite. Descending to the lower deck four lavish suites are brilliantly set. Two VIP cabins with a queen size bed and Two double cabins with king size bed.

Overview

Accommodations:

- Cabin(s) - 5 + crew
- Berths - 10 + 6
- Sat. dish - receiver - Satellite TV
- Blu-ray / DVD - Apple TV /
- Internet - WiFi at all areas

Equipment:

- Stabilizers - Zero Speed
- Generator - 2x 45kW
- Generator hours - 1800
- Tender - Williams 445 TurboJet
- Watertoys - Wakeboard, mono ski, snorkeling equipment, fishing equipment, Jet ski Sea Doo 3-seater, Double Kayak, 2x SUP board, Windsurf, 3x Donuts, 2x Carbon Bicycles, additional toys upon requests

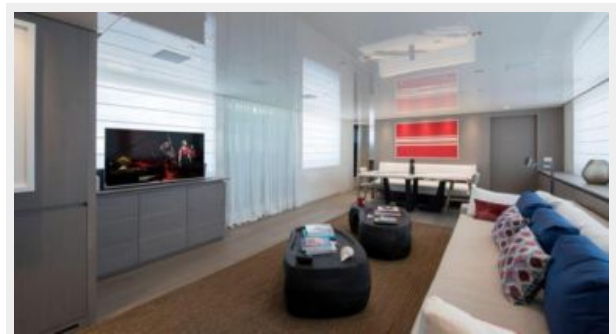
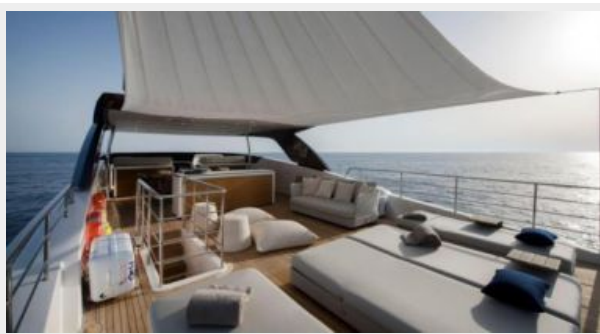
Exclusions

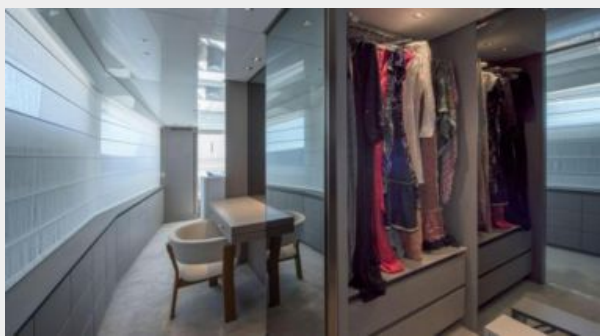
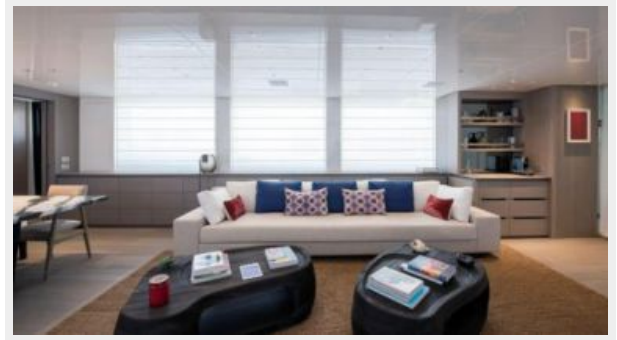
Owner's personal belongings.

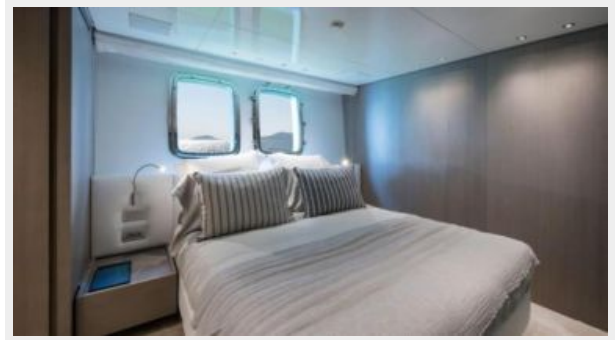
Disclaimer

The Company offers the details of this vessel or yacht in good faith but cannot guarantee or warrant the accuracy of this information nor warrant the condition of the vessel. A buyer should instruct his representatives, agents, or his surveyors, to investigate such details as the buyer desires validated. This vessel or yacht is offered subject to prior sale, price change, or withdrawal without notice.

PHOTOS







CONTACTS

Andrey Shestakov, leading yacht broker of the sales department of Shestakov Yacht Sales Inc. Shestakov Yacht Sales Inc., the official representative of the Miami/Fort Lauderdale FL headquarters.

Contact details

Email: andrey@shestakovyachtsales.com

Web: shestakovyachtsales.com/en/

Telephones

USA: +1(954)274-4435

Office hours

Monday – Saturday: **9:00 - 21:00** EDT

Sunday: **closed**

Address



Harbour Towne Marina, 850 NE 3rd St,
STE 213, Dania, FL 33004