

## NO LIMITS — JOYCE



**Builder:** JOYCE

**Year Built:** 2008

**Model:** Flybridge

**Price:** PRICE ON APPLICATION

**Location:** United States

**LOA:** 78' (23.77m)

**Beam:** 19

**Max Draft:** 5' (1.52m)

**Cruise Speed:** 20 Knots Kts. (23 MPH)

**Max Speed:** 23 Knots Kts. (26 MPH)

Our experienced yacht broker, Andrey Shestakov, will help you choose and buy a yacht that best suits your needs **No Limits — JOYCE** from our catalogue. Presently, at Shestakov Yacht Sales Inc., we have a wide variety of yachts available on our sale's list. We also work in close contact with all the big yacht manufacturers from all over the world.

If you would like to buy a yacht **No Limits — JOYCE** or would like help answering any questions concerning purchasing, selling or chartering a yacht, please call **+1(954)274-4435**

---

# TABLE OF CONTENTS

---

TABLE OF CONTENTS	2
SPECIFICATIONS	3
Overview	3
Basic Information	3
Dimensions	3
Speed, Capacities and Weight	3
Accommodations	4
Hull and Deck Information	4
Engine Information	4
PHOTOS	5
CONTACTS	11
Contact details	11
Telephones	11
Office hours	11
Address	11

---

# SPECIFICATIONS

---

## Overview

---

No shortage of sunpads on Joyce.

- The large pad on the bow and two sun pads on the flybridge, one shaded by the bimini. All exterior cushions and helm are covered by Sunbrella matching the bimini.
- The full-beam master stateroom is bright and airy with a settee and a desk. The head is to port with a split shower stall and commode stall. The ceramic tile really brightens the area up.
- The teak aft deck features a nice alfresco dining table, P&S boarding gates, and a refrigerator and sink.
- The entrance to the salon is through a double sliding Trend door.
- The light oak interior with wenge decks has a large leather U-shaped couch to port and opposite is the 42" flat screen on a lift, lots of storage, and an icemaker.
- Central Vacuum
- ABT stabilizers
- Port and starboard shore cords, the port is for the USA and the starboard is for the Med.

## Basic Information

---

**Category:** Flybridge

**Sub Category:** Flybridge

**Model Year:** 2008

**Year Built:** 2008

**Country:** United States

## Dimensions

---

**LOA:** 78' (23.77mm)

**Beam:** 19

**Max Draft:** 5' (1.52mm)

## Speed, Capacities and Weight

---

**Cruise Speed:** 20 Knots Kts. (23 MPH)

**Max Speed:** 23 Knots Kts. (26 MPH)

**Water Capacity:** 300 Gallons

**Fuel Capacity:** 1300 Gal Gallons

---

## Accommodations

---

**Total Cabins:** 4

**Sleeps:** 8

**Total Heads:** 4

**Crew Heads:** 1

---

## Hull and Deck Information

---

**Hull Material:** Fiberglass

---

## Engine Information

---

**Engines:** 2

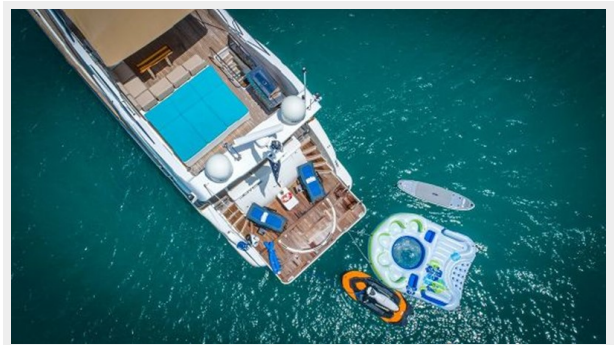
**Manufacturer:** MAN

**Engine Type:** Inboard

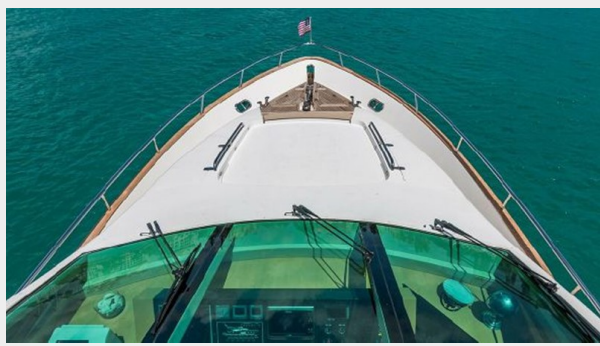
**Fuel Type:** Diesel



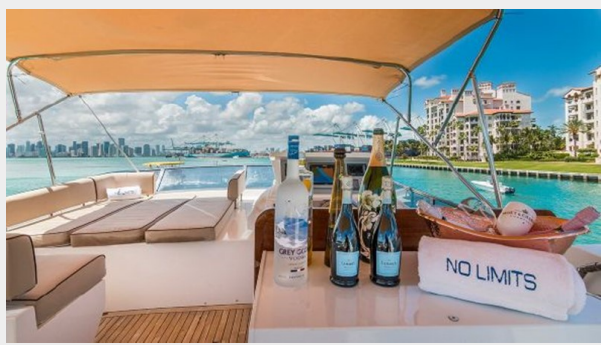
# PHOTOS



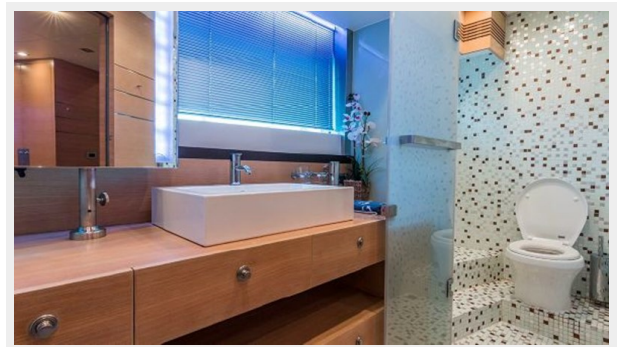
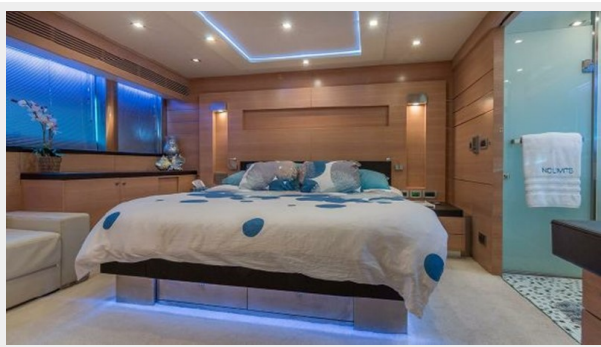
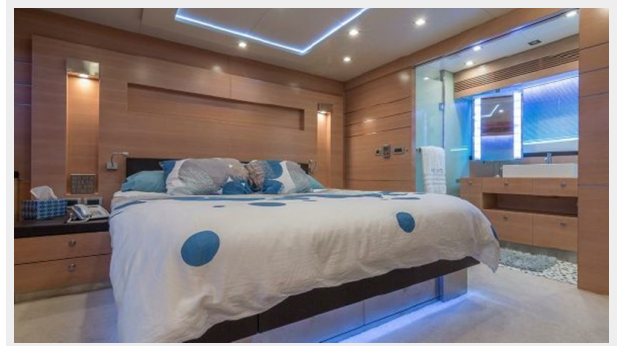


















---

# CONTACTS

---

Andrey Shestakov, leading yacht broker of the sales department of Shestakov Yacht Sales Inc. Shestakov Yacht Sales Inc., the official representative of the Miami/Fort Lauderdale FL headquarters.

---

## Contact details

---

Email: [andrey@shestakovyachtsales.com](mailto:andrey@shestakovyachtsales.com)

Web: [shestakovyachtsales.com/en/](http://shestakovyachtsales.com/en/)

---

## Telephones

---

USA: +1(954)274-4435

---

## Office hours

---

Monday – Saturday: **9:00 - 21:00** EDT

Sunday: **closed**

---

## Address

---



Harbour Towne Marina, 850 NE 3rd St,  
STE 213, Dania, FL 33004