

CLEAR EYES — PAX NAVI / OZHAN MOBILYA



Builder: PAX NAVI / OZHAN MOBILYA

Year Built: 2010

Model: Cruising Ketch

Price: PRICE ON APPLICATION

Location: Turkey

LOA: 144' (43.89m)

Beam: 30

Max Draft: 13' (3.96m)

Cruise Speed: 10 Knots Kts. (12 MPH)

Max Speed: 13 Knots Kts. (15 MPH)

Our experienced yacht broker, Andrey Shestakov, will help you choose and buy a yacht that best suits your needs **CLEAR EYES — PAX NAVI / OZHAN MOBILYA** from our catalogue. Presently, at Shestakov Yacht Sales Inc., we have a wide variety of yachts available on our sale's list. We also work in close contact with all the big yacht manufacturers from all over the world.

If you would like to buy a yacht **CLEAR EYES — PAX NAVI / OZHAN MOBILYA** or would like help answering any questions concerning purchasing, selling or chartering a yacht, please call **+1(954)274-4435**

TABLE OF CONTENTS

TABLE OF CONTENTS	2
SPECIFICATIONS	3
Overview	3
Basic Information	3
Dimensions	4
Speed, Capacities and Weight	4
Accommodations	4
Hull and Deck Information	4
Engine Information	4
PHOTOS	5
CONTACTS	14
Contact details	14
Telephones	14
Office hours	14
Address	14

SPECIFICATIONS

Overview

10 Year ABS Class Survey Completed + Full Repaint of the Hull in 2020.

The spacious interior of CLEAR EYES accommodates 10 guests in five staterooms. The full beam master is situated back aft and encompasses a king size bed, seating areas and a marble en suite bathroom. Forward of the master are two twin staterooms with single beds, these staterooms are tastefully decorated and very spacious, each with TV / entertainment system and internet. Midships is the versatile VIP stateroom, there is the option of one full beam VIP with queen size bed, large lounging area and his and hers bathrooms or using the partition wall to create two doubles both with queen sized beds and en suites. The main saloon is divided into four sections. Seating to port and a dining table set for eight to starboard take up the aft area. All freestanding furniture is Swiss and gold painted, and bright, daring upholstery in deep pinks, greens and oranges abounds, contrasting with a light brown deck head and moquette. The aft deck offers a huge sunbathing area with an integrated spa pool, alfresco dining and a little bar around the captain's helm station. The top deck is exclusively for sunbathing and relaxing. The front deck carries toys like Seabobs and jet skis, and has two very intimate crescent-shaped seats.

CLEAR EYES is a classic Bodrum Gulet design as a fast cruising ketch. Her hull & superstructure are steel with the superstructure covered with varnished African mahogany. She is an extremely comfortable yacht when underway much in part due to her large volume coming in at 277 gross tons.

CLEAR EYES benefits from the original owner & captain since new to assure seamless maintenance program since her launch. This winter season she will be completing her ABS 10 year class survey.

Timeless design and elegant interior decor.

Excellent value when comparing price per gross ton.

Basic Information

Category: Cruising Ketch

Model Year: 2010

Year Built: 2010

Refit Type: ABS 10 Year Class Survey & Paint

Country: Turkey

Dimensions

LOA: 144' (43.89mm)**LWL:** 118' (35.97mm)**Beam:** 30**Max Draft:** 13' (3.96mm)

Speed, Capacities and Weight

Cruise Speed: 10 Knots Kts. (12 MPH)**Cruise Speed Range:** 3510**Max Speed:** 13 Knots Kts. (15 MPH)**Gross Tonnage:** 277 Pounds**Water Capacity:** 6040 Gallons**Fuel Capacity:** 6834.13 Gal Gallons

Accommodations

Total Cabins: 5**Sleeps:** 12**Total Heads:** 6**Crew Cabin:** 8

Hull and Deck Information

Hull Material: Steel**Deck Material:** Teak and Steel**Hull Color:** White**Hull Designer:** PAX NAVI YACHTS**Exterior Designer:** Erkin Yagci**Interior Designer:** Erkin Yagci

Engine Information

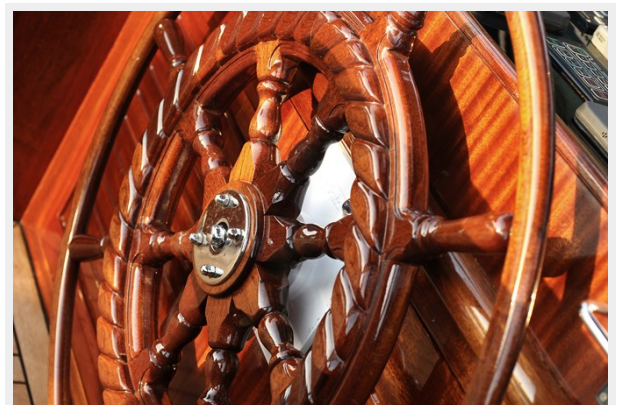
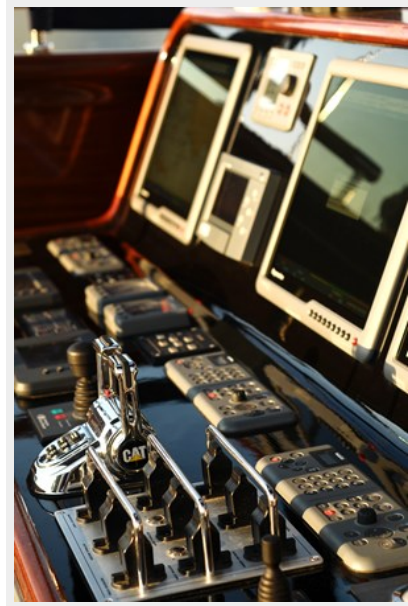
Engines: 2**Manufacturer:** CAT**Engine Type:** Inboard**Fuel Type:** Diesel

PHOTOS





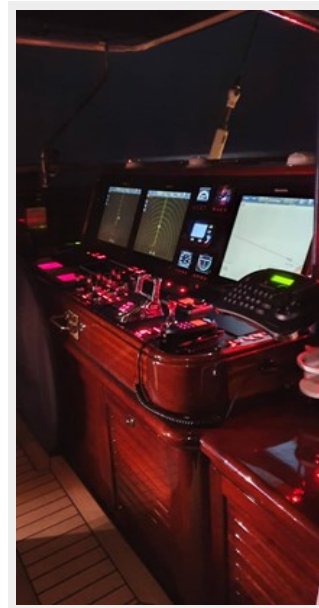


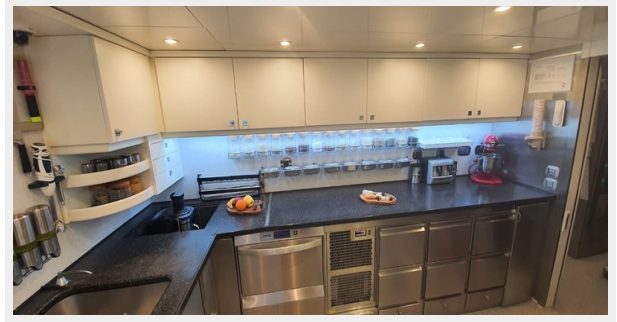












CONTACTS

Andrey Shestakov, leading yacht broker of the sales department of Shestakov Yacht Sales Inc. Shestakov Yacht Sales Inc., the official representative of the Miami/Fort Lauderdale FL headquarters.

Contact details

Email: andrey@shestakovyachtsales.com

Web: shestakovyachtsales.com/en/

Telephones

USA: +1(954)274-4435

Office hours

Monday – Saturday: **9:00 - 21:00** EDT

Sunday: **closed**

Address



Harbour Towne Marina, 850 NE 3rd St,
STE 213, Dania, FL 33004