

## THE PEARL — INTERMARINE



**Builder:** INTERMARINE

**Year Built:** 1998

**Model:** Motor Yacht

**Price:** PRICE ON APPLICATION

**Location:** United States

**LOA:** 118' (35.97mm)

**Beam:** 25

**Max Draft:** 6' 6" (1.98mm)

**Cruise Speed:** 15 Knots Kts. (17 MPH)

**Max Speed:** 20 Knots Kts. (23 MPH)

Our experienced yacht broker, Andrey Shestakov, will help you choose and buy a yacht that best suits your needs **The Pearl — INTERMARINE** from our catalogue. Presently, at Shestakov Yacht Sales Inc., we have a wide variety of yachts available on our sale's list. We also work in close contact with all the big yacht manufacturers from all over the world.

If you would like to buy a yacht **The Pearl — INTERMARINE** or would like help answering any questions concerning purchasing, selling or chartering a yacht, please call **+1(954)274-4435**

---

# TABLE OF CONTENTS

---

TABLE OF CONTENTS	2
SPECIFICATIONS	3
Overview	3
Basic Information	3
Dimensions	3
Speed, Capacities and Weight	4
Accommodations	4
Hull and Deck Information	4
Engine Information	4
PHOTOS	5
CONTACTS	14
Contact details	14
Telephones	14
Office hours	14
Address	14

---

# SPECIFICATIONS

---

## Overview

---

The Pearl is a rare 5-stateroom megayacht, built here in the U.S., and has just undergone an extensive refit.

She has many stand-out features. We highlight the more significant ones below:

- ABS Classification
- 5 Staterooms
- Caterpillar C32 ACERTS New in 2017
- 2 Northern Light Generators
- Exterior Paint New in 2017
- Teak New in 2017
- Atlas Shore Power System
- 2 Water-makers
- On-Deck Master Stateroom
- Private Captain's Cabin Aft of Pilothouse

## Basic Information

---

**Category:** Motor Yacht

**Model Year:** 1998

**Year Built:** 1998

**Country:** United States

## Dimensions

---

**LOA:** 118' (35.97mm)

**Beam:** 25

**Max Draft:** 6' 6" (1.98mm)

---

## Speed, Capacities and Weight

---

**Cruise Speed:** 15 Knots Kts. (17 MPH)

**Cruise Speed Range:** 1450

**Max Speed:** 20 Knots Kts. (23 MPH)

**Gross Tonnage:** 252 Pounds

**Water Capacity:** 793 Gallons

**Fuel Capacity:** 6800 Gal Gallons

---

## Accommodations

---

**Total Cabins:** 5

**Sleeps:** 10

**Crew Cabin:** 7

---

## Hull and Deck Information

---

**Hull Material:** Composite

**Exterior Designer:** Michael Pinna and Paola Smith

---

## Engine Information

---

**Engines:** 2

**Manufacturer:** Caterpillar

**Engine Type:** Inboard

**Fuel Type:** Diesel

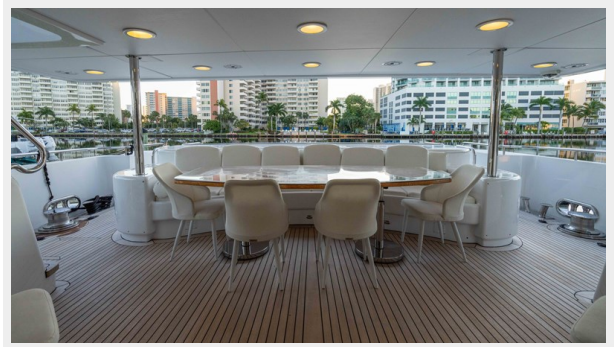
# PHOTOS



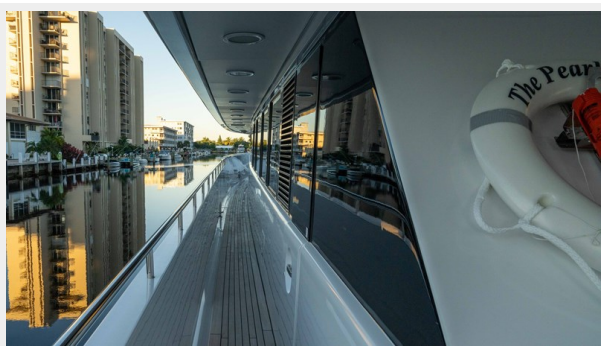












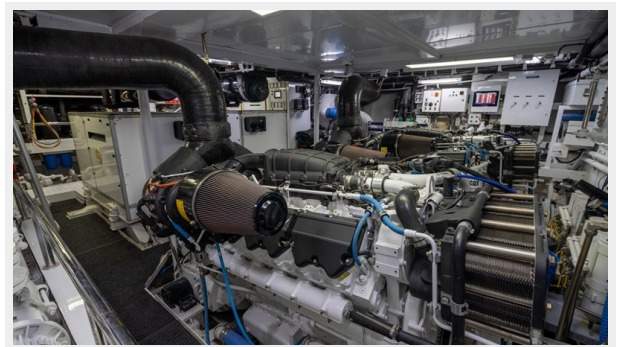




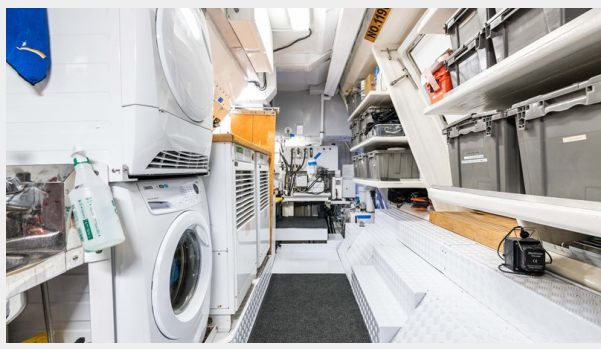
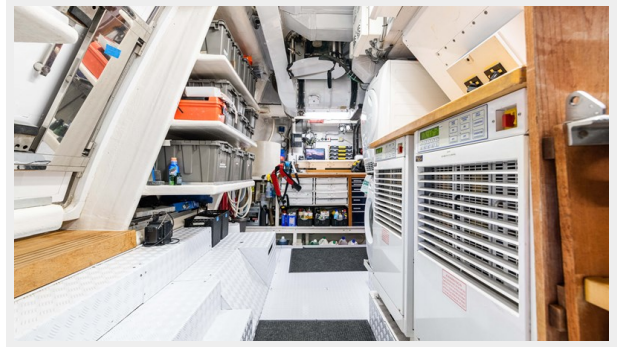












# CONTACTS

---

Andrey Shestakov, leading yacht broker of the sales department of Shestakov Yacht Sales Inc. Shestakov Yacht Sales Inc., the official representative of the Miami/Fort Lauderdale FL headquarters.

## Contact details

---

Email: [andrey@shestakovyachtsales.com](mailto:andrey@shestakovyachtsales.com)

Web: [shestakovyachtsales.com/en/](http://shestakovyachtsales.com/en/)

## Telephones

---

USA: +1(954)274-4435

## Office hours

---

Monday – Saturday: **9:00 - 21:00** EDT

Sunday: **closed**

## Address

---



Harbour Towne Marina, 850 NE 3rd St,  
STE 213, Dania, FL 33004