

## PLEXI VII — HATTERAS



**Builder:** HATTERAS

**Year Built:** 2006

**Model:** Cruising Yacht

**Price:** PRICE ON APPLICATION

**LOA:** 64' (19.51mm)

**Beam:** 18.25

**Max Draft:** 4' 8" (1.42mm)

**Cruise Speed:** 26 Knots Kts. (30 MPH)

**Max Speed:** 30 Knots Kts. (35 MPH)

Our experienced yacht broker, Andrey Shestakov, will help you choose and buy a yacht that best suits your needs **PLEXI VII — HATTERAS** from our catalogue. Presently, at **Shestakov Yacht Sales Inc.**, we have a wide variety of yachts available on our sale's list. We also work in close contact with all the big **yacht manufacturers** from all over the world.

If you would like to buy a yacht **PLEXI VII — HATTERAS** or would like help answering any questions concerning purchasing, selling or chartering a yacht, please call **+1(954)274-4435**

# TABLE OF CONTENTS

TABLE OF CONTENTS	2
SPECIFICATIONS	7
Overview	7
Basic Information	9
Dimensions	9
Speed, Capacities and Weight	9
Accommodations	9
Hull and Deck Information	9
Engine Information	10
PHOTOS	11
64 Hatt Profile 2	11
64 Hatt Port Profile 11	11
64 Hatt Strb Profile 1	11
64 Hatt Bow Profile 2	11
64 Hatt Bow Profile 5	11
64 Hatt Port Profile 4	11
64 Hatt Bow Profile 10	12
DSC_5991	12
DSC_5912	12
DSC_5913	12
DSC_5915	12
DSC_5916	12
DSC_5917	13
DSC_5918	13
DSC_5919	13
DSC_5920	13
DSC_5921	13
DSC_5922	13

DSC_5924	14
DSC_5925	14
DSC_5926	14
DSC_5927	14
DSC_5928	14
DSC_5929	14
64 Hatt Dinette 25	15
DSC_5930	15
64 Hatt Dinette 26	15
DSC_5928	15
64 Hatt Galley 24	15
DSC_5931	15
64 Hatt Galley 23	16
64 Hatt Galley 22	16
DSC_5932	16
DSC_5933	16
DSC_5934	16
DSC_5935	16
DSC_5936	17
DSC_5937	17
64 Hatt Washer-Dry 45	17
DSC_5938	17
DSC_5939	17
DSC_5940	17
DSC_5941	18
DSC_5942	18
DSC_5943	18
DSC_5944	18
DSC_5945	18

DSC_5946	18
DSC_5947	19
DSC_5948	19
DSC_5949	19
DSC_5950	19
DSC_5951	19
DSC_5952	19
DSC_5953	20
DSC_5954	20
DSC_5955	20
DSC_5956	20
DSC_5957	20
DSC_5958	20
DSC_5959	21
DSC_5960	21
DSC_5961	21
DSC_5962	21
DSC_5963	21
DSC_5964	21
DSC_5965	22
DSC_5966	22
DSC_5967	22
DSC_5968	22
DSC_5969	22
DSC_5970	22
DSC_5971	23
DSC_5972	23
DSC_5973	23
DSC_5974	23

64 Hatt Bridge 46	23
64 Hatt Bridge 47	23
64 Hatt Bridge 51	24
DSC_5976	24
DSC_5977	24
DSC_5979	24
DSC_5982	24
DSC_5983	24
DSC_5978	25
DSC_5981	25
DSC_5992	25
DSC_5988	25
DSC_5989	25
DSC_5989	25
DSC_5990	26
64 Hatt Aft Deck 12	26
DSC_5993	26
DSC_5994	26
DSC_5995	26
DSC_5996	26
DSC_5997	27
DSC_5998	27
DSC_5999	27
DSC_6000	27
DSC_6002	27
DSC_6003	27
64 Hatt Laz 67	28
DSC_6004	28
64 Hatt Laz 68	28

64 Hatt Laz 73	28
64 Hatt Laz69	28
DSC_5986	28
64 Hatt Ladder 84	29
64 Hatt Ladder 85	29
64 Hatt Bow face Aft 62	29
64 Hatt Bow 61	29
64 Hatt Port Bow Profile 3	30
CONTACTS	31
Contact details	31
Telephones	31
Office hours	31
Address	31

---

# SPECIFICATIONS

---

## Overview

---

This is a very well maintained, extensively equipped and updated 2006 Hatteras 64 Motoryacht. This vessel has the upgraded engine package with MTU Common Rail 10V-2000 M93 @ 1500hp each. It is also the only 64 Hatteras on the market with Trac Zero Speed Stabilizers which were installed in 2017. The combination of the upgraded power package and the stabilizers provide superior performance and unsurpassed ride quality in its class. The main engines have just over 1200 hours and were just serviced in June of 2019 at which time PLEXI VII also received fresh bottom paint and an exterior detail in September 2019.

There are upgraded Garmin electronics at both helms (2016) and there is a bow and stern thruster with a Yacht Controller for precise handling around the dock.

The interior is in excellent condition with newer sofa, carpet, mattresses and bedding. A new wine cooler and refrigerator in the salon provide convenient access to refreshments. There is a 42 inch flat screen TV, LED lighting, a large custom sofa with storage beneath the seats and beautiful high gloss Cherry wood bulkheads. The fully equipped galley features under the counter Sub Zero refrigerator/freezer drawers, Microwave/Convection oven, under the counter conventional oven and a dishwasher. The galley also features granite counter tops and Amtico flooring. The large dinette seating is located to port of the galley. The stairway leading to the lower stateroom accommodations is located forward of the galley on the starboard side. There is abundant storage located in the bulkheads of the stairway. Below, the master stateroom is located aft and is full beam with a king size bed, hanging lockers port and starboard and a private head with shower. There is a 20 inch TV and nightstands with drawers. Moving forward there is a separate washer and dryer located in the companionway. The guest stateroom is located to port and has two separate single berths, air conditioner thermostat controls and private access to the day head. The VIP berth is located all the way forward and features a Queen size bed and a private head with shower.

There is an interior stairway which leads from the salon to the fly bridge which features two Pompanette Platinum Series helm chairs. The helm has two Garmin 7616 MFDs, Simrad Auto Pilot and ICOM VHF. There is a four sided enclosure and air conditioning along with a sink, electric grill and ice maker. There is ample built in seating on the port side and a table and chairs. Aft of the enclosure is the davit for an optional dingy and more entertainment area. The owner has added custom stainless railing around this area to make it a more secure and usable area for entertaining.

PLEXI VII is ready to cruise with a recently serviced water maker and two 21.5 KW generators. The large, well designed engine room is clean and organized and there is a

large lazarette with ample storage and work space which is air conditioned. There are two bunks located in this area as well.

Below is a partial list of upgrades and updates featured on PLEXI VII:

- \* Trac Zero Speed Stabilizers (03-17)
- \* Engines Serviced (06-19)
- \* Bottom Painted (06-19)
- \* Exterior Detail (09-19)
- \* New Trim Tab Control Box/Actuator (06-19)
- \* Rebuilt Watermaker Pump (09-18)
- \* New Wine Cooler (08-18)
- \* Installed underwater lights (07-18)
- \* New Mach 5 FW Pump (06-19)
- \* New Air Conditioning Pumps (2) (03-18)
- \* Custom Aft Bridge Railings Install (12-17)
- \* New Stern Thruster (electric) (12-17)
- \* New port AGM batteries (11-17)
- \* New Whisperwall installed lower companionway (10-17)
- \* New Salon Sofa (03-17)
- \* New Garmin 7600 series Chartplotter and Radar (2016)
- \* Interior LED lighting installed (2016)
- \* New upholstery on bridge, aft deck, bow and dinette areas (2016)
- \* New Seagrass flooring on bridge and aft deck (2016)
- \* Custom cushion on flybridge forward of helm (2016)
- \* Main deck windows resealed (2016)
- \* New batteries (2016)
- \* New interior carpets (2015)



\* New mattresses (2015)

The above list is not all inclusive but illustrates the ongoing maintenance and attention that PLEXI VII receives from her owner.

---

## Basic Information

---

**Category:** Cruising Yacht

**Sub Category:** Cabin Cruiser

**Model Year:** 2006

**Year Built:** 2006

---

## Dimensions

---

**LOA:** 64' (19.51mm)

**Beam:** 18.25

**Max Draft:** 4' 8" (1.42mm)

---

## Speed, Capacities and Weight

---

**Cruise Speed:** 26 Knots Kts. (30 MPH) **Max Speed:** 30 Knots Kts. (35 MPH)

**Water Capacity:** 265 Gallons

**Holding Tank:** 95 Gal Gallons

**Fuel Capacity:** 1515 Gal Gallons

---

## Accommodations

---

**Total Cabins:** 3

**Total Heads:** 3

---

## Hull and Deck Information

---

**Hull Material:** Fiberglass

**Deck Material:** Fiberglass

**Hull Configuration:** Planing

**Hull Color:** White

---

## Engine Information

---

**Engines:** 2

**Manufacturer:** MTU

**Engine Type:** Inboard

**Fuel Type:** Diesel

# PHOTOS

**64 Hatt Port Profile 11**



**64 Hatt Profile 2**



**64 Hatt Strb Profile 1**



**64 Hatt Bow Profile 2**



**64 Hatt Bow Profile 5**



**64 Hatt Port Profile 4**





**64 Hatt Bow Profile 10**



**DSC\_5991**



**DSC\_5912**



**DSC\_5913**



**DSC\_5915**



**DSC\_5916**



DSC\_5917



DSC\_5918



DSC\_5919



DSC\_5920



DSC\_5921



DSC\_5922





DSC\_5924



DSC\_5925



DSC\_5926



DSC\_5927



DSC\_5928



DSC\_5929



**64 Hatt Dinette 25**

**DSC\_5930**



**64 Hatt Dinette 26**



**DSC\_5928**



**64 Hatt Galley 24**



**DSC\_5931**





64 Hatt Galley 23



64 Hatt Galley 22



DSC\_5932



DSC\_5933



DSC\_5934



DSC\_5935

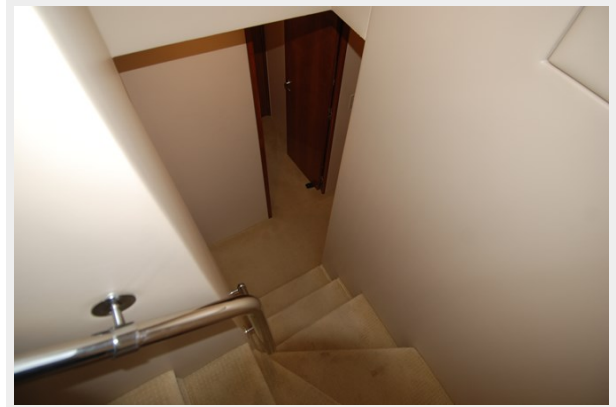




**DSC\_5936**



**DSC\_5937**



**64 Hatt Washer-Dry 45**



**DSC\_5938**



**DSC\_5939**



**DSC\_5940**



DSC\_5941



DSC\_5942



DSC\_5943



DSC\_5944



DSC\_5945



DSC\_5946





DSC\_5947



DSC\_5948



DSC\_5949



DSC\_5950



DSC\_5951



DSC\_5952



DSC\_5953



DSC\_5954



DSC\_5955



DSC\_5956



DSC\_5957



DSC\_5958





DSC\_5959



DSC\_5960



DSC\_5961



DSC\_5962



DSC\_5963



DSC\_5964



DSC\_5965



DSC\_5966



DSC\_5967



DSC\_5968



DSC\_5969



DSC\_5970





**DSC\_5971**



**DSC\_5972**



**DSC\_5973**



**DSC\_5974**



**64 Hatt Bridge 46**



**64 Hatt Bridge 47**



**64 Hatt Bridge 51**



**DSC\_5976**



**DSC\_5977**



**DSC\_5979**



**DSC\_5982**



**DSC\_5983**





DSC\_5978



DSC\_5981



DSC\_5992



DSC\_5988



DSC\_5989



DSC\_5989



**DSC\_5990**



**64 Hatt Aft Deck 12**



**DSC\_5993**



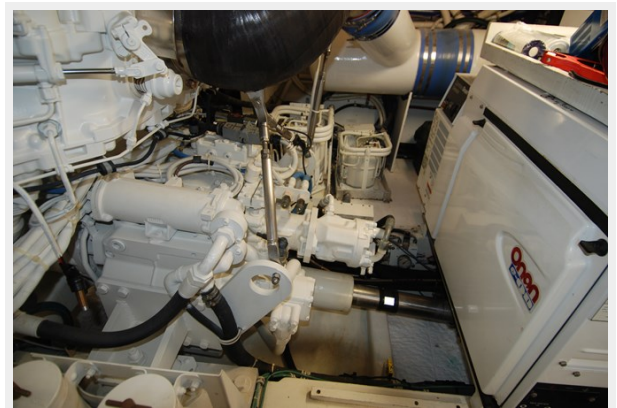
**DSC\_5994**



**DSC\_5995**



**DSC\_5996**





**DSC\_5997**



**DSC\_5998**



**DSC\_5999**



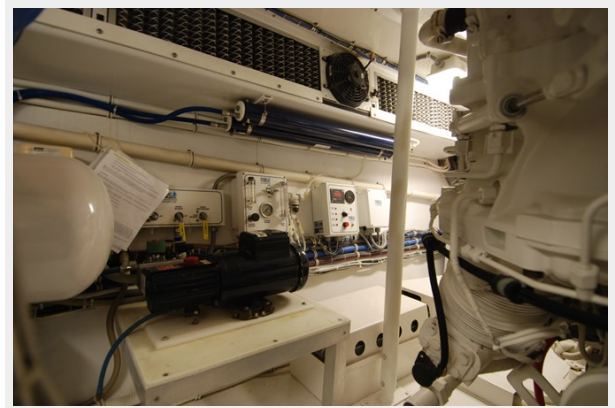
**DSC\_6000**



**DSC\_6002**



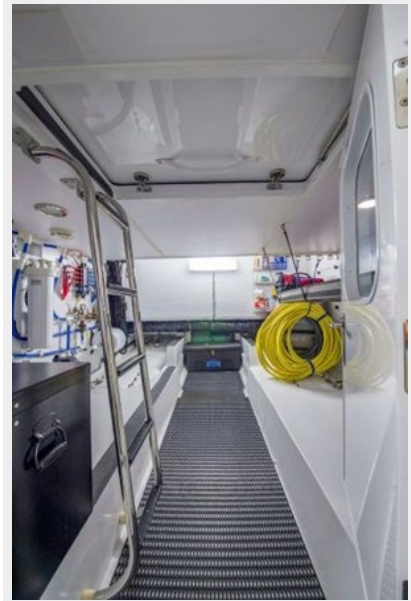
**DSC\_6003**



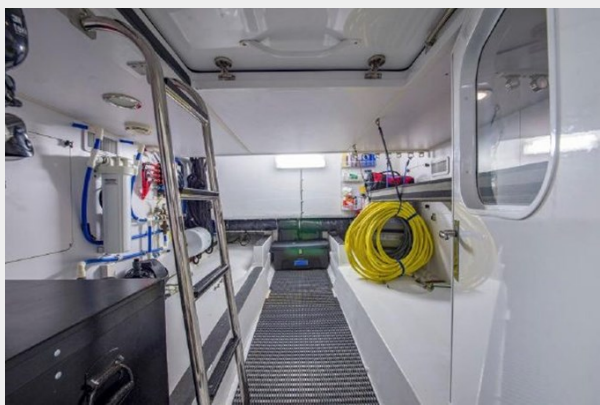
**DSC\_6004**



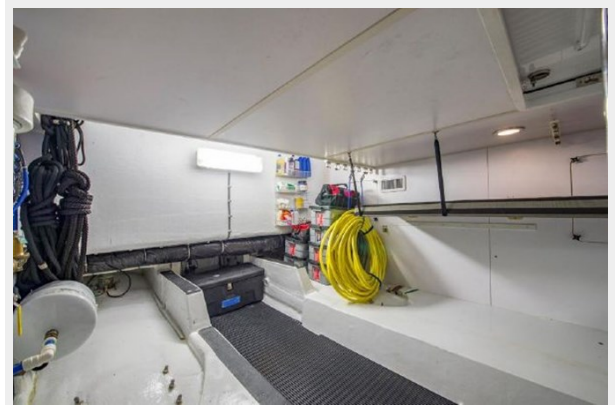
**64 Hatt Laz 67**



**64 Hatt Laz 68**



**64 Hatt Laz 73**



**64 Hatt Laz69**

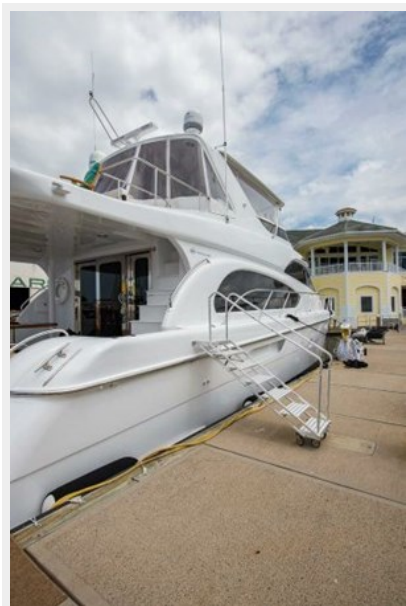


**DSC\_5986**





**64 Hatt Ladder 84**



**64 Hatt Ladder 85**



**64 Hatt Bow face Aft 62**



**64 Hatt Bow 61**



### 64 Hatt Port Bow Profile 3



# CONTACTS

---

Andrey Shestakov, leading yacht broker of the sales department of Shestakov Yacht Sales Inc. Shestakov Yacht Sales Inc., the official representative of the Miami/Fort Lauderdale FL headquarters.

## Contact details

---

Email: **andrey@shestakovyachtsales.com**

Web: [shestakovyachtsales.com/en/](https://shestakovyachtsales.com/en/)

## Telephones

---

USA: **+1(954)274-4435**

## Office hours

---

Monday – Saturday: **9:00 - 21:00** EDT

Sunday: **closed**

## Address

---



Harbour Towne Marina, 850 NE 3rd St, STE 213, Dania, FL 33004