

REEL FUN SR — MEDITERRANEAN



Builder: MEDITERRANEAN

Year Built: 2001

Model: Convertible

Price: PRICE ON APPLICATION

Location: United States

LOA: 54' (16.46m)

Cruise Speed: 22 Knots Kts. (25 MPH)

Max Speed: 27 Knots Kts. (31 MPH)

Our experienced yacht broker, Andrey Shestakov, will help you choose and buy a yacht that best suits your needs **REEL FUN SR — MEDITERRANEAN** from our catalogue. Presently, at Shestakov Yacht Sales Inc., we have a wide variety of yachts available on our sale's list. We also work in close contact with all the big yacht manufacturers from all over the world.

If you would like to buy a yacht **REEL FUN SR — MEDITERRANEAN** or would like help answering any questions concerning purchasing, selling or chartering a yacht, please call **+1(954)274-4435**

TABLE OF CONTENTS

TABLE OF CONTENTS	2
SPECIFICATIONS	3
Overview	3
Basic Information	6
Dimensions	6
Speed, Capacities and Weight	6
Accommodations	6
Hull and Deck Information	6
Engine Information	7
PHOTOS	8
CONTACTS	15
Contact details	15
Telephones	15
Office hours	15
Address	15

SPECIFICATIONS

Overview

Dimensions LOA: 54 ft 0 in Beam: 17 ft 0 in Bridge Clearance: 24 ft 0 in **Engines** Total Power: 1800 HP Engine 1: Engine Brand: Detroit MTU Year Built: 2006 Engine Model: 2001 Engine Type: Inboard Engine/Fuel Type: Diesel Location: Starboard Engine Hours: 4506 Drive Type: Direct Drive Engine Power: 900 HP Engine 2: Engine Brand: Detroit MTU Year Built: 2006 Engine Model: 2001 Engine Type: Inboard Engine/Fuel Type: Diesel Location: Port Engine Hours: 4505 Drive Type: Direct Drive Engine Power: 900 HP **Tanks** Fresh Water Tanks: 1 (365 Gallons) Fuel Tanks: 1 (1785 Gallons) **Accommodations** Number of single berths: 5 Number of twin berths: 1 Number of double berths: 1 Number of cabins: 3 Number of heads: 2 **Electronics** TV set Navigation center GPS Depthsounder Compass Plotter VCR Radio Radar Log-speedometer Autopilot VHF CD player **Inside Equipment** Air conditioning Heating Sea water pump Oven Battery charger Microwave oven Hot water Electric bilge pump Marine head **Electrical Equipment** Shore power inlet Generator Inverter

Anchor System

- Patriot EZ-13 24 volt electric drum winch
- 600' double braid rode
- 60' 3/8 galvanized chain
- 1-30KG claw anchor
- 1-20KG claw anchor
- 1-30KG plow anchor

General Specs

Galley

- UP and AFT
- Serving bar and stools
- Princess 3-burner stove
- Double SS sink
- Pioneer MOSFET 50 radio
- Reverse osmosis water purification
- Norcold refrigerator/freezer
- Samsung microwave
- Sonty Triniton 21" TV
- Newmar intercome/phone
- Automatic icemaker

Staterooms The Master Stateroom features a Queen berth with under mattress storage, lighted hanging locker, indirect lighting, and a fixed skylight hatch. Both head compartments feature:

Electric water saver heads; Vanities w/lavatory, mirror and cabinets; walk-in shower stalls with seats.

- STARBOARD MIDSHIP
- (2) Single berths
- Fixed skylight hatch
- Lighted hanging locker

- VEE BERTH CABIN
- (4) Single berths
- Skylight vent hatch

Equipment

- Down helm controls in cockpit
- Telephone/Cable TV shore connection
- Salt/freshwater washdown
- SS rod holders
- (8) Unit rocker launcher
- Cockpit shower
- Jenn-Air 110V BBQ grill in cockpit
- Oil change system
- Ritchie Powerdamp Plus 5" compass

- Intercom between flybridge/salon
- Washer/dryer
- Day/night solar vents
- Removable bridge cocktail table
- Freshwater shore connection
- 500 GPD watermaker
- Corian counters in galley and heads
- Jensen CD/weather receiver MCD 6115

Electronics

- Simrad AP20 autopilot
- Newmar phone-com
- Furuno FCV-292 color video sounder
- Furuno 1850D GPS color DGPS plotter
- SAT antenna rotator-receiver
- Ritchie compass
- Furuno GPS navigator DGPS GP36

- Furuno SS13 transceiver
- Telephone/cable TV shore connection

Safety Equipment

- (2) Emergency engine driven bilge pumps
- (3) 3700 GPH electric bilge pumps
- Danforth 60HHigh Tensile anchor w/50', 5/16" chain and 200' rode
- Plastimo (8) man liferaft

- Auto (heat activated) fire suppression system
- First Aid kit
- Life jackets
- Olin flare kit

Engine Room Area

- (2) Bronze seawater intake strainers with bronze ball valves
- (4) Engine room lights
- Engine room sound proofing
- SS propeller shafts

- (1) Manual bilge pump
- (3) Electric bilge pumps
- Zinc anode protection for shafts/props/rudders
- Racor fuel/water separators
- (2) Fiberglass water lift engine mufflers
- Fiberglass drip pans under engines
- Fiberglass battery boxes w/vent covers
- (2) Engine room blowers

Additional upgrades and information

Inverter 3 years since new

Drum wench installed April 2018 65' 3/8 chain 600 feet of double braid rode.

Main engines, Transmissions, both generators, Racor and secondary fuel filters, fuel filters for gen sets serviced October 2018.

2009 fiberglass cockpit cover installed.

2009 new radar arch installed.

2009 swim step railings installed.

2009 Genair BBG installier in cockpit.

2009 upgraded converter.

2009 custom fish prep and tackle center installed in cockpit.

2009 Rigid Flexboat inflatable added with cradle and davit.

Eskimo model 540 ice chipper installed 2017.

Basic Information

Category: Convertible

Sub Category: Convertible

Model Year: 2001

Year Built: 2001

Country: United States

Dimensions

LOA: 54' (16.46mm)

Speed, Capacities and Weight

Cruise Speed: 22 Knots Kts. (25 MPH)

Max Speed: 27 Knots Kts. (31 MPH)

Accommodations

Total Cabins: 3

Total Berths: 4

Sleeps: 6

Total Heads: 2

Hull and Deck Information

Hull Material: Fiberglass

Hull Configuration: Modified V-Hull

Hull Color: White

Engine Information

Engines: 2

Manufacturer: MTU

Engine Type: Inboard

Fuel Type: Diesel

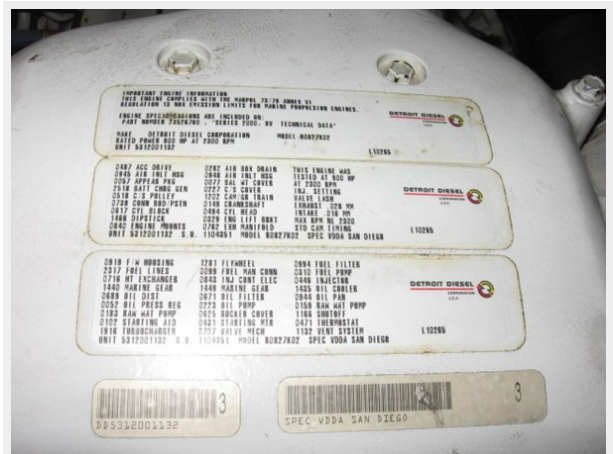
PHOTOS















CONTACTS

Andrey Shestakov, leading yacht broker of the sales department of Shestakov Yacht Sales Inc. Shestakov Yacht Sales Inc., the official representative of the Miami/Fort Lauderdale FL headquarters.

Contact details

Email: andrey@shestakovyachtsales.com

Web: shestakovyachtsales.com/en/

Telephones

USA: +1(954)274-4435

Office hours

Monday – Saturday: **9:00 - 21:00** EDT

Sunday: **closed**

Address



Harbour Towne Marina, 850 NE 3rd St,
STE 213, Dania, FL 33004