

TOBY — CERRI CANTIERI NAVALI



Builder: CERRI CANTIERI NAVALI

Year Built: 2009

Model: Motor Yacht

Price: **PRICE ON APPLICATION**

Location: Italy

LOA: 103' 5" (31.5mm)

Beam: 23.62

Max Draft: 5' 11" (1.8mm)

Cruise Speed: 30 Knots Kts. (35 MPH)

Max Speed: 40 Knots Kts. (46 MPH)

Our experienced yacht broker, Andrey Shestakov, will help you choose and buy a yacht that best suits your needs **TOBY — CERRI CANTIERI NAVALI** from **our catalogue**. Presently, at **Shestakov Yacht Sales Inc.**, we have a wide variety of yachts available on **our sale's list**. We also work in close contact with all the big **yacht manufacturers** from all over the world.

If you would like to buy a yacht **TOBY — CERRI CANTIERI NAVALI** or would like help answering any questions concerning purchasing, selling or chartering a yacht, please call **+1(954)274-4435**

TABLE OF CONTENTS

TABLE OF CONTENTS	2
SPECIFICATIONS	3
Overview	3
Basic Information	3
Dimensions	3
Speed, Capacities and Weight	4
Accommodations	4
Hull and Deck Information	4
Engine Information	4
PHOTOS	5
CONTACTS	9
Contact details	9
Telephones	9
Office hours	9
Address	9

SPECIFICATIONS

Overview

Successful Cerri shipyard model with modern design and fast hull (up to 40 knots).

Wide living areas either inside or on deck.

Toby offers a huge salon with warm décor, bright colour sofas, dining table and Fendi Home chairs; a full-width opening sunroof gives brightness to the area. Forward a lower salon with library and Tv screen.

Wide deck spaces with a very spacious top deck where the three seater driving chair block is a multifunction unit that turns in a large sundeck area; chaises longues complete the comfortable upper deck space.

Basic Information

Category: Motor Yacht

Model Year: 2009

Year Built: 2009

Country: Italy

Dimensions

LOA: 103' 5" (31.5mm)

Beam: 23.62

Max Draft: 5' 11" (1.8mm)

Speed, Capacities and Weight

Cruise Speed: 30 Knots Kts. (35 MPH) **Cruise Speed Range:** 450

Max Speed: 40 Knots Kts. (46 MPH) **Gross Tonnage:** 80 Pounds

Water Capacity: 7500 Gallons **Fuel Capacity:** 9985.7 Gal Gallons

Fuel Consumption: 198.13 Gal Gallons

Accommodations

Total Cabins: 5

Sleeps: 10

Crew Berths: 4

Hull and Deck Information

Hull Material: GRP

Deck Material: Teak

Hull Configuration: Planing

Exterior Designer: Cerri Cantieri Navali

Interior Designer: Cerri Cantieri Navali

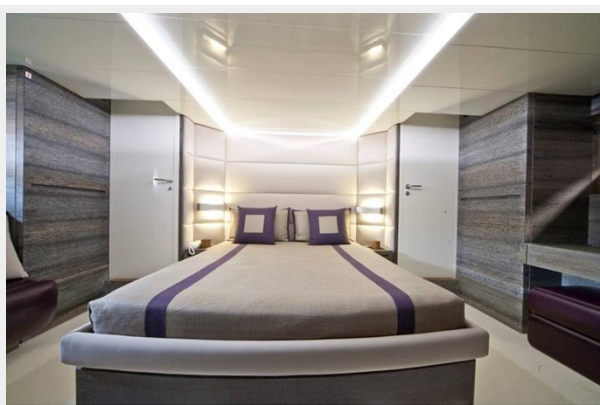
Engine Information

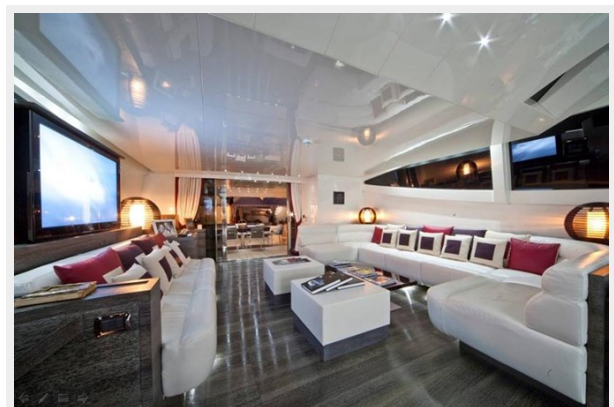
Engines: 2

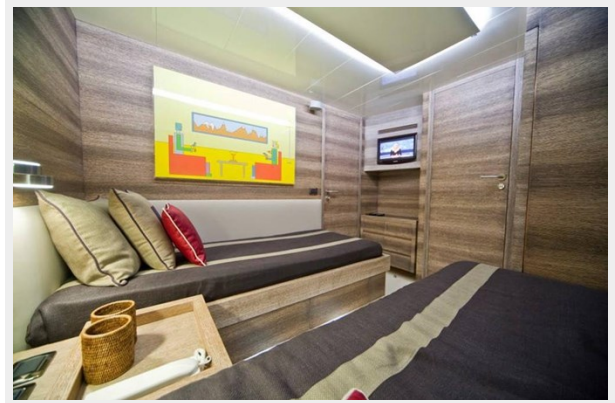
Manufacturer: MTU

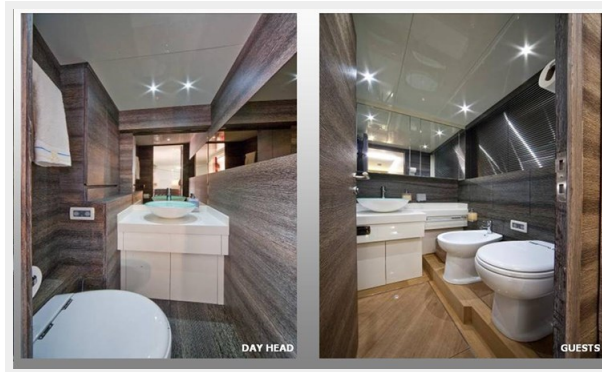
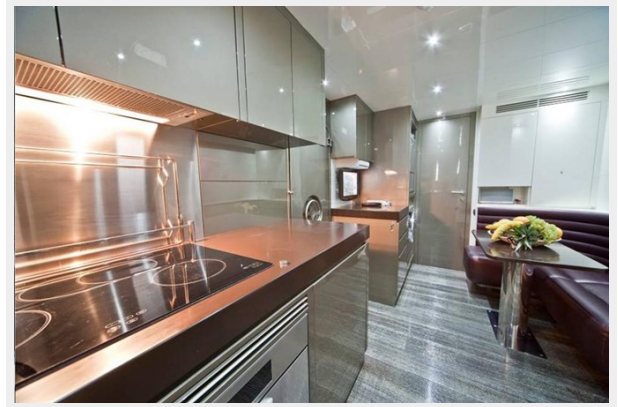
Engine Type: Inboard

PHOTOS









CONTACTS

Andrey Shestakov, leading yacht broker of the sales department of Shestakov Yacht Sales Inc. Shestakov Yacht Sales Inc., the official representative of the Miami/Fort Lauderdale FL headquarters.

Contact details

Email: **andrey@shestakovyachtsales.com**

Web: shestakovyachtsales.com/en/

Telephones

USA: **+1(954)274-4435**

Office hours

Monday – Saturday: **9:00 - 21:00** EDT

Sunday: **closed**

Address



Harbour Towne Marina, 850 NE 3rd St, STE 213, Dania, FL 33004