

GODIVA — DYNA CRAFT



Builder: DYNA CRAFT

Year Built: 2014

Model: Motor Yacht

Price: PRICE ON APPLICATION

Location: United States

LOA: 60' (18.29mm)

Beam: 16.33

Max Draft: 4' 6" (1.37mm)

Our experienced yacht broker, Andrey Shestakov, will help you choose and buy a yacht that best suits your needs **GODIVA — DYNA CRAFT** from **our catalogue**. Presently, at **Shestakov Yacht Sales Inc.**, we have a wide variety of yachts available on **our sale's list**. We also work in close contact with all the big **yacht manufacturers** from all over the world.

If you would like to buy a yacht **GODIVA — DYNA CRAFT** or would like help answering any questions concerning purchasing, selling or chartering a yacht, please call **+1(954)274-4435**

TABLE OF CONTENTS

TABLE OF CONTENTS	2
SPECIFICATIONS	4
Basic Information	4
Dimensions	4
Speed, Capacities and Weight	4
Accommodations	4
Hull and Deck Information	4
Engine Information	4
PHOTOS	5
Full Galley and Salon View	5
Full Galley and Salon View	5
Galley	5
Galley	5
Salon	5
Salon Seating - Table open	5
Salon Seating - Table Closed	6
Salon Seating with pull out chairs	6
High Low TV	6
Helm Chairs	6
Lower Helm	6
Lower Helm	6
Master Stateroom	6
Master Stateroom	6
Master Stateroom Seating	7
Master Stateroom	7
Master Head	7
Master Head	7
VIP Stateroom	7

VIP Stateroom	7
Twin Stateroom	8
Guest Head	8
Guest Head	8
Hallway	8
Full Size Crew	8
Full Size Crew	8
Full size Crew	9
Full Size Crew	9
Crew Head	9
Crew Head	9
Engine Room	9
Port Engine	9
Starboard Engine	9
Generator	9
Chillers	10
Watermaker	10
Engine Room	10
Engine Room	10
Engine Room	10
Engine Room	10
Full Stand-up Engine Room	10
CONTACTS	11
Contact details	11
Telephones	11
Office hours	11
Address	11

SPECIFICATIONS

Basic Information

Category: Motor Yacht

Sub Category: Flybridge

Model Year: 2015

Year Built: 2014

Country: United States

Dimensions

LOA: 60' (18.29mm)

Beam: 16.33

Max Draft: 4' 6" (1.37mm)

Speed, Capacities and Weight

Water Capacity: 180 Gallons

Fuel Capacity: 700 Gal Gallons

Accommodations

Total Cabins: 3

Total Heads: 3

Crew Heads: 1

Hull and Deck Information

Hull Material: Fiberglass

Engine Information

Engines: 2

Manufacturer: Cummins

Engine Type: Inboard

Fuel Type: Diesel

PHOTOS

Full Galley and Salon View



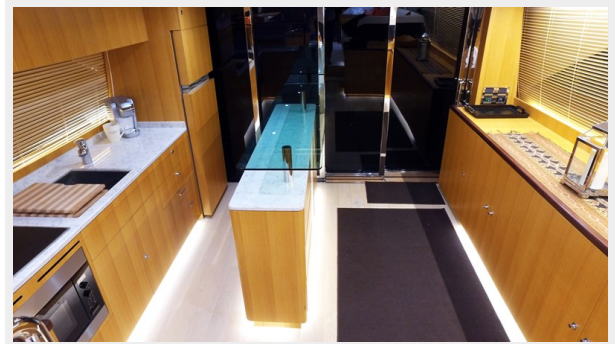
Full Galley and Salon View



Galley



Galley



Salon



Salon Seating - Table open



Salon Seating - Table Closed



Salon Seating with pull out chairs



High Low TV



Helm Chairs



Lower Helm



Lower Helm



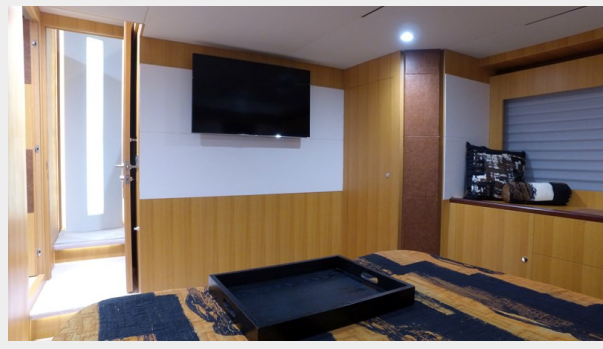
Master Stateroom



Master Stateroom



Master Stateroom



Master Stateroom Seating



Master Head



Master Head



VIP Stateroom



VIP Stateroom



Twin Stateroom



Guest Head



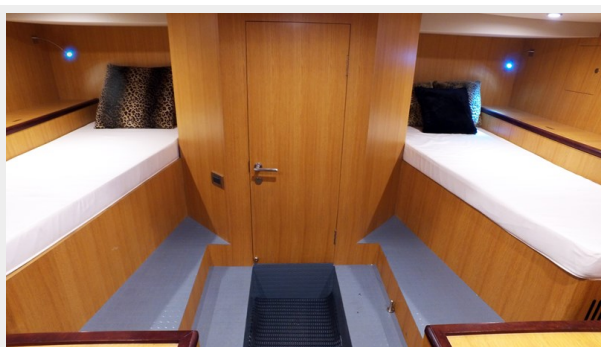
Guest Head



Hallway



Full Size Crew



Full Size Crew



Full size Crew



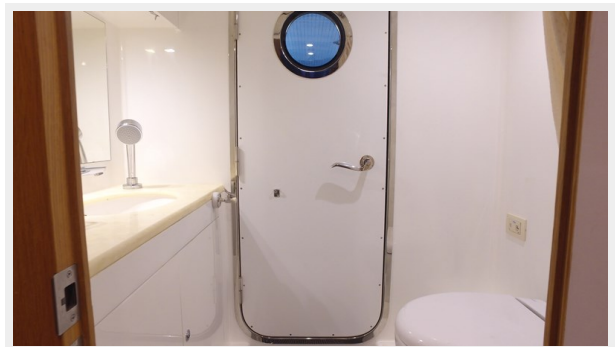
Full Size Crew



Crew Head



Crew Head



Engine Room



Port Engine



Starboard Engine



Generator



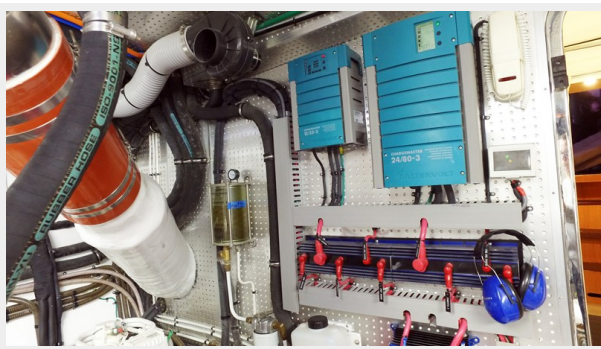
Chillers



Watermaker



Engine Room



Engine Room



Engine Room



Engine Room



Full Stand-up Engine Room



CONTACTS

Andrey Shestakov, leading yacht broker of the sales department of Shestakov Yacht Sales Inc. Shestakov Yacht Sales Inc., the official representative of the Miami/Fort Lauderdale FL headquarters.

Contact details

Email: **andrey@shestakovyachtsales.com**

Web: shestakovyachtsales.com/en/

Telephones

USA: **+1(954)274-4435**

Office hours

Monday – Saturday: **9:00 - 21:00** EDT

Sunday: **closed**

Address



Harbour Towne Marina, 850 NE 3rd St, STE 213, Dania, FL 33004