

SUNSEEKER 40M — SUNSEEKER



Builder: SUNSEEKER

Year Built: 2010

Model: Motor Yacht

Price: PRICE ON APPLICATION

LOA: 131' (39.93m)

Beam: 26.25

Max Draft: 7' 10" (2.39m)

Cruise Speed: 23 Knots Kts. (26 MPH)

Max Speed: 27 Knots Kts. (31 MPH)

Our experienced yacht broker, Andrey Shestakov, will help you choose and buy a yacht that best suits your needs Sunseeker 40m — SUNSEEKER from our catalogue. Presently, at Shestakov Yacht Sales Inc., we have a wide variety of yachts available on our sale's list. We also work in close contact with all the big yacht manufacturers from all over the world.

If you would like to buy a yacht Sunseeker 40m — SUNSEEKER or would like help answering any questions concerning purchasing, selling or chartering a yacht, please call +1(954)274-4435

TABLE OF CONTENTS

| | |
|------------------------------|----|
| TABLE OF CONTENTS | 2 |
| SPECIFICATIONS | 4 |
| Overview | 4 |
| Basic Information | 4 |
| Dimensions | 4 |
| Speed, Capacities and Weight | 4 |
| Accommodations | 5 |
| Hull and Deck Information | 5 |
| Engine Information | 5 |
| PHOTOS | 6 |
| Main Deck Aft | 6 |
| Main Deck Saloon | 6 |
| Master Suite | 7 |
| Bridge Deck Aft | 8 |
| Walkway Port Side | 9 |
| Walkway Stbd Side | 9 |
| Foredeck | 9 |
| Bridge Deck Lounge | 10 |
| Bridge Deck Day Head | 10 |
| Upper Deck | 10 |
| Upper Deck | 11 |
| Main stairs | 11 |
| Lower Deck Hallway | 11 |
| VIP Suite Stbd | 12 |
| VIP Suite Port | 12 |
| Guest Suite | 13 |
| Guest Suite | 13 |
| Guest Suite | 14 |

| | |
|------------------|----|
| Galley | 14 |
| Bridge | 14 |
| Main Engine Port | 15 |
| Main Engine Stbd | 15 |
| Generator 1 | 15 |
| Generator 2 | 15 |
| CONTACTS | 17 |
| Contact details | 17 |
| Telephones | 17 |
| Office hours | 17 |
| Address | 17 |

SPECIFICATIONS

Overview

2x Kohler Generators 80EFOZD, 80kW, 230/400v, 50hz

Dometic Marine Air System

TRAC Bow & Stern Thruster

Trac Fin Stabilizers

Basic Information

Category: Motor Yacht

Sub Category: Superyacht

Model Year: 2010

Year Built: 2010

Dimensions

LOA: 131' (39.93mm)

Beam: 26.25

Max Draft: 7' 10" (2.39mm)

Speed, Capacities and Weight

Cruise Speed: 23 Knots Kts. (26 MPH)

Max Speed: 27 Knots Kts. (31 MPH)

Gross Tonnage: 331 Pounds

Water Capacity: 5000 Gallons

Holding Tank: 388.33 Gal Gallons

Fuel Capacity: 8268.59 Gal Gallons

Accommodations

Total Cabins: 7

Sleeps: 14

Total Heads: 8

Crew Cabin: 7

Crew Heads: 4

Hull and Deck Information

Hull Material: GRP

Deck Material: Teak over Fiberglass

Hull Configuration: Semi-Displacement

Hull Color: White

Engine Information

Engines: 2

Manufacturer: MTU

Engine Type: Inboard

Fuel Type: Diesel

PHOTOS

Main Deck Aft

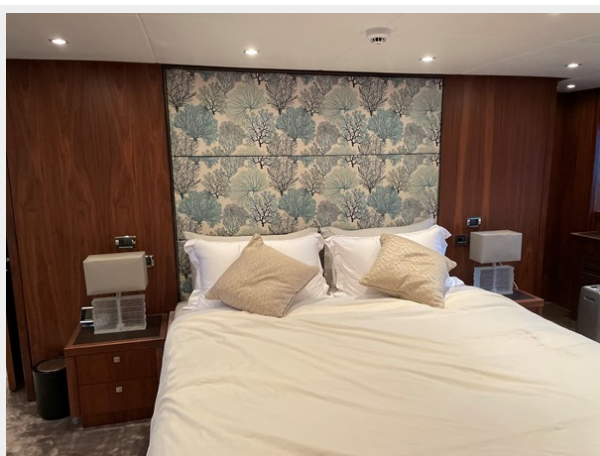


Main Deck Saloon



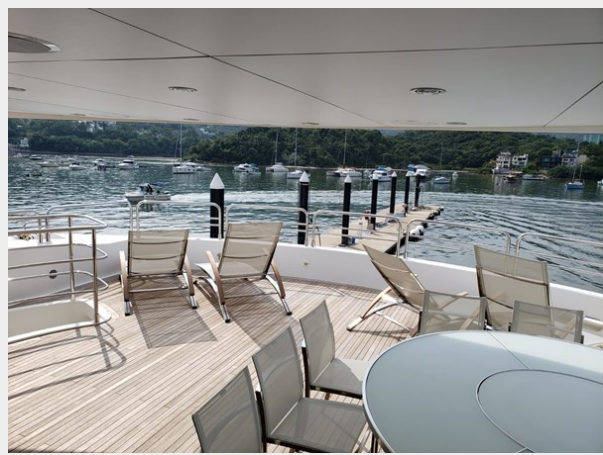


Master Suite





Bridge Deck Aft



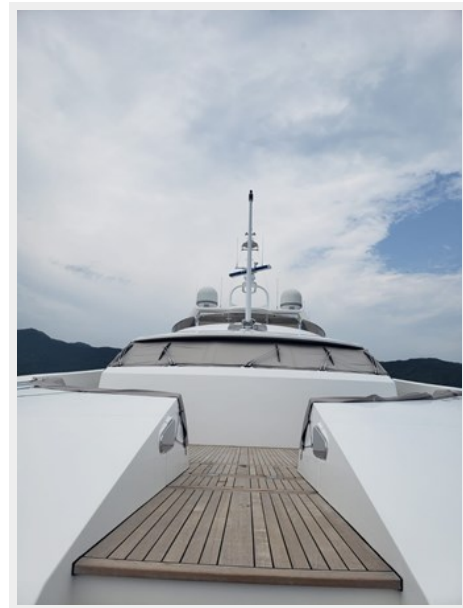
Walkway Port Side



Walkway Stbd Side



Foredeck



Bridge Deck Lounge



Bridge Deck Day Head



Upper Deck



Upper Deck



Main stairs



Lower Deck Hallway



VIP Suite Stbd



VIP Suite Port



Guest Suite



Guest Suite



Guest Suite



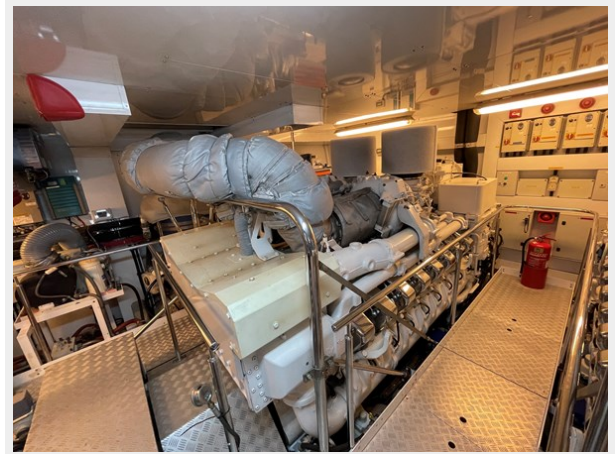
Galley



Bridge



Main Engine Port



Main Engine Stbd

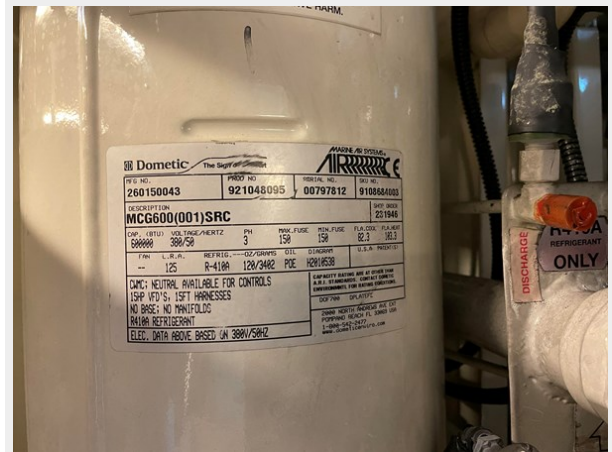
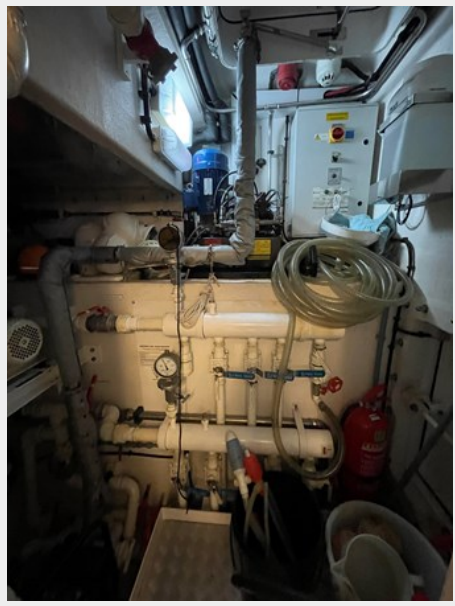


Generator 1



Generator 2





CONTACTS

Andrey Shestakov, leading yacht broker of the sales department of Shestakov Yacht Sales Inc. Shestakov Yacht Sales Inc., the official representative of the Miami/Fort Lauderdale FL headquarters.

Contact details

Email: andrey@shestakovyachtsales.com

Web: shestakovyachtsales.com/en/

Telephones

USA: +1(954)274-4435

Office hours

Monday – Saturday: **9:00 - 21:00** EDT

Sunday: **closed**

Address



Harbour Towne Marina, 850 NE 3rd St,
STE 213, Dania, FL 33004