

REEFO — MOCHI CRAFT



Builder: MOCHI CRAFT

Year Built: 2010

Model: Motor Yacht

Price: PRICE ON APPLICATION

Location: Italy

LOA: 64' 2" (19.55m)

Beam: 20.11

Max Draft: 5' 9" (1.75m)

Cruise Speed: 27 Knots Kts. (31 MPH)

Our experienced yacht broker, Andrey Shestakov, will help you choose and buy a yacht that best suits your needs **REEFO — MOCHI CRAFT** from our catalogue. Presently, at Shestakov Yacht Sales Inc., we have a wide variety of yachts available on our sale's list. We also work in close contact with all the big yacht manufacturers from all over the world.

If you would like to buy a yacht **REEFO — MOCHI CRAFT** or would like help answering any questions concerning purchasing, selling or chartering a yacht, please call **+1(954)274-4435**

TABLE OF CONTENTS

TABLE OF CONTENTS	2
SPECIFICATIONS	4
Overview	4
Basic Information	4
Dimensions	4
Speed, Capacities and Weight	4
Accommodations	4
Hull and Deck Information	5
Engine Information	5
PHOTOS	6
30122018-30122018-L1000440 (FILEminimizer)	6
DSC_5417bis (FILEminimizer)	6
DSC_5398 (FILEminimizer)	6
30122018-30122018-L1000444 (FILEminimizer)	6
30122018-30122018-L1000539 (FILEminimizer)	7
30122018-30122018-L1000533 (FILEminimizer)	7
30122018-30122018-L1000537 (FILEminimizer)	7
DSC_5387 (FILEminimizer)	7
30122018-30122018-L1000465 (FILEminimizer)	8
DSC_5381 (FILEminimizer)	8
30122018-30122018-L1000478 (FILEminimizer)	8
DSC_5365 (FILEminimizer)	8
30122018-30122018-L1000438 (FILEminimizer)	8
DSC_5380 (FILEminimizer)	8
30122018-30122018-L1000405 (FILEminimizer)	9
DSC_5372 (FILEminimizer)	9
30122018-30122018-L1000404 (FILEminimizer)	9
DSC_5360 (FILEminimizer)	9

30122018-30122018-L1000387 (FILEminimizer)	9
30122018-30122018-L1000384 (FILEminimizer)	9
30122018-30122018-L1000415 (FILEminimizer)	10
30122018-30122018-L1000416 (FILEminimizer)	10
30122018-30122018-L1000410 (FILEminimizer)	10
30122018-30122018-L1000425 (FILEminimizer)	10
30122018-30122018-L1000421 (FILEminimizer)	11
30122018-30122018-L1000555 (FILEminimizer)	11
30122018-30122018-L1000549 (FILEminimizer)	11
CONTACTS	12
Contact details	12
Telephones	12
Office hours	12
Address	12

SPECIFICATIONS

Overview

Mochi Dolphin 64 in turn key condition, with "deep blue" hull colour and full teak deck and flybridge. In 2018 shaft bearings and seals replacement, shafts alignment, hull and superstructure polishing, desalination units membranes replacement.

Basic Information

Category: Motor Yacht

Sub Category: Flybridge

Model Year: 2010

Year Built: 2010

Country: Italy

Dimensions

LOA: 64' 2" (19.55mm)

Beam: 20.11

Max Draft: 5' 9" (1.75mm)

Speed, Capacities and Weight

Cruise Speed: 27 Knots Kts. (31 MPH)

Cruise Speed Range: 32

Gross Tonnage: 42 Pounds

Water Capacity: 990 Gallons

Fuel Capacity: 951.02 Gal Gallons

Fuel Consumption: 89.82 Gal Gallons

Accommodations

Total Cabins: 3

Sleeps: 6

Hull and Deck Information

Hull Material: Fiberglass

Hull Color: BLUE

Engine Information

Engines: 2

Manufacturer: MAN

Engine Type: Inboard

Fuel Type: Diesel

PHOTOS

DSC_5417bis (FILEminimizer)



30122018-30122018-L1000440
(FILEminimizer)



DSC_5398 (FILEminimizer)



30122018-30122018-L1000444
(FILEminimizer)



**30122018-30122018-L1000539
(FILEminimizer)**



**30122018-30122018-L1000533
(FILEminimizer)**



**30122018-30122018-L1000537
(FILEminimizer)**



DSC_5387 (FILEminimizer)



**30122018-30122018-L1000465
(FILEminimizer)**

DSC_5381 (FILEminimizer)



**30122018-30122018-L1000478
(FILEminimizer)**

DSC_5365 (FILEminimizer)



DSC_5380 (FILEminimizer)

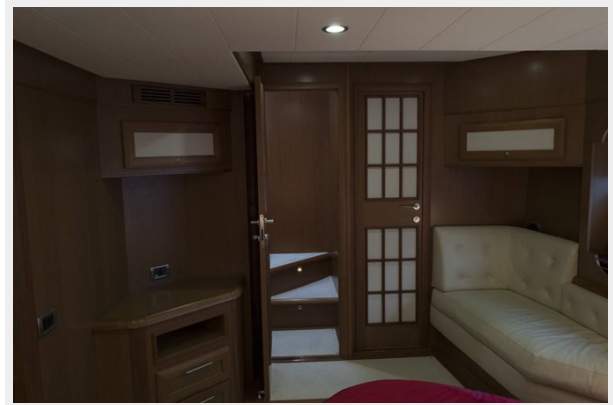
**30122018-30122018-L1000438
(FILEminimizer)**



DSC_5372 (FILEminimizer)



**30122018-30122018-L1000405
(FILEminimizer)**



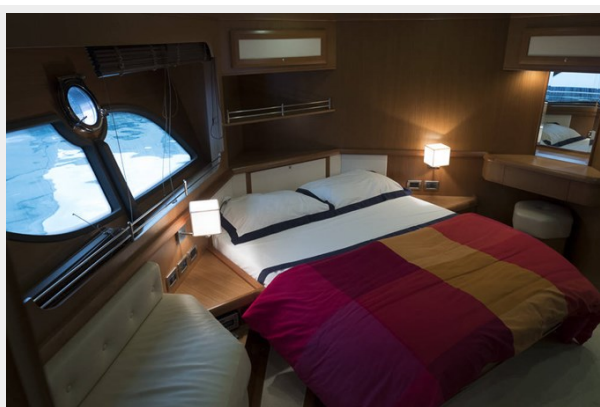
DSC_5360 (FILEminimizer)



**30122018-30122018-L1000404
(FILEminimizer)**



**30122018-30122018-L1000387
(FILEminimizer)**



**30122018-30122018-L1000384
(FILEminimizer)**



30122018-30122018-L1000415
(FILEminimizer)



30122018-30122018-L1000416
(FILEminimizer)



30122018-30122018-L1000410
(FILEminimizer)



30122018-30122018-L1000425
(FILEminimizer)



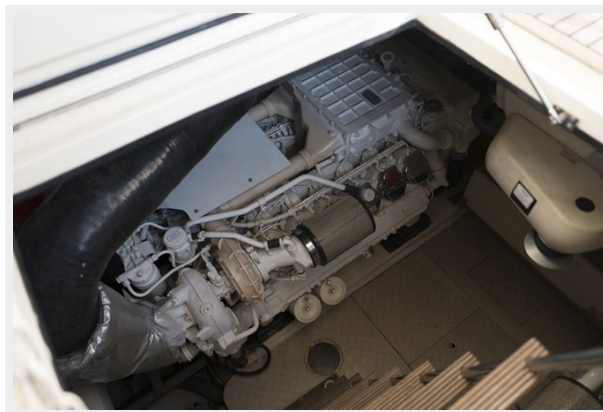
**30122018-30122018-L1000421
(FILEminimizer)**



**30122018-30122018-L1000555
(FILEminimizer)**



30122018-30122018-L1000549 (FILEminimizer)



CONTACTS

Andrey Shestakov, leading yacht broker of the sales department of Shestakov Yacht Sales Inc. Shestakov Yacht Sales Inc., the official representative of the Miami/Fort Lauderdale FL headquarters.

Contact details

Email: andrey@shestakovyachtsales.com

Web: shestakovyachtsales.com/en/

Telephones

USA: +1(954)274-4435

Office hours

Monday – Saturday: **9:00 - 21:00** EDT

Sunday: **closed**

Address



Harbour Towne Marina, 850 NE 3rd St,
STE 213, Dania, FL 33004