

## 39 MOTOR YACHT — SILVERTON



**Builder:** SILVERTON

**Year Built:** 2006

**Model:** Motor Yacht

**Price:** PRICE ON APPLICATION

**Location:** United States

**LOA:** 39' (11.89mm)

**Beam:** 14

**Max Draft:** 3' 11" (1.19mm)

Our experienced yacht broker, Andrey Shestakov, will help you choose and buy a yacht that best suits your needs 39 Motor Yacht — SILVERTON from our catalogue. Presently, at Shestakov Yacht Sales Inc., we have a wide variety of yachts available on our sale's list. We also work in close contact with all the big yacht manufacturers from all over the world.

If you would like to buy a yacht 39 Motor Yacht — SILVERTON or would like help answering any questions concerning purchasing, selling or chartering a yacht, please call +1(954)274-4435

# TABLE OF CONTENTS

---

TABLE OF CONTENTS	2
SPECIFICATIONS	5
Overview	5
Basic Information	5
Dimensions	5
Speed, Capacities and Weight	5
Accommodations	6
Hull and Deck Information	6
Engine Information	6
PHOTOS	7
1	7
2	7
19	7
3	7
20	8
5	8
21	8
25	8
27	8
23	8
35	9
8	9
41	9
33	9
45	9
29	9
31	10
17	10

---

47	10
37	10
15	10
43	10
49	11
12	11
39	11
53	11
51	11
10	11
26	12
4	12
9	12
18	12
16	12
11	12
40	13
42	13
6	13
54	13
22	13
30	13
48	14
38	14
14	14
50	14
28	14
34	14
44	15

---

---

24	15
52	15
32	15
36	15
46	15
CONTACTS	16
Contact details	16
Telephones	16
Office hours	16
Address	16

---

# SPECIFICATIONS

---

## Overview

---

This 2006 39 Silverton MY is in very good condition! A very popular model with its popular "side-walk" feature for easy access to the bow and a very smart and spacious cabin interior that shows bigger than her model designator. The interior wood work makes for a warm inviting environment. Don't miss out on this very popular and much desired vessel. Contact us today!

June 2019-Exterior and Interior detail, Oil change, New batteries, Bottom paint, Zincs, Macerator valve replacements, Inlet AC water valve replacements.

## Basic Information

---

**Category:** Motor Yacht

**Model Year:** 2006

**Year Built:** 2006

**Country:** United States

## Dimensions

---

**LOA:** 39' (11.89mm)

**Beam:** 14

**Max Draft:** 3' 11" (1.19mm)

## Speed, Capacities and Weight

---

**Water Capacity:** 100 Gallons

**Holding Tank:** 60 Gal Gallons

**Fuel Capacity:** 334 Gal Gallons

---

## Accommodations

---

**Total Cabins:** 2

**Total Berths:** 6

**Total Heads:** 2

---

## Hull and Deck Information

---

**Hull Material:** Fiberglass

---

## Engine Information

---

**Engines:** 2

**Manufacturer:** Crusader

**Engine Type:** Inboard

**Fuel Type:** Gas

# PHOTOS

1



2



19



3



20



5



21



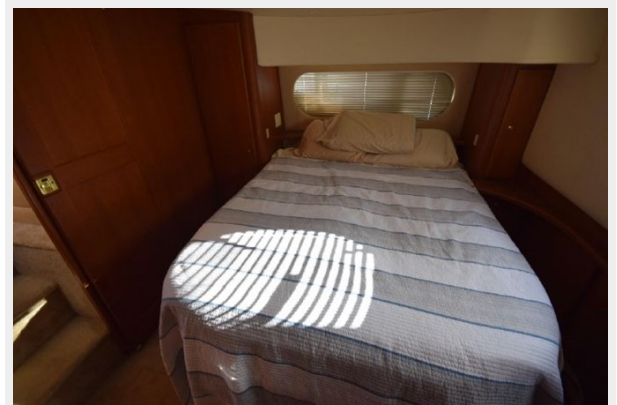
25



27



23





35



8



41



33



45



29



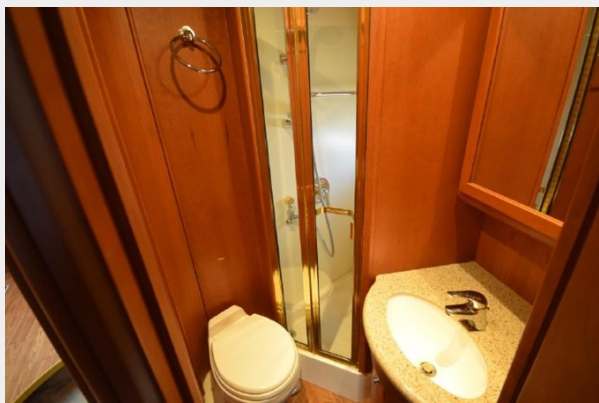
31



17



47



37



15



43



49



12



39



53



51



10



26



4



9



18



16



11



40



42



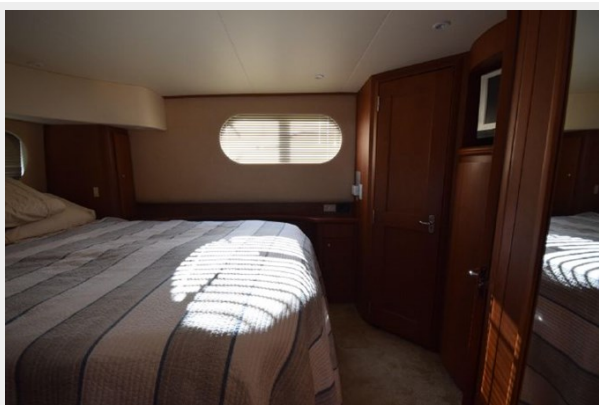
6



54



22



30



48



38



14



50



28



34



44



24



52



32



36



46



# CONTACTS

---

Andrey Shestakov, leading yacht broker of the sales department of Shestakov Yacht Sales Inc. Shestakov Yacht Sales Inc., the official representative of the Miami/Fort Lauderdale FL headquarters.

## Contact details

---

Email: [andrey@shestakovyachtsales.com](mailto:andrey@shestakovyachtsales.com)

Web: [shestakovyachtsales.com/en/](http://shestakovyachtsales.com/en/)

## Telephones

---

USA: +1(954)274-4435

## Office hours

---

Monday – Saturday: **9:00 - 21:00** EDT

Sunday: **closed**

## Address

---



Harbour Towne Marina, 850 NE 3rd St,  
STE 213, Dania, FL 33004