

RAHITI — RAMPAGE



Builder: RAMPAGE

Year Built: 2007

Model: cruiser

Price: PRICE ON APPLICATION

Location: United States

LOA: 38' (11.58mm)

Beam: 13.75

Max Draft: 3' 6" (1.07mm)

Cruise Speed: 24.33 Knots Kts. (28 MPH)

Max Speed: 27.81 Knots Kts. (32 MPH)

Our experienced yacht broker, Andrey Shestakov, will help you choose and buy a yacht that best suits your needs **Rahiti — RAMPAGE** from our catalogue. Presently, at Shestakov Yacht Sales Inc., we have a wide variety of yachts available on our sale's list. We also work in close contact with all the big yacht manufacturers from all over the world.

If you would like to buy a yacht **Rahiti — RAMPAGE** or would like help answering any questions concerning purchasing, selling or chartering a yacht, please call **+1(954)274-4435**

TABLE OF CONTENTS

TABLE OF CONTENTS	2
SPECIFICATIONS	5
Overview	5
Basic Information	5
Dimensions	5
Speed, Capacities and Weight	5
Accommodations	5
Hull and Deck Information	6
Engine Information	6
PHOTOS	7
2	7
4	7
15	7
11	7
17	8
14	8
16	8
45	8
12	9
21	9
28	9
20	9
51	10
49	10
6	10
29	10
23	11
39	11

27	11
57	11
31	12
35	12
8	12
47	12
18	13
19	13
55	13
10	13
37	14
33	14
25	14
43	14
53	15
41	15
32	15
13	15
40	16
56	16
24	16
54	16
22	17
46	17
34	17
38	17
44	18
50	18
5	18

30	18
7	19
36	19
52	19
26	19
9	20
42	20
48	20
3	20
CONTACTS	21
Contact details	21
Telephones	21
Office hours	21
Address	21

SPECIFICATIONS

Overview

This is a prime example of a very well maintained 38 Express with full Tower, RUPP Outriggers, massive cockpit, New Canvas and Upholstery, Solid Wood interior, etc. etc. Fully rigged for Fishing, this is it! Needs nothing but your crew and toothbrush !

Basic Information

Category: cruiser

Sub Category: Express

Model Year: 2007

Year Built: 2007

Country: United States

Dimensions

LOA: 38' (11.58mm)

LOD: 38' (11.58mm)

Beam: 13.75

Max Draft: 3' 6" (1.07mm)

Speed, Capacities and Weight

Cruise Speed: 24.33 Knots Kts. (28 MPH)

Max Speed: 27.81 Knots Kts. (32 MPH)

Water Capacity: 60 Gallons

Holding Tank: 39 Gal Gallons

Fuel Capacity: 512 Gal Gallons

Accommodations

Total Cabins: 1

Total Berths: 4

Total Heads: 1

Hull and Deck Information

Hull Material: Fiberglass

Engine Information

Engines: 2

Manufacturer: Cummins

Engine Type: Inboard

Fuel Type: Diesel

PHOTOS

2



4



15



11



17



14



16



45



12



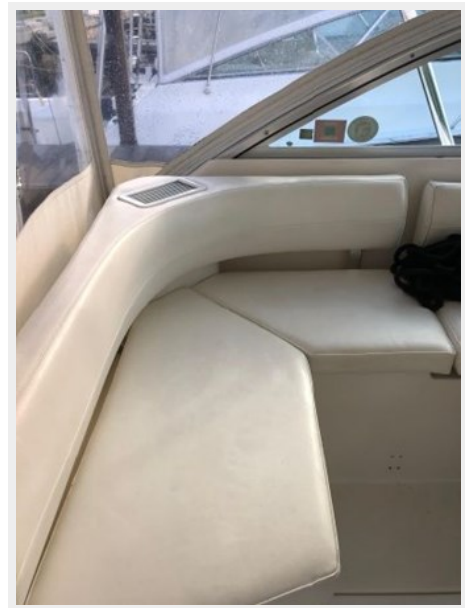
21



28



20



51



49



6



29



23



39



27



57



31



35



8



47



18



19



55



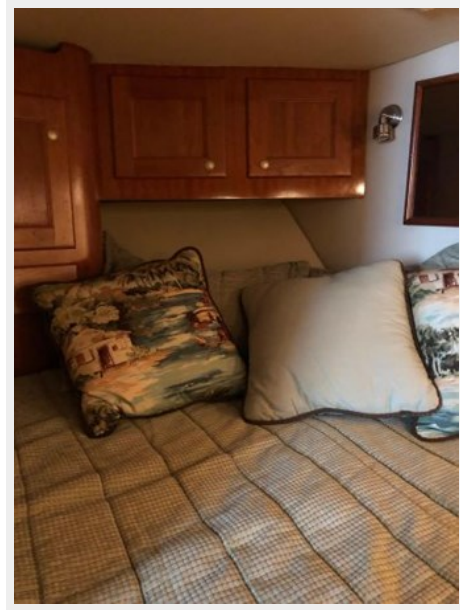
10



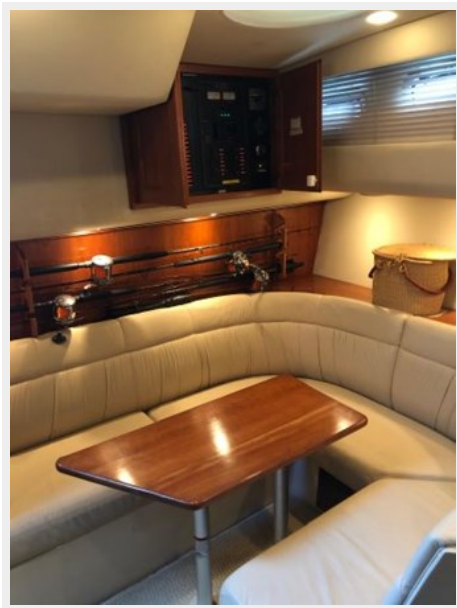
37



33



25



43



53



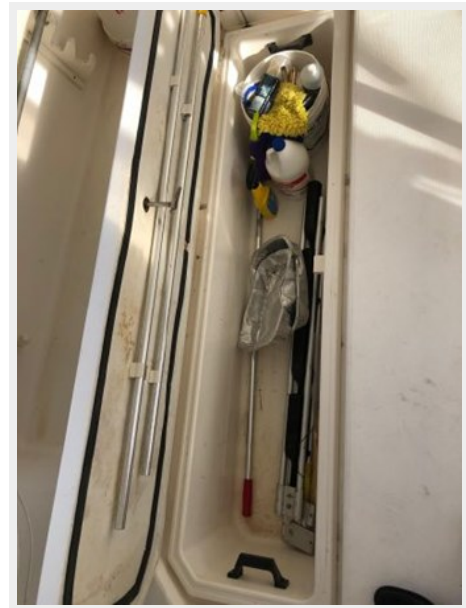
41



32



13



40



56



24



54



22



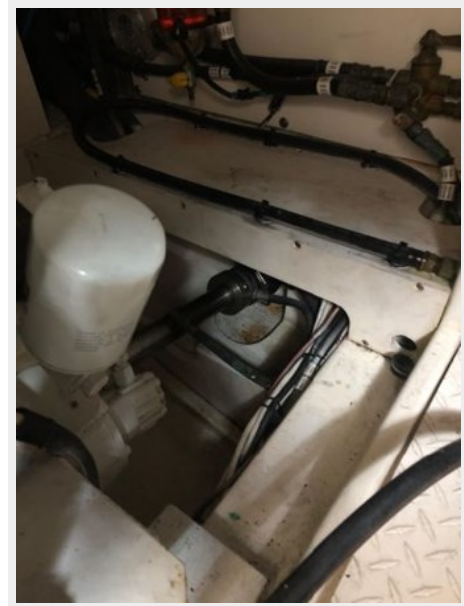
46



34



38



44



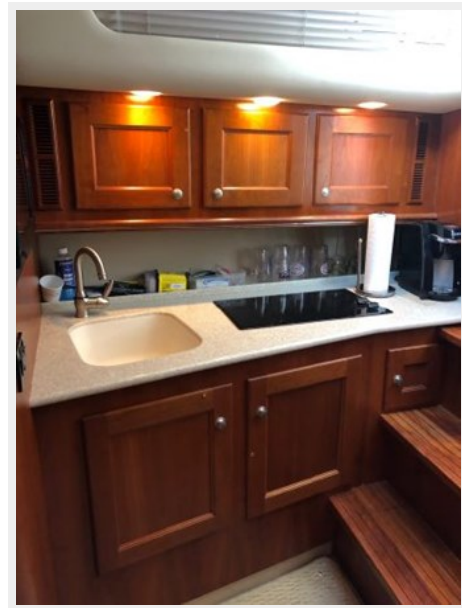
50



5



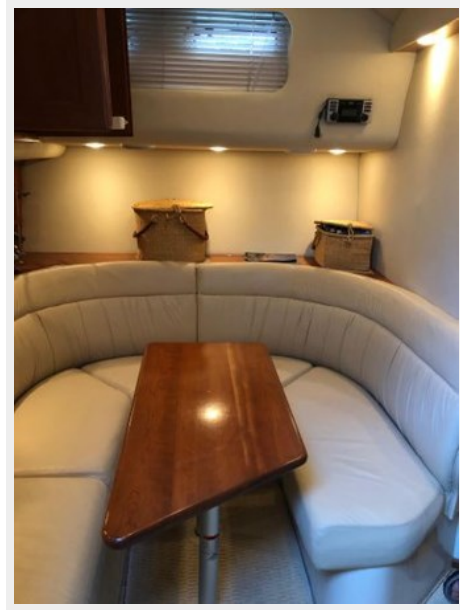
30



7



36



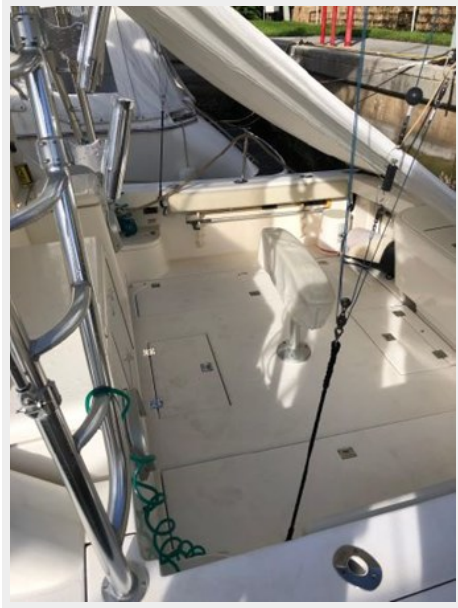
52



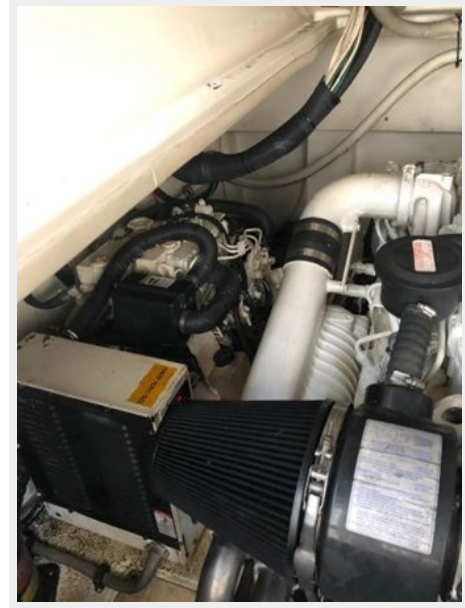
26



9



42



48



3



CONTACTS

Andrey Shestakov, leading yacht broker of the sales department of Shestakov Yacht Sales Inc. Shestakov Yacht Sales Inc., the official representative of the Miami/Fort Lauderdale FL headquarters.

Contact details

Email: **andrey@shestakovyachtsales.com**

Web: shestakovyachtsales.com/en/

Telephones

USA: **+1(954)274-4435**

Office hours

Monday – Saturday: **9:00 - 21:00 EDT**

Sunday: **closed**

Address



Harbour Towne Marina, 850 NE 3rd St,
STE 213, Dania, FL 33004