

WAITING — MAORI



Builder: MAORI

Year Built: 2008

Model: Motor Yacht

Price: PRICE ON APPLICATION

Location: Italy

LOA: 47' 7" (14.5mm)

Beam: 13.45

Max Draft: 3' (0.9mm)

Cruise Speed: 34 Knots Kts. (39 MPH)

Max Speed: 43 Knots Kts. (49 MPH)

Our experienced yacht broker, Andrey Shestakov, will help you choose and buy a yacht that best suits your needs **WAITING — MAORI** from our catalogue. Presently, at Shestakov Yacht Sales Inc., we have a wide variety of yachts available on our sale's list. We also work in close contact with all the big yacht manufacturers from all over the world.

If you would like to buy a yacht **WAITING — MAORI** or would like help answering any questions concerning purchasing, selling or chartering a yacht, please call **+1(954)274-4435**

TABLE OF CONTENTS

TABLE OF CONTENTS	2
SPECIFICATIONS	4
Overview	4
Basic Information	4
Dimensions	4
Speed, Capacities and Weight	5
Accommodations	5
Hull and Deck Information	5
Engine Information	5
PHOTOS	6
IMG-20210426-WA0082	6
IMG-20210426-WA0080	6
IMG-20210426-WA0070	6
IMG-20210426-WA0071	6
IMG-20210426-WA0072	7
IMG-20210426-WA0073	7
plancia comandi	7
plancia comandi2	7
IMG-20210426-WA0074	7
IMG-20210426-WA0074	7
IMG-20210426-WA0078	8
IMG-20210426-WA0077	8
motore	8
motore	8
IMG-20180309-WA0014	8
CONTACTS	9
Contact details	9
Telephones	9

Office hours 9

Address 9

SPECIFICATIONS

Overview

THE MOST BEAUTIFUL MAORI 50 HT ON THE MARKET: HULL 2008 / ENGINES, DRIVES, SYSTEM & EQUIPMENT 2018 **in 2017:** new Side Power bow thruster with its own battery, full emergency equipment replacement, new anchor chain, new intruder flaps by Volvo Penta; **in 2018:** new Mercruiser bi turbo diesel 370hp with new drives Bravo III Racing, plus new electronic throttles and relative instruments; new 4kw Lombardini generator (Kohler engine); electric system fully renewed by fireproofs cables (selector switches, thermal-magnetics 12v and 220v line with inverter); new outside tapestry (cushions, canvas and bow & aft bimini); full led lights, new 1000w Fusion hi fi system and new fresh water pump and carbon ELKA shower with fast-coupling terminal; windlass & hydraulic unit and pumps overhauling; new sea cocks, new bilge pumps; bathroom rebuilding with new appliances and enlargement; T-Top conversion in Hard Top built by infusion moulds in epox bicomponent with anti-UV methacrylate; new side windows achievement and new inside and outside cabinets for minibar, stove, sink, stereo; **in 2020:** hull and superstructure repainting, fresh water tank replacement, outside tapestri coverings replacement, new bow bimini with 4 carbon poles, balck water system overhauling, service batteries replacement and new aft rubbing, new TV SAT system with cockpit foldaway tv.

Basic Information

Category: Motor Yacht

Sub Category: Motor Yacht

Model Year: 2009

Year Built: 2008

Country: Italy

Dimensions

LOA: 47' 7" (14.5mm)

Beam: 13.45

Max Draft: 3' (0.9mm)

Speed, Capacities and Weight

Cruise Speed: 34 Knots Kts. (39 MPH)

Max Speed: 43 Knots Kts. (49 MPH)

Gross Tonnage: 10.5 Pounds

Water Capacity: 290 Gallons

Fuel Capacity: 264.17 Gal Gallons

Fuel Consumption: 26.42 Gal Gallons

Accommodations

Total Cabins: 1

Sleeps: 2

Hull and Deck Information

Hull Material: Fiberglass

Deck Material: Teak

Hull Color: DARK GREY

Engine Information

Engines: 2

Manufacturer: Mercury

Engine Type: I/O

Fuel Type: Diesel

PHOTOS

IMG-20210426-WA0082



IMG-20210426-WA0080



IMG-20210426-WA0070



IMG-20210426-WA0071



IMG-20210426-WA0072



IMG-20210426-WA0073



plancia comandi2



plancia comandi



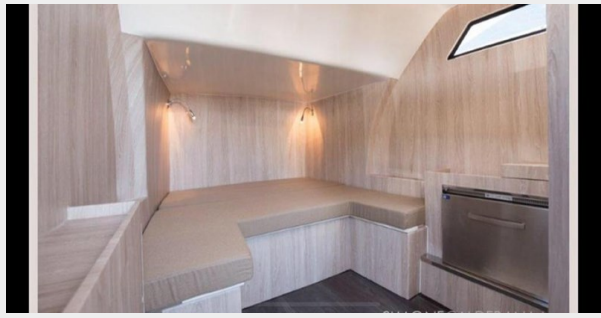
IMG-20210426-WA0074



IMG-20210426-WA0074



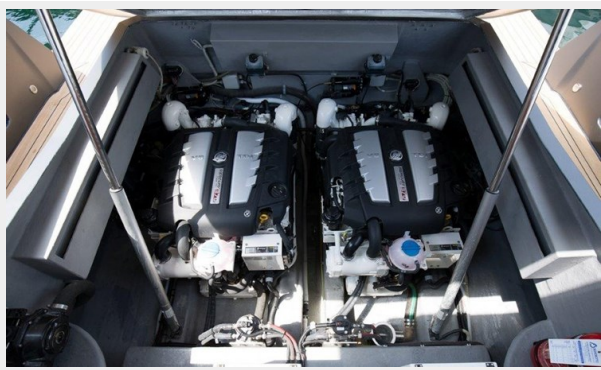
IMG-20210426-WA0078



IMG-20210426-WA0077



motore



motore



IMG-20180309-WA0014



CONTACTS

Andrey Shestakov, leading yacht broker of the sales department of Shestakov Yacht Sales Inc. Shestakov Yacht Sales Inc., the official representative of the Miami/Fort Lauderdale FL headquarters.

Contact details

Email: andrey@shestakovyachtsales.com

Web: shestakovyachtsales.com/en/

Telephones

USA: +1(954)274-4435

Office hours

Monday – Saturday: **9:00 - 21:00** EDT

Sunday: **closed**

Address



Harbour Towne Marina, 850 NE 3rd St,
STE 213, Dania, FL 33004