

GRAND LADY — FLEMING YACHTS



Builder: FLEMING YACHTS

Year Built: 2001

Model: Motor Yacht

Price: PRICE ON APPLICATION

Location: Netherlands

LOA: 55' 9" (16.99m)

Beam: 16.01

Min Draft: 5' (1.53m)

Cruise Speed: 8 Knots Kts. (9 MPH)

Max Speed: 14 Knots Kts. (16 MPH)

Our experienced yacht broker, Andrey Shestakov, will help you choose and buy a yacht that best suits your needs **Grand Lady — FLEMING YACHTS** from our catalogue. Presently, at Shestakov Yacht Sales Inc., we have a wide variety of yachts available on our sale's list. We also work in close contact with all the big yacht manufacturers from all over the world.

If you would like to buy a yacht **Grand Lady — FLEMING YACHTS** or would like help answering any questions concerning purchasing, selling or chartering a yacht, please call **+1(954)274-4435**

TABLE OF CONTENTS

TABLE OF CONTENTS	2
SPECIFICATIONS	4
Overview	4
Basic Information	4
Dimensions	4
Speed, Capacities and Weight	4
Accommodations	4
Hull and Deck Information	5
Engine Information	5
PHOTOS	6
IMG_20180822_071146	6
IMG_20180822_071331	6
IMG_20180822_071237	6
IMG_20180822_070811	6
IMG_20180822_070945	7
IMG_20180822_071000	7
IMG_20181003_171121	7
IMG_20181003_171105	7
IMG_20180917_092113	8
IMG_20181003_171142	8
IMG_20180917_092928	8
IMG_20180917_092846	8
IMG_20181003_120013	9
IMG_20181003_180045	9
IMG_20180328_085443	9
IMG_20180328_085511	9
IMG_20180328_090603	10
IMG_20180328_085338	10

IMG_20180328_090120	10
PANO_20181003_170104	10
IMG_20181003_165930	11
IMG_20181003_165945	11
IMG_20180328_091316	11
IMG_20180328_091240	11
IMG_20180328_091501	12
IMG_20180328_091245	12
IMG_20181003_155648	12
PANO_20181003_160321	12
IMG_20181003_155848	13
IMG_20181003_160607	13
IMG_20181003_155825	13
IMG_20180328_090204	13
IMG_20180917_092318	14
IMG_20180917_092246	14
IMG_20180917_092450	14
CONTACTS	15
Contact details	15
Telephones	15
Office hours	15
Address	15

SPECIFICATIONS

Overview

Fleming 55 pilothouse motor yacht "Grand Lady", built by Fleming yachts in 2001 and customized (to the highest Swedish boat building craftsmanship) by her current owner in 2007. The current owner has more or less replaced all her equipment to the newest standard plus she has been massively upgraded. This Fleming 55 with extended saloon, closed galley and three cabin layout offers a lot of living space, perfect for a longer stay on board! Very well maintained and viewing in our salesmarina in Sneek - Holland is highly recommended!

Basic Information

Category: Motor Yacht

Model Year: 2001

Year Built: 2001

Country: Netherlands

Dimensions

LOA: 55' 9" (16.99mm)

LWL: 50' 2" (15.27mm)

Beam: 16.01

Min Draft: 5' (1.53mm)

Speed, Capacities and Weight

Cruise Speed: 8 Knots Kts. (9 MPH)

Max Speed: 14 Knots Kts. (16 MPH)

Water Capacity: 1132 Gallons

Holding Tank: 0.26 Gal Gallons

Fuel Capacity: 1024.99 Gal Gallons

Accommodations

Total Cabins: 3

Hull and Deck Information

Hull Material: GRP

Deck Material: GRP

Hull Color: white

Engine Information

Engines: 2

Manufacturer: Caterpillar

Engine Type: Inboard

Fuel Type: Diesel

PHOTOS

IMG_20180822_071331



IMG_20180822_071146



IMG_20180822_071237



IMG_20180822_070811



IMG_20180822_070945



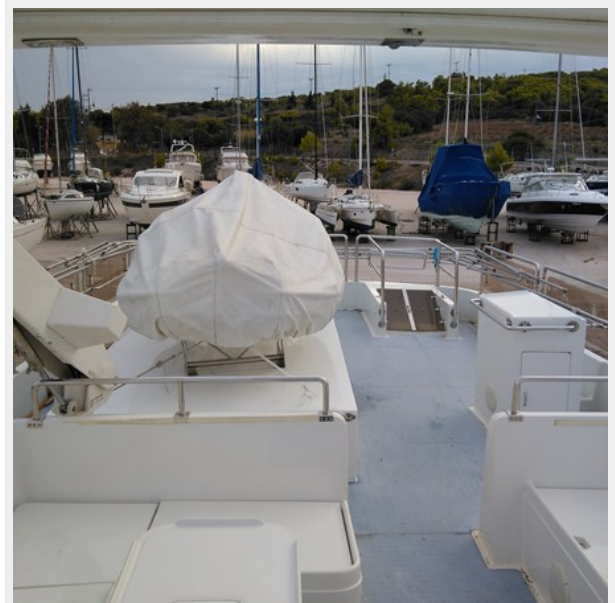
IMG_20180822_071000



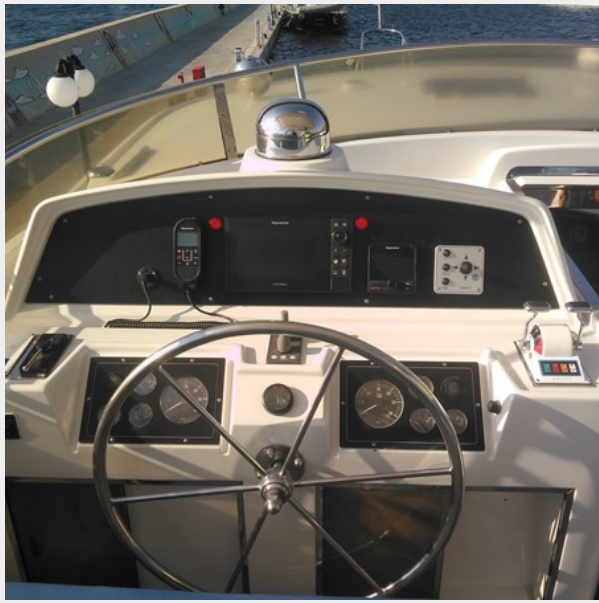
IMG_20181003_171121



IMG_20181003_171105



IMG_20180917_092113



IMG_20181003_171142



IMG_20180917_092928



IMG_20180917_092846



IMG_20181003_120013



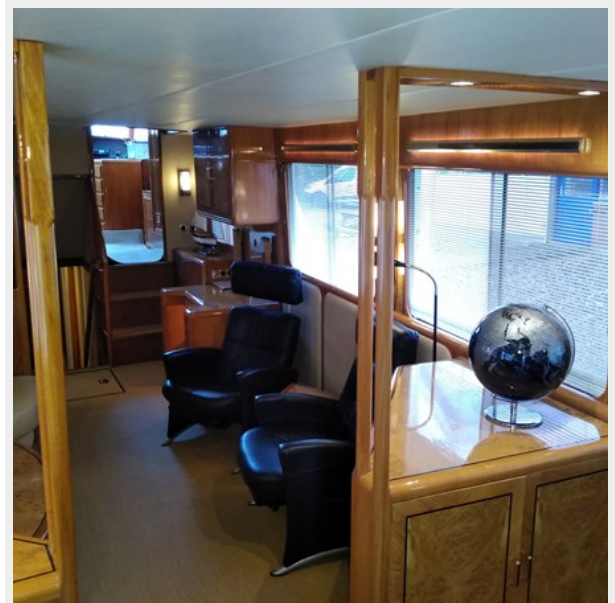
IMG_20181003_180045



IMG_20180328_085443



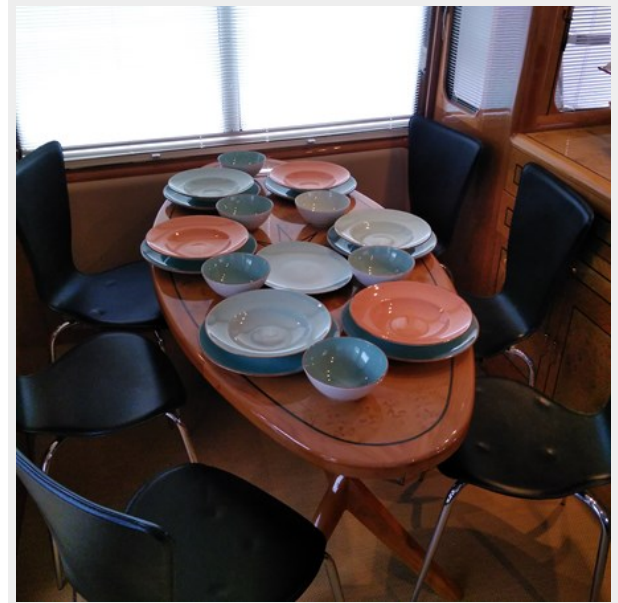
IMG_20180328_085511



IMG_20180328_090603



IMG_20180328_085338



IMG_20180328_090120



PANO_20181003_170104



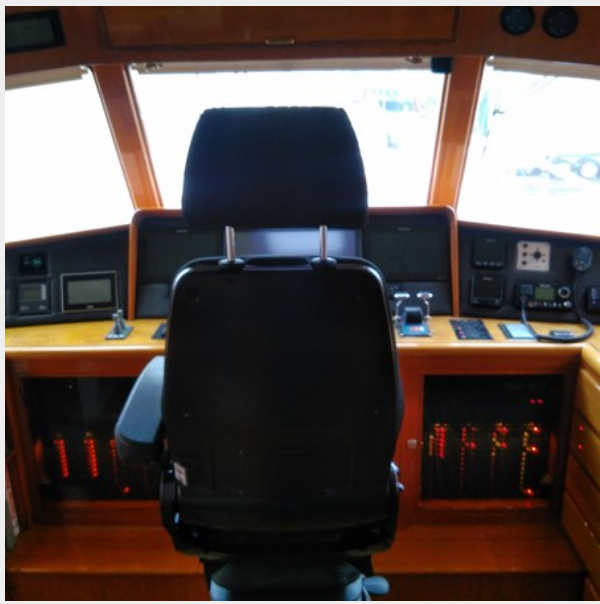
IMG_20181003_165930



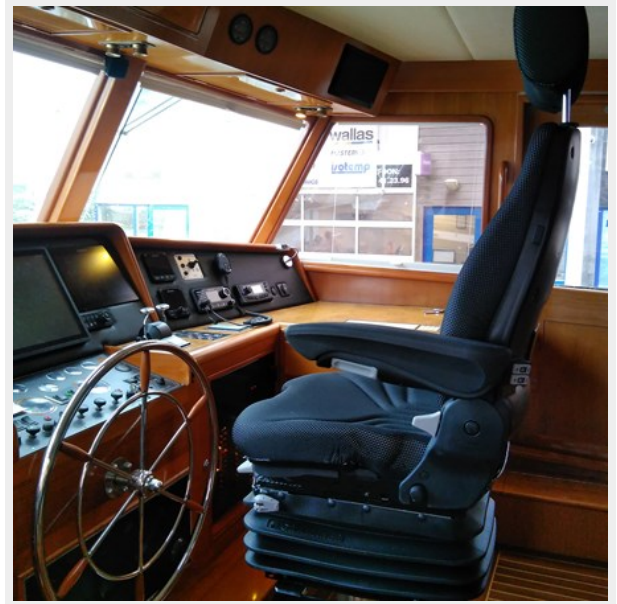
IMG_20181003_165945



IMG_20180328_091316



IMG_20180328_091240



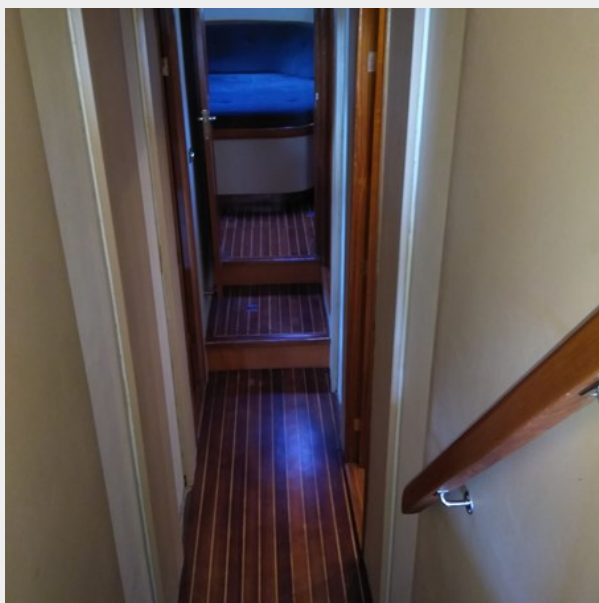
IMG_20180328_091501



IMG_20180328_091245



IMG_20181003_155648



PANO_20181003_160321



IMG_20181003_155848



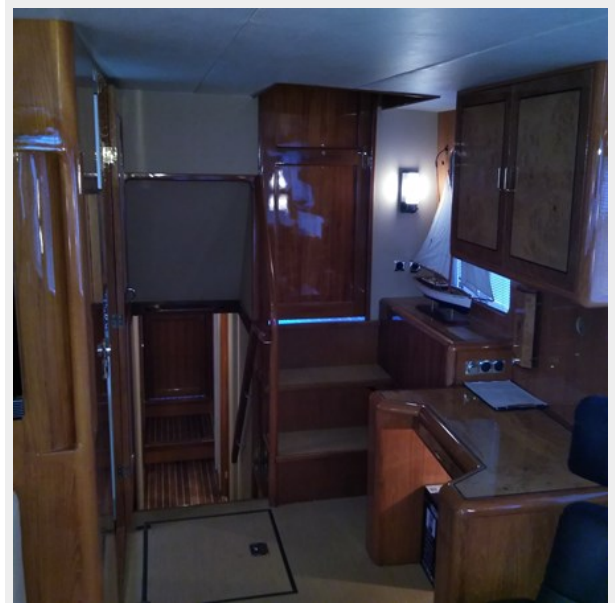
IMG_20181003_160607



IMG_20181003_155825



IMG_20180328_090204



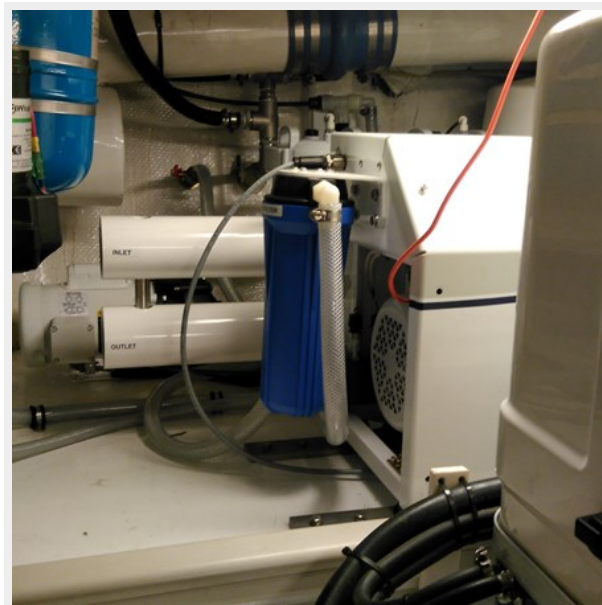
IMG_20180917_092318



IMG_20180917_092246



IMG_20180917_092450



CONTACTS

Andrey Shestakov, leading yacht broker of the sales department of Shestakov Yacht Sales Inc. Shestakov Yacht Sales Inc., the official representative of the Miami/Fort Lauderdale FL headquarters.

Contact details

Email: andrey@shestakovyachtsales.com

Web: shestakovyachtsales.com/en/

Telephones

USA: +1(954)274-4435

Office hours

Monday – Saturday: **9:00 - 21:00** EDT

Sunday: **closed**

Address



Harbour Towne Marina, 850 NE 3rd St,
STE 213, Dania, FL 33004