

KISSES — PERMARE



Builder: PERMARE

Year Built: 2009

Model: Motor Yacht

Price: \$2,999,000 USD

Location: United States

LOA: 92' (28.04mm)

Beam: 21

Cruise Speed: 27 Knots Kts. (31 MPH)

Max Speed: 31 Knots Kts. (36 MPH)

Our experienced yacht broker, Andrey Shestakov, will help you choose and buy a yacht that best suits your needs **Kisses — PERMARE** from our catalogue. Presently, at Shestakov Yacht Sales Inc., we have a wide variety of yachts available on our sale's list. We also work in close contact with all the big yacht manufacturers from all over the world.

If you would like to buy a yacht **Kisses — PERMARE** or would like help answering any questions concerning purchasing, selling or chartering a yacht, please call **+1(954)274-4435**

TABLE OF CONTENTS

TABLE OF CONTENTS	2
SPECIFICATIONS	5
Overview	5
Basic Information	6
Dimensions	6
Speed, Capacities and Weight	6
Accommodations	6
Hull and Deck Information	6
Engine Information	6
PHOTOS	7
92-2009-Amer-Gruppo-Permare-06	7
92-2009-Amer-Gruppo-Permare-09	7
92-2009-Amer-Gruppo-Permare-02	7
92-2009-Amer-Gruppo-Permare-10	7
92-2009-Amer-Gruppo-Permare-19	7
92-2009-Amer-Gruppo-Permare-08	7
92-2009-Amer-Gruppo-Permare-04	8
92-2009-Amer-Gruppo-Permare-11	8
92-2009-Amer-Gruppo-Permare-07	8
92-2009-Amer-Gruppo-Permare-12	8
92-2009-Amer-Gruppo-Permare-20	8
92-2009-Amer-Gruppo-Permare-03	8
92-2009-Amer-Gruppo-Permare-05	9
92-2009-Amer-Gruppo-Permare-23	9
92-2009-Amer-Gruppo-Permare-24	9
92-2009-Amer-Gruppo-Permare-13	9
92-2009-Amer-Gruppo-Permare-25	9
92-2009-Amer-Gruppo-Permare-51	9

92-2009-Amer-Gruppo-Permare-52	10
92-2009-Amer-Gruppo-Permare-31	10
92-2009-Amer-Gruppo-Permare-53	10
92-2009-Amer-Gruppo-Permare-32	10
92-2009-Amer-Gruppo-Permare-28	10
92-2009-Amer-Gruppo-Permare-33	10
92-2009-Amer-Gruppo-Permare-15	11
92-2009-Amer-Gruppo-Permare-29	11
92-2009-Amer-Gruppo-Permare-21	11
92-2009-Amer-Gruppo-Permare-47	11
92-2009-Amer-Gruppo-Permare-59	11
92-2009-Amer-Gruppo-Permare-36	11
92-2009-Amer-Gruppo-Permare-22	12
92-2009-Amer-Gruppo-Permare-48	12
92-2009-Amer-Gruppo-Permare-43	12
92-2009-Amer-Gruppo-Permare-56	12
92-2009-Amer-Gruppo-Permare-26	12
92-2009-Amer-Gruppo-Permare-55	12
92-2009-Amer-Gruppo-Permare-58	13
92-2009-Amer-Gruppo-Permare-35	13
92-2009-Amer-Gruppo-Permare-37	13
92-2009-Amer-Gruppo-Permare-41	13
92-2009-Amer-Gruppo-Permare-17	13
92-2009-Amer-Gruppo-Permare-50	13
92-2009-Amer-Gruppo-Permare-30	14
92-2009-Amer-Gruppo-Permare-60	14
92-2009-Amer-Gruppo-Permare-18	14
92-2009-Amer-Gruppo-Permare-39	14
92-2009-Amer-Gruppo-Permare-14	14

92-2009-Amer-Gruppo-Permare-49	14
92-2009-Amer-Gruppo-Permare-44	15
92-2009-Amer-Gruppo-Permare-27	15
92-2009-Amer-Gruppo-Permare-45	15
92-2009-Amer-Gruppo-Permare-54	15
92-2009-Amer-Gruppo-Permare-57	15
92-2009-Amer-Gruppo-Permare-16	15
92-2009-Amer-Gruppo-Permare-40	16
92-2009-Amer-Gruppo-Permare-38	16
92-2009-Amer-Gruppo-Permare-42	16
92-2009-Amer-Gruppo-Permare-46	16
92-2009-Amer-Gruppo-Permare-34	16
CONTACTS	17
Contact details	17
Telephones	17
Office hours	17
Address	17

SPECIFICATIONS

Overview

IN AN LLC

Built by the Permare Group and thus synonymous with superb quality, the Amer 92' is the jewel in the versatile and innovative Sanremo yard's crown. For the truly discernible owner in terms of performance and design "Kisses" is a highly customized and uniquely designed yacht that will provide its owners and their guests with an amazing yachting experience. Personally designed by the owner, the interiors will transform you to another world. Each room carries its own color palette with complementary accents and artwork.

Built in 2009, the 92' Amer Gruppo Permare was specifically designed for high performance & excellent seaworthiness. The hull is a monoedric, planing V-bottom type design. This ideal hull-carrying capacity combined with the gyro stabilizers results in a smooth wave response and exceptional handling capability. The Amer 92' incorporates a multitude of high tech features. Particular attention was given to technical characteristics of the materials used in the lamination phase to optimize the rigidity of the fiberglass and the boat's overall weight. Additional thought was given to the design and insulation of the structure to reduce both noise and vibrations ensuring that guests would be comfortable underway and at anchor.

The saloon is spacious and offers a uniquely designed interior with enough seating area for a large group and the best in materials and décor. The galley is large, modern and very well appointed. It is located across from the dining area for ease of access and provides a partition that can be closed for complete privacy.

"Kisses" offers a full beam, mid-ship Master Stateroom that is larger than most yachts in its category. A particular feature of the Master Stateroom is its two separate access doors. This provides a specific level of privacy to the owners. The yacht has twin VIP staterooms that offer identical amenities with plenty of comfort for the guests. A third guest stateroom features two twin beds.

The 92' Amer Gruppo Permare offers several excellent outdoor deck areas in addition to a well ambient-lit main salon and separate dining area with easy access to a chef's galley. An open flybridge and upper helm keeps the Captain company with guest seating arranged around tables, sofas and sunpads. Entertaining on this deck is easy with a wet bar featuring refrigeration, grill and sink.

The crew quarters are located forward of the ship and private from the guest area. There is a private head and 2 staterooms with accommodations for three (3) crewmembers.

Permare Group is a unique and dedicated Italian yacht builder offering a full range of fully custom yachts and mega yachts on its size range. The 92' Amer was built with the best in materials and design for optimum quality and performance. The Permare Group was established in the '70s by

the great passion for the sea of its founder Fernando Amerio.

This unique vessel is easily available to show in Marina Del Rey, CA. All reasonable offers considered.

Basic Information

Category: Motor Yacht

Model Year: 2009

Year Built: 2009

Country: United States

Dimensions

LOA: 92' (28.04mm)

Beam: 21

Speed, Capacities and Weight

Cruise Speed: 27 Knots Kts. (31 MPH)

Max Speed: 31 Knots Kts. (36 MPH)

Water Capacity: 528 Gallons

Fuel Capacity: 2100 Gal Gallons

Accommodations

Total Cabins: 2

Total Heads: 4

Hull and Deck Information

Hull Material: Fiberglass

Engine Information

Engines: 2

Manufacturer: Caterpillar

Engine Type: Inboard

Fuel Type: Diesel

PHOTOS

92-2009-Amer-Gruppo-Permcare-06



92-2009-Amer-Gruppo-Permcare-09



92-2009-Amer-Gruppo-Permcare-02



92-2009-Amer-Gruppo-Permcare-10



92-2009-Amer-Gruppo-Permcare-19



92-2009-Amer-Gruppo-Permcare-08



92-2009-Amer-Gruppo-Permcare-04



92-2009-Amer-Gruppo-Permcare-11



92-2009-Amer-Gruppo-Permcare-07



92-2009-Amer-Gruppo-Permcare-12



92-2009-Amer-Gruppo-Permcare-20



92-2009-Amer-Gruppo-Permcare-03



92-2009-Amer-Gruppo-Permare-05



92-2009-Amer-Gruppo-Permare-23



92-2009-Amer-Gruppo-Permare-24



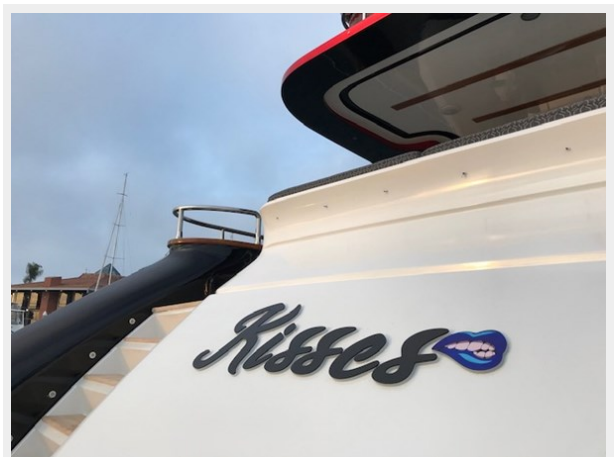
92-2009-Amer-Gruppo-Permare-13



92-2009-Amer-Gruppo-Permare-25



92-2009-Amer-Gruppo-Permare-51



92-2009-Amer-Gruppo-Permcare-52



92-2009-Amer-Gruppo-Permcare-31



92-2009-Amer-Gruppo-Permcare-53



92-2009-Amer-Gruppo-Permcare-32



92-2009-Amer-Gruppo-Permcare-28



92-2009-Amer-Gruppo-Permcare-33



92-2009-Amer-Gruppo-Permare-15



92-2009-Amer-Gruppo-Permare-29



92-2009-Amer-Gruppo-Permare-21



92-2009-Amer-Gruppo-Permare-47



92-2009-Amer-Gruppo-Permare-59



92-2009-Amer-Gruppo-Permare-36



92-2009-Amer-Gruppo-Permcare-22



92-2009-Amer-Gruppo-Permcare-48



92-2009-Amer-Gruppo-Permcare-43



92-2009-Amer-Gruppo-Permcare-56



92-2009-Amer-Gruppo-Permcare-26



92-2009-Amer-Gruppo-Permcare-55



92-2009-Amer-Gruppo-Permare-58



92-2009-Amer-Gruppo-Permare-35



92-2009-Amer-Gruppo-Permare-37

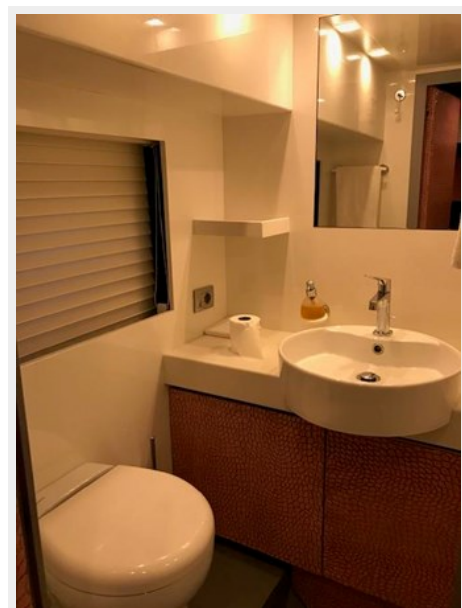
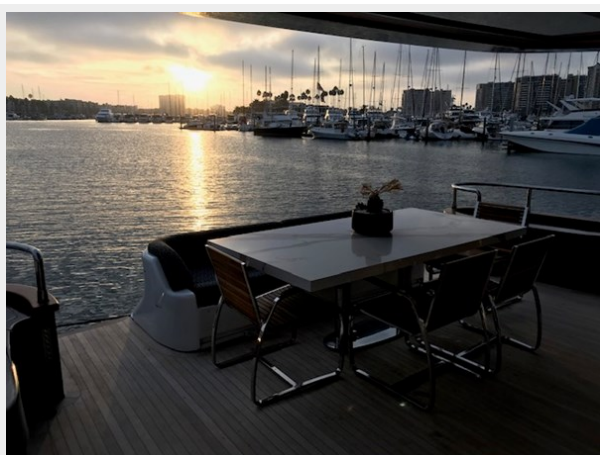


92-2009-Amer-Gruppo-Permare-41



92-2009-Amer-Gruppo-Permare-17

92-2009-Amer-Gruppo-Permare-50



92-2009-Amer-Gruppo-Permcare-30



92-2009-Amer-Gruppo-Permcare-60



92-2009-Amer-Gruppo-Permcare-18



92-2009-Amer-Gruppo-Permcare-39



92-2009-Amer-Gruppo-Permcare-14



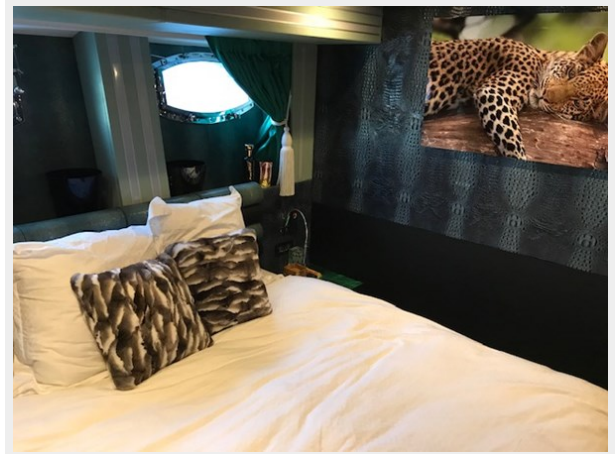
92-2009-Amer-Gruppo-Permcare-49



92-2009-Amer-Gruppo-Permcare-44



92-2009-Amer-Gruppo-Permcare-27



92-2009-Amer-Gruppo-Permcare-45



92-2009-Amer-Gruppo-Permcare-54



92-2009-Amer-Gruppo-Permcare-57



92-2009-Amer-Gruppo-Permcare-16



92-2009-Amer-Gruppo-Permcare-40



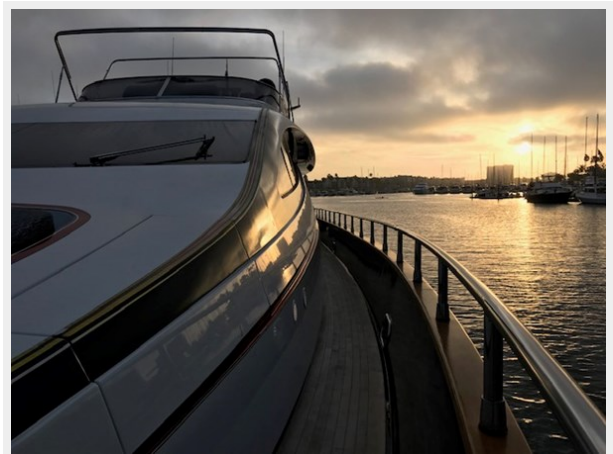
92-2009-Amer-Gruppo-Permcare-38



92-2009-Amer-Gruppo-Permcare-42



92-2009-Amer-Gruppo-Permcare-46



92-2009-Amer-Gruppo-Permcare-34



CONTACTS

Andrey Shestakov, leading yacht broker of the sales department of Shestakov Yacht Sales Inc. Shestakov Yacht Sales Inc., the official representative of the Miami/Fort Lauderdale FL headquarters.

Contact details

Email: andrey@shestakovyachtsales.com

Web: shestakovyachtsales.com/en/

Telephones

USA: +1(954)274-4435

Office hours

Monday – Saturday: **9:00 - 21:00** EDT

Sunday: **closed**

Address



Harbour Towne Marina, 850 NE 3rd St,
STE 213, Dania, FL 33004