

1986 CHEOY LEE 65 MIDNIGHT LACE — CHEOY LEE



Builder: CHEOY LEE

Year Built: 1986

Model: Motor Yacht

Price: \$289,900 USD

Location: United States

LOA: 65' 5" (19.94mm)

Beam: 18.75

Max Draft: 3' 11" (1.19mm)

Cruise Speed: 22 Knots Kts. (25 MPH)

Max Speed: 32 Knots Kts. (37 MPH)

Our experienced yacht broker, Andrey Shestakov, will help you choose and buy a yacht that best suits your needs 1986 Cheoy Lee 65 Midnight Lace — CHEOY LEE from our catalogue. Presently, at Shestakov Yacht Sales Inc., we have a wide variety of yachts available on our sale's list. We also work in close contact with all the big yacht manufacturers from all over the world.

If you would like to buy a yacht 1986 Cheoy Lee 65 Midnight Lace — CHEOY LEE or would like help answering any questions concerning purchasing, selling or chartering a yacht, please call **+1(954)274-4435**

TABLE OF CONTENTS

TABLE OF CONTENTS	2
SPECIFICATIONS	5
Overview	5
Basic Information	5
Dimensions	5
Speed, Capacities and Weight	5
Accommodations	5
Hull and Deck Information	5
Engine Information	6
PHOTOS	7
2	7
3	7
5	7
4	7
6	7
7	7
8	8
9	8
10	8
11	8
12	8
13	8
14	9
15	9
16	9
17	9
18	9
19	9

20	10
21	10
22	10
23	10
24	10
25	10
26	11
27	11
28	11
29	11
30	11
31	11
32	12
33	12
34	12
35	12
36	12
37	12
38	13
39	13
40	13
41	13
42	13
43	13
44	14
45	14
46	14
47	14
48	14

49	14
50	15
51	15
52	15
53	15
54	15
55	15
56	16
57	16
59	16
58	16
60	17
61	17
CONTACTS	18
Contact details	18
Telephones	18
Office hours	18
Address	18

SPECIFICATIONS

Overview

Featured in the movie Wild Things with Kevin Bacon and Matt Dillon This boat rides on top of the water not in the water. An ingenious design for speed and fuel economy. Designed by naval architect Tom Fexas. Only 65 Midnight Lace ever built

Basic Information

Category: Motor Yacht

Model Year: 1986

Year Built: 1986

Country: United States

Dimensions

LOA: 65' 5" (19.94mm)

Beam: 18.75

Max Draft: 3' 11" (1.19mm)

Speed, Capacities and Weight

Cruise Speed: 22 Knots Kts. (25 MPH)

Max Speed: 32 Knots Kts. (37 MPH)

Water Capacity: 400 Gallons

Fuel Capacity: 600 Gal Gallons

Accommodations

Total Cabins: 2

Total Berths: 2

Total Heads: 2

Hull and Deck Information

Hull Material: Fiberglass

Engine Information

Engines: 2

Manufacturer: MAN

Engine Type: Inboard

Fuel Type: Diesel

PHOTOS

2



3



4



5



6



7



8



9



10



11



12



13



14



15



16



17



18



19



20



21



22



23



24



25



26



27



28



29



30



31



32



33



34



35



36



37



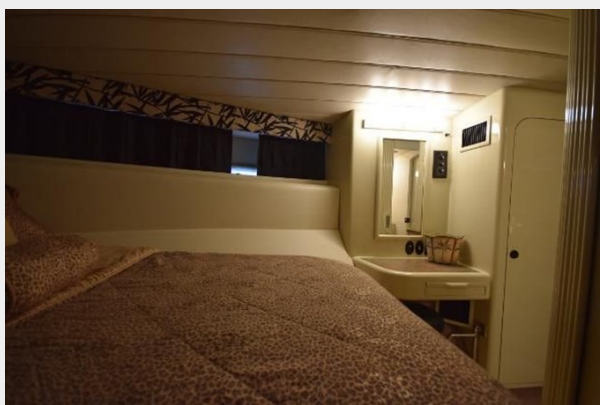
38



39



40



41



42



43



44



45



46



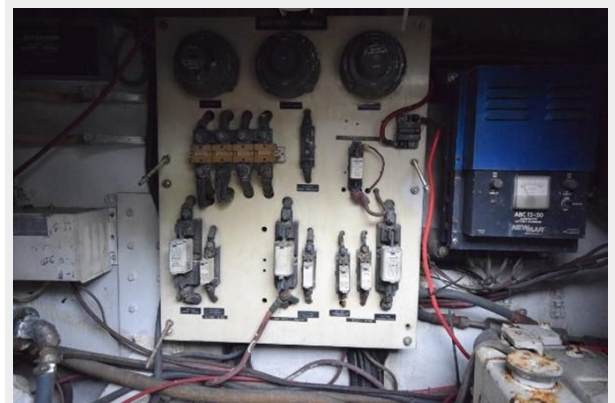
47



48



49



50



51



52



53



54



55



56



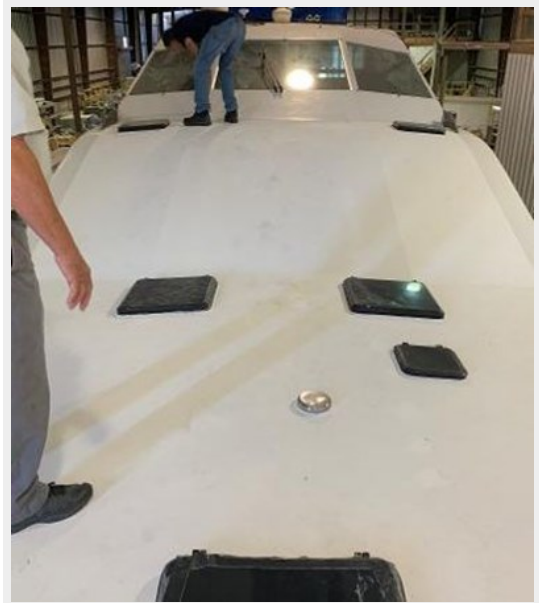
57



58



59



60



61



CONTACTS

Andrey Shestakov, leading yacht broker of the sales department of Shestakov Yacht Sales Inc. Shestakov Yacht Sales Inc., the official representative of the Miami/Fort Lauderdale FL headquarters.

Contact details

Email: andrey@shestakovyachtsales.com

Web: shestakovyachtsales.com/en/

Telephones

USA: +1(954)274-4435

Office hours

Monday – Saturday: **9:00 - 21:00** EDT

Sunday: **closed**

Address



Harbour Towne Marina, 850 NE 3rd St,
STE 213, Dania, FL 33004