

SANLORENZO SL106 — SANLORENZO



Builder: SANLORENZO

Year Built: 2015

Model: Motor Yacht

Price: PRICE ON APPLICATION

Location: Hong Kong

LOA: 105' 8" (32.2mm)

Cruise Speed: 25 Knots Kts. (29 MPH)

Max Speed: 29 Knots Kts. (33 MPH)

Our experienced yacht broker, Andrey Shestakov, will help you choose and buy a yacht that best suits your needs **Sanlorenzo SL106 — SANLORENZO** from our catalogue. Presently, at **Shestakov Yacht Sales Inc.**, we have a wide variety of yachts available on our sale's list. We also work in close contact with all the big yacht manufacturers from all over the world.

If you would like to buy a yacht **Sanlorenzo SL106 — SANLORENZO** or would like help answering any questions concerning purchasing, selling or chartering a yacht, please call **+1(954)274-4435**

TABLE OF CONTENTS

TABLE OF CONTENTS	2
SPECIFICATIONS	4
Overview	4
Basic Information	4
Dimensions	4
Speed, Capacities and Weight	4
Accommodations	4
Hull and Deck Information	4
Engine Information	5
PHOTOS	6
Screenshot 2019-07-08 at 17.31.04	6
Sanlorenzo SL106_4	6
Screenshot 2019-07-08 at 17.30.45	6
Screenshot 2019-07-08 at 17.30.54	6
Screenshot 2019-07-08 at 17.30.18	6
Sanlorenzo SL106_1	6
Sanlorenzo SL106_9	7
Sanlorenzo SL106_11	7
Screenshot 2019-07-08 at 17.31.14	7
Screenshot 2019-07-08 at 17.31.32	7
Screenshot 2019-07-08 at 17.32.24	7
Screenshot 2019-07-08 at 17.31.56	7
Screenshot 2019-07-08 at 17.32.58	8
Screenshot 2019-07-08 at 17.32.48	8
Screenshot 2019-07-08 at 17.33.09	8
Screenshot 2019-07-08 at 17.33.18	8
Screenshot 2019-07-08 at 17.32.14	8
Screenshot 2019-07-08 at 17.33.32	8

CONTACTS	9
Contact details	9
Telephones	9
Office hours	9
Address	9

SPECIFICATIONS

Overview

N/A

Basic Information

Category: Motor Yacht

Sub Category: Flybridge

Model Year: 2015

Year Built: 2015

Country: Hong Kong

Dimensions

LOA: 105' 8" (32.2mm)

Speed, Capacities and Weight

Cruise Speed: 25 Knots Kts. (29 MPH)

Cruise Speed Range: 407

Max Speed: 29 Knots Kts. (33 MPH)

Gross Tonnage: 199 Pounds

Water Capacity: 800 Gallons

Fuel Capacity: 2192.63 Gal Gallons

Fuel Consumption: 1083.11 Gal Gallons

Accommodations

Total Cabins: 3

Sleeps: 6

Hull and Deck Information

Hull Material: Fiberglass

Engine Information

Engines: 2

Manufacturer: MTU

Engine Type: Inboard

Fuel Type: Diesel

PHOTOS

Screenshot 2019-07-08 at 17.31.04



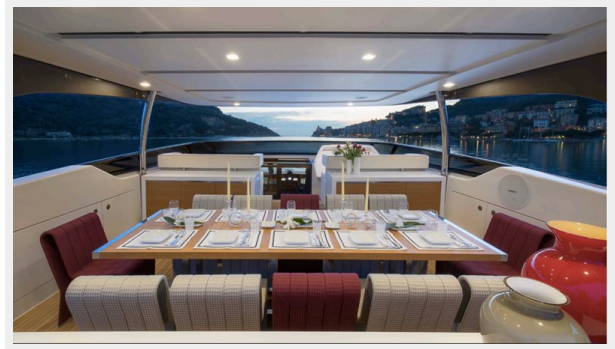
Sanlorenzo SL106_4



Screenshot 2019-07-08 at 17.30.45



Screenshot 2019-07-08 at 17.30.54



Screenshot 2019-07-08 at 17.30.18



Sanlorenzo SL106_1



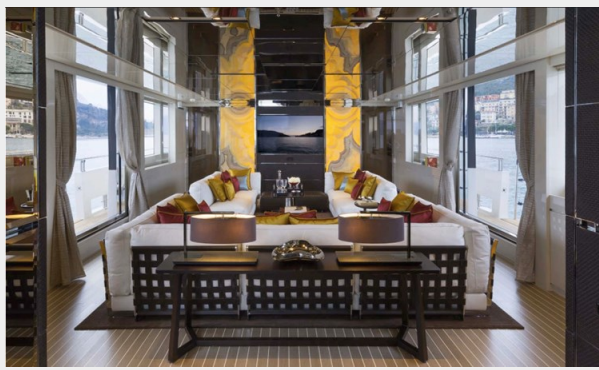
Sanlorenzo SL106_9



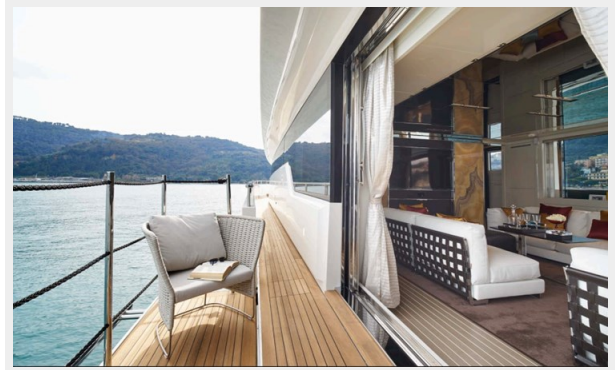
Sanlorenzo SL106_11



Screenshot 2019-07-08 at 17.31.14



Screenshot 2019-07-08 at 17.31.32



Screenshot 2019-07-08 at 17.31.56



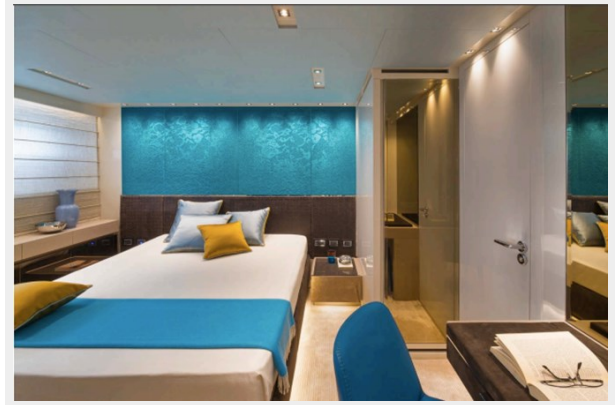
Screenshot 2019-07-08 at 17.32.24



Screenshot 2019-07-08 at 17.32.48



Screenshot 2019-07-08 at 17.32.58



Screenshot 2019-07-08 at 17.33.09



Screenshot 2019-07-08 at 17.33.18



Screenshot 2019-07-08 at 17.32.14



Screenshot 2019-07-08 at 17.33.32



CONTACTS

Andrey Shestakov, leading yacht broker of the sales department of Shestakov Yacht Sales Inc. Shestakov Yacht Sales Inc., the official representative of the Miami/Fort Lauderdale FL headquarters.

Contact details

Email: andrey@shestakovyachtsales.com

Web: shestakovyachtsales.com/en/

Telephones

USA: +1(954)274-4435

Office hours

Monday – Saturday: **9:00 - 21:00** EDT

Sunday: **closed**

Address



Harbour Towne Marina, 850 NE 3rd St,
STE 213, Dania, FL 33004