

ZEAL — CHRISTENSEN



Builder: CHRISTENSEN

Year Built: 1997

Model: Motor Yacht

Price: PRICE ON APPLICATION

Location: United States

LOA: 155' (47.24mm)

Beam: 28

Min Draft: 8' (2.44mm)

Max Draft: 8' (2.44mm)

Cruise Speed: 12 Knots Kts. (14 MPH)

Max Speed: 16 Knots Kts. (18 MPH)

Our experienced yacht broker, Andrey Shestakov, will help you choose and buy a yacht that best suits your needs **ZEAL — CHRISTENSEN** from our catalogue. Presently, at Shestakov Yacht Sales Inc., we have a wide variety of yachts available on our sale's list. We also work in close contact with all the big yacht manufacturers from all over the world.

If you would like to buy a yacht **ZEAL — CHRISTENSEN** or would like help answering any questions concerning purchasing, selling or chartering a yacht, please call **+1(954)274-4435**

TABLE OF CONTENTS

TABLE OF CONTENTS	2
SPECIFICATIONS	5
Overview	5
Basic Information	5
Dimensions	5
Speed, Capacities and Weight	5
Accommodations	5
Hull and Deck Information	6
Engine Information	6
PHOTOS	7
Salon	7
Salon	7
Salon	7
Salon	7
Salon	7
Salon	7
Dining	8
Dining	8
Skylounge	8
Galley	8
Galley	8
Galley	8
Galley	9
Galley	9
Main Deck Entrance Foyer	9
Master Stateroom	9
Master Stateroom	9
Master Head	9

Lower Guest Foyer	10
Master Head	10
Starboard Forward Stateroom	10
Starboard Forward Stateroom	10
Forward Head	10
Forward Head	10
Forward Head	11
Lower Port Forward Stateroom	11
Lower Port Head	11
Lower Port Forward Stateroom in twin configuration	11
Lower Port Head	12
Lower Port Head	12
Lower Port Head	12
Port Forward Stateroom in twin configuration	12
Starboard Forward Stateroom in king configuration	13
Starboard Aft Stateroom (Queen bed)	13
Starboard Aft Head	13
Starboard Aft Stateroom (Queen bed)	13
Port Aft Stateroom with convertible twins	13
Starboard Aft Stateroom (Twin beds)	13
Starboard Aft Stateroom (Twin beds)	14
Port Aft Stateroom	14
Port Aft Stateroom	14
Port Aft Head	14
Port Aft Head	14
Port Aft Head	14
Port Aft Head	15
Port Aft Head	15
Cabin 6 Main Deck	15

Pilothouse	15
Pilothouse	15
Pilothouse	15
Sundeck	16
Sundeck	16
Sundeck	16
Sundeck	16
Jacuzzi	16
Sundeck	16
Bridge Aft Deck	17
Bridge Aft Deck	17
Bridge Aft Deck	17
Aft Deck	17
Aft Deck	17
Aft Deck	17
Aft Deck	18
Wing Controls	18
Bow	18
Bow	18
Engine Room	18
CONTACTS	20
Contact details	20
Telephones	20
Office hours	20
Address	20

SPECIFICATIONS

Overview

Basic Information

Category: Motor Yacht

Sub Category: Mega Yacht

Model Year: 1997

Year Built: 1997

Country: United States

Dimensions

LOA: 155' (47.24mm)

Beam: 28

Min Draft: 8' (2.44mm)

Max Draft: 8' (2.44mm)

Speed, Capacities and Weight

Cruise Speed: 12 Knots Kts. (14 MPH)

Cruise Speed Range: 3500

Max Speed: 16 Knots Kts. (18 MPH)

Gross Tonnage: 460 Pounds

Water Capacity: 1800 Gallons

Holding Tank: 360 Gal Gallons

Fuel Capacity: 12000 Gal Gallons

Accommodations

Total Cabins: 6

Sleeps: 12

Total Heads: 7

Crew Berths: 10

Hull and Deck Information

Hull Material: Fiberglass

Deck Material: Teak

Hull Configuration: Semi-Displacement

Engine Information

Engines: 2

Manufacturer: Deutz

Engine Type: Inboard

Fuel Type: Diesel

PHOTOS

Salon



Salon



Salon



Salon



Salon



Salon



Dining



Dining



Skylounge



Galley



Galley



Galley



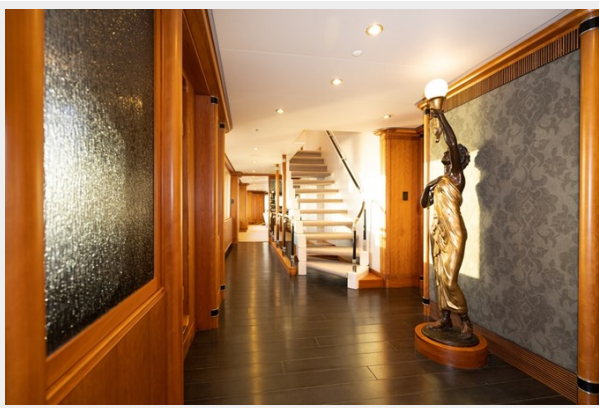
Galley



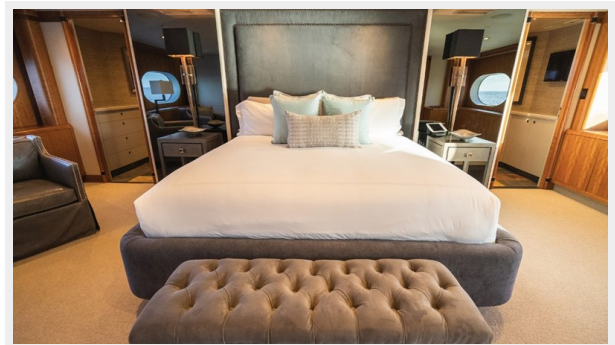
Galley



Main Deck Entrance Foyer



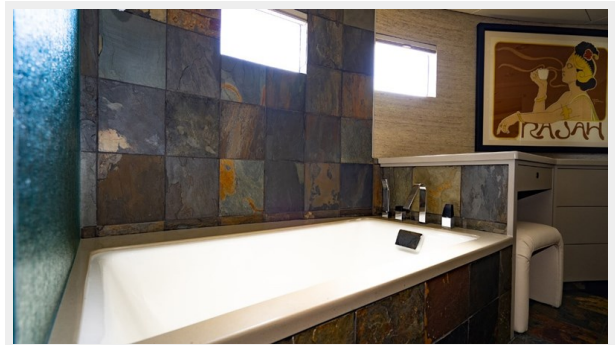
Master Stateroom



Master Stateroom



Master Head



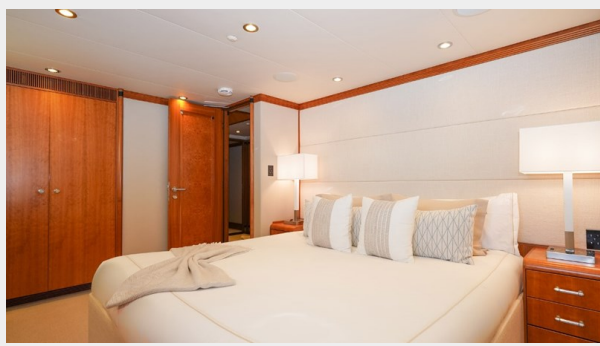
Master Head



Lower Guest Foyer



Starboard Forward Stateroom



Starboard Forward Stateroom



Forward Head



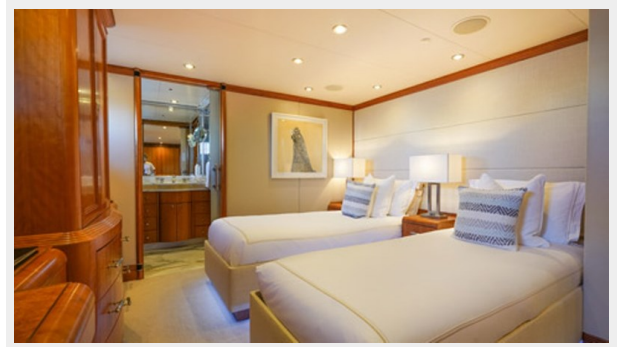
Forward Head



Forward Head



Lower Port Forward Stateroom



Lower Port Forward Stateroom in twin configuration



Lower Port Head



Lower Port Head



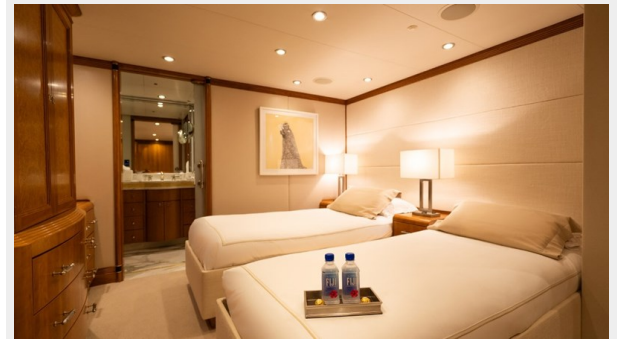
Lower Port Head



Lower Port Head



Port Forward Stateroom in twin configuration



Starboard Forward Stateroom in king configuration



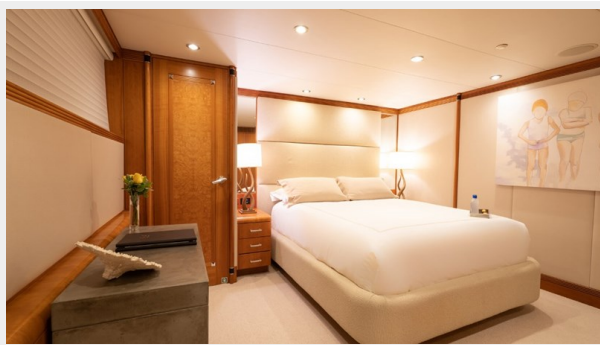
Starboard Aft Stateroom (Queen bed)



Starboard Aft Head



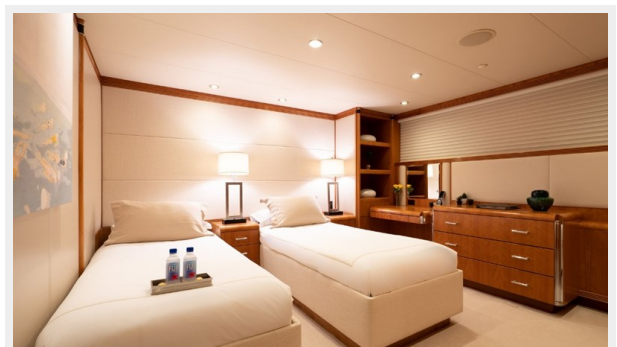
Starboard Aft Stateroom (Queen bed)



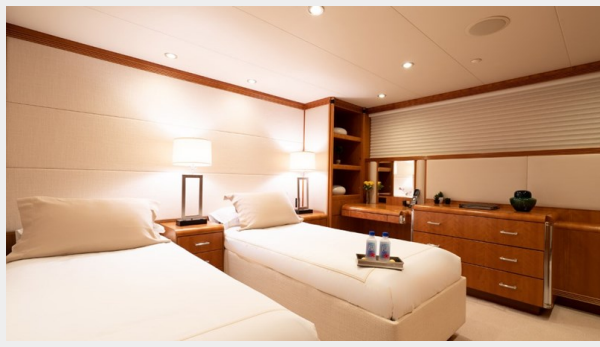
Port Aft Stateroom with convertible twins



Starboard Aft Stateroom (Twin beds)



Starboard Aft Stateroom (Twin beds)



Port Aft Stateroom



Port Aft Stateroom



Port Aft Head



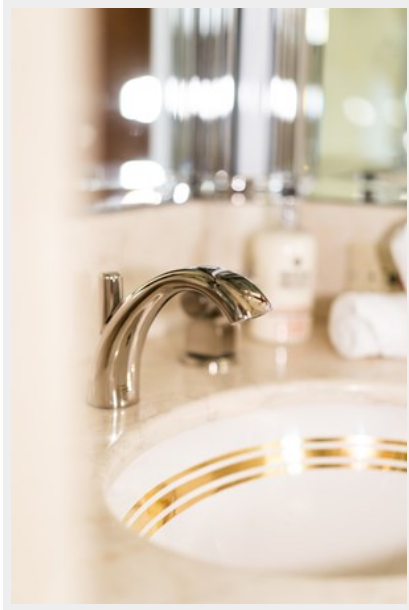
Port Aft Head



Port Aft Head



Port Aft Head



Port Aft Head



Cabin 6 Main Deck



Pilothouse



Pilothouse



Pilothouse



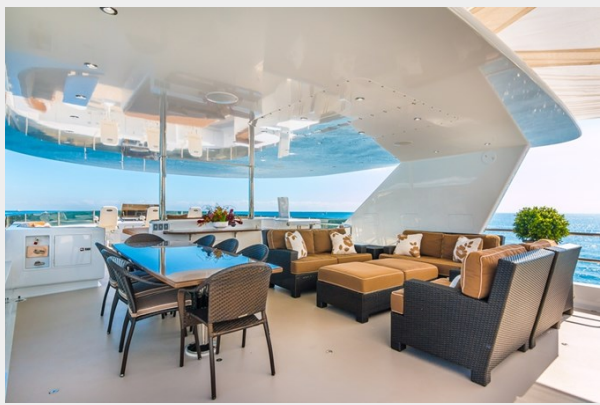
Sundeck



Sundeck



Sundeck



Sundeck



Sundeck



Jacuzzi



Bridge Aft Deck



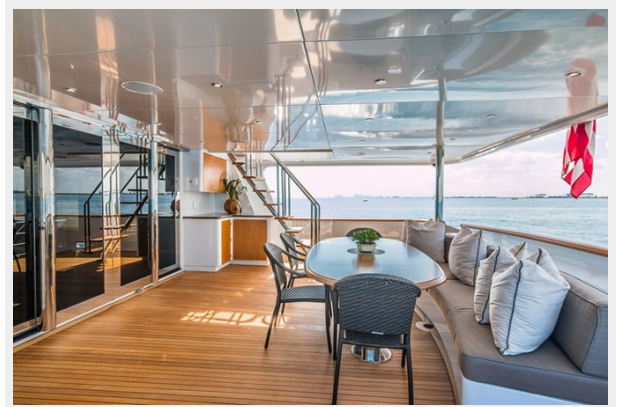
Bridge Aft Deck



Bridge Aft Deck



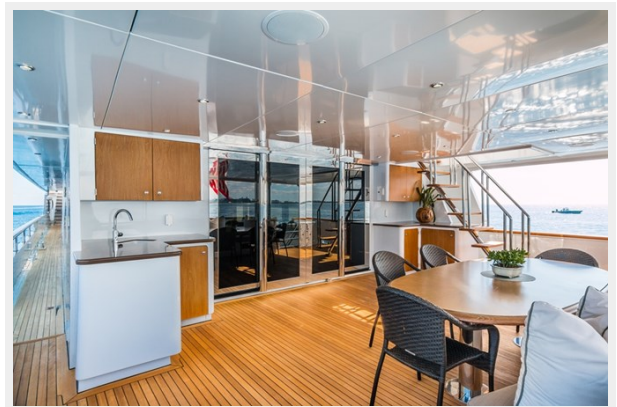
Aft Deck



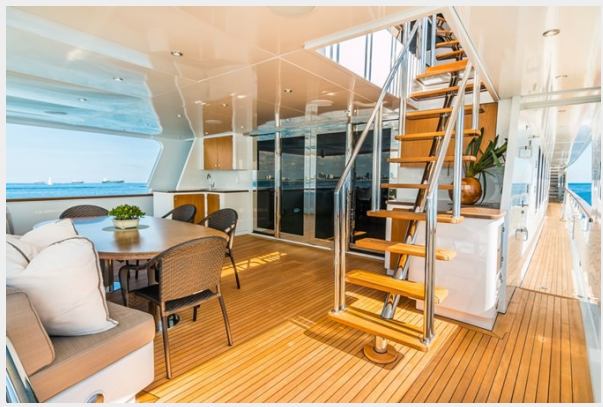
Aft Deck



Aft Deck



Aft Deck



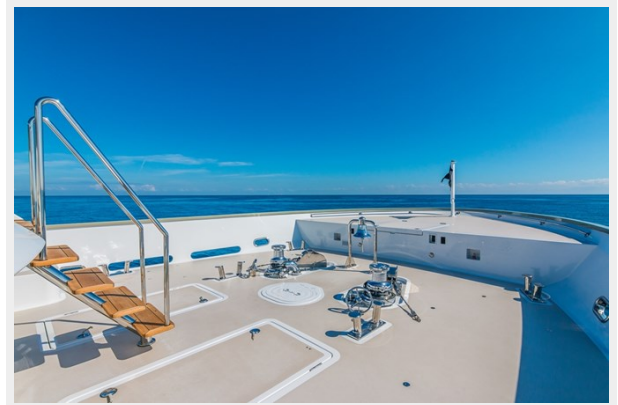
Wing Controls



Bow



Bow



Engine Room





CONTACTS

Andrey Shestakov, leading yacht broker of the sales department of Shestakov Yacht Sales Inc. Shestakov Yacht Sales Inc., the official representative of the Miami/Fort Lauderdale FL headquarters.

Contact details

Email: andrey@shestakovyachtsales.com

Web: shestakovyachtsales.com/en/

Telephones

USA: +1(954)274-4435

Office hours

Monday – Saturday: **9:00 - 21:00** EDT

Sunday: **closed**

Address



Harbour Towne Marina, 850 NE 3rd St,
STE 213, Dania, FL 33004