

WILD WAVES — ANTAGO YACHTS



Builder: ANTAGO YACHTS

LOA: 92' (28.04mm)

Year Built: 1997

Model: Motor Yacht

Price: PRICE ON APPLICATION

Our experienced yacht broker, Andrey Shestakov, will help you choose and buy a yacht that best suits your needs **Wild Waves — ANTAGO YACHTS** from our catalogue. Presently, at Shestakov Yacht Sales Inc., we have a wide variety of yachts available on our sale's list. We also work in close contact with all the big yacht manufacturers from all over the world.

If you would like to buy a yacht **Wild Waves — ANTAGO YACHTS** or would like help answering any questions concerning purchasing, selling or chartering a yacht, please call **+1(954)274-4435**

TABLE OF CONTENTS

TABLE OF CONTENTS	2
SPECIFICATIONS	4
Overview	4
Basic Information	4
Dimensions	4
Accommodations	4
Hull and Deck Information	4
Engine Information	5
PHOTOS	6
WW Air 09L	6
WW Air 17L	6
WW Air 03L	6
WW Air 04L	6
WW Air 06	6
WW Air 05L	6
WW 01L	7
WW 02L	7
WW 04L	7
WW 06L	7
WW 08L	7
WW 09L	7
WW 10L	8
WW 11L	8
WW 12L	8
WW 13L	8
WW 18L	8
WW 20L	8
WW 16L	9

WW 17L	9
WW 22L	9
WW 23L	9
WW 26L	9
WW 40L	9
WW 41L	10
WW 32L	10
WW 33L	10
WW 36L	10
WW 28L	10
WW 29L	10
WW 30L	11
WW 34L	11
WW 34L_1	11
WW 35L	11
WW 39L	11
WW 42L	11
WW 43L	12
WW 44L	12
WW 45L	12
WW 46L	12
WW 47L	12
WW 48L	12
CONTACTS	13
Contact details	13
Telephones	13
Office hours	13
Address	13

SPECIFICATIONS

Overview

Designed by famous naval architect, Fulvio de Simoni and built by Antago Yachts, no expense was spared in the design and materials throughout. Twin diesel MTU power with electronic controls offer efficient speeds up to 26 - 28 knots;

92 Antago Flybridge Motoryacht that will make you feel like you are cruising in an exotic 5 star hotel!

Boat house kept on fresh water - Call for details and an appointment to go aboard.

*Exterior photos coming soon

Basic Information

Category: Motor Yacht

Model Year: 1997

Year Built: 1997

Dimensions

LOA: 92' (28.04mm)

Accommodations

Total Cabins: 4

Hull and Deck Information

Hull Material: Fiberglass

Engine Information

Engines: 2

Manufacturer: MTU

Engine Type: Inboard

Fuel Type: Diesel

PHOTOS

WW Air 09L



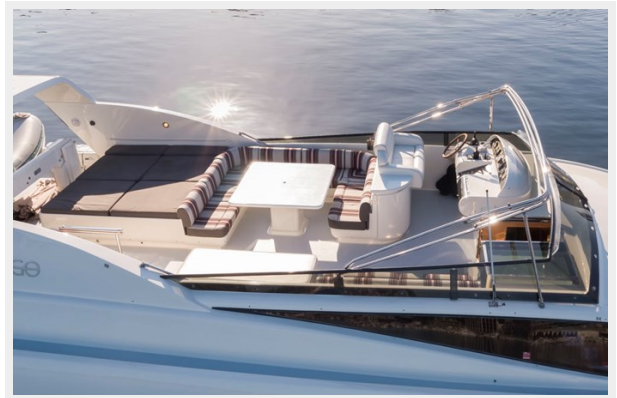
WW Air 17L



WW Air 03L



WW Air 04L



WW Air 05L



WW Air 06



WW 01L



WW 02L



WW 04L



WW 06L



WW 08L



WW 09L



WW 10L



WW 11L



WW 12L



WW 13L



WW 18L



WW 20L



WW 16L



WW 17L



WW 22L



WW 23L



WW 26L



WW 40L



WW 41L



WW 32L



WW 33L



WW 36L



WW 28L



WW 29L



WW 30L



WW 34L



WW 34L_1



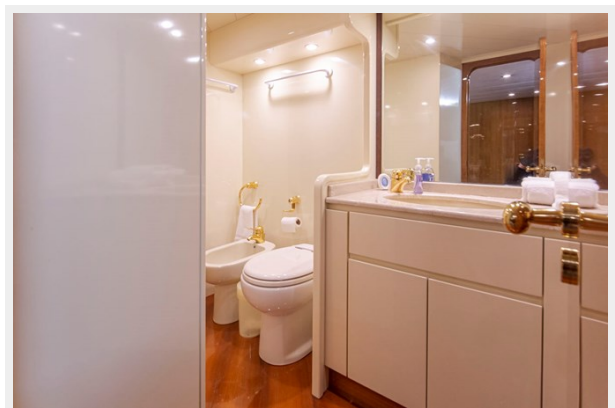
WW 35L



WW 39L



WW 42L



WW 43L



WW 44L



WW 45L



WW 46L



WW 47L



WW 48L



CONTACTS

Andrey Shestakov, leading yacht broker of the sales department of Shestakov Yacht Sales Inc. Shestakov Yacht Sales Inc., the official representative of the Miami/Fort Lauderdale FL headquarters.

Contact details

Email: andrey@shestakovyachtsales.com

Web: shestakovyachtsales.com/en/

Telephones

USA: +1(954)274-4435

Office hours

Monday – Saturday: **9:00 - 21:00** EDT

Sunday: **closed**

Address



Harbour Towne Marina, 850 NE 3rd St,
STE 213, Dania, FL 33004