

## BON VOYAGE — TA CHIAO



**Builder:** TA CHIAO

**Year Built:** 1977

**Model:** Cruising Ketch

**Price:** PRICE ON APPLICATION

**Location:** United States

**LOA:** 41' (12.5mm)

**Beam:** 12.16

**Max Draft:** 6' (1.83mm)

Our experienced yacht broker, Andrey Shestakov, will help you choose and buy a yacht that best suits your needs **BON VOYAGE — TA CHIAO** from our catalogue. Presently, at Shestakov Yacht Sales Inc., we have a wide variety of yachts available on our sale's list. We also work in close contact with all the big yacht manufacturers from all over the world.

If you would like to buy a yacht **BON VOYAGE — TA CHIAO** or would like help answering any questions concerning purchasing, selling or chartering a yacht, please call **+1(954)274-4435**

# TABLE OF CONTENTS

TABLE OF CONTENTS	2
SPECIFICATIONS	5
Overview	5
Basic Information	5
Dimensions	6
Speed, Capacities and Weight	6
Accommodations	6
Hull and Deck Information	6
Engine Information	6
PHOTOS	7
7318982_20191230140937413_1_XLARGE	7
7318982_20191230140945286_1_XLARGE	7
7318982_20191230140957858_1_XLARGE	7
7318982_20191230141002425_1_XLARGE	7
7318982_20191230141017380_1_XLARGE	7
7318982_20191230141022009_1_XLARGE	7
7318982_20191230141029965_1_XLARGE	8
7318982_20191230141023608_1_XLARGE	8
7318982_20191230141039575_1_XLARGE	8
7318982_20191230141047868_1_XLARGE	8
7318982_20191230141052319_1_XLARGE	8
7318982_20191230141057886_1_XLARGE	8
7318982_20191230141102225_1_XLARGE	9
7318982_20191230141103582_1_XLARGE	9
7318982_20191230141110897_1_XLARGE	9
7318982_20191230141127141_1_XLARGE	9
7318982_20191230141139909_1_XLARGE	9
7318982_20191230141144647_1_XLARGE	9

---

7318982_20191230141430105_1_XLARGE	10
7318982_20191230141355512_1_XLARGE	10
7318982_20191230141410776_1_XLARGE	10
7318982_20191230141422862_1_XLARGE	10
7318982_20191230141418791_1_XLARGE	10
7318982_20191230141403981_1_XLARGE	10
7318982_20191230141208518_1_XLARGE	11
7318982_20191230141215227_1_XLARGE	11
7318982_20191230141218703_1_XLARGE	11
7318982_20191230141229535_1_XLARGE	11
7318982_20191230141239895_1_XLARGE	11
7318982_20191230141244769_1_XLARGE	11
7318982_20191230141245972_1_XLARGE	12
7318982_20191230141247092_1_XLARGE	12
7318982_20191230141248232_1_XLARGE	12
7318982_20191230141249441_1_XLARGE	12
7318982_20191230141257525_1_XLARGE	12
7318982_20191230141253889_1_XLARGE	12
7318982_20191230141300963_1_XLARGE	13
7318982_20191230141311022_1_XLARGE	13
7318982_20191230141315546_1_XLARGE	13
7318982_20191230141316630_1_XLARGE	13
7318982_20191230141317637_1_XLARGE	13
7318982_20191230141323628_1_XLARGE	13
7318982_20191230141332385_1_XLARGE	14
7318982_20191230141336671_1_XLARGE	14
7318982_20191230141337969_1_XLARGE	14
7318982_20191230141347738_1_XLARGE	14
7318982_20191230141424091_1_XLARGE	14

---

---

7318982_20191230141450972_1_XLARGE	14
7318982_20191230141434799_1_XLARGE	15
7318982_20191230141441613_1_XLARGE	15
CONTACTS	16
Contact details	16
Telephones	16
Office hours	16
Address	16

---

# SPECIFICATIONS

---

## Overview

---

**THE FIRST LOOK & YOU WANT TO CAST OFF!**

***MOTIVATED SELLER!***

This Beauty, "BON VOYAGE" was Designed by William Gardner, & Built in Taiwan - By Ta Chiao Yacht Builders - Founded in 1911 & Considered a Quality Leader of Asian Ship Building.

- Updated in 2018 & Meticulously Maintained by Her Master Experienced Sailor & Ready to Cast Off Today!
- Classic Old World Elegance with Teak Through-Out
- Sleeps Six Adults Comfortably!
- Portable Air Conditioning -12,500 BTU!
- Fischer Panda 5K Gen!
- Beautiful Bright Teak Through-Out the Interior!
- DINGY INCLUDED WITH 15HP OUTBOARD
- The Following all NEW IN 2018 -
- ALL NEW RIGGING
- NEW BOW PULPIT
- NEW LED TRI-LIGHTS
- NEW LED TRANSOM LIGHTS
- UPDATED ALUMINUM MASTS
- UPDATED HARKEN WINCHES
- NEW SAIL COVERS
- NEW COCKPIT SEAT CUSHIONS
- NEW BUTTERFLY HATCH COVER
- NEW LAZY JACK SYSTEM
- NEW CANVAS DODGER COVER
- NEW REFRIGERATOR
- NEW WATER HEATER

## Basic Information

---

**Category:** Cruising Ketch

**Model Year:** 1977

**Year Built:** 1977

**Country:** United States

---

## Dimensions

---

**LOA:** 41' (12.5mm)

**Beam:** 12.16

**Max Draft:** 6' (1.83mm)

---

## Speed, Capacities and Weight

---

**Water Capacity:** 55 Gallons

**Fuel Capacity:** 150 Gal Gallons

---

## Accommodations

---

**Total Cabins:** 2

---

## Hull and Deck Information

---

**Hull Material:** Fiberglass

---

## Engine Information

---

**Engines:** 1

**Manufacturer:** Isuzu

**Engine Type:** Inboard

**Fuel Type:** Diesel



# PHOTOS

7318982\_20191230140937413\_1\_XLARGE



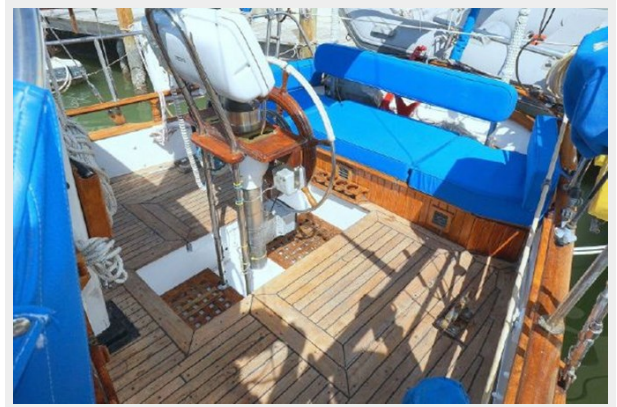
7318982\_20191230140945286\_1\_XLARGE



7318982\_20191230140957858\_1\_XLARGE



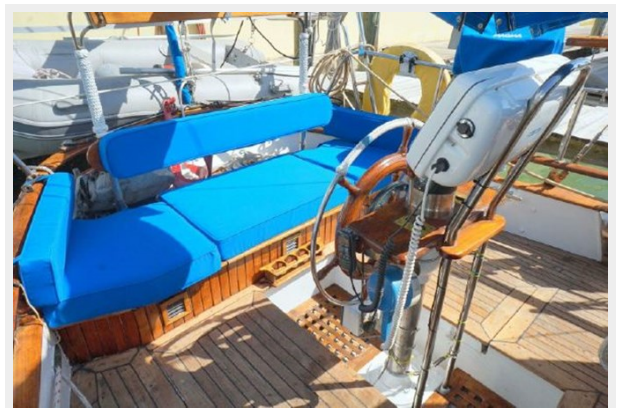
7318982\_20191230141002425\_1\_XLARGE



7318982\_20191230141017380\_1\_XLARGE



7318982\_20191230141022009\_1\_XLARGE





7318982\_20191230141023608\_1\_XLARGE



7318982\_20191230141029965\_1\_XLARGE



7318982\_20191230141039575\_1\_XLARGE



7318982\_20191230141047868\_1\_XLARGE



7318982\_20191230141052319\_1\_XLARGE



7318982\_20191230141057886\_1\_XLARGE





7318982\_20191230141102225\_1\_XLARGE



7318982\_20191230141103582\_1\_XLARGE



7318982\_20191230141110897\_1\_XLARGE



7318982\_20191230141127141\_1\_XLARGE



7318982\_20191230141139909\_1\_XLARGE

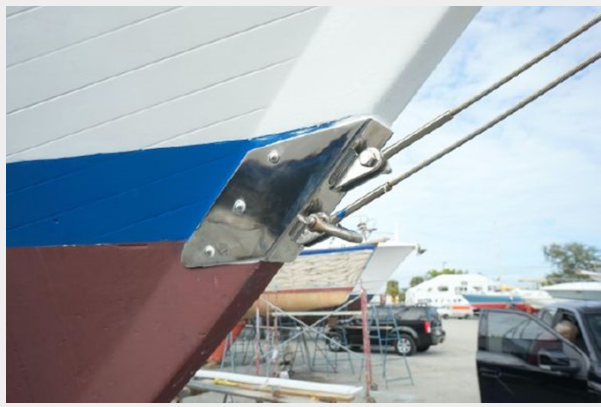


7318982\_20191230141144647\_1\_XLARGE





7318982\_20191230141430105\_1\_XLARGE



7318982\_20191230141355512\_1\_XLARGE



7318982\_20191230141410776\_1\_XLARGE



7318982\_20191230141422862\_1\_XLARGE



7318982\_20191230141418791\_1\_XLARGE



7318982\_20191230141403981\_1\_XLARGE



7318982\_20191230141208518\_1\_XLARGE



7318982\_20191230141215227\_1\_XLARGE



7318982\_20191230141218703\_1\_XLARGE



7318982\_20191230141229535\_1\_XLARGE



7318982\_20191230141239895\_1\_XLARGE



7318982\_20191230141244769\_1\_XLARGE





7318982\_20191230141245972\_1\_XLARGE



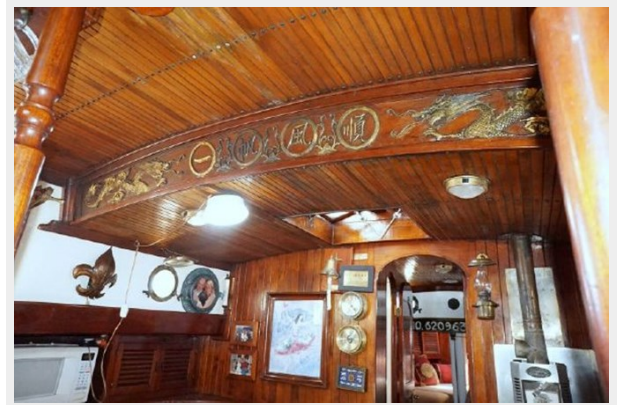
7318982\_20191230141247092\_1\_XLARGE



7318982\_20191230141248232\_1\_XLARGE



7318982\_20191230141249441\_1\_XLARGE



7318982\_20191230141253889\_1\_XLARGE



7318982\_20191230141257525\_1\_XLARGE





7318982\_20191230141300963\_1\_XLARGE



7318982\_20191230141311022\_1\_XLARGE



7318982\_20191230141315546\_1\_XLARGE



7318982\_20191230141316630\_1\_XLARGE



7318982\_20191230141317637\_1\_XLARGE



7318982\_20191230141323628\_1\_XLARGE





7318982\_20191230141332385\_1\_XLARGE



7318982\_20191230141336671\_1\_XLARGE



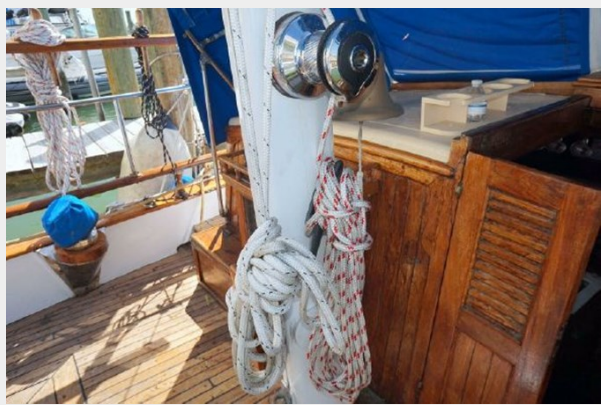
7318982\_20191230141337969\_1\_XLARGE



7318982\_20191230141347738\_1\_XLARGE



7318982\_20191230141424091\_1\_XLARGE



7318982\_20191230141450972\_1\_XLARGE



7318982\_20191230141434799\_1\_XLARGE



7318982\_20191230141441613\_1\_XLARGE



---

# CONTACTS

---

Andrey Shestakov, leading yacht broker of the sales department of Shestakov Yacht Sales Inc. Shestakov Yacht Sales Inc., the official representative of the Miami/Fort Lauderdale FL headquarters.

---

## Contact details

---

Email: [andrey@shestakovyachtsales.com](mailto:andrey@shestakovyachtsales.com)

Web: [shestakovyachtsales.com/en/](http://shestakovyachtsales.com/en/)

---

## Telephones

---

USA: +1(954)274-4435

---

## Office hours

---

Monday – Saturday: **9:00 - 21:00** EDT

Sunday: **closed**

---

## Address

---



Harbour Towne Marina, 850 NE 3rd St,  
STE 213, Dania, FL 33004