

KNOT RACING — VIKING



Builder: VIKING

Year Built: 2007

Model: Motor Yacht

Price: \$1,990,000 USD

Location: United States

LOA: 74' (22.56mm)

Beam: 19.66

Max Draft: 6' (1.83mm)

Our experienced yacht broker, Andrey Shestakov, will help you choose and buy a yacht that best suits your needs **Knot Racing — VIKING** from our catalogue. Presently, at Shestakov Yacht Sales Inc., we have a wide variety of yachts available on our sale's list. We also work in close contact with all the big yacht manufacturers from all over the world.

If you would like to buy a yacht **Knot Racing — VIKING** or would like help answering any questions concerning purchasing, selling or chartering a yacht, please call **+1(954)274-4435**

TABLE OF CONTENTS

TABLE OF CONTENTS	2
SPECIFICATIONS	5
Overview	5
Basic Information	5
Dimensions	5
Speed, Capacities and Weight	5
Accommodations	5
Hull and Deck Information	6
Engine Information	6
PHOTOS	7
74-2007-Viking-Enclosed-Bridge-01	7
74-2007-Viking-Enclosed-Bridge-02	7
74-2007-Viking-Enclosed-Bridge-03	7
74-2007-Viking-Enclosed-Bridge-04	7
74-2007-Viking-Enclosed-Bridge-05	7
74-2007-Viking-Enclosed-Bridge-06	7
74-2007-Viking-Enclosed-Bridge-07	8
74-2007-Viking-Enclosed-Bridge-08	8
74-2007-Viking-Enclosed-Bridge-09	8
74-2007-Viking-Enclosed-Bridge-10	8
74-2007-Viking-Enclosed-Bridge-11	8
74-2007-Viking-Enclosed-Bridge-12	8
74-2007-Viking-Enclosed-Bridge-13	9
74-2007-Viking-Enclosed-Bridge-14	9
74-2007-Viking-Enclosed-Bridge-15	9
74-2007-Viking-Enclosed-Bridge-16	9
74-2007-Viking-Enclosed-Bridge-17	9
74-2007-Viking-Enclosed-Bridge-18	9

74-2007-Viking-Enclosed-Bridge-19	10
74-2007-Viking-Enclosed-Bridge-20	10
74-2007-Viking-Enclosed-Bridge-22	10
74-2007-Viking-Enclosed-Bridge-21	10
74-2007-Viking-Enclosed-Bridge-23	10
74-2007-Viking-Enclosed-Bridge-24	10
74-2007-Viking-Enclosed-Bridge-25	11
74-2007-Viking-Enclosed-Bridge-26	11
74-2007-Viking-Enclosed-Bridge-27	11
74-2007-Viking-Enclosed-Bridge-28	11
74-2007-Viking-Enclosed-Bridge-29	11
74-2007-Viking-Enclosed-Bridge-30	11
74-2007-Viking-Enclosed-Bridge-31	12
74-2007-Viking-Enclosed-Bridge-32	12
74-2007-Viking-Enclosed-Bridge-33	12
74-2007-Viking-Enclosed-Bridge-34	12
74-2007-Viking-Enclosed-Bridge-35	12
74-2007-Viking-Enclosed-Bridge-36	12
74-2007-Viking-Enclosed-Bridge-37	13
74-2007-Viking-Enclosed-Bridge-38	13
74-2007-Viking-Enclosed-Bridge-39	13
74-2007-Viking-Enclosed-Bridge-40	13
74-2007-Viking-Enclosed-Bridge-41	13
74-2007-Viking-Enclosed-Bridge-42	13
74-2007-Viking-Enclosed-Bridge-43	14
74-2007-Viking-Enclosed-Bridge-44	14
74-2007-Viking-Enclosed-Bridge-46	14
74-2007-Viking-Enclosed-Bridge-45	14
CONTACTS	15

Contact details	15
Telephones	15
Office hours	15
Address	15

SPECIFICATIONS

Overview

Bring Offers! Turn Key!

This 74' Viking is upgraded, serviced and ready to run!

- MTUs (Upgraded 2400hp M93s) had all recommended services by RPM diesel April 2019
- Both Generators fully serviced September 2019
- Full A/C Service May 2019
- New Electronics May 2019
- New Appliances May 2019
- New Wrap August 2019
- Recent Survey Available
- All service documented

Basic Information

Category: Motor Yacht

Model Year: 2007

Year Built: 2007

Country: United States

Dimensions

LOA: 74' (22.56mm)

Beam: 19.66

Max Draft: 6' (1.83mm)

Speed, Capacities and Weight

Water Capacity: 385 Gallons

Holding Tank: 250 Gal Gallons

Fuel Capacity: 3000 Gal Gallons

Accommodations

Total Cabins: 2

Total Heads: 5

Hull and Deck Information

Hull Material: Fiberglass

Engine Information

Engines: 2

Manufacturer: MTU

Engine Type: Inboard

Fuel Type: Diesel

PHOTOS

74-2007-Viking-Enclosed-Bridge-01



74-2007-Viking-Enclosed-Bridge-02



74-2007-Viking-Enclosed-Bridge-03



74-2007-Viking-Enclosed-Bridge-04



74-2007-Viking-Enclosed-Bridge-05



74-2007-Viking-Enclosed-Bridge-06



74-2007-Viking-Enclosed-Bridge-07



74-2007-Viking-Enclosed-Bridge-08



74-2007-Viking-Enclosed-Bridge-09



74-2007-Viking-Enclosed-Bridge-10



74-2007-Viking-Enclosed-Bridge-11



74-2007-Viking-Enclosed-Bridge-12



74-2007-Viking-Enclosed-Bridge-13



74-2007-Viking-Enclosed-Bridge-14



74-2007-Viking-Enclosed-Bridge-15



74-2007-Viking-Enclosed-Bridge-16



74-2007-Viking-Enclosed-Bridge-17



74-2007-Viking-Enclosed-Bridge-18



74-2007-Viking-Enclosed-Bridge-19



74-2007-Viking-Enclosed-Bridge-20



74-2007-Viking-Enclosed-Bridge-22



74-2007-Viking-Enclosed-Bridge-21



74-2007-Viking-Enclosed-Bridge-23



74-2007-Viking-Enclosed-Bridge-24



74-2007-Viking-Enclosed-Bridge-25



74-2007-Viking-Enclosed-Bridge-26



74-2007-Viking-Enclosed-Bridge-27



74-2007-Viking-Enclosed-Bridge-28



74-2007-Viking-Enclosed-Bridge-29



74-2007-Viking-Enclosed-Bridge-30



74-2007-Viking-Enclosed-Bridge-31



74-2007-Viking-Enclosed-Bridge-32



74-2007-Viking-Enclosed-Bridge-33



74-2007-Viking-Enclosed-Bridge-34



74-2007-Viking-Enclosed-Bridge-35



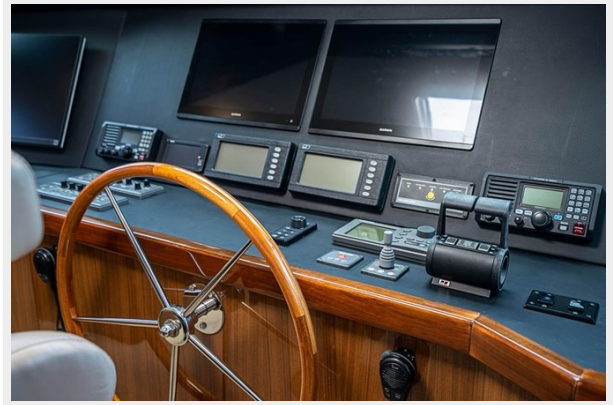
74-2007-Viking-Enclosed-Bridge-36



74-2007-Viking-Enclosed-Bridge-37



74-2007-Viking-Enclosed-Bridge-38



74-2007-Viking-Enclosed-Bridge-39



74-2007-Viking-Enclosed-Bridge-40



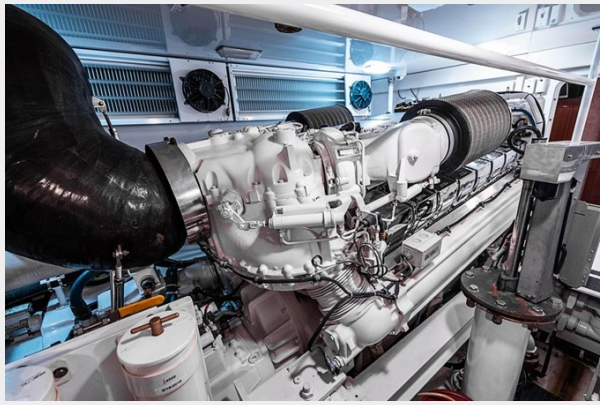
74-2007-Viking-Enclosed-Bridge-41



74-2007-Viking-Enclosed-Bridge-42



74-2007-Viking-Enclosed-Bridge-43



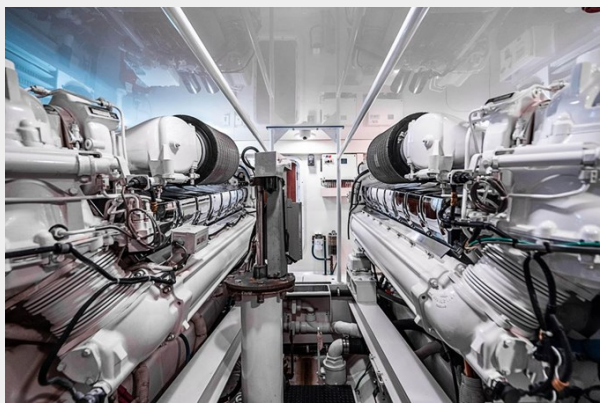
74-2007-Viking-Enclosed-Bridge-44



74-2007-Viking-Enclosed-Bridge-46



74-2007-Viking-Enclosed-Bridge-45



CONTACTS

Andrey Shestakov, leading yacht broker of the sales department of Shestakov Yacht Sales Inc. Shestakov Yacht Sales Inc., the official representative of the Miami/Fort Lauderdale FL headquarters.

Contact details

Email: andrey@shestakovyachtsales.com

Web: shestakovyachtsales.com/en/

Telephones

USA: +1(954)274-4435

Office hours

Monday – Saturday: **9:00 - 21:00** EDT

Sunday: **closed**

Address



Harbour Towne Marina, 850 NE 3rd St,
STE 213, Dania, FL 33004