

DECLASSIFIED — DOVER



Builder: DOVER

Year Built: 2001

Model: Pilothouse

Price: PRICE ON APPLICATION

Location: United States

LOA: 90' (27.43m)

Beam: 21.33

Min Draft: 6' (1.83m)

Max Draft: 6' 6" (1.98m)

Cruise Speed: 12 Knots Kts. (14 MPH)

Max Speed: 19 Knots Kts. (22 MPH)

Our experienced yacht broker, Andrey Shestakov, will help you choose and buy a yacht that best suits your needs **DECLASSIFIED — DOVER** from our catalogue. Presently, at Shestakov Yacht Sales Inc., we have a wide variety of yachts available on our sale's list. We also work in close contact with all the big yacht manufacturers from all over the world.

If you would like to buy a yacht **DECLASSIFIED — DOVER** or would like help answering any questions concerning purchasing, selling or chartering a yacht, please call **+1(954)274-4435**

TABLE OF CONTENTS

TABLE OF CONTENTS	2
SPECIFICATIONS	6
Overview	6
Basic Information	6
Dimensions	6
Speed, Capacities and Weight	7
Accommodations	7
Hull and Deck Information	7
Engine Information	7
PHOTOS	8
Declassified Main 100	8
Declassified - Main 102	8
Underwater Lights	8
Lighting	8
DeClassified Haulout 1	9
DeClassified Haulout Sideview	9
Splash after New Bottom Job	9
DeClassified Salon Wet Bar	9
Declassified - Bar 1	10
DeClassified Salon-Remote TV Cabinet	10
Declassified - Bar 2	10
DeClassified Salon	10
IMG_0797	11
IMG_0798	11
IMG_0802	11
DeClassified Dining to Salon	11
DeClassified Dining 2	12
DeClassified Dining 1	12

DeClassified Dining 3	12
IMG_0804	12
IMG_0787	13
IMG_0786	13
DeClassified Dinette 1	13
DeClassified Dinette 2	13
IMG_1367	14
Master SR Main	14
Master SR Closets	14
Master SR Seating	14
Declassified - Hers	15
Master SR TV	15
Declassified - Hers Tub	15
Declassified - Hers 1	15
IMG_1376	16
IMG_1371	16
IMG_1374	16
IMG_1387	16
IMG_1386	17
IMG_1383	17
IMG_1259	17
IMG_1400	17
IMG_1402	18
IMG_1401	18
IMG_1258	18
IMG_1398	18
IMG_1260	19
IMG_1253	19
IMG_1399	19

IMG_1247	19
Declassified Stairway to Pilothouse	20
Declassified Stairway to Pilothouse	20
DeClassified Pilot House	20
DeClassified Pilot House	20
Declassified Pilothouse	21
Declassified Pilothouse	21
DeClassified CQ Captains	21
DeClassified CQ Crews Quarters	21
DeClassified CQ Head 4	22
DeClassified CQ Head 3	22
DeClassified CQ Head 5	22
DeClassified CQ Head 1	22
DeClassified CQ Head 2	23
DeClassified Flybridge Helm	23
DeClassified Flybridge Lounge Area	23
DeClassified Flybridge	23
DeClassified Flybridge Napoleon Grill	24
DeClassified Flybridge BarStools	24
DeClassified Flybridge Napoleon Grill Area	24
DeClassified Flybridge	24
DeClassified Flybridge Beverage Center	25
DeClassified Flybridge Frigibar 1	25
DeClassified Flybridge ManOverboard	25
DeClassified Flybridge New Epirb	25
Anchor	26
DeClassified Aft Deck	26
DeClassified Aft Deck	26
DeClassified Aft Deck	26

DeClassified Aft Deck	26
IMG_0799	26
CONTACTS	27
Contact details	27
Telephones	27
Office hours	27
Address	27

SPECIFICATIONS

Overview

This luxury motor yacht underwent an extensive 1.5 million dollar refit in 2011 including major overhauls of main engines.

- Twin 2001 MTU's Diesels 12v2000 Series Engines 1480 HP• 2 - 2007 New Northern Lights 32kw Generators• Naiad Stabilizers 7.5sf• Bow Thrusters - Hydraulic 40 HP• Trace 2500 Watt Inverter• 100 Amp Shore Power Cable - Glendenning CABLEMASTER• Full Fiberglass Hardtop on Flybridge• 2019 Dining Chairs (8)• 2019 Italian Barstools (2) in Salon• 2018 New Bottom Paint• 2018 New Teak on Swim Platform• 2018 Engines Serviced & Fluids Changed• 2018 Generators Serviced & Fluids Changed• 2018 New Epirb• 2018 New Fusion Stereo w/Blue-tooth MS-AV 750• 2018 New Frigidaire Beverage Refrigeration Refrigerator• 2018 Dinette Seating Updated• 2018 New Flybridge Bar Stools Updated• 2018 New Flybridge Cabins Chair Updated• 2018 Sun Pad & Cover Updated• 2018 New Updated Captains Cabin• 2018 New Updated Crew Quarters• 2017 New Underwater Lights• 2017 Flybridge Stainless Napoleon Propane Grill• 2015 New Anchor Windlass• 2015 New Cutlass Bearings• 2015 Engine Alignment• 2015 Air Conditioning Serviced• 2015 New Fresh Water Pump Pressure Accumulators• 2015 New Electrical Transformers• 2015 Power Panel Serviced• 2015 New Rebuilt Holding Tank & Pump• 2015 New Galley Wine Refrigerator• 2015 New Galley Ice Maker• 2015 Watermaker Serviced• 2015 New Water Heater• 2015 Engine Room Painted• 2015 New Salon Carpeting• 2011 Full Updated Electronics• 2011 Major overhaul of Main Engines• 2011 New Hardtop on Flybridge• 2011 New Deck Decking• 2007 Northern Lights 32kw Generators

Basic Information

Category: Pilothouse

Sub Category: Pilothouse

Model Year: 2001

Year Built: 2001

Country: United States

Dimensions

LOA: 90' (27.43mm)

Beam: 21.33

Min Draft: 6' (1.83mm)

Max Draft: 6' 6" (1.98mm)

Speed, Capacities and Weight

Cruise Speed: 12 Knots Kts. (14 MPH)

Max Speed: 19 Knots Kts. (22 MPH)

Water Capacity: 1380 Gallons

Holding Tank: 266 Gal Gallons

Fuel Capacity: 4140 Gal Gallons

Accommodations

Total Cabins: 4

Total Berths: 4

Sleeps: 8

Total Heads: 6

Crew Cabin: 3

Crew Berths: 3

Crew Heads: 1

Hull and Deck Information

Hull Material: Aluminum

Engine Information

Engines: 1

Manufacturer: MTU

PHOTOS

Declassified - Main 102



Declassified Main 100



Underwater Lights



Lighting



DeClassified Haulout Sideview



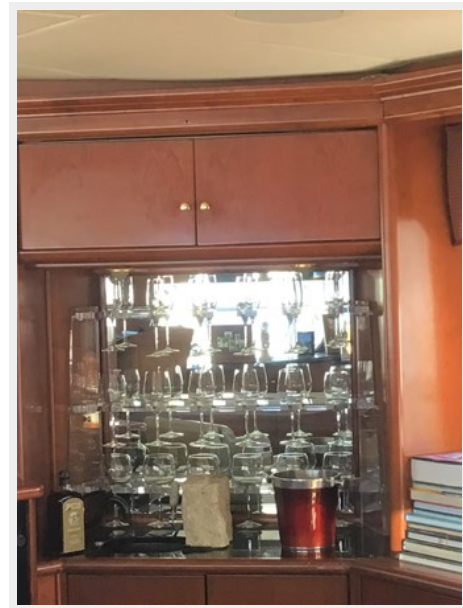
DeClassified Haulout 1



Splash after New Bottom Job



DeClassified Salon Wet Bar



DeClassified Salon-Remote TV Cabinet



Declassified - Bar 1



Declassified - Bar 2



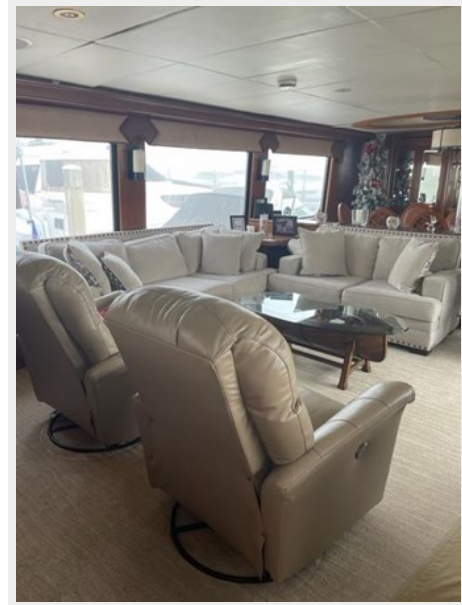
DeClassified Salon



IMG_0797



IMG_0798



IMG_0802



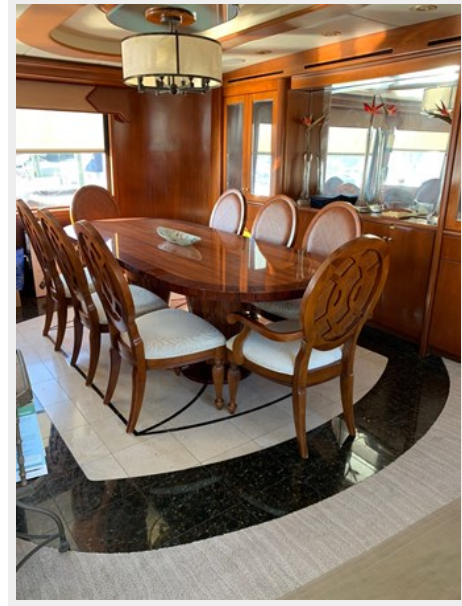
DeClassified Dining to Salon



DeClassified Dining 2



DeClassified Dining 1



DeClassified Dining 3



IMG_0804



IMG_0787



IMG_0786



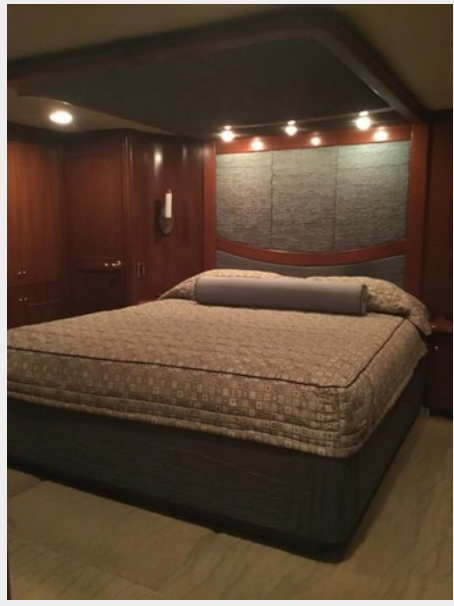
DeClassified Dinette 1



DeClassified Dinette 2



IMG_1367



Master SR Main



Master SR Closets



Master SR Seating



Master SR TV



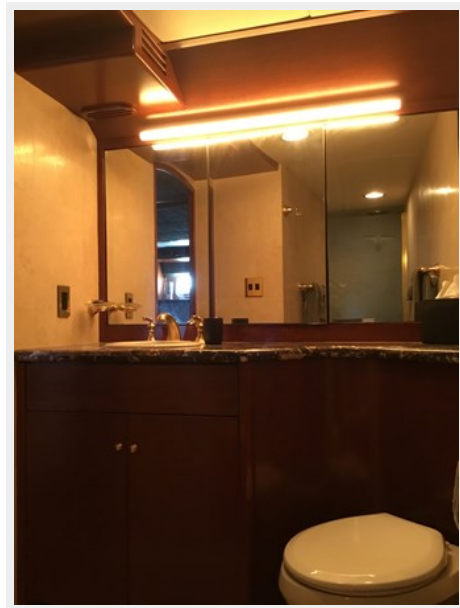
Declassified - Hers



Declassified - Hers Tub



Declassified - Hers 1



IMG_1376



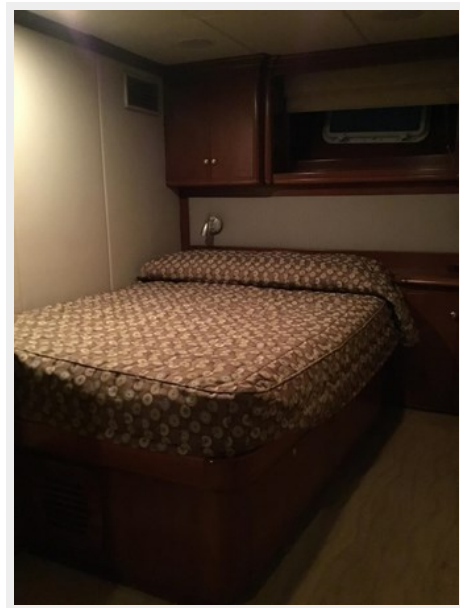
IMG_1371



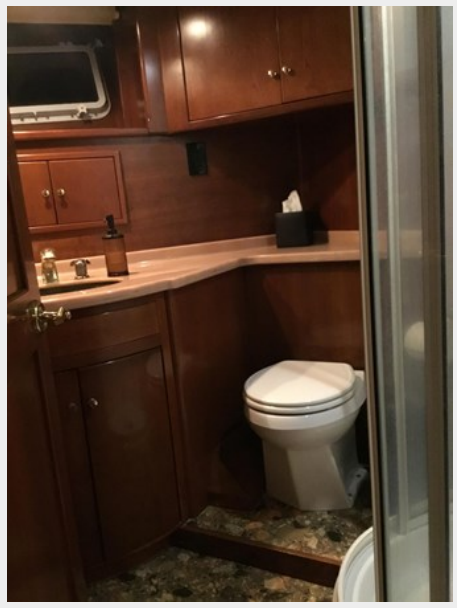
IMG_1374



IMG_1387



IMG_1386



IMG_1383



IMG_1259



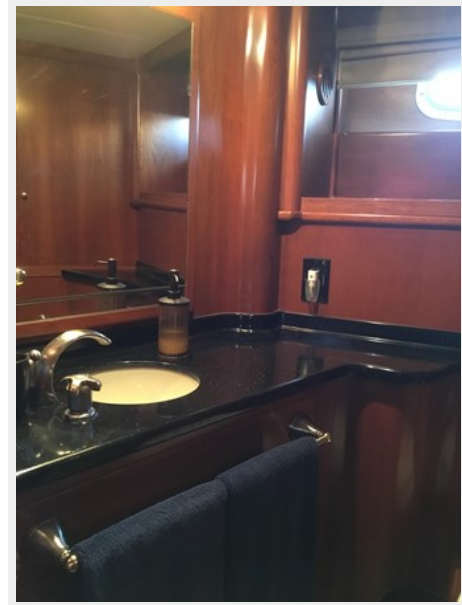
IMG_1400



IMG_1402



IMG_1401



IMG_1258



IMG_1398



IMG_1253



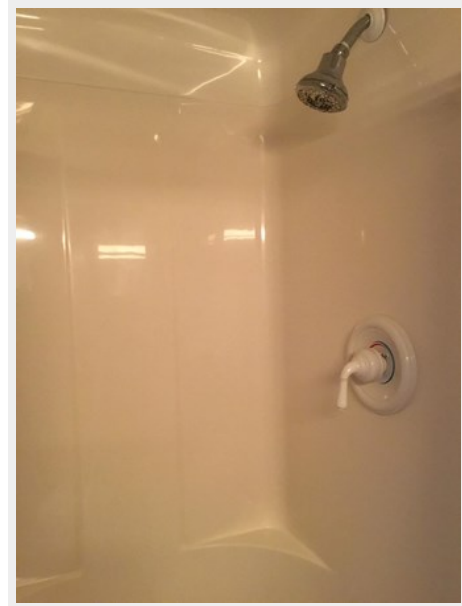
IMG_1260



IMG_1399



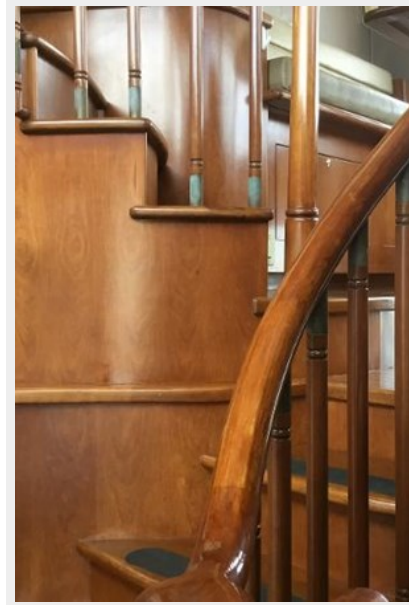
IMG_1247



Declassified Stairway to Pilothouse



Declassified Stairway to Pilothouse



DeClassified Pilot House



DeClassified Pilot House



Declassified Pilothouse



Declassified Pilothouse



DeClassified CQ Captains



DeClassified CQ Crews Quarters



DeClassified CQ Head 4



DeClassified CQ Head 3



DeClassified CQ Head 5



DeClassified CQ Head 1



DeClassified CQ Head 2



DeClassified Flybridge Helm



DeClassified Flybridge



DeClassified Flybridge Lounge Area



DeClassified Flybridge BarStools



DeClassified Flybridge Napoleon Grill



DeClassified Flybridge Napoleon Grill Area



DeClassified Flybridge



DeClassified Flybridge Beverage Center



DeClassified Flybridge Frigibar 1



DeClassified Flybridge ManOverboard



DeClassified Flybridge New Epirb



Anchor



DeClassified Aft Deck



DeClassified Aft Deck



DeClassified Aft Deck



DeClassified Aft Deck



IMG_0799



CONTACTS

Andrey Shestakov, leading yacht broker of the sales department of Shestakov Yacht Sales Inc. Shestakov Yacht Sales Inc., the official representative of the Miami/Fort Lauderdale FL headquarters.

Contact details

Email: andrey@shestakovyachtsales.com

Web: shestakovyachtsales.com/en/

Telephones

USA: +1(954)274-4435

Office hours

Monday – Saturday: **9:00 - 21:00** EDT

Sunday: **closed**

Address



Harbour Towne Marina, 850 NE 3rd St,
STE 213, Dania, FL 33004